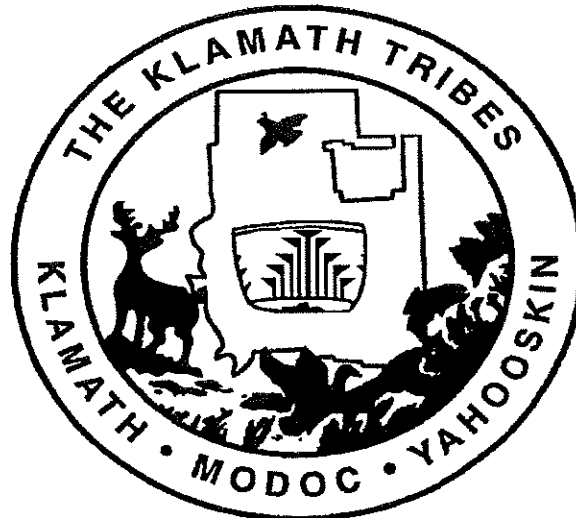


LOCALLY DEVELOPED  
PUBLIC TRANSIT  
HUMAN SERVICE  
COORDINATED  
TRANSPORTATION PLAN

December 2006  
Updated 2009



<u>CHAPTER</u>	<u>TITLE</u>	<u>PAGE</u>
	INTRODUCTION	1
1	STAKEHOLDER INVOLVEMENT	1
2	DATA AND INFORMATION COLLECTION	2
3	IDENTIFYING NEEDS	14
4	ESTABLISHING PRIORITIES	18
	APPROVING RESOLUTION	19
	ATTACHMENT # 1 (mailing list)	22
	ATTACHMENT # 2 (letter and questionnaire)	30
	ATTACHMENT #3 (Klamath Falls City School Information)	35
	ATTACHMENT #4 (BTS Rider Survey)	53
	ATTACHMENT #5 (List of STF available vehicles)	55

## INTRODUCTION

This document is presented in response to the new requirement placed upon Basin Transit Service and The Klamath Tribes in Klamath County by the Public Transit Division (PTD) of the Oregon Department of Transportation (ODOT). This material follows the instructions given by PTD at the workshop of July 21, 2006.

The plan is required to follow four (4) major steps to satisfy the requirements. Those steps are 1.) Stakeholder Involvement; 2.) Data and Information Collection; 3.) Identifying Needs; and 4.) Establishing Priorities. This document has covered each of the four categories and is set out as separate chapters as shown below.

It should be noted that this report is a result of a cooperative effort between Basin Transit Service and the Klamath Tribes and represents their best efforts to develop the plan. This document is not offered as a professional planning document. Rather, this is a good faith product of combined local staff persons only.

## CHAPTER 1

### STAKEHOLDER INVOLVEMENT

Following the suggested list offered by PTD, a mailing list was formulated of all known transportation providers and user organization/groups in Klamath County. (The mailing list is included as Attachment #1.)

Each of the persons/organizations on the mailing list received an invitation to attend a Stakeholder Group meeting that was held on October 20, 2006 from 2:00 PM until 4:00 PM. A questionnaire was mailed out with the invitation and requested to be returned by mail or in person at the Stakeholders meeting. Additionally, questionnaires were made available at the meeting. (Letter of invitation and questionnaire are included as Attachment #2.)

In November 2008, non-respondents from the 2006 survey were sent another copy of the original survey. We received eleven additional responses. Four respondents provide no services. Pelican Point Assisted Living, Klamath County Goodwill, and Klamath County Mental Health provide services specific to their clients. Klamath Community College contracts with Basin Transit Service to offer free transportation for KCC students. Klamath Falls City Schools provided us with detailed information including maps for their services and service area (Data attached as Attachment #3). Overall, coverage of the Klamath Falls Urban Growth Boundary is good. Access to services for clients in outlying areas is limited.

The stakeholder group meeting was held on October 20, 2006. The following persons attended:

Ernest Palmer  
Basin Transit Service

Jana DeGarmo  
The Klamath Tribes

Carol Small  
Basin Transit Service

Curtis Raines  
The Klamath Tribes

Ginette Lewis  
The Klamath Tribes

Les Wilson  
Klamath County Planning

Heidi Thueson  
Klamath County Mental Health

Trina Lee  
Dept of Human Services

Julie Brown  
RVTD Translink

Beverly Leigh  
DHS/Gospel Mission

Anne Hartnett  
West Dialysis

## PUBLIC INVOLVEMENT

In 2006, two public meetings were held to obtain public input to the Plan. Both meetings were poorly attended by general public and STF clientele. In February 2009, a rider sample survey was conducted at the Basin Transit Service downtown transfer station from 10:00 – 11:30 (survey form attached as Attachment #4). This allowed us to sample 5 cycles of drop-off and pick-up. Seventeen riders were willing to fill out our survey; four did not wish to participate. Of survey respondents, fourteen reported the bus is their primary source of transportation; additionally, five riders cite it as their only transportation. The survey showed the primary uses among the respondents are shopping (thirteen), followed by medical appointments (eleven). Using the bus to get to work, school, entertainment, and recreation was listed equally at nine each (riders were allowed to select more than one destination). In response to the question: The bus schedule fits my needs; the greatest response was “most of the time” from ten respondents, with two others writing in, yes. Only one respondent selected “hardly ever”. Two respondents each selected “always” and “sometimes”. Respondents were also asked about additional forms of transportation; again they were allowed to select more than one option. Thirteen reported using the bus, eight “walk”, five “drive myself”, four “ride with friends/family” and “bicycle”, with three reporting they use a “taxi”. Respondents were provided a space for comment. A majority of the comments were related to the service: great job, bus is great, better than driving most of the time. Two respondents requested additional service; a stop closer to the credit union center, and an additional run every hour to Klamath Community College.

## CHAPTER 2

### DATA AND INFORMATION COLLECTION

The first set of information collected was to attempt to develop an inventory of existing transportation services available in Klamath County. Recognizing that this may not be a complete or all-inclusive listing due to the low stakeholder participation, the inventory includes:

#### 1. BASIN TRANSIT SERVICE

Fixed Route – Monday through Friday 6:00 am – 7:00 pm  
Saturday 10:00 am – 5:00 pm

Dial-A-Ride - Monday through Friday 6:00 am – 7:00 pm  
Saturday 10:00 am – 5:00 pm

#### 2. THE KLAMATH TRIBES

Fixed Route - Monday – Chiloquin to Klamath Falls and return trip Chiloquin

Thursday – Chiloquin to Beatty through Klamath Falls to Chiloquin, back to Klamath Falls and Beatty if necessary

Dialysis Route - Monday – Wednesday – Friday  
Currently serving 4-four regular clients  
Also transports on Holidays and days of office closures  
Service open to the community, Tribal members given priority

Dial-A-Ride - Scheduled medical/dental transports going to the following:  
  
Transport Tribal clients from Klamath Falls and Chiloquin to Klamath Tribal Medical and Dental Clinics in Chiloquin  
  
Transport clients from Chiloquin to Klamath Falls for medical and dental appointments  
  
Medical Transports to Medford, Bend and as far North as Portland  
  
Coordinate with Klamath Tribal Health & Family Services, who only transport Federally recognized Tribal members to medical/dental appointments

3. SAGE STAGES – Modoc Transportation Agency Alturas, California

Monday & Friday Transport from Alturas, CA to Redding, CA

Monday – Tuesday – Wednesday – Thursday – Friday Transport from Alturas, CA to Susanville, CA to Reno, NV

Wednesday ONLY Transport from Alturas, CA to Klamath Falls, OR

4. MILLENNIUM TRANSPORT SERVICE INC. - Based out of Coos Bay, OR

Wheelchair and Stretcher Van services, locally and long distance, ambulatory door- through-door service, ground transportation for small or large (up to 8 passengers) groups to any destination within Oregon. Coos Bay, Grants Pass, Medford, Roseburg and Klamath Falls.

5. THE SHUTTLE - Klamath Falls, OR

Daily transport service from Klamath Falls, OR to White City, OR Medford, OR and Ashland, OR. Wheelchair accessible, van availability and delivery service. AMTRAK connection bus service

6. YELLOW CAB - Klamath Falls, OR

Transport daily, wheelchair accessible, van availability and delivery service.

7. KLEOS - Chiloquin, OR

Transport KLEOS clients who are children with emotional and mental disabilities.

8. KLAMATH BASIN SENIOR CITIZENS' COUNCIL – Klamath Falls, OR

Transport program clients who are senior citizens.

9. REACH, Inc. - Klamath Falls, OR

Transport REACH clients who are persons with disabilities.

10. KLAMATH COUNTY MENTAL HEALTH – Klamath Falls, OR

Transport Mental Health clients for medical treatment, therapy and secure medical transports.

11. TRANSLINK Consortium

Provides transportation funds for OHP Plus clients to medical appointments.

12. OREGON DEPARTMENT OF HUMAN SERVICES – Klamath Falls, OR

Providing transportation to clients for medical and employment appointments through bus passes and volunteer drivers.

13. DISABLED AMERICAN VETERANS

Providing transportation to clients for veteran services out of County primarily White City and Roseburg.

14. THE SALVATION ARMY

Providing bus passes to low-income clients for use in the Klamath Falls urban growth boundary area.

15. THE KLAMATH FALLS GOSPEL MISSION – Klamath Falls, OR

Providing bus passes to low-income clients for use in the Klamath Falls urban growth boundary area. They also have van services available to clients for work, medical and educational trips in the Klamath Falls urban growth boundary area.

16. CLASSIC TAXI – Klamath Falls, OR

A private cab company providing traditional taxi services in the Klamath Falls area.

17. KLAMATH FALLS RETIREMENT CENTERS AND ASSISTED LIVING CENTERS

Virtually every such facility in Klamath Falls has their own van or cutaway bus for transporting their residents.

## VEHICLE INVENTORY

A listing of vehicles available from STF providers is attached as Attachment # 5

## DEMOGRAPHICS

### **Demographic Profile**

#### **Study Area Description and Demographic Summary**

Basin Transit Service (BST) provides transit service for Klamath County residents with a goal to provide a safe and direct means of travel. BTS provides service to the areas within the greater urban growth boundary of Klamath Falls.

Based on 2000 U.S. Census information about sixty-five percent of Klamath County's population lives within the Klamath Falls Urban Growth Boundary. However, the City of Klamath Falls is unique in Oregon in sense that over half the residents in the urban area live outside the city limits in unincorporated Klamath Falls. Table 1 shows the population of the urban growth area from Census tract information with 2007 estimates and population projections provided by consultants Johnson Gardner as part of the city of Klamath Falls Economic Opportunities Analysis Study.

**Table 1 Population**

Area	Population			
	2000	2007	2010	2015
Klamath County	63,775	65,815	66,968	68,851
Klamath Falls Urban Growth Boundary	41,344	44,321	44,984	46,249

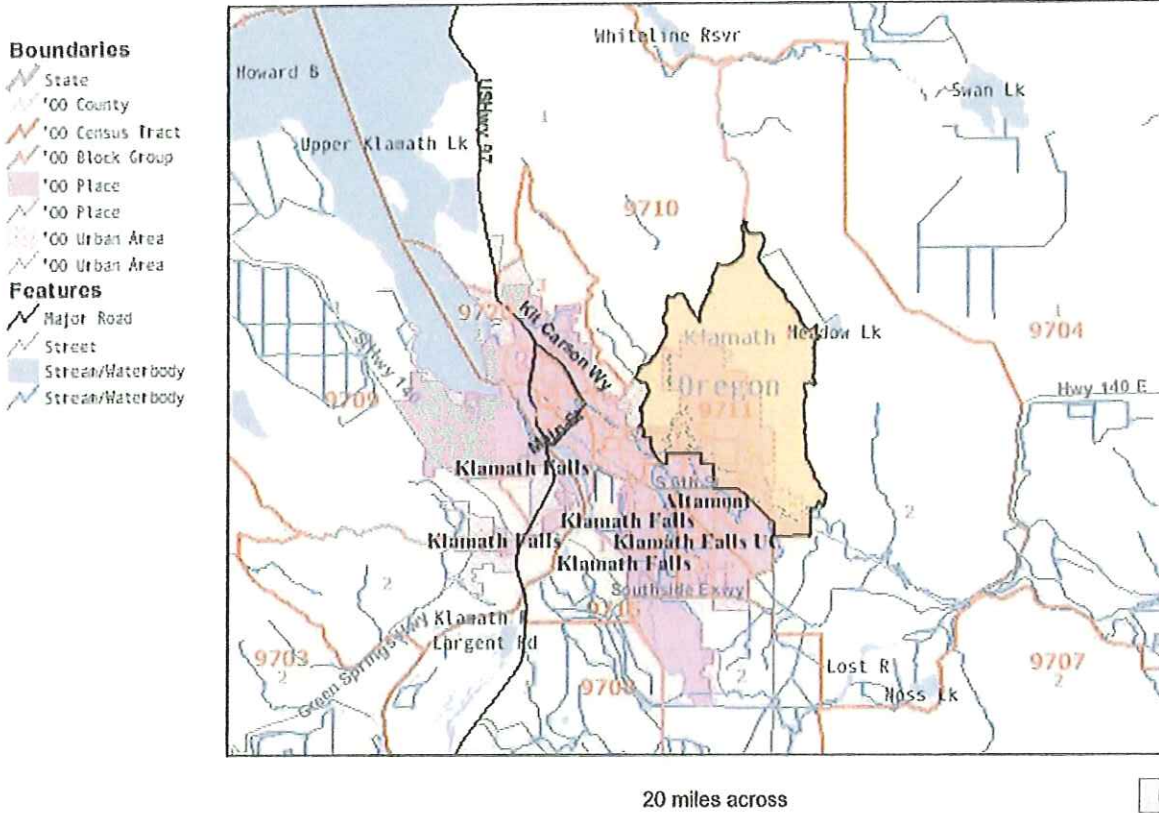
*Source: US Census Bureau, City of Klamath Falls, Population Research Center and JOHNSON GARDENER*

The long term Klamath County forecast estimates growth of 8,944 new residents through 2030 with an average annual growth rate of 0.55%.

The sections below provide statistics about the age, level of disability, veteran population and income levels of residents living within the Basin Transit Service area with summary information from 2000 Census Tracts 2011 through 2020 used to identify information specific to the Klamath Falls Urban Growth boundary. The following demographic factors help to provide an informed picture of the market for public transportation in Klamath County. We have used 2000 Census data to analyze demographic characteristics as this dataset remains the most current source of detailed information for these purposes.

# Map 1 - Demographic Data and Urban Growth Boundary Area

Census Tract 9711, Klamath County, Oregon



## Age

Table 2 shows the age distribution of the population in the Basin Transit Service area (Klamath Falls UGB), reported in the 2000 Census compared to the county as a whole and the State of Oregon. The senior population 60 or over within the BTS area is two percentage points higher than the statewide average (16.6%) but lower than the countywide senior population by percentage.

**Table 2 Age Distribution**

Age Category	Population in Klamath Falls Urban Growth Boundary		Klamath County Total Population	State of Oregon
	Number	Percent	Percent	Percent
<b>Under 20 years</b>	11,265	29.1	28.5	27.6
<b>20 - 59</b>	20,152	52.1	51.9	55.8
<b>60- 64</b>	1,524	3.9	4.7	3.8
<b>65 - 74</b>	2,856	7.4	8.1	6.4
<b>75 Years +</b>	2,916	7.5	6.8	6.4



## Disability Status

Table 3 shows a higher percentage disabled residents in of each of the age groups residing within the BTS area compared to the state. Overall nearly one out of four residents in the Klamath Falls UGB report some form of disability.

**Table 3 Disability Status by Age Category**

Age Category	Population in Klamath Falls Urban Growth Boundary		Klamath County Total Population	State of Oregon
	Number of Disabled residents	Percent disabled in age group	Percent disabled in age group	Percent disabled in age group
5 - 15 years	5667	6.9	7	6.3
16- 64 years	20882	22.3	21.6	17.4
65 and older	4911	45.7	43.3	41.5
<b>Total</b>	31460	23.2	22.4	18.8

Data Set: Census 2000 Summary File 3 (SF 3) - Sample Data

Geographic Area: Census Tracts 9711 -9720, Klamath County, Oregon

## Veterans

Veterans are included in this profile of special needs populations because of the travel distance for medical services, typically to the VA in White City and Portland. While not all veterans require public or assisted transportation, segments of this population have special needs. 17.5 percent of residents in the BTS area civilian veterans, with the highest concentration living in Census tracts 9711 and 9713.

**Table 4 Veteran Population**

Census Tract	Population in Klamath Falls Urban Growth Boundary	
	Civilian Veterans	Percent
9711	699	19.1
9712	341	17.6
9713	746	19.7
9714	671	18.5
9715	573	18.5
9716	355	15.1
9717	364	16.5
9718	336	16.7
9719	440	17.4
9720	446	13.9
<b>Total</b>	<b>4971</b>	<b>17.5</b>

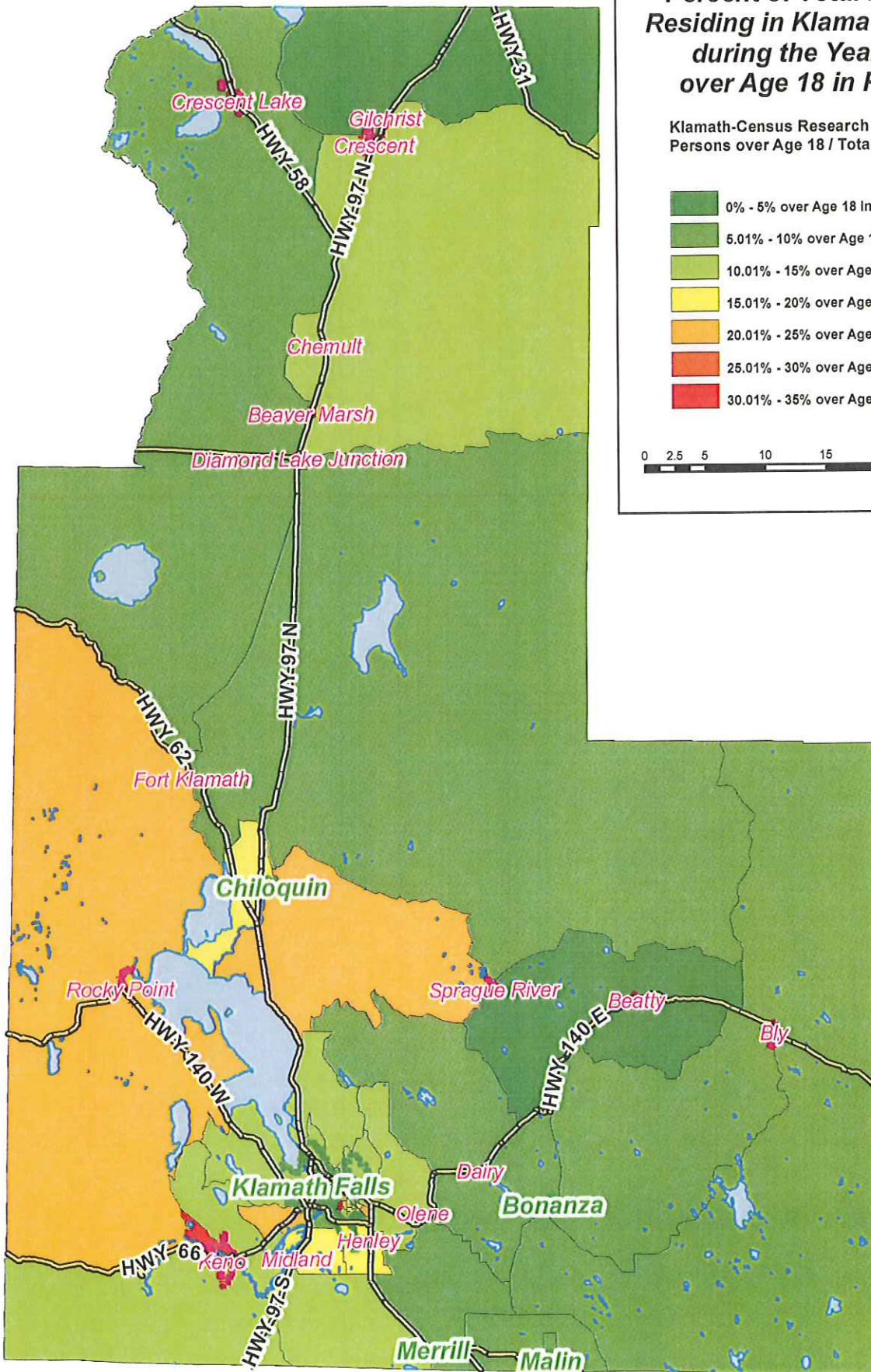
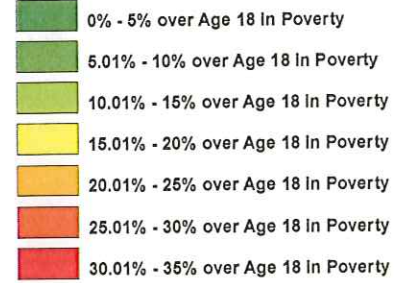
**Table 5 Population in Poverty**

<b>Age Category</b>	<b>Population in Klamath Falls Urban Growth Boundary</b>		<b>Klamath County Total Population</b>	<b>State of Oregon</b>
	<b>Income below Poverty level</b>	<b>Percent of age in poverty</b>	<b>Percent of age in poverty</b>	<b>Percent of age in poverty</b>
<b>Under 5 years</b>			27%	17%
<b>5 - 15 years</b>			21%	13%
<b>16- 64 years</b>			16%	11%
<b>65 years and older</b>			8%	7%
<b>Total</b>			16%	11%

Les Wilson, Senior Planner for Klamath County was consulted on the original Plan in 2006. In 2009 he provided the updated five demographic maps showing Poverty, Age, and Disability by percentage in the geographic area of Klamath County.

## Percent of Total Persons Residing in Klamath County during the Year 2000 over Age 18 in Poverty

Klamath-Census Research  
Persons over Age 18 / Total Population



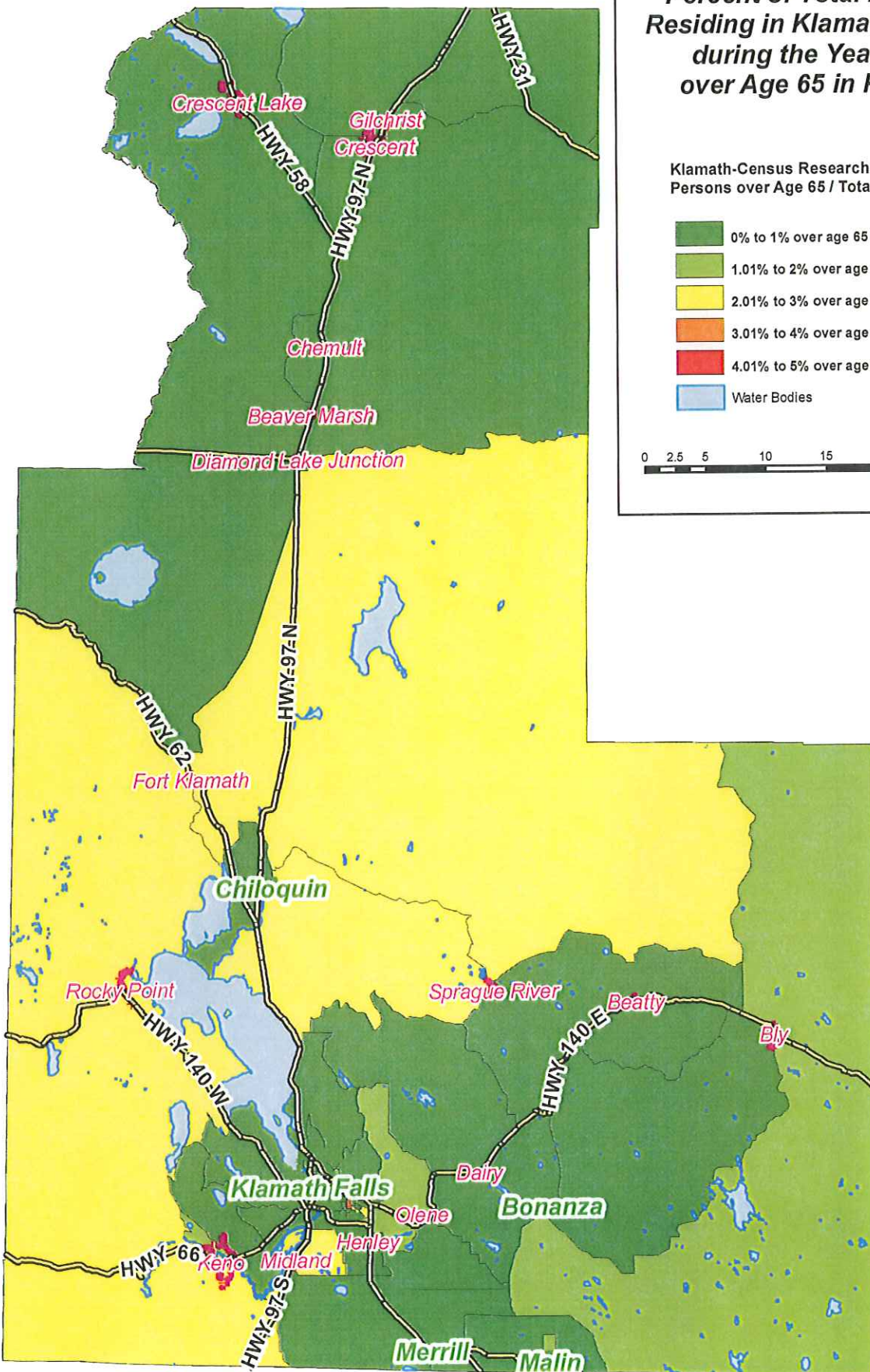
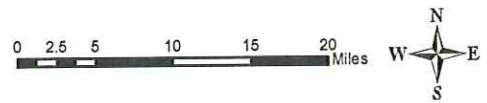
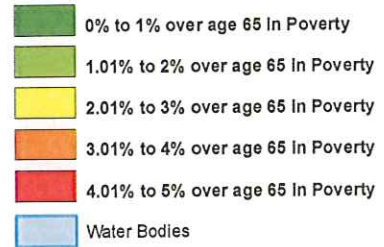
Data source and GIS layer by United States Census Bureau Year 2000.  
Map and data computation provided as a courtesy by Klamath County Planning Department.

Map produced February 2009.



## Percent of Total Persons Residing in Klamath County during the Year 2000 over Age 65 in Poverty

Klamath-Census Research  
Persons over Age 65 / Total Population



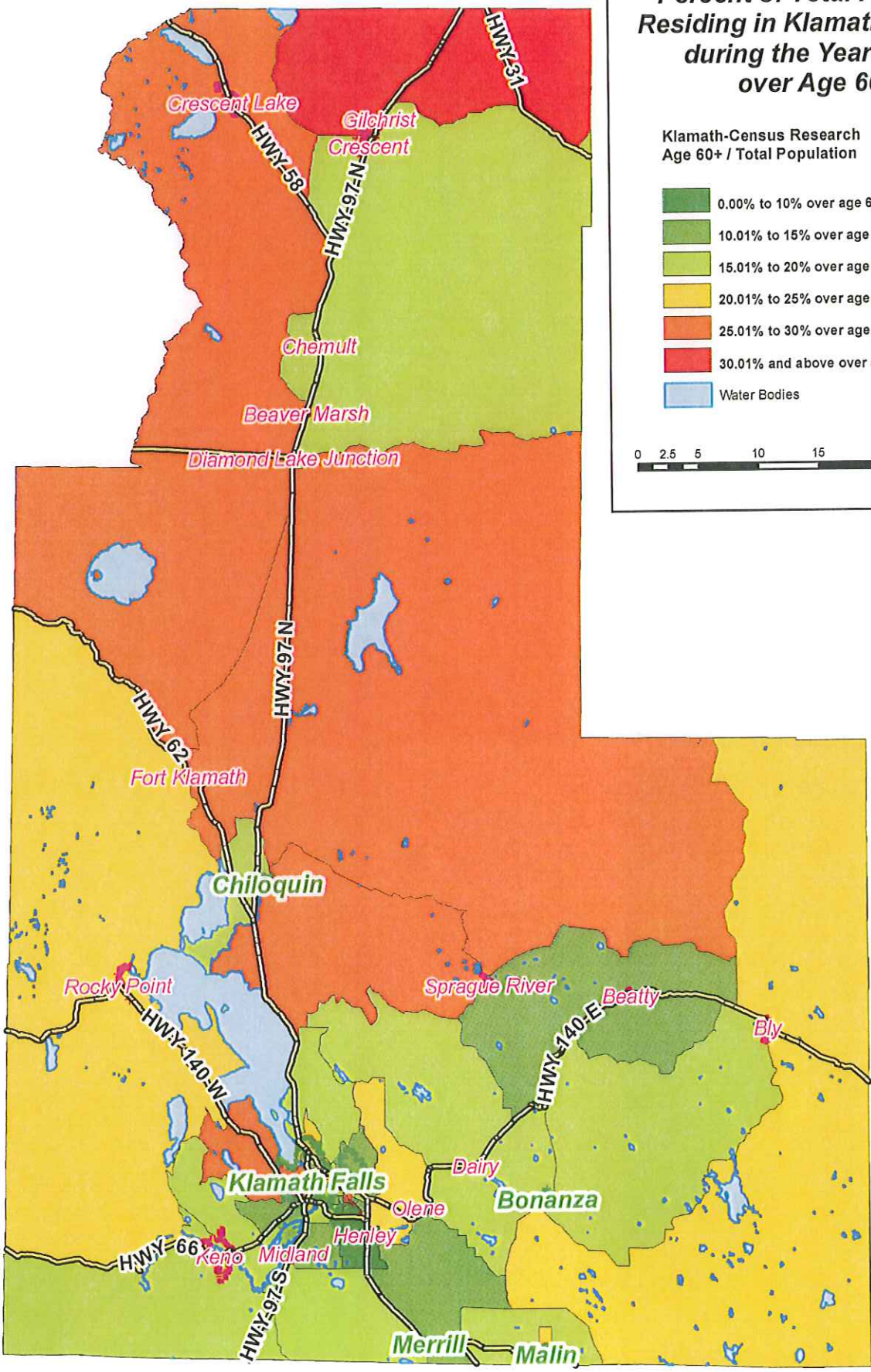
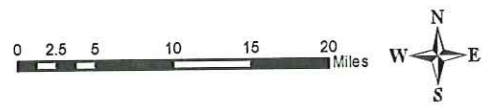
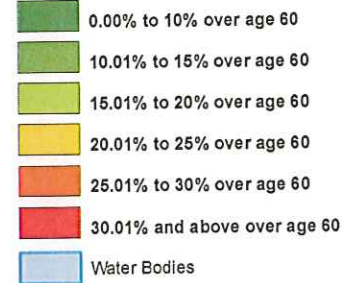
Data source and GIS layer by United States Census Bureau Year 2000.  
Map and data computation provided as a courtesy by Klamath County Planning Department.

Map produced February 2009.



## Percent of Total Persons Residing in Klamath County during the Year 2000 over Age 60

Klamath-Census Research  
Age 60+ / Total Population



Data source and GIS layer by United States Census Bureau Year 2000.  
Map and data computation provided as a courtesy by Klamath County Planning Department.

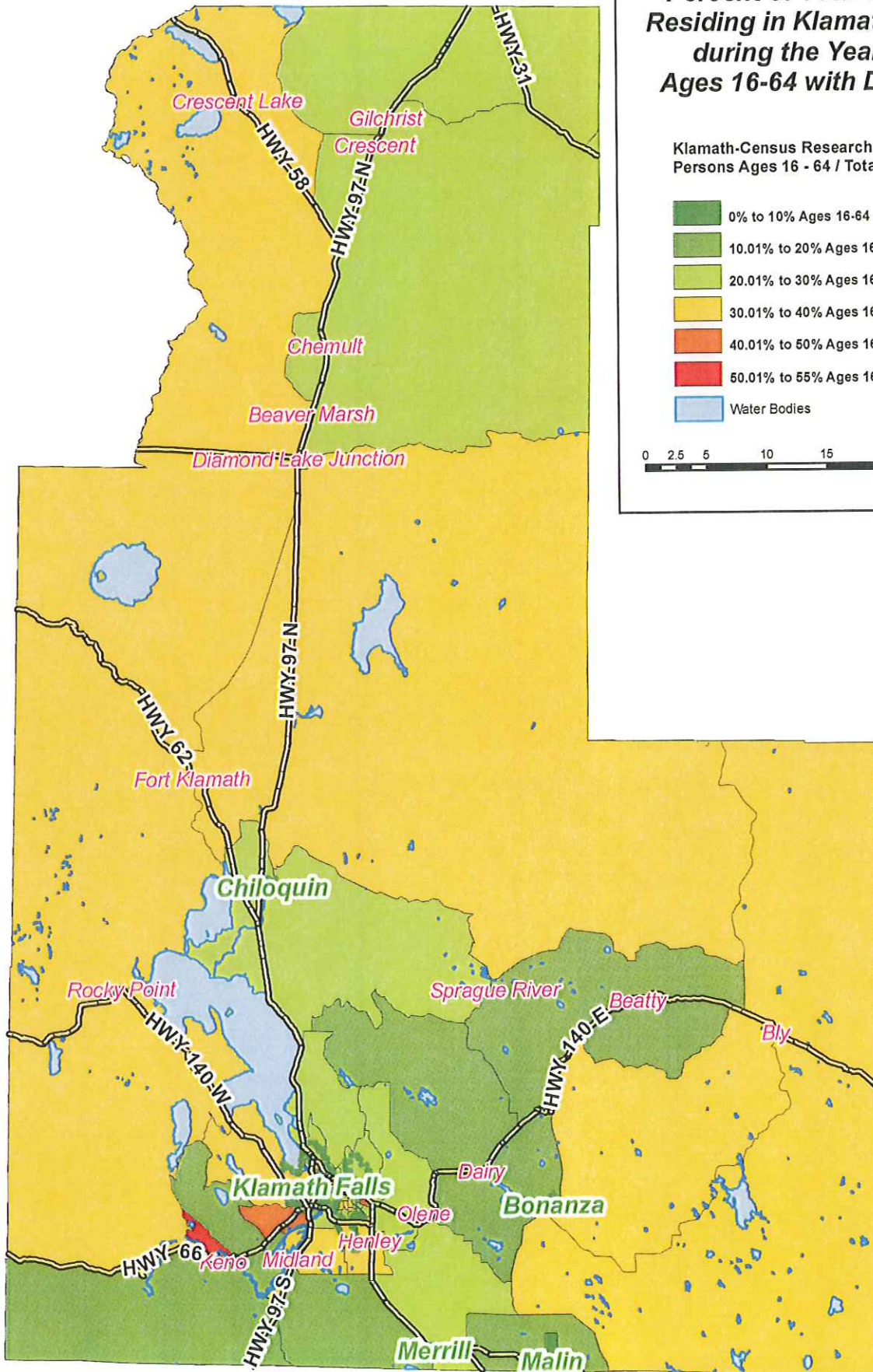
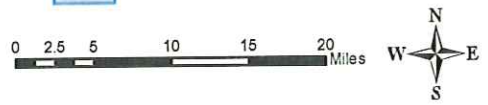
Map produced February 2009.



**Percent of Total Persons Residing in Klamath County during the Year 2000 Ages 16-64 with Disability**

Klamath-Census Research  
Persons Ages 16 - 64 / Total Population

- 0% to 10% Ages 16-64 with Disability
- 10.01% to 20% Ages 16-64 with Disability
- 20.01% to 30% Ages 16-64 with Disability
- 30.01% to 40% Ages 16-64 with Disability
- 40.01% to 50% Ages 16-64 with Disability
- 50.01% to 55% Ages 16-64 with Disability
- Water Bodies



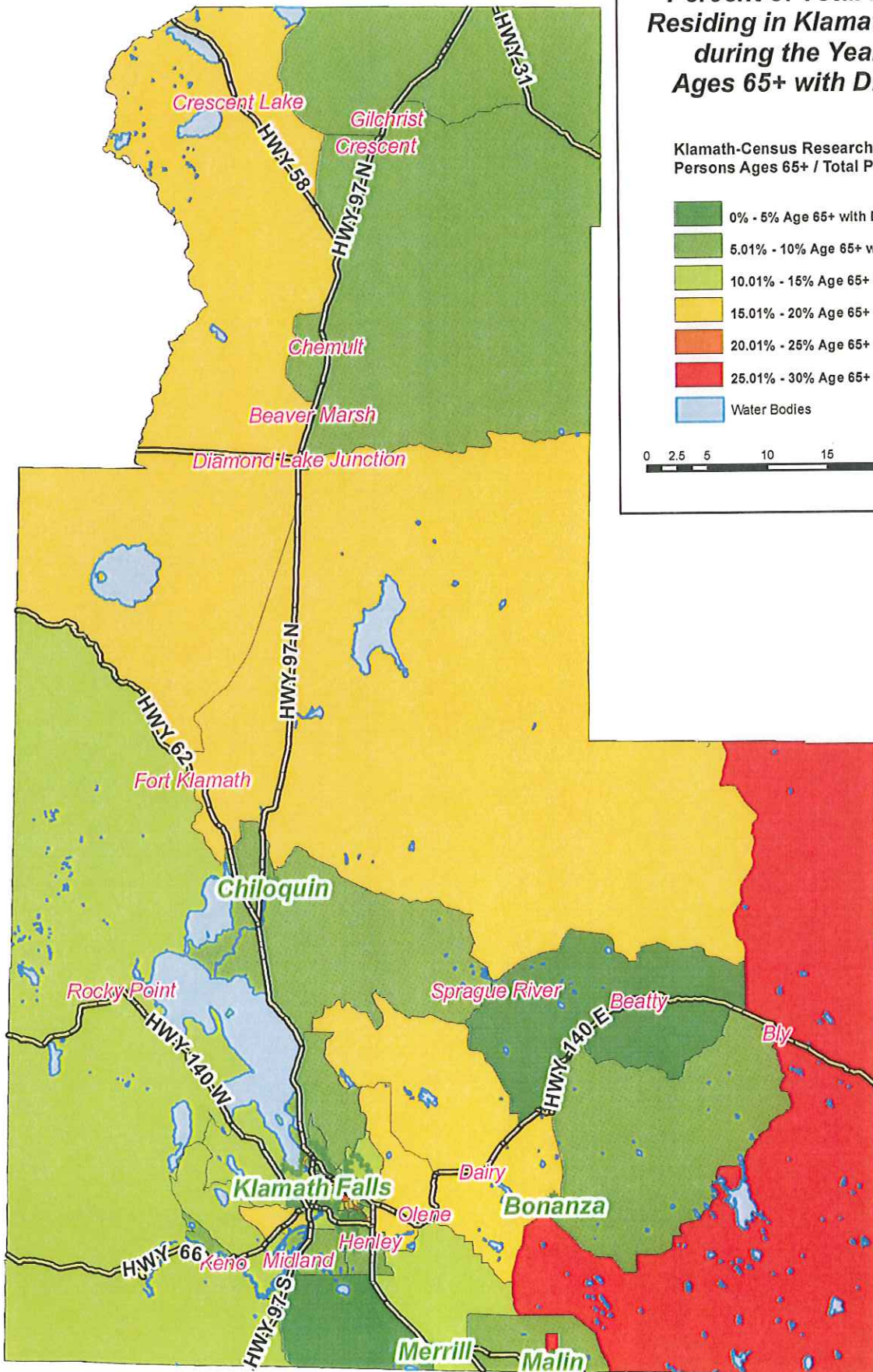
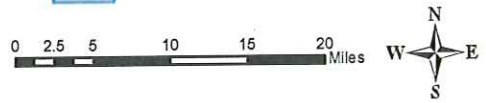
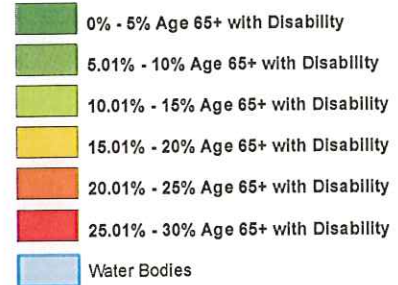
Data source and GIS layer by United States Census Bureau Year 2000.  
Map and data computation provided as a courtesy by Klamath County Planning Department.

Map produced February 2009.



**Percent of Total Persons Residing in Klamath County during the Year 2000 Ages 65+ with Disability**

Klamath-Census Research  
Persons Ages 65+ / Total Population



Data source and GIS layer by United States Census Bureau Year 2000.  
Map and data computation provided as a courtesy by Klamath County Planning Department.

Map produced February 2009.

## CHAPTER 3

### IDENTIFYING NEEDS

The needs assessment comes from the Stakeholders Meeting and from the questionnaires submitted by Stakeholders who were unable to attend. Most of the suggestions for service improvements focused upon Basin Transit Service which is understandable considering that Basin Transit Service is the largest transportation provider and it serves the largest segment of the Klamath County population (45,000 citizens out of 65,000).

Here then in no particular order are the thoughts of the Stakeholders regarding service gaps or needs.

#### Anne Harnett – MWMC West Dialysis

More drivers and more vans for DAR  
Expand hours and days, run on holidays for buses and DAR  
Senior Citizens' van does not accommodate power wheelchairs

#### Beverly Leigh – County Commission on Children & Families/Gospel Mission

Clients unable to get to work outside of regular fixed route, i.e., Aqua Glass, NEW  
Expand hours and days, run on Sundays and holidays  
Transportation to MWMC in evenings  
Make it easier to certify for DAR

#### Heidi Thueson – Klamath County Mental Health

Quicker turnaround time for bus stop on Vandenberg Rd  
Closer bus stop to OASIS on Richmond Rd  
Special van service to transport OASIS clients due to inclement weather.  
Transport clients that no longer come to OASIS, due to the new location and are NOT eligible for DAR  
Transport OASIS clients to special activities.

#### Julie Brown – TRANSLINK

Special transportation for elderly people that are on Medicare, and on fixed income.  
Special transportation outside of district area for elderly and disabled patients to regular appointments, i.e., cancer treatment.

#### Trina Lee – DHS-Seniors & People with Disabilities

People that have income at 100% of Federal poverty level that are not elderly or disabled, not pregnant or receiving any State assistance, outside of medical. They have medical, that does not include medical transportation. Have regular OHP.  
There is a 90-Day enrollment time lapse that occurs before eligibility for program. People need financial assistance for transportation until they are enrolled to fill in any gaps in service.  
Provide special services for people that need more assistance physical assistance than the norm.



Les Wilson – Klamath County Planning

Need Metropolitan Transportation Plan

Assess where bus stops need to be to better serve businesses, Senior Center, etc  
Identify areas where clients live, identify poverty level areas, identify where disabled people live  
Identify numbers of Tribal members in Chiloquin area  
Coordinate dispatch systems  
Survey numbers of riders at each bus stop and their destinations

Ernest Palmer – Basin Transit Service

Developing area above weigh station, area north of OIT. Where will funds come to serve these areas  
Covering outlying areas  
Transportation updated plan (per Trina)  
Needs increase during the winter (per Anne)  
Raising fares (per Anne)

**AGENCIES THAT RETURNED QUESTIONNAIRE**

**2006 Respondents**

Rogue Valley Transportation District Translink Medical Transportation Program  
239 E. Barnett Rd.  
Medford OR 97501

COBC Veterans Affairs  
2819 Dahlia St  
Klamath Falls OR 97601

American Council of the Blind of Oregon – Klamath Chapter  
3500 Summers Lane #27  
Klamath Falls OR 97603

SPOKES Unlimited  
415 Main Street  
Klamath Falls OR 97601

Klamath Health Partnership  
2074 S. 6<sup>th</sup> Street  
Klamath Falls OR 97603-3372

Merle West Medical Center  
2865 Daggett Avenue  
Klamath Falls OR 97601

Klamath County Developmental Disabilities Office  
900 Richmond  
Klamath Falls OR 97601

Chiloquin Community Resource Committee  
30242 Hwy 97 N  
Chiloquin OR 97624

Integral Youth Services  
1011 Main Street  
Klamath Falls OR 97601

Classic Taxi Co  
1308 East Main Street  
Klamath Falls OR 97601

Pe'Peep'Aak Congregate  
PO Box 1275  
Chiloquin OR 97624

Chiloquin Visions In Progress  
Chiloquin Community Center  
PO Box 204  
Chiloquin OR 97624

West Dialysis Center  
2230 Eldorado Blvd  
Klamath Falls OR 97601

**2009 Respondents**  
Pelican Point Assisted Living & Memory Care  
615 Washburn Way  
Klamath Falls OR 97601

Klamath County Mental Health  
3314 Vandenberg Rd  
Klamath Falls OR 97603

Sky Lakes Cancer Treatment Center  
2610 Uhrmann Rd  
Klamath Falls OR 97601

City of Chiloquin  
PO Box 196  
Chiloquin OR 97624

Klamath County Public Health  
403 Pine St.  
Klamath Falls OR 97601

Early Childhood Intervention  
2858 Eberlein  
Klamath Falls OR 97603

Klamath Housing Authority

PO Box 5110  
Klamath Falls OR 97601

Southern Oregon Goodwill Industries  
3401 Washburn Way  
Klamath Falls OR 97603

Klamath Basin Senior Citizens Council  
PO Box JE  
Klamath Falls OR 97602

Klamath Community College  
7390 S. 6<sup>th</sup> St.  
Klamath Falls OR 97603

Klamath Falls City Schools  
1336 Avalon St.  
Klamath Falls OR 97603

**Suggestions for Unmet Needs**

Extended operating hours on Saturdays

Operate on Holidays

Operate on Sundays

Service to more rural areas for transportation to and from work

Time between buses

Transport to and from Chiloquin to Klamath Falls 5-days a week for workers 2-3 days for folks needing to be in town for business, shopping, medical appointments, etc

Extended operating hours for transit buses – too early closing

## CHAPTER 4

### ESTABLISHING PRIORITIES – Basin Transit Service

The transportation priorities identified by this planning effort and endorsed by the Governing Body of Basin Transit Service are as follows.

1. Continued support of all existing services to include operating, planning, marketing, and capital needs. At a minimum those existing providers are listed in Chapter 2 of this document.
2. Expansion of existing services to meet the needs identified by this plan such as more days of operation, expanded operating hours, and more service outside of the current service area.
3. Creation of new service providers to meet the needs identified by this plan.
4. Creation of more coordination to improve efficiencies in existing providers and thereby expand services.

### ESTABLISHING PRIORITIES – The Klamath Tribes

The transportation priorities identified by the planning effort and endorsed by the Klamath Tribes Tribal Council are as follows:

1. Continued support of all existing services to all clients in the service area with priority given to tribal elders and disabled persons and to include operating, planning, marketing, and capital needs.
2. Expansion of existing services, especially with the fixed bus route, to meet the needs of all clients in the service area, such more days, hours, capital, and equipment.
3. Being able to expand and improve existing services to accommodate more clients in the northern rural areas of the Klamath Tribes services area and former reservation boundaries.
4. Creation of improved coordination to reduce inefficiencies with existing providers and expand services.

BEFORE THE BOARD OF DIRECTORS  
OF BASIN TRANSIT SERVICE  
TRANSPORTATION DISTRICT

IN THE MATTER OF APPROVING ) RESOLUTION AND  
ORDER THE LOCALLY DEVELOPED RURAL )  
TRANSPORTATION PLAN ) NO. 2006-11

WHEREAS, this matter came before the Board at it's meeting of December 13, 2006; and

WHEREAS, THE District has been directed by the Oregon Department of Transportation, Public Transit Division, to create a rural plan/inventory of existing services and unmet needs in Klamath County as a condition of receiving future state and federal funds, and

WHEREAS, the guidelines for this plan/inventory are specific to four areas to be addressed which are Stakeholder Involvement, Data Collection, Identifying Needs, and Establishing Priorities; and

NOW AND THEREFORE, the Board of Directors of Basin Transit Service Transportation District of Klamath County, Oregon, RESOLVES AS FOLLOWS:

That the plan/inventory presented to the Board this day meets the required criteria and is hereby adopted as the official document for this purpose by the District.

DATED this 13<sup>th</sup> day of December 2006.

BOARD OF DIRECTORS, BASIN TRANSIT  
SERVICE TRANSPORTATION DISTRICT

\_\_\_\_\_  
TED SWAN, CHAIRPERSON

\_\_\_\_\_  
CAROL SMALL, RECORDING SECRETARY

\_\_\_\_\_  
JAMES UERLINGS, LEGAL COUNSEL

**TRIBAL COUNCIL RESOLUTION #2006-**

**TRIBAL COUNCIL RESOLUTION APPROVING THE LOCALLY DEVELOPED RURAL TRANSPORTATION PLAN FOR THE COMMUNITY SERVICES DEPARTMENT TRANSPORTATION PROGRAM.**

- Whereas,** The Klamath and Modoc Tribes and the Yahooskin Band of Snake Indians signed the Treaty of 1864 establishing the Klamath Reservation; and
- Whereas,** The General Council of the Klamath membership is the governing body of the Tribes, by the authority of the Constitution of the Klamath Tribes (Article VI, & VII, Section IV E) as approved and/or adopted by the General Council amended on November 25, 2000; and
- Whereas,** The Klamath Indian Tribes Restoration Act of August 27, 1986 (P.L. 99-398) restored to federal recognition of the Sovereign Government of the Tribes' Constitution and By-laws; and
- Whereas,** The Klamath Tribes Tribal Council is the elected governmental body of the Tribes and has been delegated the authority to direct the day-to-day business and governmental affairs of the Klamath Tribes under the general guidance of the General Council (Constitution, Article VII, Section I; Tribal Council By-laws, Article I); and
- Whereas,** this matter came before the Klamath Tribal Council at its regular meeting on ; and;
- Whereas,** The Klamath Tribal Council has agreed to the requirement that in order to receive future state and federal funds from the Oregon Department of Transportation, Public Transit Division the Community Services Department shall prepare a rural plan/inventory of existing services and unmet needs in Klamath County; and
- Whereas,** the guidelines for this plan/inventory are specific to four areas to be addressed which are 1) Stakeholder Involvement; 2) Data Collection; 3) Identifying Needs; and 4) Establishing Priorities; and
- Whereas,** The Klamath Tribal Council is aware that this plan/inventory is only for the purposes of supporting the Tribal Transit Program which is operated through the Community Services Department and no other Transportation Plan shall be affected; and

**Now therefore be it resolved,** The Klamath Tribal Council has agreed to the requirement that in order to receive future state and federal funds from the Oregon Department of Transportation, Public Transit Division, the Community Services Department shall prepare a rural plan/inventory of existing services and unmet needs in Klamath County.

**Certification**

We, the undersigned, Tribal Council Chairman and Secretary of the Klamath Tribes, do hereby certify that at a scheduled Tribal Council meeting held on the \_\_\_\_\_ day of \_\_\_\_\_, 2004, the Tribal Council duly adopted this resolution by a vote of \_\_\_\_\_ for, \_\_\_\_\_ opposed, and \_\_\_\_\_ abstentions.

\_\_\_\_\_  
**Allen Foreman**  
**Chairman**  
**The Klamath Tribes**

\_\_\_\_\_  
**Torina Case**  
**Secretary**  
**The Klamath Tribes**

# Attachment 1

List of addresses and contacts sent cover letter and survey. Non-respondents from 2006 were sent the survey again in 2009.



Klamath Basin Senior Citizens Council  
PO Box JE  
Klamath Falls OR 97602  
ATTN: Mike O'Brien

Clairmont Retirement Center  
151 N Williams  
Klamath Falls OR 97601

Comfort Care  
1735 Kane St  
Klamath Falls OR 97603

Crystal Terrace  
1000 Town Center Dr  
Klamath Falls OR 97601

Eldorado Heights Assisted Living Community  
2130 Eldorado Bl  
Klamath Falls OR 97601

Linkville House  
ATTN: Tracey Amaral  
2437 Kane Street  
Klamath Falls OR 97603

Pelican Pointe Assisted Living & Memory Care  
615 Washburn Way  
Klamath Falls OR 97603

Oregon Institute of Technology  
3201 Campus Dr  
Klamath Falls OR 97601

Klamath Community College  
7390 South 6<sup>th</sup> Street  
Klamath Falls OR 97603

Sandra Zaida  
Community Development Director  
PO Box 237  
Klamath Falls OR 97601

Alwin Turiel  
Klamath County Planning Manager  
305 Main St

Klamath Falls OR 97601  
Bill Brown  
Klamath County Chairman  
305 Main St  
Klamath Falls OR 97601

Jeff Ball  
City of Klamath Falls  
500 Klamath Avenue  
Klamath Falls OR 97601

Debbie Chapman  
STF Committee : Chairperson  
1726 Chinchilla Way  
Klamath Falls OR 97603

Margaret Rasner  
STF Committee Member  
6621 Hilton  
Klamath Falls OR 97603

Sylvia Christman  
STF Committee Member  
235 Haskins Ave  
Klamath Falls OR 97601

Tracey Amaral  
STF Committee Member  
6033 Shasta Way  
Klamath Falls OR 97603

Caleb Vaughn  
STF Committee Member  
1640 N Eldorado  
Klamath Falls OR 97601

Virginia Bilyeu  
STF Committee Member  
2175 Eldorado #304  
Klamath Falls OR 97601

Seniors & People with Disabilities  
714 Main St  
Klamath Falls OR 97601

DHS  
Children, Adults & Families  
700 Klamath Ave, Suite 100  
Klamath Falls OR 97601

Klamath County Mental Health  
3314 Vandenburg Rd  
Klamath Falls OR 97603

Klamath County Public Health Department  
403 Pine St  
Klamath Falls OR 97601

Vocational Rehabilitation  
801 Oak St  
Klamath Falls OR 97601

MWMC  
2865 Daggett Ave  
Klamath Falls OR  
Contact Person: Laura Drew, Director of Patient Resources

Klamath Radiology  
2900 Daggett Ave  
Klamath Falls OR 97601

Cascade East  
2801 Daggett Ave  
Klamath Falls OR 97601

Occupational Health  
2621 Crosby Ave  
Klamath Falls OR 97603

Peak Performance  
2621 Crosby Ave  
Klamath Falls OR 97603

Cancer Treatment Center  
2610 Uhrmann  
Klamath Falls OR 97601

West Dialysis Center  
2230 N Eldorado  
Klamath Falls OR 97601

Klamath Regional Rehabilitation  
711 Washburn Way  
Klamath Falls OR 97603

VA Clinic  
2819 Dahlia St  
Klamath Falls OR 97601

Klamath Open Door Clinic  
2074 South 6<sup>th</sup>  
Klamath Falls OR 97601

Klamath Walk-In Care Center  
2655 Shasta Way Suite 7  
Klamath Falls OR 97603

Klamath Medical Clinic  
1905 Main St  
Klamath Falls OR 97601

Disabled American Veterans  
2809 Avalon  
Klamath Falls OR 97603

Klamath Falls City Schools  
1336 Avalon St  
Klamath Falls OR 97603

American Council for the Blind  
ATTN: Jan Chance  
3500 Summers Lane #27  
Klamath Falls OR 97603

Klamath Housing Authority  
1445 Avalon  
Klamath Falls OR 97603

Lutheran Community Services  
2545 Eldorado  
Klamath Falls OR 97601

Oasis  
900 Richmond St  
Klamath Falls OR 97601

Developmental Systems Ave  
1234 Oak St  
Klamath Falls OR 97601

REACH, Inc  
ATTN: Cindy Meecham or Chuck Smith  
2300 Maywood  
Klamath Falls OR 97601

Goodwill  
3401 Washburn Way  
Klamath Falls OR 97603

Early Childhood Intervention  
2838 Eberlein  
Klamath Falls OR 97603

Klamath Falls Gospel Mission  
PO Box 87  
Klamath Falls OR 97601  
ATTN: Kent Berry

The Salvation Army  
1803 Main St  
Klamath Falls OR 97601  
ATTN: Debi Leighton

Klamath Lake Counties  
Community Action Services  
305 Main St  
Klamath Falls OR 97601  
ATTN: Beverly Leigh

SPOKES  
415 Main St  
Klamath Falls OR 97601

Integral Youth Services  
115 N 10<sup>th</sup> St  
Klamath Falls OR 97601

Klamath Crisis Center  
PO Box 1358  
Klamath Falls OR 97601

The Shuttle  
445 S Spring St  
Klamath Falls OR 97601

Classic Taxi  
Klamath Falls OR 97603

Klamath Tribes  
PO Box 436  
Chiloquin OR 97624

Millennium Transport  
PO Box 1088  
North Bend OR 97459

Klamath Youth Development  
2200 N Eldorado  
Klamath Falls OR 97601

Luther Square Retirement Village  
2314 Homedale Rd  
Klamath Falls OR 97603

Marquis Care at Plum Ridge  
1401 Bryant Williams Dr  
Klamath Falls OR 97601

Gerry Baksys  
Herald & News  
PO Box 788  
Klamath Falls OR 97601

Kla-Mo-Ya Casino  
34333 Hwy 97 North  
Chiloquin, OR 97624

Wemble House  
121 Iowa St.  
Klamath Falls, OR 97601

Pe'Peek'Aak Congregate  
P.O.Box 1275  
Chiloquin, OR 97624

KCTC "Klamath Community Treatment  
Center"  
5160 Summers Lane  
Klamath Falls, OR 97603

KADA "Klamath Alcohol and Drug  
Abuse Inc."  
310 S. 5<sup>th</sup> Street  
Klamath Falls, OR 97601

Forest Service  
38500 Hwy 97 North  
Chiloquin, OR 97624

Chiloquin High School  
P.O.Box 297  
Chiloquin, OR 97624

Chiloquin Elementary School  
P.O.Box 375  
Chiloquin, OR 97624

Chiloquin Vision in Progress  
Attention: Chuck Wells  
P.O.Box 204  
Chiloquin, OR 97624

Chiloquin Community Center  
P.O.Box 204  
Chiloquin, OR 97624

Chiloquin City Hall  
Attention: Chiloquin City Council  
P.O.Box 196  
Chiloquin, OR 97624

Economic Development Committee  
Attention: Tom Burns  
30242 Hwy 97 North  
Chiloquin, OR 97624

The Village Clinic  
P.O.Box 357  
Chiloquin, OR 97624

Chiloquin Family Practice  
P.O.Box 466  
Chiloquin, OR 97624

*Jeld Wen  
3250 Lakeport Blvd  
Klamath Falls, OR 97601*

# Attachment 2

Copy of the cover letter and survey sent to the agencies listed in attachment 1.





**SOUTH CENTRAL OREGON**  
**ECONOMIC DEVELOPMENT DISTRICT**

PO Box 1529 • Klamath Falls, Oregon 97601  
Phone (541) 884-5593 • Fax (541) 884-6738

*Bill J  
Please complete*

November 21, 2008

Re: Special Transportation Fund Plan

Dear Stakeholder:

The Oregon Department of Transportation is requiring all districts that apply to receive funds for special transportation needs to have an approved plan to qualify.

In 2006 Basin Transit Service and the Klamath Tribes co-authored the Klamath Special Transportation Plan. The plan addresses the needs for seniors, disabled, and workforce transportation. The Plan was submitted to the Oregon Department of Transportation for review. They have asked us to obtain additional stakeholder input.

Please fill out the enclosed survey and return it to:

SCOEDD  
Attn: Christina  
PO Box 1529  
Klamath Falls, OR 97601

Thank you for your assistance with this project.

Sincerely,

*Christina Ingram*  
Christina Ingram  
Community Development Specialist  
SCOEDD

Enc. - Survey

Stakeholders Survey

PLEASE PRINT OR TYPE

Organization Name: \_\_\_\_\_

Mailing Address: \_\_\_\_\_  
\_\_\_\_\_

Telephone Number: \_\_\_\_\_

E Mail Address: \_\_\_\_\_

Contact Person: \_\_\_\_\_

Do you provide any transportation in Klamath County? Yes \_\_\_ No \_\_\_ If so,

On average how many people or transports do you provide per month? \_\_\_\_\_

On average how many people are below poverty line? \_\_\_\_\_

Number of clients age 60 years or older? \_\_\_\_\_

How many clients report disabilities? \_\_\_\_\_

If so, please list 5 major types.

Number of clients under the age of 55 that report disabilities? \_\_\_\_\_

Type of transport	Fixed bus route	_____
	Route deviated	_____
	Intercity bus & rail	_____
	Shuttle	_____
	Demand-response	_____
	Taxi	_____
	Vanpools	_____
	Rideshare	_____
	Volunteer driver programs	_____
	Other transportation services	_____

Do you overlap services with other providers or companies in Klamath County?  
If so, who and what services?

Where do the majority of your clients with disabilities request transports? Ex: Spokes Unlimited, AFS office, etc.

Where do the majority of your client's age 60 years old and older request transports? Ex: Senior Center, Doctor's appointments, grocery shopping, etc.

Where do the majority of your low-income clients request transports? Ex: AFS office, doctor's appointments, grocery shopping, etc.

Where do the majority of your low-income disabled clients live? Comfort Care \_\_\_  
Klamath Regional Rehabilitation Center \_\_\_ Linkville House \_\_\_  
Marquis Care at Plum Ridge \_\_\_ Pelican Pointe Assisted Living \_\_\_  
Hilyard apartments \_\_\_ Private Residence \_\_\_ other \_\_\_ If other please list.

What hours of operation does your organization operate its transport services?  
8:00 a.m. to 5:00 p.m. \_\_\_ Before 8:00 a.m. \_\_\_ After 5:00 p.m. \_\_\_ Other \_\_\_

What days does your organization operate its transport services? Please check all that apply. Monday through Friday \_\_\_ Sunday through Saturday \_\_\_ on holidays \_\_\_  
Other \_\_\_ if other please list. \_\_\_\_\_

What type of funding does your organization operate with?  
Federal Grants \_\_\_ Private \_\_\_ ODOT Grants \_\_\_ State Grants \_\_\_ Other \_\_\_  
If other please list. \_\_\_\_\_

What are your organization's service area boundaries? Klamath County \_\_\_  
Klamath Falls only \_\_\_ statewide \_\_\_ other \_\_\_ if other please list. \_\_\_\_\_

Does your organization have any travel time standards? Ex: No longer than 12 hours per day, etc.

Does your organization charge fares for transports? Ex: \$1.00 per passenger, \$1.00 per mile, etc. If so please explain.

What are your organizations program costs for your transports?

Are there any unmet needs or gaps in transportation that your organization sees?  
Please list all.

Does your organization consider there to be any wasteful duplication of services? If so, please explain.

Does your organization have any recommendations for any unmet needs or gaps in services?

Does your organization have a route map of your service area? If so please provide a copy.

What organizations do you partner or coordinate with?

# Attachment 3

Information provided by the Klamath Falls City Schools regarding their transportation for disabled students.

Stakeholders Survey

PLEASE PRINT OR TYPE

Organization Name: Klamath Falls City Schools  
Mailing Address: 1336 Avalon Street  
Klamath Falls, OR 97603  
Telephone Number: (541) 883-4700  
E Mail Address: feusahrensb@kfalls.k12.or.us  
Contact Person: Bill Feusahrens

Do you provide any transportation in Klamath County? Yes  No  If so,

On average how many people or transports do you provide per month? 4,639 per day

On average how many people are below poverty line? 5790

Number of clients age 60 years or older? None

How many clients report disabilities? 129

If so, please list 5 major types.

Mental Retardation      Other Health Impaired  
Developmentally Delayed      Multiple Handicapped  
Emotionally Disturbed

Number of clients under the age of 55 that report disabilities? 129

Type of transport	Fixed bus route	<input checked="" type="checkbox"/>
	Route deviated	<input checked="" type="checkbox"/>
	Intercity bus & rail	<input type="checkbox"/>
	Shuttle	<input checked="" type="checkbox"/>
	Demand-response	<input type="checkbox"/>
	Taxi	<input type="checkbox"/>
	Vanpools	<input type="checkbox"/>
	Rideshare	<input type="checkbox"/>
	Volunteer driver programs	<input type="checkbox"/>
	Other transportation services	<input type="checkbox"/>

Do you overlap services with other providers or companies in Klamath County?

If so, who and what services?

City Schools provide bus services to students who attend our schools. We have designated routes within the school district boundaries.

Where do the majority of your clients with disabilities request transports? Ex: Spokes

Unlimited, AFS office, etc.

Our students with disabilities have individual education plans (IEPs). If transportation is needed that request will become part of the student's IEP and transportation will be provided. The school district has the min-buses that provide transportation for these students.

Where do the majority of your client's age 60 years old and older request transports? Ex:

Senior Center, Doctor's appointments, grocery shopping, etc.

NA

Where do the majority of your low-income clients request transports? Ex: AFS office, doctor's appointments, grocery shopping, etc.

NA

Where do the majority of your low-income disabled clients live? Comfort Care \_\_\_

Klamath Regional Rehabilitation Center \_\_\_ Linkville House \_\_\_

Marquis Care at Plum Ridge \_\_\_ Pelican Pointe Assisted Living \_\_\_

Hilyard apartments \_\_\_ Private Residence  other \_\_\_ If other please list.

What hours of operation does your organization operate its transport services?

8:00 a.m. to 5:00 p.m. \_\_\_ Before 8:00 a.m. \_\_\_ After 5:00 p.m. \_\_\_ Other \_\_\_

6:00 AM - 4:30 PM

What days does your organization operate its transport services? Please check all that

apply. Monday through Friday  Sunday through Saturday \_\_\_ on holidays \_\_\_

Other \_\_\_ if other please list. \_\_\_\_\_

What type of funding does your organization operate with?

Federal Grants \_\_\_ Private \_\_\_ ODOT Grants \_\_\_ State Grants  Other \_\_\_

If other please list.

70% of our school transportation costs are reimbursed by the state with the exception of extracurricular activities.

What are your organization's service area boundaries? Klamath County \_\_\_

Klamath Falls only  statewide \_\_\_ other \_\_\_ if other please list. \_\_\_\_\_

There may be a few stops outside the city limits, since we service Makama H.S. as well.

Does your organization have any travel time standards? Ex: No longer than 12 hours per day, etc.

Drivers can work no more than 10 hours per day.

Does your organization charge fares for transports? Ex: \$1.00 per passenger, \$1.00 per mile, etc. If so please explain.

NA

What are your organizations program costs for your transports?

\$1,453,202

Are there any unmet needs or gaps in transportation that your organization sees?  
Please list all.

No

Does your organization consider there to be any wasteful duplication of services? If so, please explain.

No

Does your organization have any recommendations for any unmet needs or gaps in services?

No

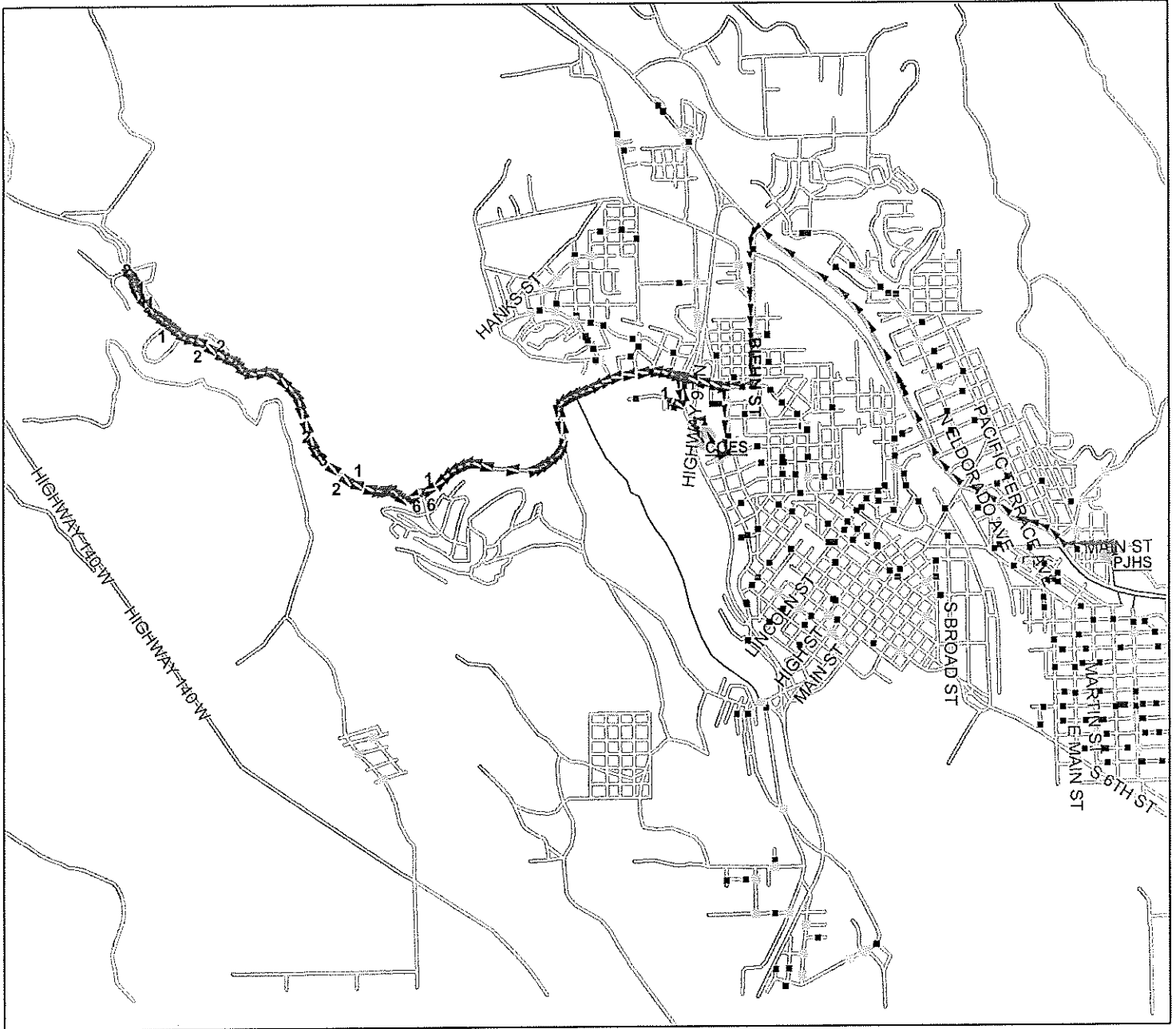
Does your organization have a route map of your service area? If so please provide a copy.

What organizations do you partner or coordinate with?

Klamath County School District



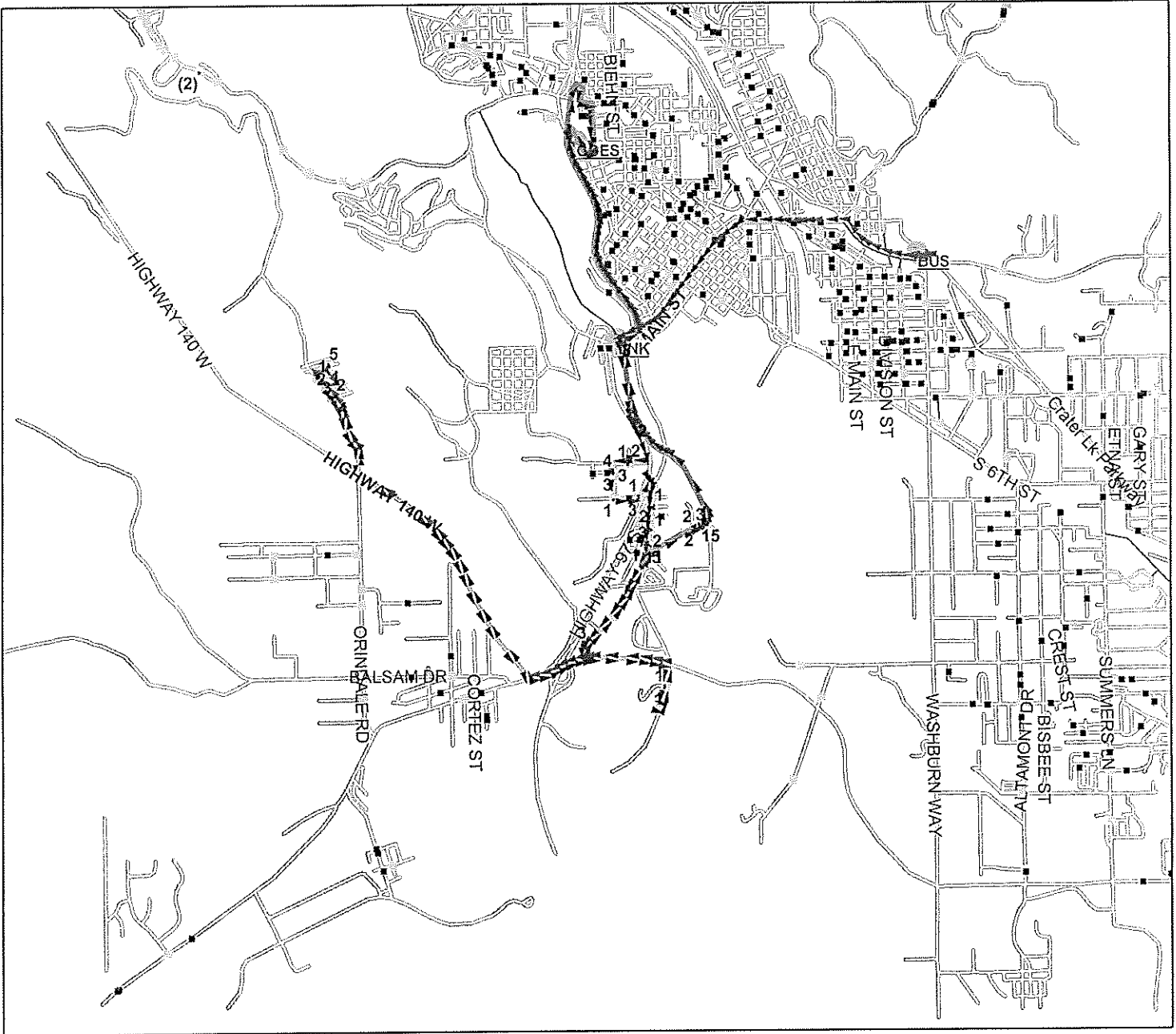
# Klamath Falls School District Route Map



Route: **COES.001**  
 Vehicle: **58**  
 Anchor: **COES**  
 Start Time: **7:12 AM**  
 Pickups: **35**  
 Distance: **10.79 mi.**

Desc: **CONGER LAKESHORE**  
 Driver: **McDonnell, Sandra**  
 Max Load: **35**  
 Arrival Time: **8:00 AM**  
 Transfers On: **0**  
 Transfers Off: **0**  
 Days: **MTHF**

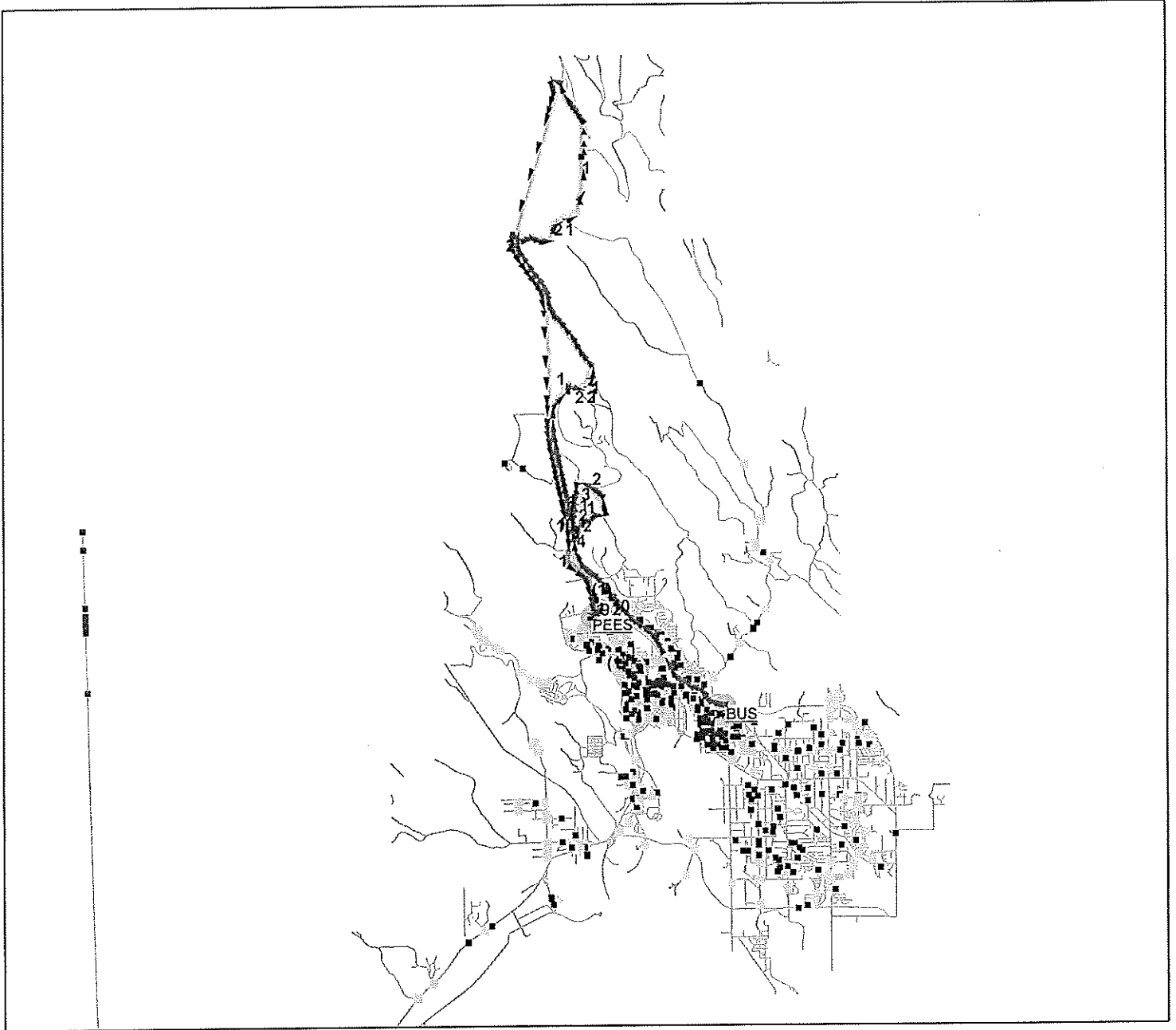
### Klamath Falls School District Route Map



Route: **COES.002**  
Vehicle: **75**  
Anchor: **COES**  
Start Time: **6:57 AM**  
Pickups: **107**  
Distance: **16.50 mi.**

Desc: **Conger Greensprings**  
Driver: **Jones , Ellen**  
Max Load: **107**  
Arrival Time: **8:00 AM**  
Transfers On: **0**  
Transfers Off: **0**  
Days: **MTWHF**

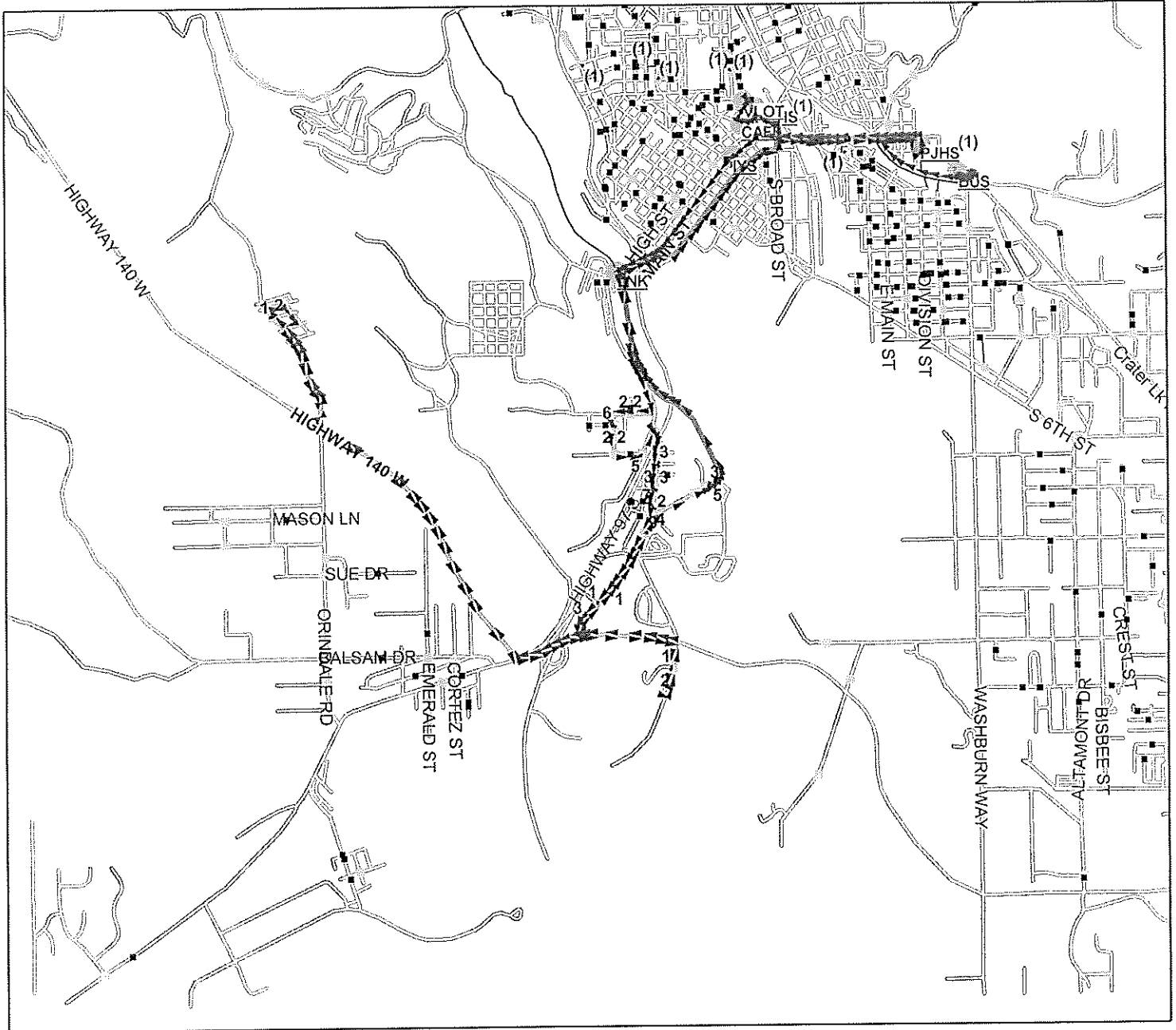
### Klamath Falls School District Route Map



Route: PEL..003  
Vehicle: 72  
Anchor: PEES  
Start Time: 7:10 AM  
Pickups: 77  
Distance: 27.28 mi.

Desc: ALGOMA/ WOCUS/SH PINE  
Driver: Lockhart, Karen  
Max Load: 77  
Arrival Time: 8:15 AM  
Transfers On: 0  
Transfers Off: 0  
Days: MTWHF

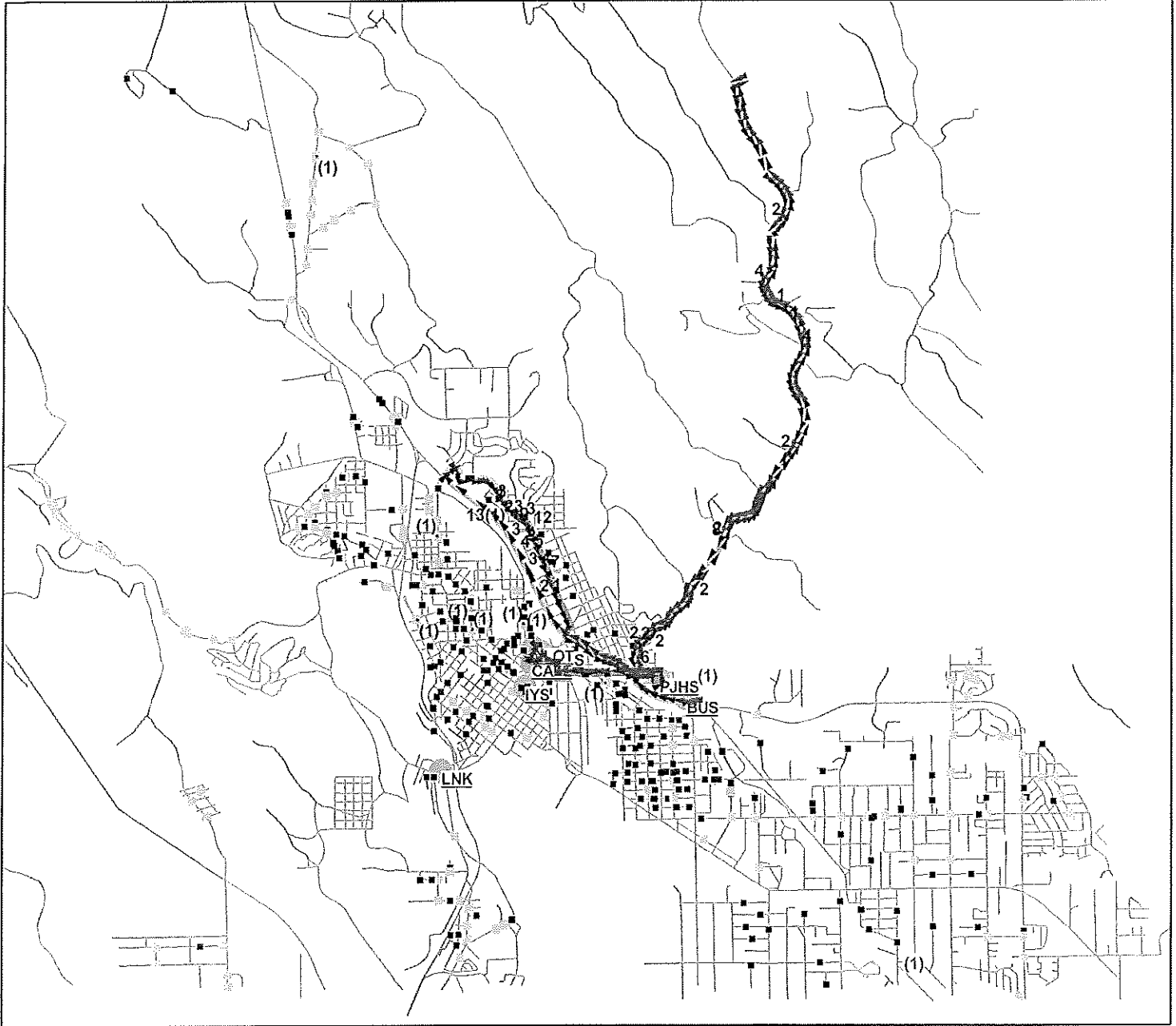
### Klamath Falls School District Route Map



Route: **KP.004**  
 Vehicle: **63**  
 Anchor: **KUHS**  
 Start Time: **6:33 AM**  
 Pickups: **81**  
 Distance: **17.28 mi.**

Desc: **Greensprings**  
 Driver: **Plumondore, Phil**  
 Max Load: **81**  
 Arrival Time: **7:40 AM**  
 Transfers On: **0**  
 Transfers Off: **2**  
 Days: **MTHF**

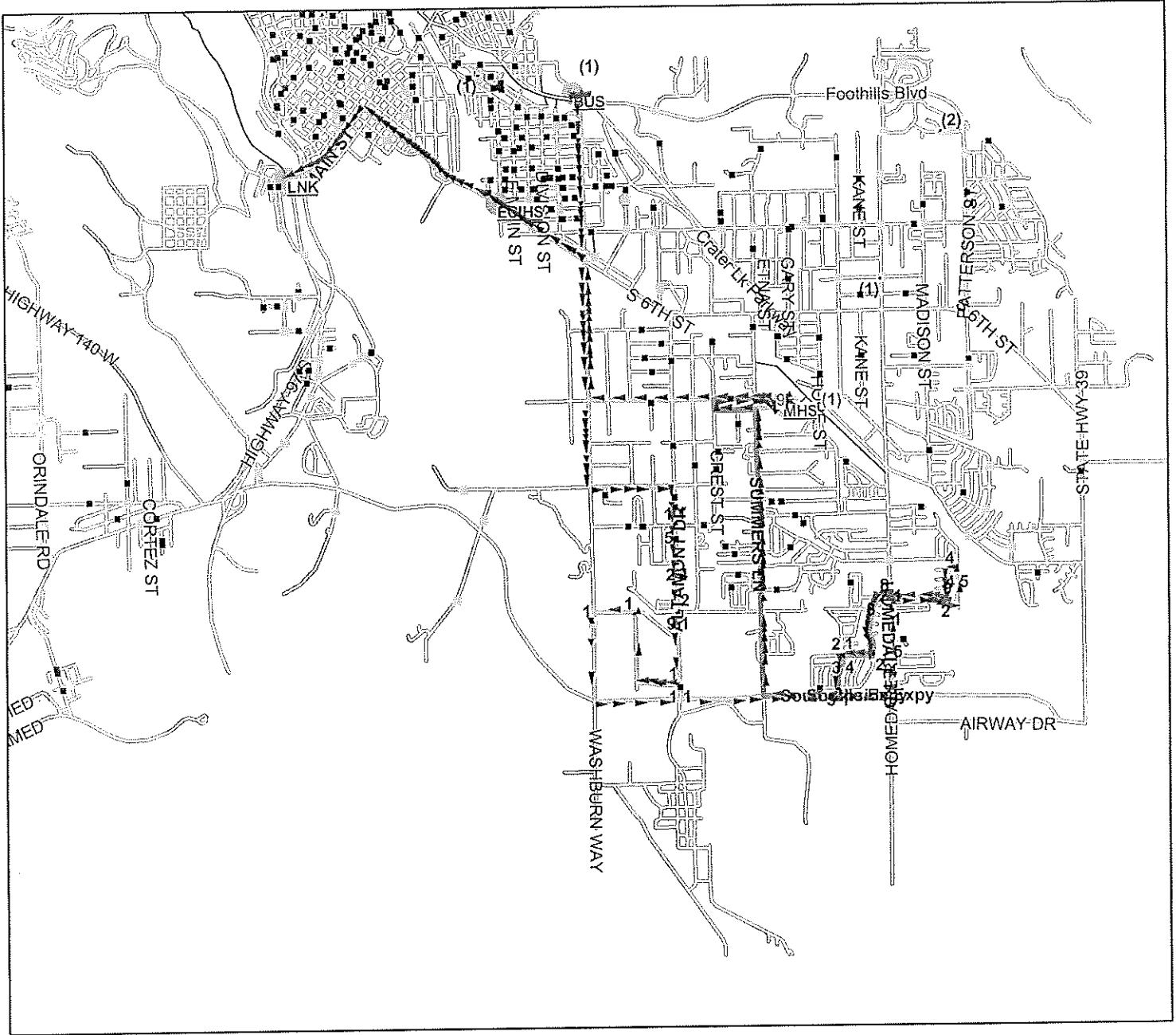
# Klamath Falls School District Route Map



Route: KP..005  
Vehicle: 68  
Anchor: KUHS  
Start Time: 6:40 AM  
Pickups: 149  
Distance: 16.39 mi.

Desc: Old Ft Rd.  
Driver: Hesla , Rayette  
Max Load: 149  
Arrival Time: 7:40 AM  
Transfers On: 0  
Transfers Off: 1  
Days: MTHF

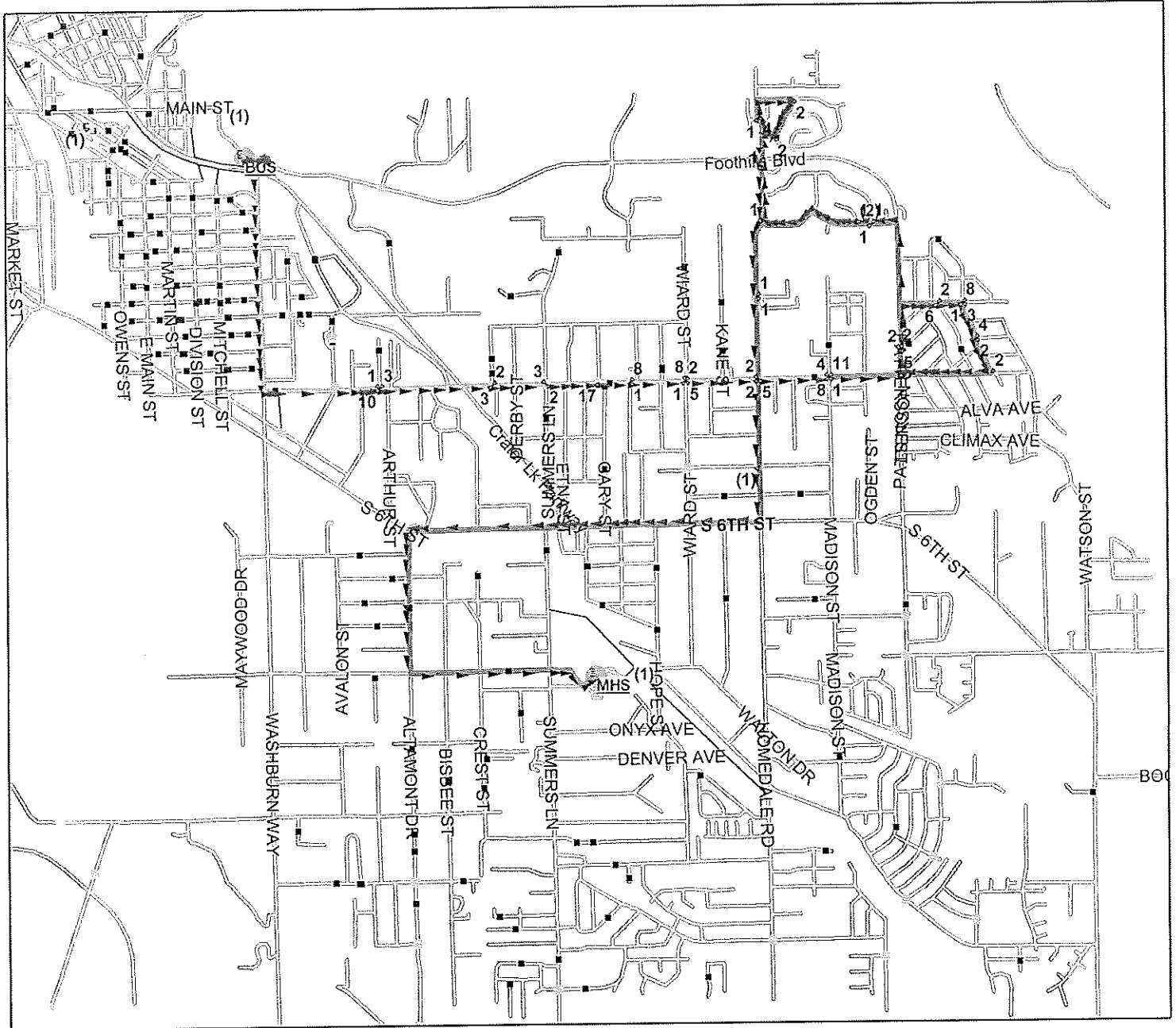
# Klamath Falls School District Route Map



Route: MHS..006  
 Vehicle: 86  
 Anchor: LNK  
 Start Time: 6:42 AM  
 Pickups: 97  
 Distance: 17.31 mi.

Desc: MHS altamont/gatewood  
 Driver: Robinson, Marie  
 Max Load: 97  
 Arrival Time: 8:00 AM  
 Transfers On: 9  
 Transfers Off: 0  
 Days: MTHF

# Klamath Falls School District Route Map



Route: **MHS..007**  
 Vehicle: **78**  
 Anchor: **MHS**  
 Start Time: **6:49 AM**  
 Pickups: **153**  
 Distance: **9.93 mi.**

Desc: **MHS Shasta/ Foothills**  
 Driver: **Kezer , Jack**  
 Max Load: **153**  
 Arrival Time: **7:40 AM**  
 Transfers On: **0**  
 Transfers Off: **0**  
 Days: **MTHF**

### Klamath Falls School District Route Map

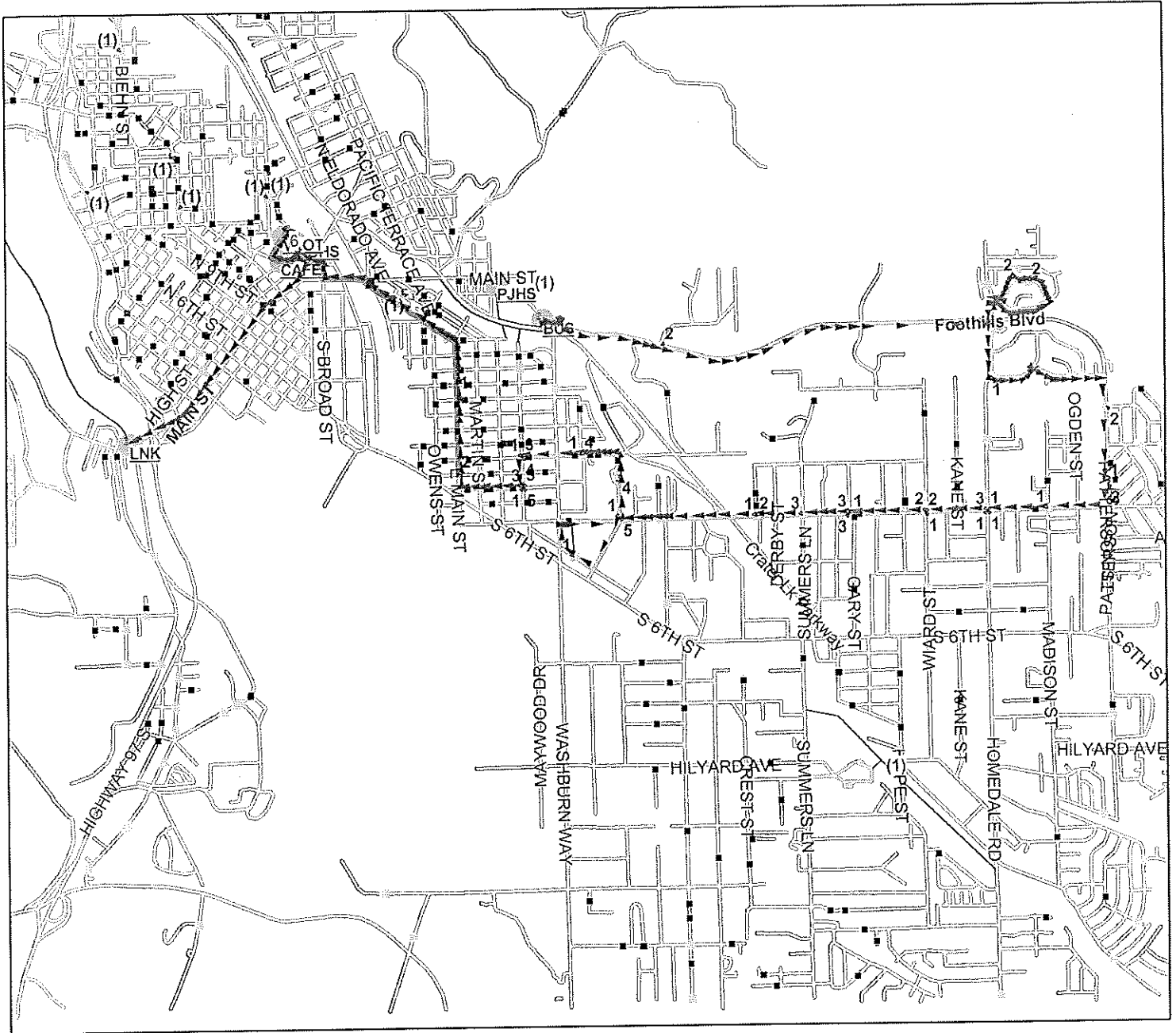


Route: KP..008  
Vehicle: 64  
Anchor: KUHS  
Start Time: 6:37 AM  
Pickups: 54  
Distance: 22.22 mi.

Desc: Algoma/ SP/ Wocus  
Driver: White , Pam  
Max Load: 54  
Arrival Time: 7:40 AM  
Transfers On: 0  
Transfers Off: 1  
Days: MTHF



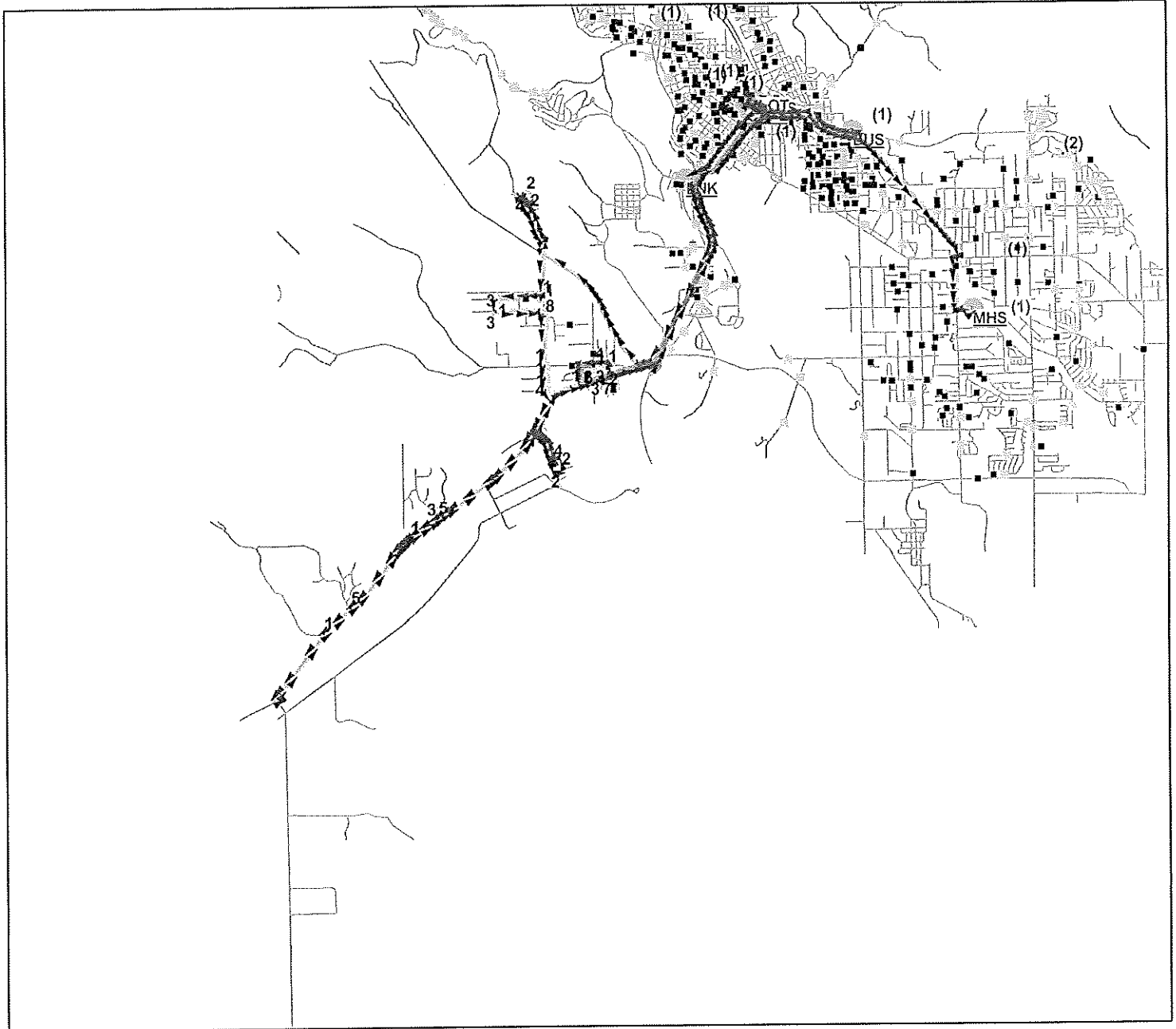
# Klamath Falls School District Route Map



Route: **KU..009**  
Vehicle: **60**  
Anchor: **LNK**  
Start Time: **6:54 AM**  
Pickups: **78**  
Distance: **10.73 mi.**

Desc: **KU shasta / mills**  
Driver: **Hoffman , Gerry**  
Max Load: **78**  
Arrival Time: **7:50 AM**  
Transfers On: **6**  
Transfers Off: **0**  
Days: **MTHF**

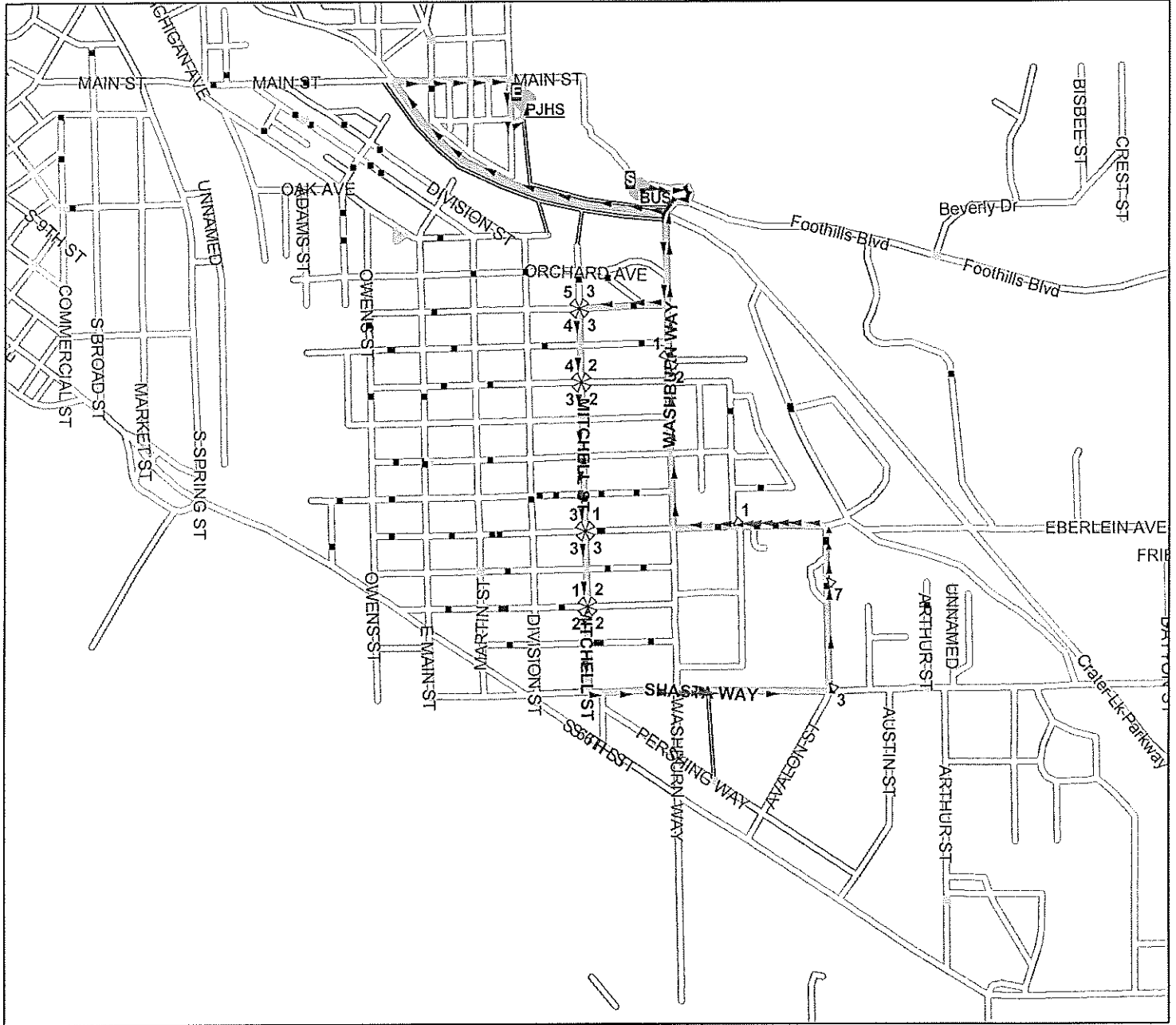
### Klamath Falls School District Route Map



Route: MKH..010  
Vehicle: 87  
Anchor: MHS  
Start Time: 6:11 AM  
Pickups: 88  
Distance: 29.28 mi.

Desc: Stewart Lenox  
Driver: Hinshaw, Shawnee  
Max Load: 88  
Arrival Time: 7:40 AM  
Transfers On: 0  
Transfers Off: 4  
Days: MTHF

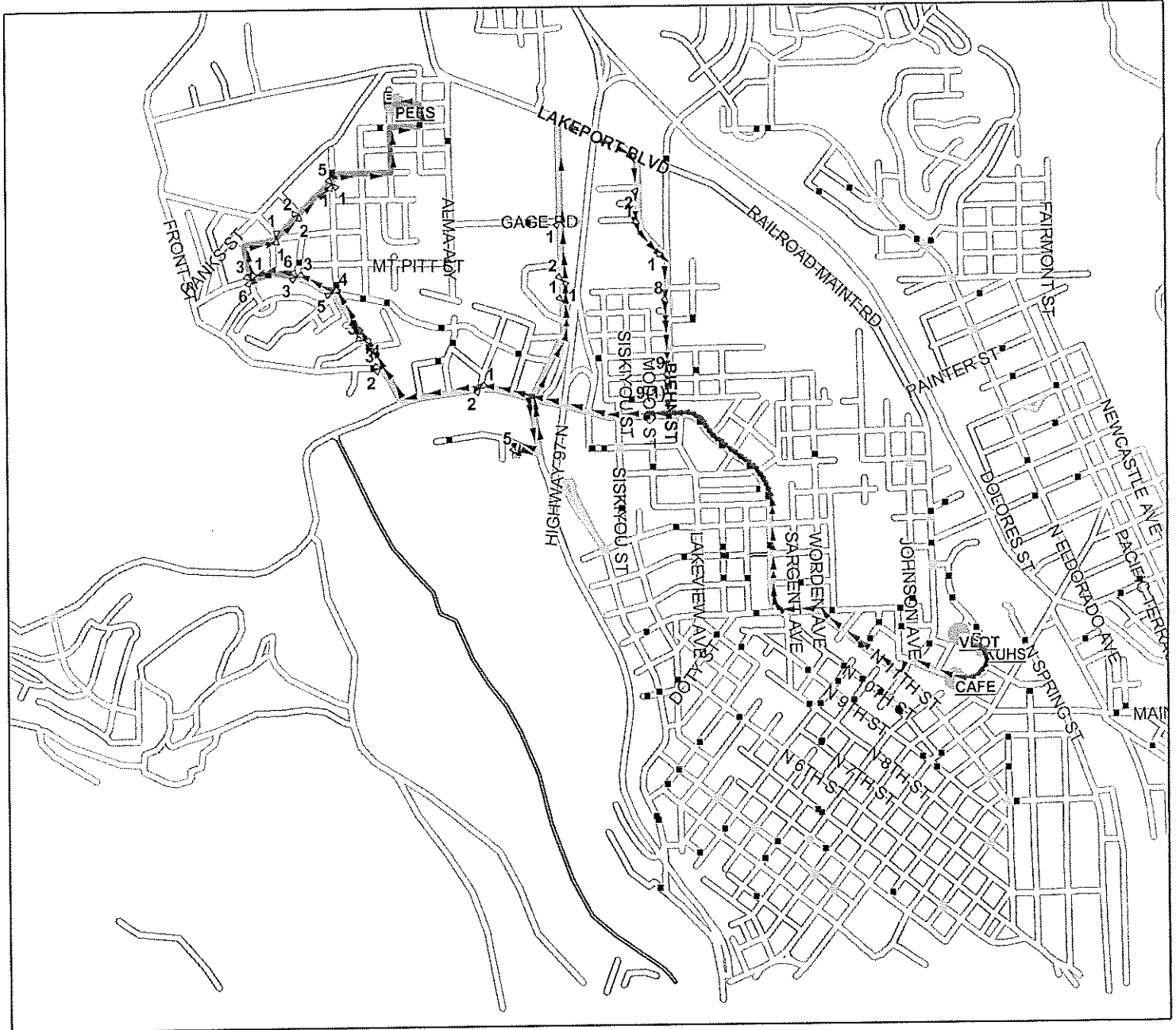
### Klamath Falls School District Route Map



Route: **POJH.011**  
 Vehicle: **74**  
 Anchor: **PJHS**  
 Start Time: **7:08 AM**  
 Pickups: **57**  
 Distance: **3.36 mi.**

Desc: **Mills**  
 Driver: **Distafino, Tim**  
 Max Load: **57**  
 Arrival Time: **7:27 AM**  
 Transfers On: **0**  
 Transfers Off: **0**  
 Days: **MTHF**

### Klamath Falls School District Route Map



Route: **PEL..012**  
Vehicle: **79**  
Anchor: **PEES**  
Start Time: **7:40 AM**  
Pickups: **99**  
Distance: **5.35 mi.**

Desc: **PEL CITY**  
Driver: **Draper , Carla**  
Max Load: **99**  
Arrival Time: **8:15 AM**  
Transfers On: **0**  
Transfers Off: **0**  
Days: **MTHF**

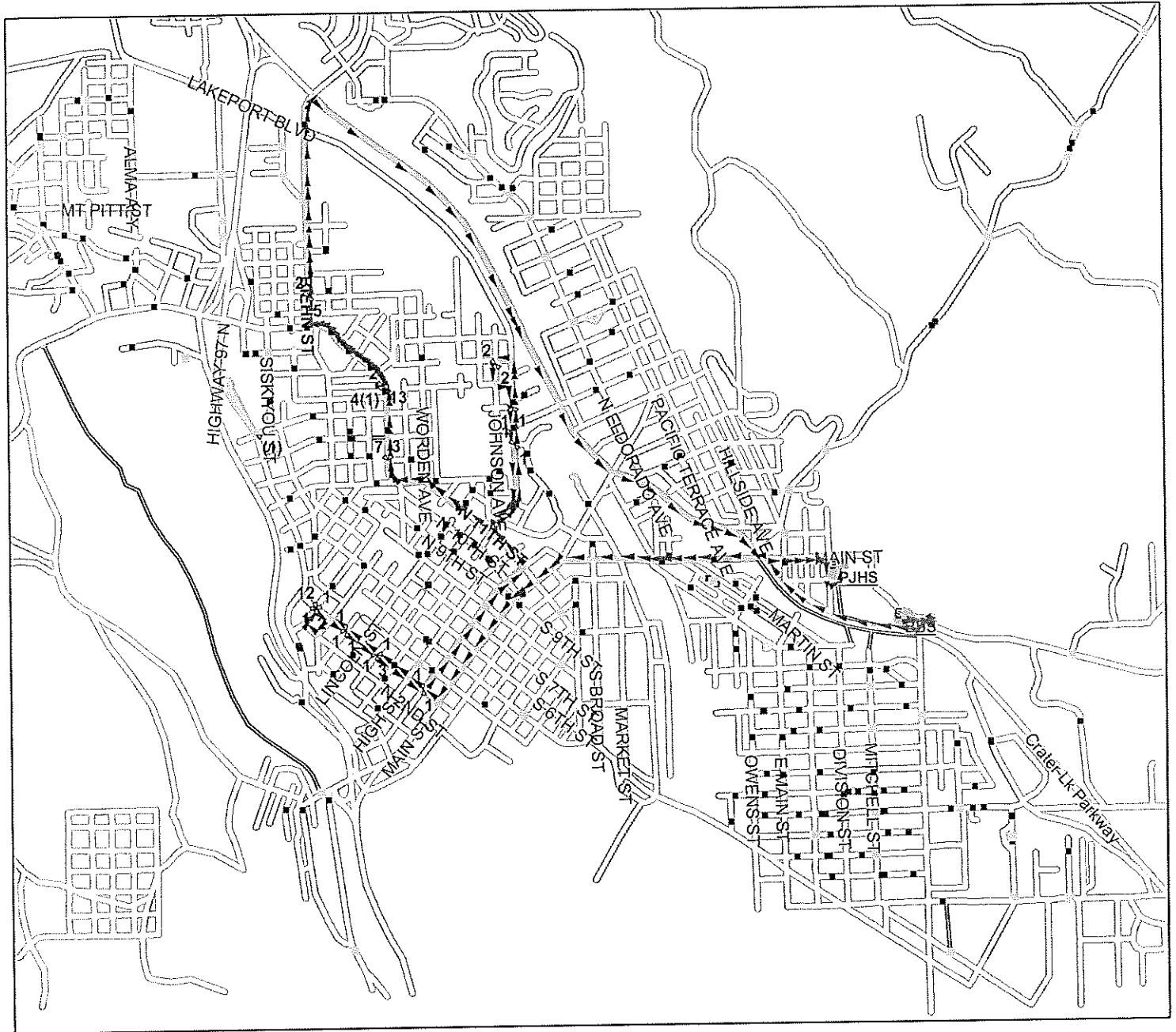
### Klamath Falls School District Route Map



Route: MHS..013  
 Vehicle: 59  
 Anchor: MHS  
 Start Time: 6:54 AM  
 Pickups: 101  
 Distance: 11.30 mi.

Desc: MHS cottage/ harlan  
 Driver: Gates , Mark  
 Max Load: 101  
 Arrival Time: 7:40 AM  
 Transfers On: 0  
 Transfers Off: 6  
 Days: MTHF

## Klamath Falls School District Route Map



Route: **POJH.014**  
 Vehicle: **57**  
 Anchor: **PJHS**  
 Start Time: **6:55 AM**  
 Pickups: **70**  
 Distance: **8.41 mi.**

Desc: **Ore ave**  
 Driver: **Deana, Grant**  
 Max Load: **70**  
 Arrival Time: **7:30 AM**  
 Transfers On: **0**  
 Transfers Off: **0**  
 Days: **MTHF**

# Attachment 4

Copy of survey given to Basin Transit Service riders.

# Basin Transit Riders Survey

This survey is to help identify the reasons people use the bus. The results will be confidential and information will be used to document usage for the Basin STF Plan. **You are not required to participate in the survey to ride the bus. Your assistance is voluntary and appreciated.**

1. The Bus is my primary source of transportation                      YES                      NO

2. I ride the bus to: \_\_\_\_\_

- A) work                      B) school                      C) shopping                      D) medical appointments  
E) entertainment                      F) recreation                      G) everything - only transportation source

3. The bus schedule fits my needs: \_\_\_\_\_

- A) always                      B) most of the time                      C) sometimes                      D) hardly ever  
E) not at all

4. I regularly use the following forms of transportation:

- A) Bus                      B) Taxi                      C) Ride with Friend/Family                      D) Drive myself  
E) Walk                      F) Bicycle

Comments: \_\_\_\_\_  
\_\_\_\_\_  
\_\_\_\_\_  
\_\_\_\_\_

**Thank you for your participation**



# Attachment 5

The following pages are the listing of vehicles available to Klamath County as a whole for Special Transportation eligible population. The list does not include vehicles owned by the assisted living facilities or the for-profit taxi and bus agencies that provide services purchased by STF providers.

# Klamath Tribes

<b>VEHICLE DATA</b>			
<b>LICENSE PLATE# (if changed, also list VIN)</b>	<b>ENTER CURRENT ODOMETER MILEAGE</b>	<b>ENTER DATE ODOMETER READ</b>	<b>CHECK VEHICLE CONDITION</b>
07 Subaru Outback E240496	11,536	6-25-08	<input checked="" type="checkbox"/> New <input type="checkbox"/> Excellent <input type="checkbox"/> Good <input type="checkbox"/> Fair <input type="checkbox"/> Poor
07 Honda Odyssey E237534	14,459	6-27-08	<input checked="" type="checkbox"/> New <input type="checkbox"/> Excellent <input type="checkbox"/> Good <input type="checkbox"/> Fair <input type="checkbox"/> Poor
06 Ford Bus E237527	38,784	6-30-08	<input checked="" type="checkbox"/> New <input type="checkbox"/> Excellent <input type="checkbox"/> Good <input type="checkbox"/> Fair <input type="checkbox"/> Poor
05 Chevy Uplander E231339	37,214	6-30-08	<input type="checkbox"/> New <input checked="" type="checkbox"/> Excellent <input type="checkbox"/> Good <input type="checkbox"/> Fair <input type="checkbox"/> Poor
05 Chevy Venture E231326	54,243	6-24-08	<input type="checkbox"/> New <input checked="" type="checkbox"/> Excellent <input type="checkbox"/> Good <input type="checkbox"/> Fair <input type="checkbox"/> Poor
05 Honda CR-V E231330	42,618	6-30-08	<input type="checkbox"/> New <input checked="" type="checkbox"/> Excellent <input type="checkbox"/> Good <input type="checkbox"/> Fair <input type="checkbox"/> Poor
03 Ford Bus E227735	138,010	6-27-08	<input type="checkbox"/> New <input type="checkbox"/> Excellent <input type="checkbox"/> Good <input checked="" type="checkbox"/> Fair <input type="checkbox"/> Poor
99 Dodge E213770	194,101	6-25-08	<input type="checkbox"/> New <input type="checkbox"/> Excellent <input type="checkbox"/> Good <input checked="" type="checkbox"/> Fair <input type="checkbox"/> Poor
99 Plymouth E213766	179,187	6-25-08	<input type="checkbox"/> New <input type="checkbox"/> Excellent <input type="checkbox"/> Good <input checked="" type="checkbox"/> Fair <input type="checkbox"/> Poor

BASIN TRANSIT SERVICE  
FLEET INVENTORY  
August 18, 2008

BTS Number &	Accessible Feature	Make	License	Year	VIN #
<u>PASSENGER VANS</u>					
05-01	Ramp	Chevrolet Venture	E229636	2005	1GBDV13E55D135785
05-02	Ramp	Chevrolet Venture	E229637	2005	1GBDV13E85D126210
05-03	Ramp	Chevrolet Venture	E231313	2005	1GBDV13E25D125442
<u>SERVICE VEHICLES</u>					
*97-26		GMC Pickup 4WD	E200938	1997	1GTEK14R7VZ514686
97-27		GMC Pickup 4WD	E203471	1997	1GTGK24R4VZ538412
<u>STAFF VEHICLES</u>					
*06-01		Ford Escape AWD	E231345	2006	1FMYU92ZX6KA71657
*96-02		GMC Van - AWD	E199335	1996	1GKEL19W7TB521434
*98-01		Honda CRV- AWD	E210351	1998	JHLRD1845WC094928
<u>PASSENGER BUSES</u>					
2001	Ramp Lift U	Gillig Low Floor	E213796	2000	15GGB2213Y1071041
2002	Ramp Lift U	Gillig Low Floor	E213795	2000	15GGB2215Y1071042
2003	Ramp Lift U	Gillig Low Floor	E213794	2000	15GGB2217Y1071043
2004	Ramp Lift U	Gillig Low Floor	E216697	2001	15GGB221911071809
2005	Ramp Lift U	Gillig Low Floor	E216696	2001	15GGB221511071810
2006	Ramp Lift U	Gillig Low Floor	E216698	2001	15GGB221711071811
2007	Ricon Lift	ElDorado Escort RE	E222226	2002	1N9EBAC642C084153
2008	Ricon Lift	ElDorado Escort RE	E222227	2002	1N9EBAC662C084154**
2009	Braun Lift	FreightlinerCTS	E242997	2008	4UZAB0BV97CY46946
*9301	Lift-U	Gillig Phantom	E165637	1988	15GCA0915J1082513
*9304	Lift-U	Gillig Phantom	E165640	1988	15GCA0910J1082516
*9305	Lift-U	Gillig Phantom	E165641	1988	15GCA0912J1082517
*01-04	Braun Lift	Ford Aerotech 240	E219362	2001	1FDXE45S41HA84016
00-05	Ricon Lift	Ford	E216655	2000	1FDXE45S1YHB64450
01	Braun Lift	Chance Trolley AH-28	E200929	1996	1C9S2HAS2TW535036

GVW's: Gillig Phantom 34,700; Gillig Low Floor 39,500; Aerotech 14,050; Escort RE 22,500

- Indicates vehicles which are owned fully by the District. All other vehicles have a lien held by ODOT.
- Indicates the bus replaced by the purchase of 2009

## Klamath Basin Senior Citizen's Council

VEHICLE DATA			
LICENSE PLATE # (if changed, also list VIN)	ENTER CURRENT ODOMETER MILEAGE	ENTER DATE ODOMETER READ	VEHICLE CONDITION
E237526 06 Eldorado Amerivan #4	26,708	9/30/2008	<input checked="" type="checkbox"/> New <input type="checkbox"/> Good <input type="checkbox"/> Fair <input type="checkbox"/> Poor
E216660 01 Dodge VAN#2	113,459	9/30/2008	<input type="checkbox"/> New <input type="checkbox"/> Good <input checked="" type="checkbox"/> Fair <input type="checkbox"/> Poor
E224681 03 Ford VAN#3	79493	9/30/2008	<input type="checkbox"/> New <input checked="" type="checkbox"/> Good <input type="checkbox"/> Fair <input type="checkbox"/> Poor
E212830 07 Eldorado Chev #6 <i>VAN</i>	21633	9/30/2008	<input checked="" type="checkbox"/> New <input type="checkbox"/> Good <input type="checkbox"/> Fair <input type="checkbox"/> Poor
			<input type="checkbox"/> New <input type="checkbox"/> Good <input type="checkbox"/> Fair <input type="checkbox"/> Poor
			<input type="checkbox"/> New <input type="checkbox"/> Good <input type="checkbox"/> Fair <input type="checkbox"/> Poor
			<input type="checkbox"/> New <input type="checkbox"/> Good <input type="checkbox"/> Fair <input type="checkbox"/> Poor