

Agenda for Public Open House

4:30
Sign In

5:00
Presentation

5:30
Review
Display Boards

5:30
Project List
Feedback

2018 Billings Urban Area Long Range Transportation Plan

Open House #2
September 25, 2018



Open House Goals

- 1 Provide an update on progress to date
- 2 Collect public feedback on LRTP project list

What is an LRTP?

A long range transportation plan (LRTP):

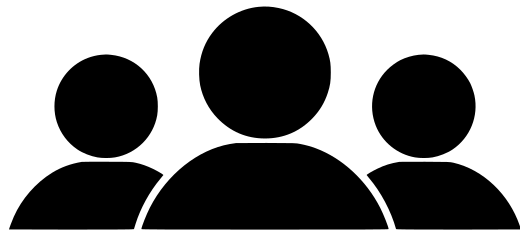
- Outlines the long-range vision for the transportation system
- Lists all transportation improvements that are expected in the next 20 years

Why are we updating it?

Metropolitan areas with populations over 50,000 (such as the Billings urban area) are federally required to update their LRTP every 4 years

Updating this document helps Billings define its vision for the transportation system and plan future projects

Who is involved?



Resource Agencies and Public

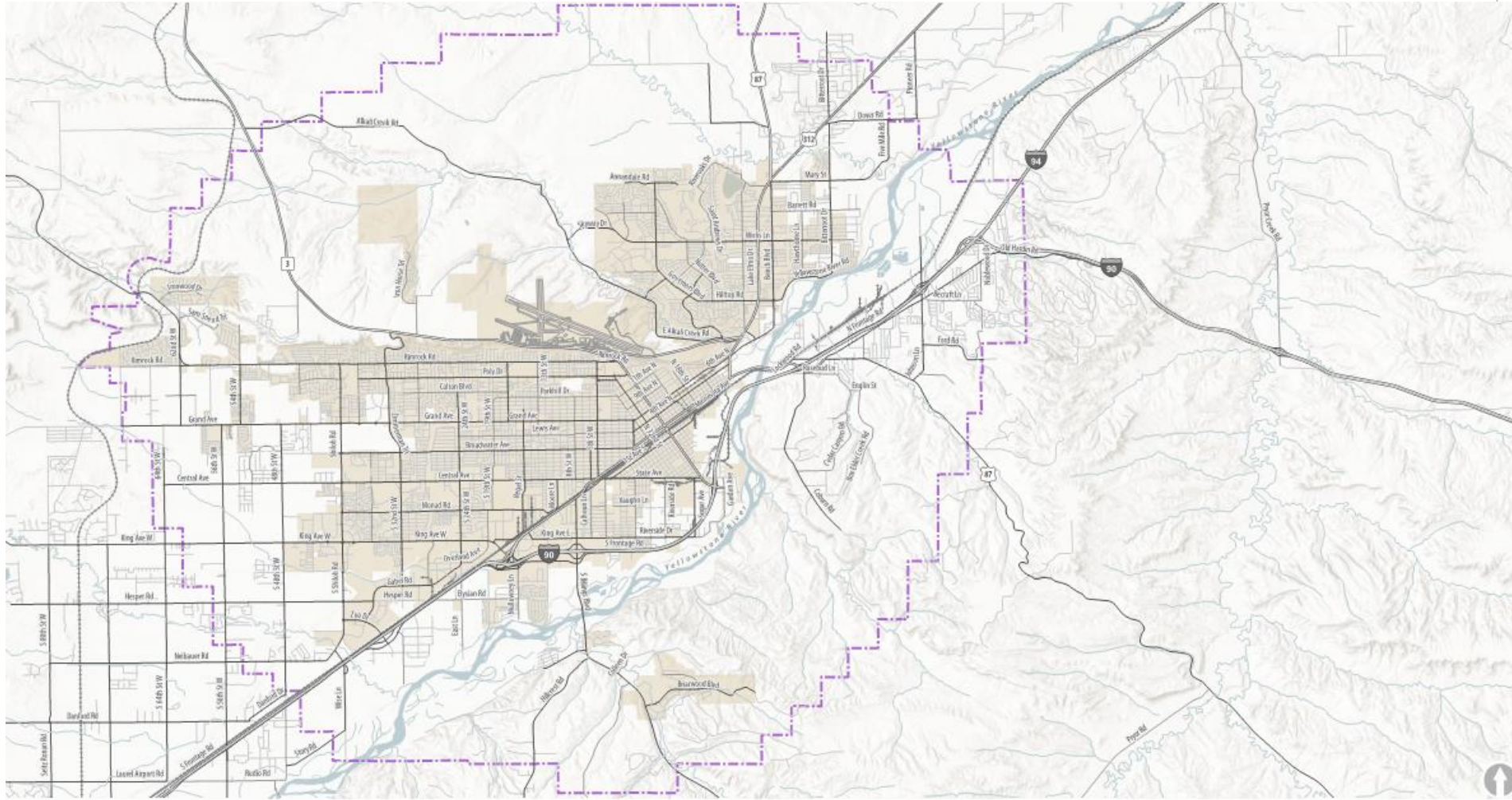


When is this update occurring?

L RTP TIMELINE



Where is the study area?



 Study Area  City of Billings

[Introduction](#)

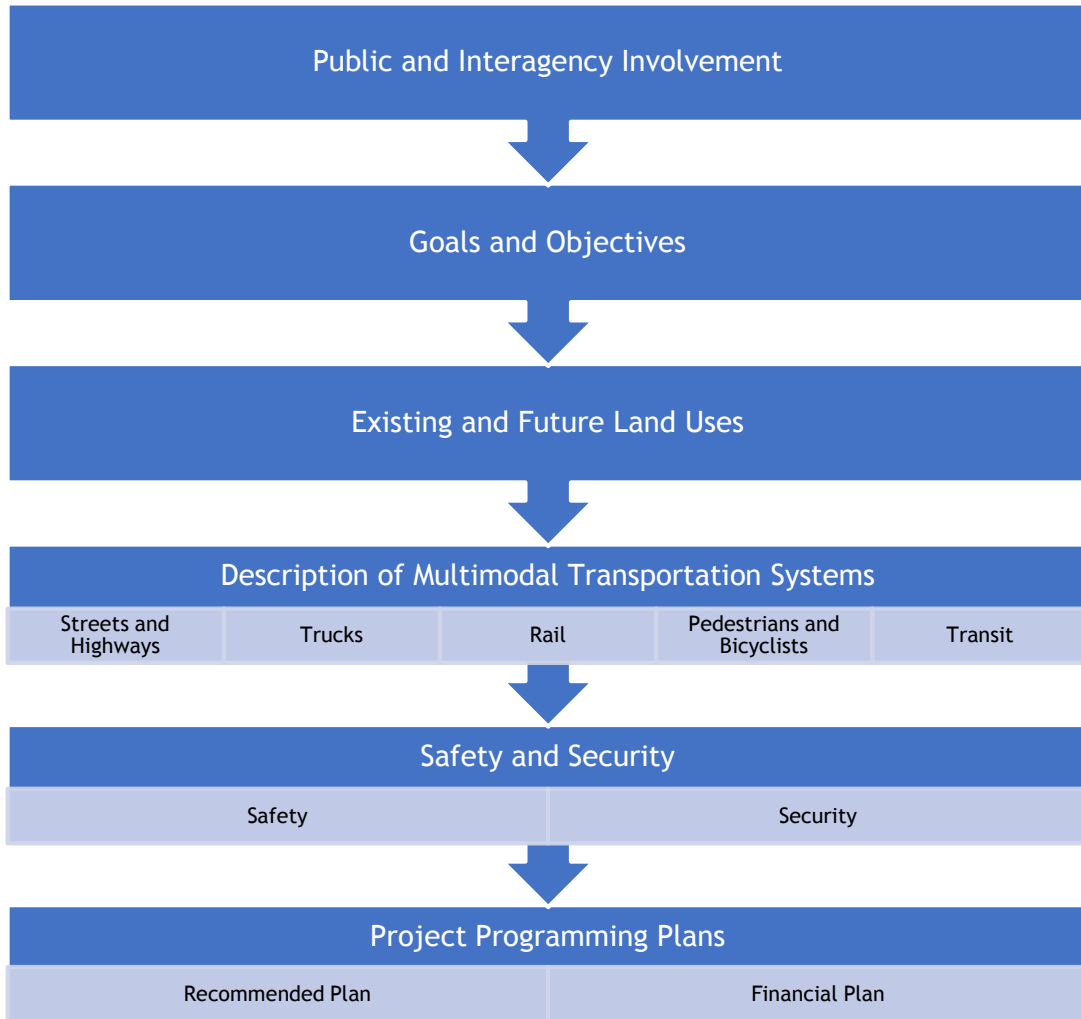
[Background](#)

[Draft Plan](#)

[Today's Goals](#)

[Wrap-Up](#)

What are the elements of the 2018 LRTP?



L RTP Goals

1. Safety

- Develop a safe transportation system

2. Functional Integrity and Efficiency

- Optimize, preserve, and enhance the existing transportation system

3. Prioritized Improvements

- Identify and prioritize projects that mitigate deficiencies, maximize the use of existing facilities, and balance anticipated needs with available funding

4. Environment

- Develop a transportation system that protects the natural environment and promotes a healthy, sustainable community

5. Public Transit and Transportation

- Create a transportation system that supports the practical and efficient use of transit

6. Pedestrians and Bicyclists

- Create a transportation system that supports the practical and efficient use of active transportation such as walking and bicycling

7. Economic Vitality

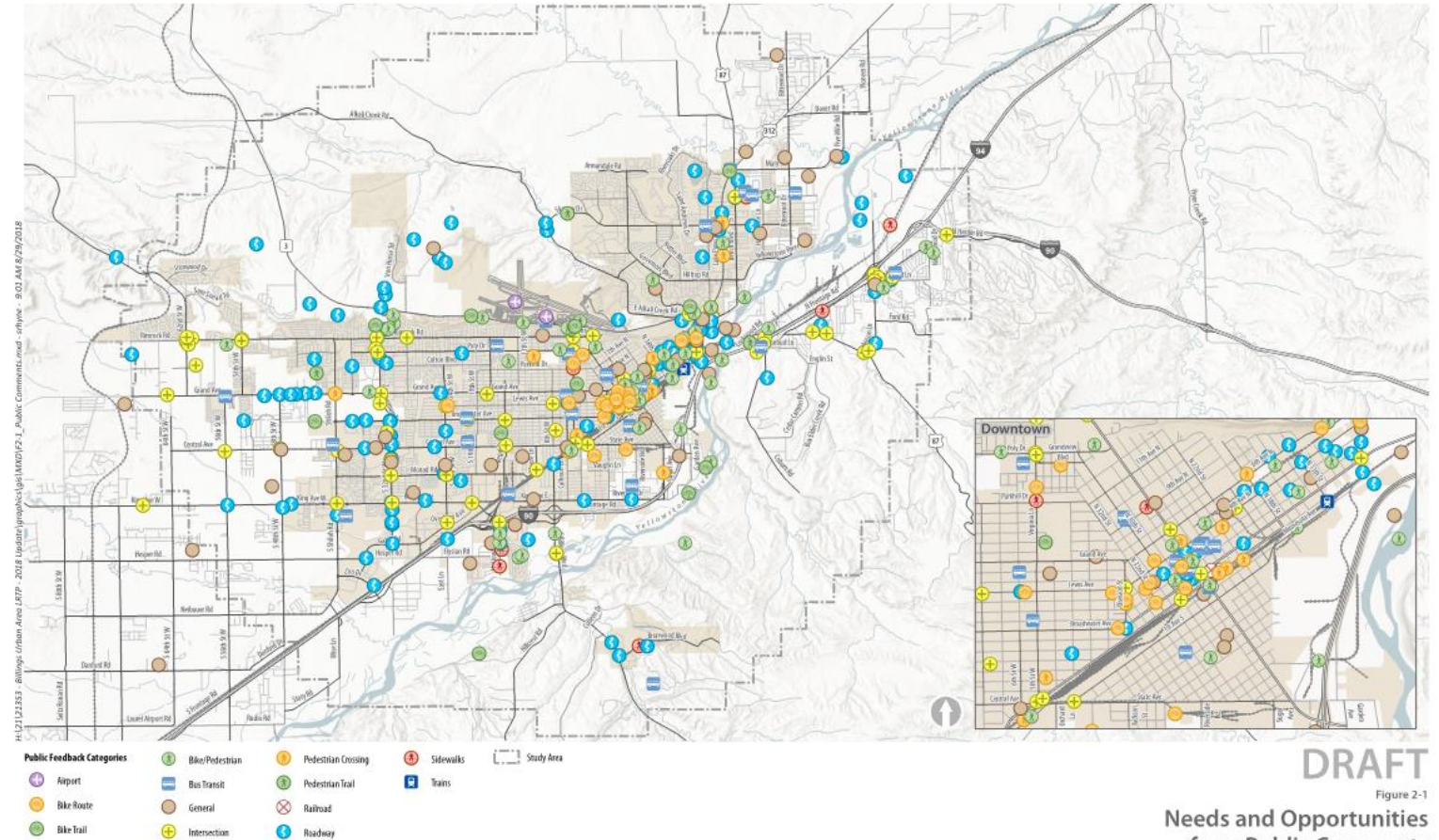
- Ensure adequate transportation facilities to support the existing local economy and connect Billings to local, regional, and national commerce

Public and Interagency Involvement

- ▶ Project team met with representatives from the following agencies and groups:
 - ▶ Billings Area Chamber of Commerce
 - ▶ Yellowstone County Fire and Emergency Services
 - ▶ Rimrock Task Force
 - ▶ West End Task Force (planned)
 - ▶ MET Transit
- ▶ Project team holds monthly meetings with Steering Committee - comprised of City, County, and MDT staff
- ▶ Held Open House #1, school outreach, and online survey in May 2018

Open House #1 Recap

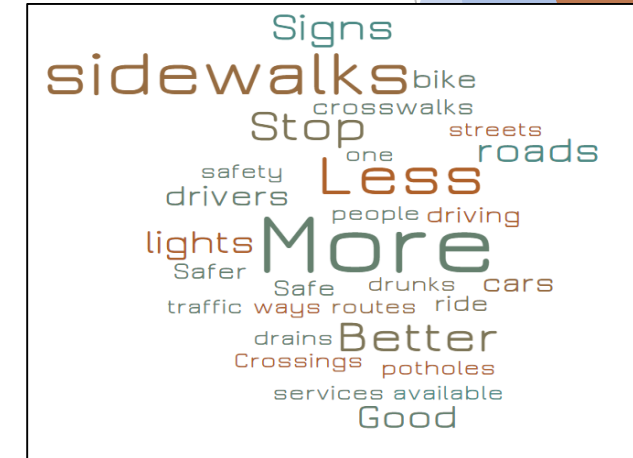
- ▶ Locations of Interest:
 - ▶ Map comments (32 comments)
 - ▶ Online survey (337 comments)
 - ▶ In-person discussion



DRAFT
Figure 2-1
Needs and Opportunities
from Public Comments

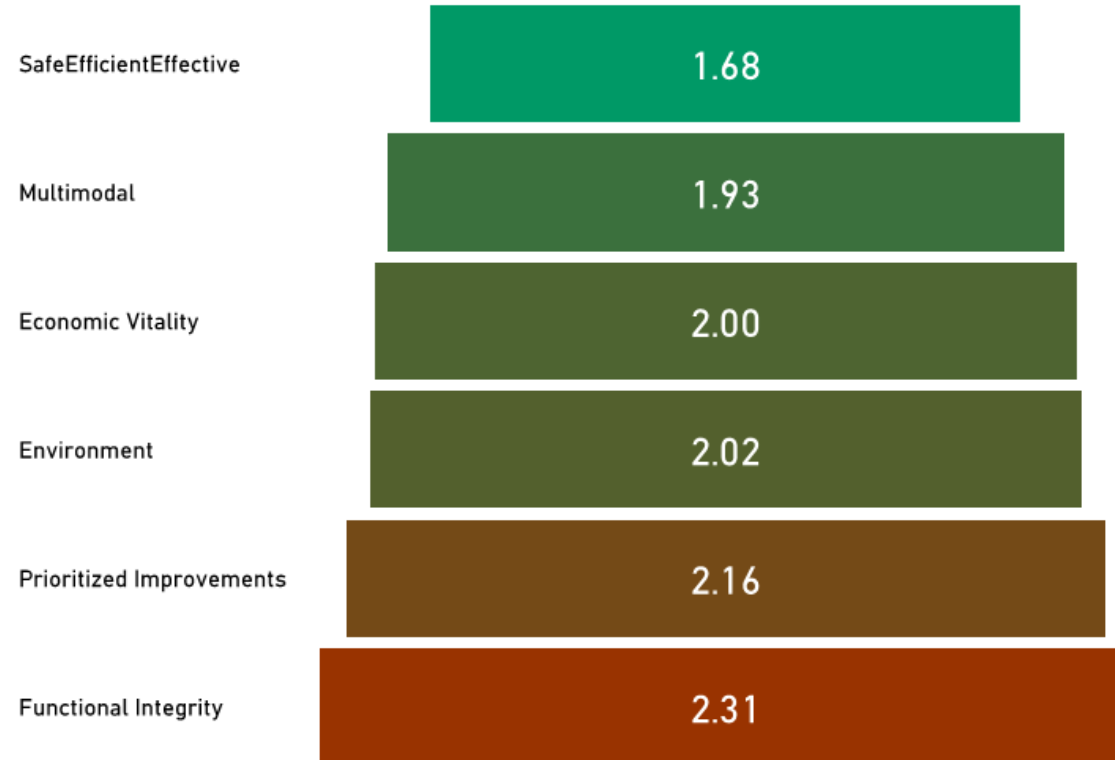
Open House #1 Recap

- ▶ Areas of Interest Include:
 - ▶ Add or upgrade pedestrian crossings
 - ▶ Add bicycle facilities on-street
 - ▶ Increase bus frequency
 - ▶ Enhance at-grade railroad crossings
 - ▶ Extend roadways
 - ▶ Add new roadway connection from Highway 3 to the Interstate
 - ▶ Enhance intersections



Open House #1 Recap

► Relative importance of goals:



Land Use - Population Growth

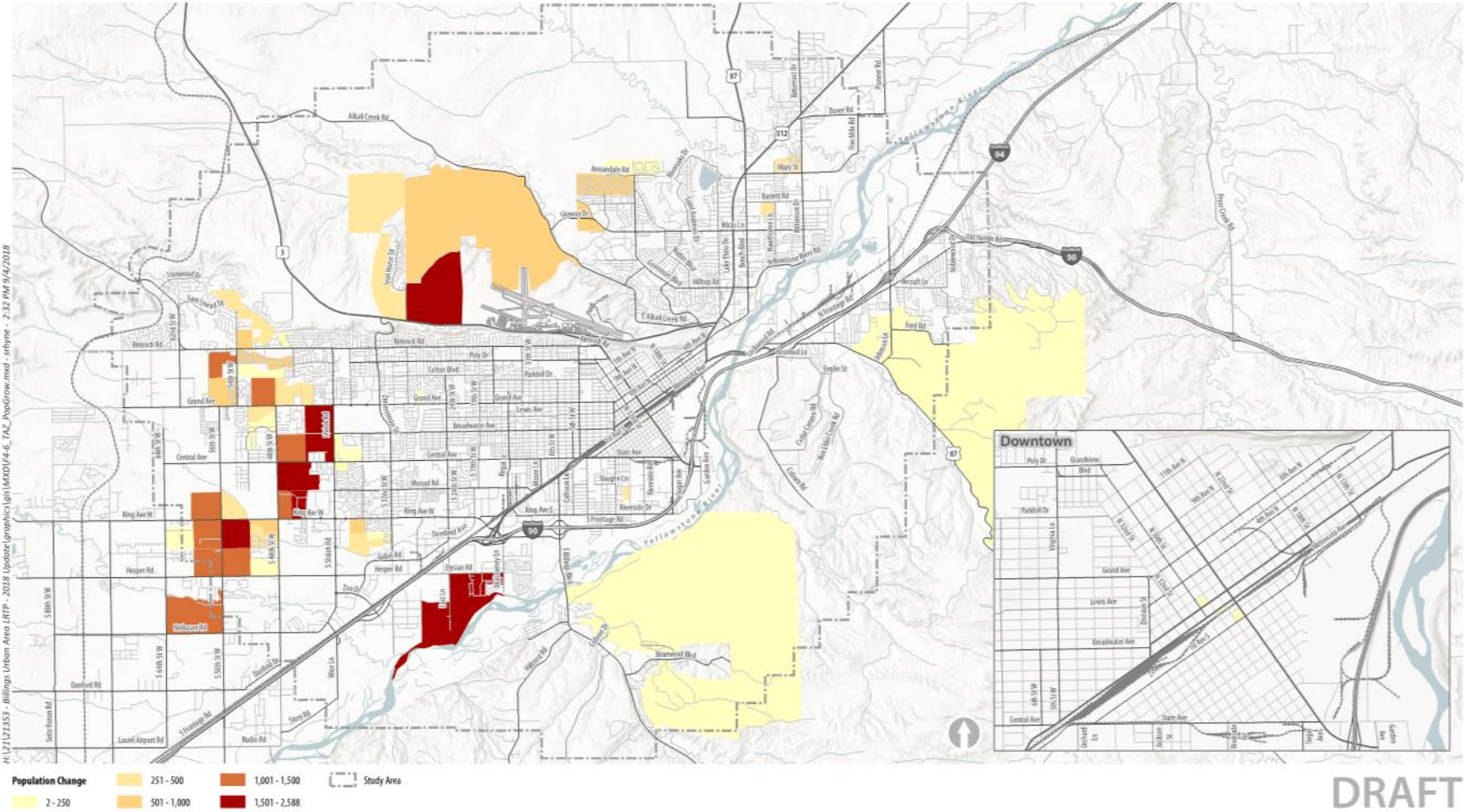
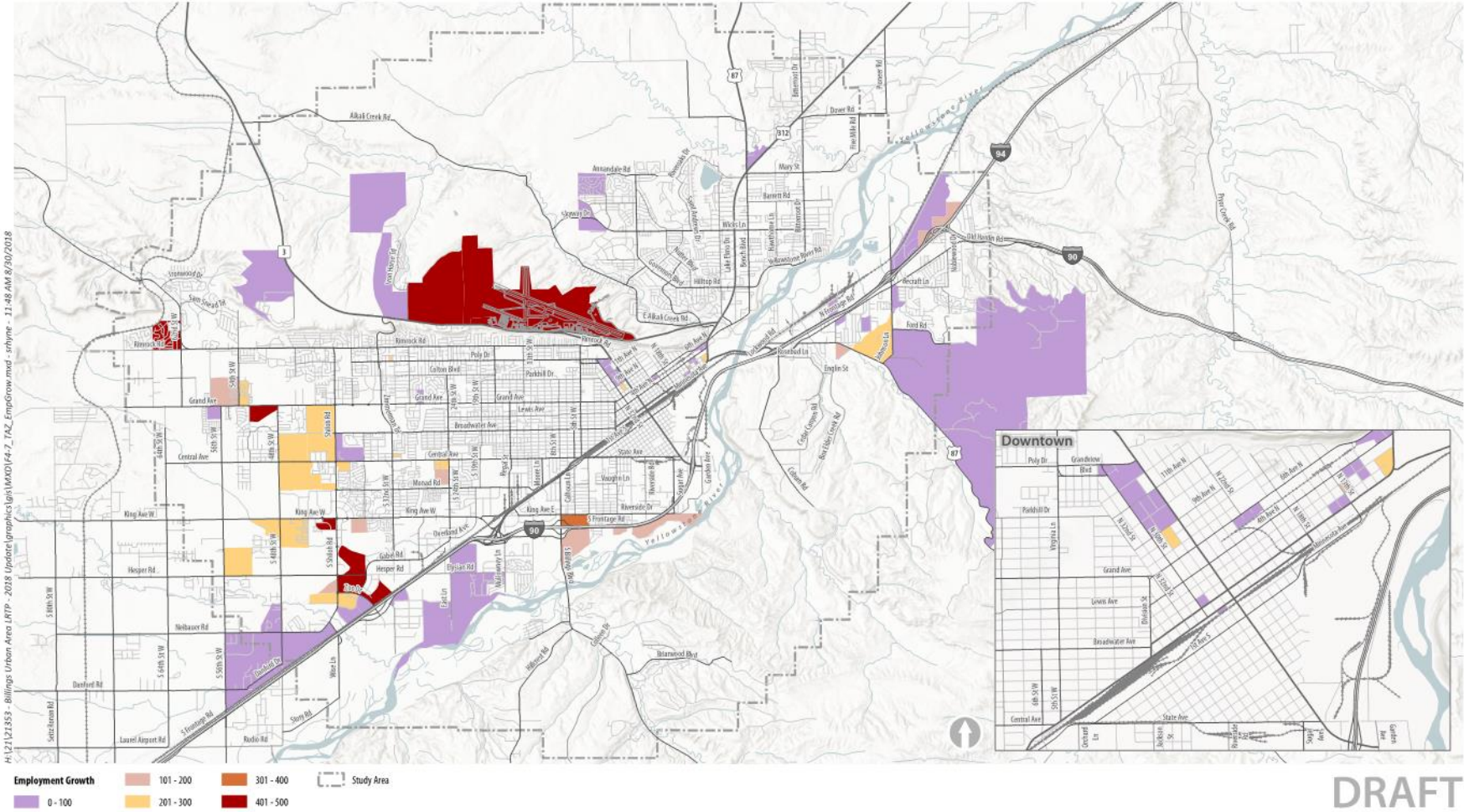


Figure 4-6
Population Growth (2017 to 2040)

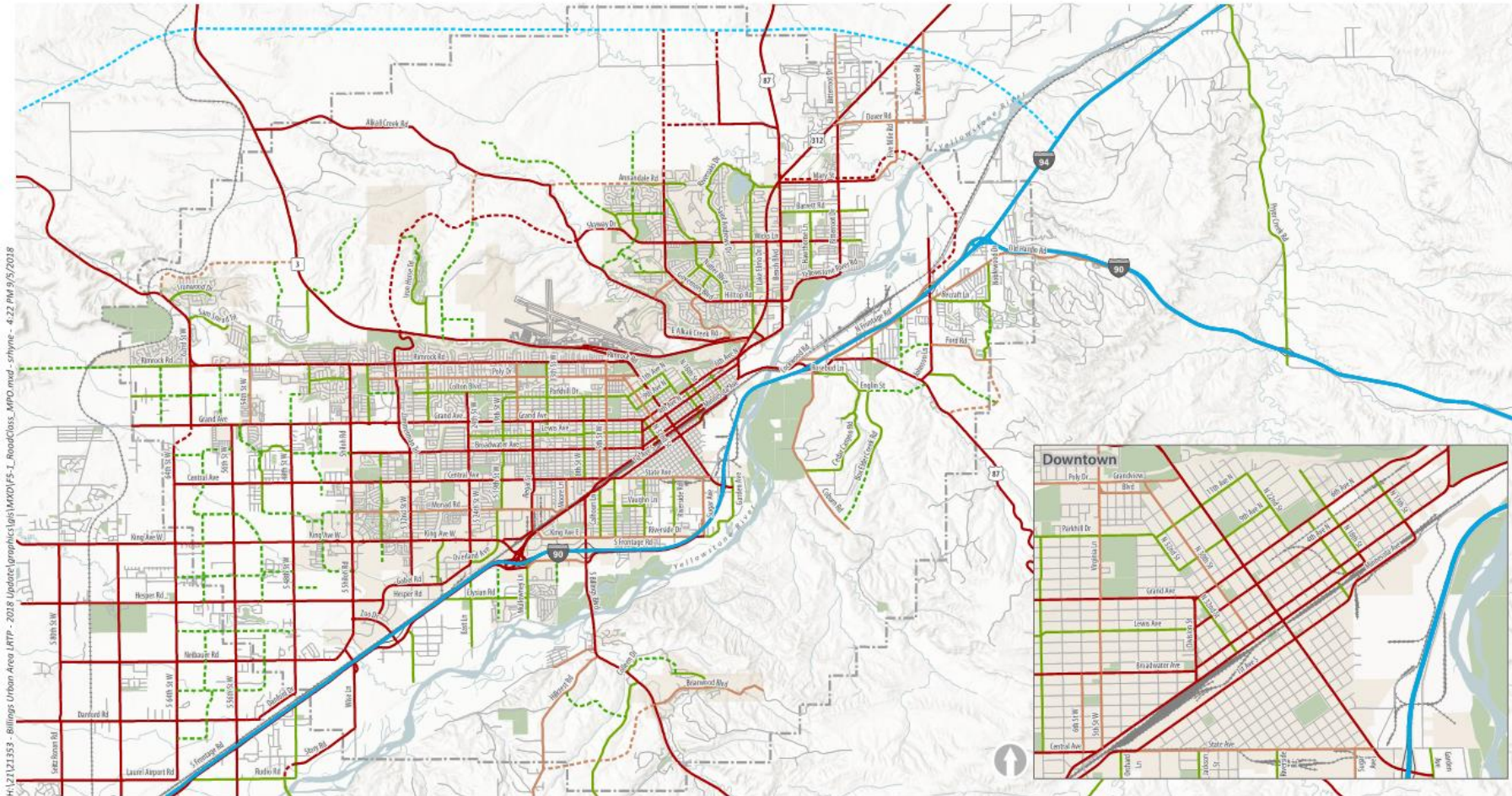
Land Use - Employment Growth



DRAFT

Figure 4-7
Employment Growth (2017 to 2040)

Traffic Analysis - Functional Classification Map



H:\12121353 - Billings Urban Area LRTP - 2018 Update\graphics\MXD\F5-1_RoadClass_MPD.mxd - slyne - 4:22 PM 9/5/2018

- Roadway Classification**
- Minor Arterial
 - Interstate
 - Principal Arterial
 - Collector
 - - - Proposed Freeway Controlled Access
 - - - Proposed Principal Arterial
 - - - Proposed Collector
 - Study Area
 - Park
 - City of Billings
 - Local Streets

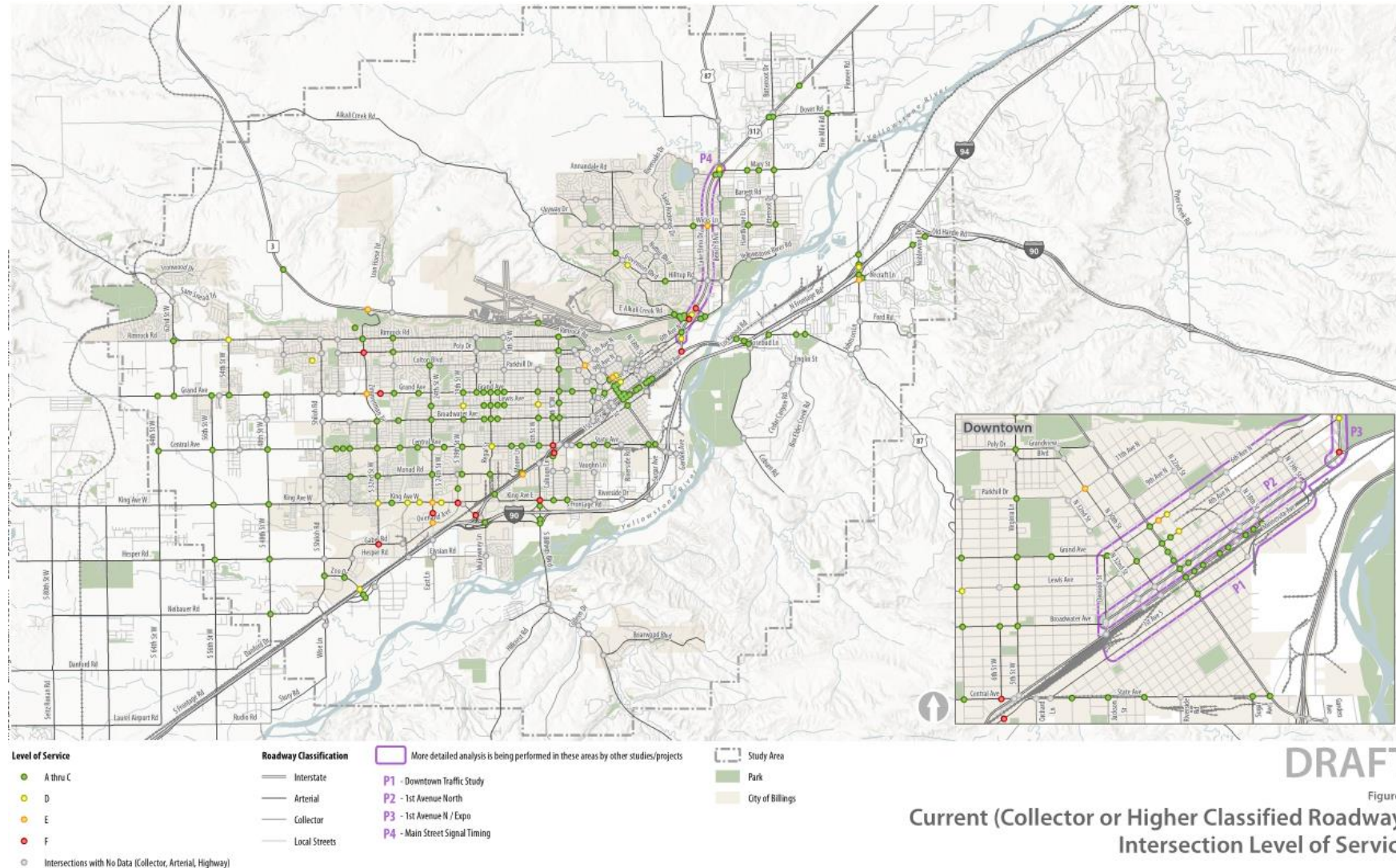
Note: This functional classification map does not represent the federally approved system.

DRAFT

Figure 5-1

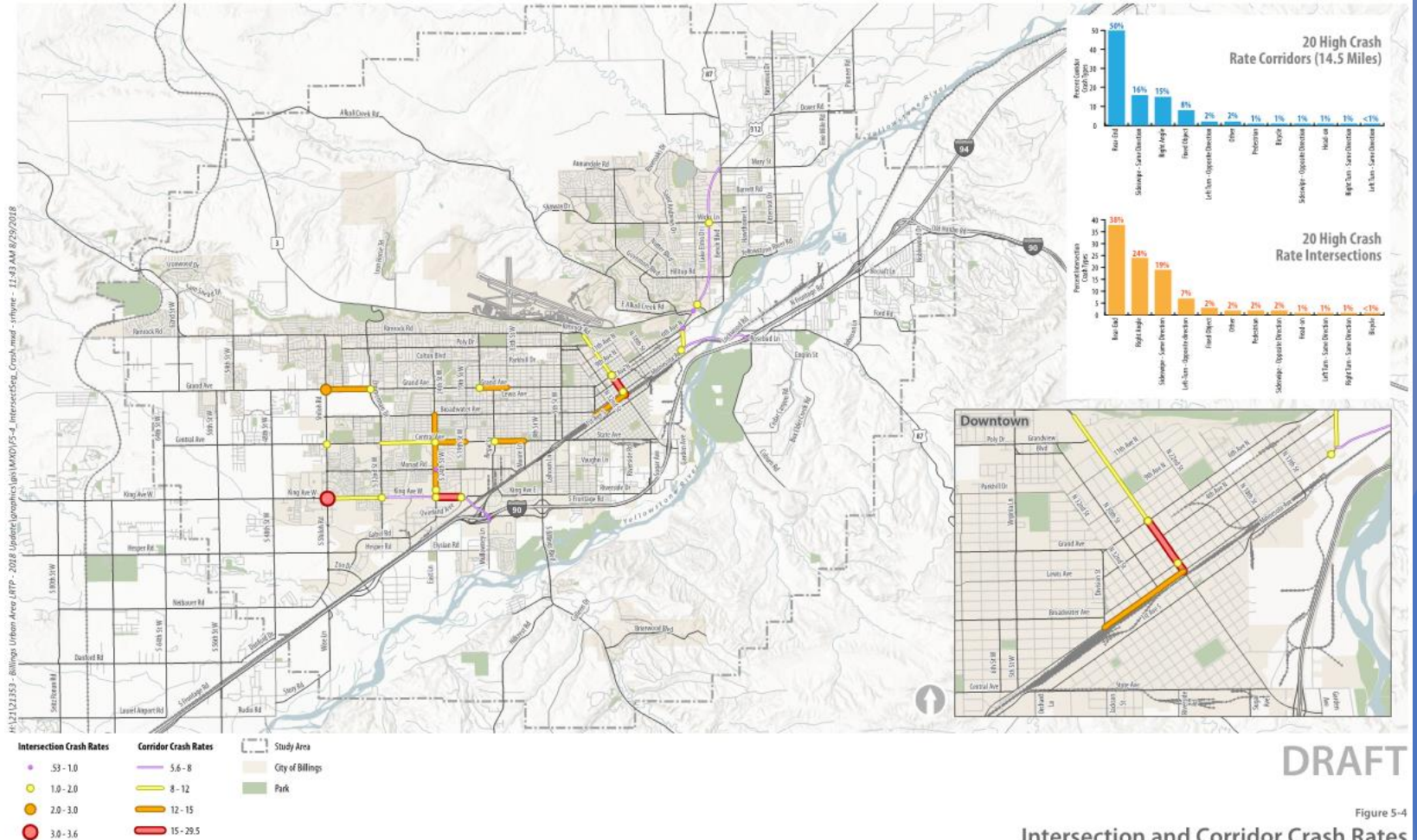
Functional Classification Map

Traffic Analysis - Existing Level of Service



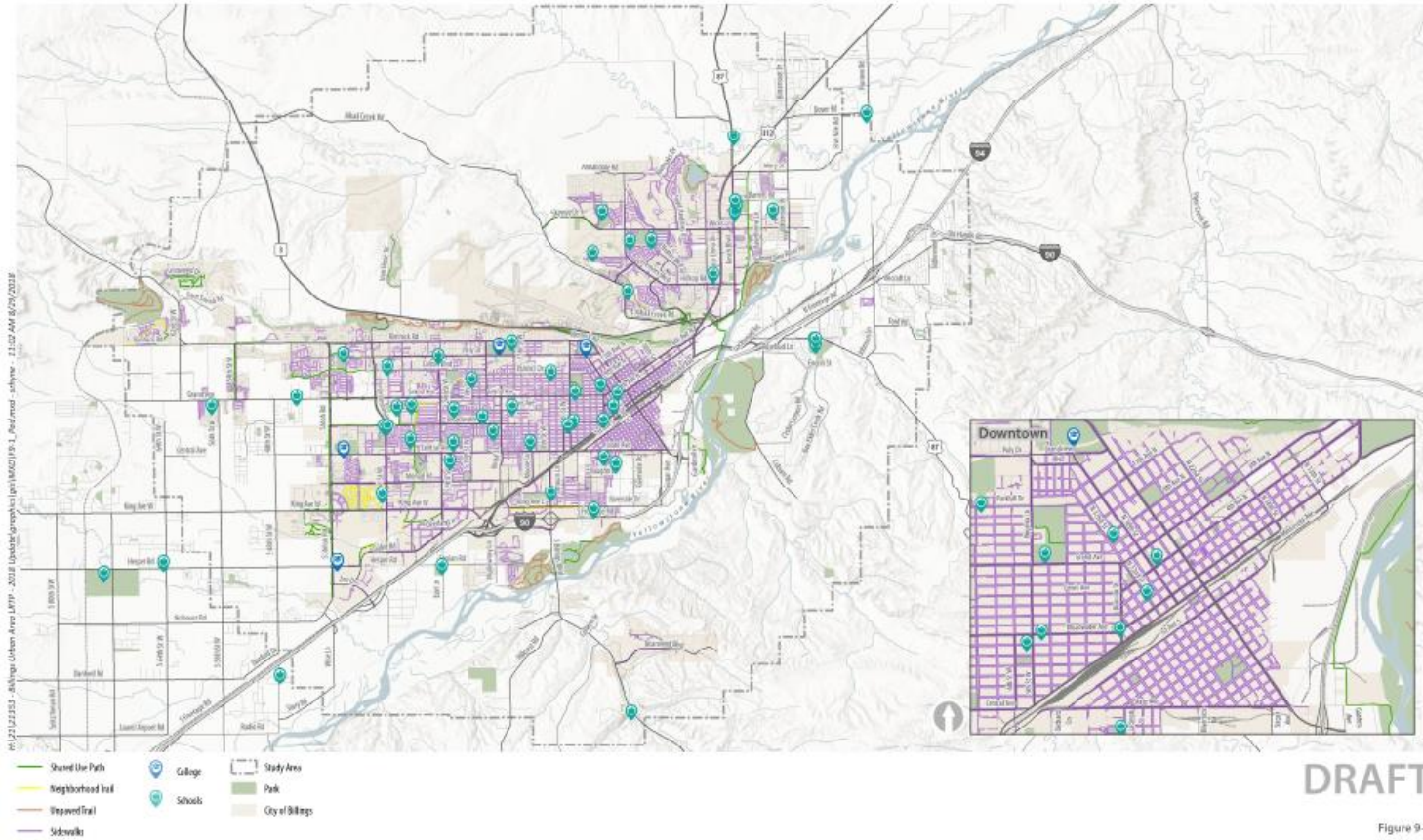
Safety Analysis

- ▶ 2013-2017 crash data
 - ▶ 14,577 reported crashes (about 8 crashes per day)
 - ▶ Identified high crash corridors:
 - ▶ N 27th Street
 - ▶ 24th Street West
 - ▶ King Avenue West
 - ▶ Montana Avenue
 - ▶ Central Avenue
 - ▶ Grand Avenue

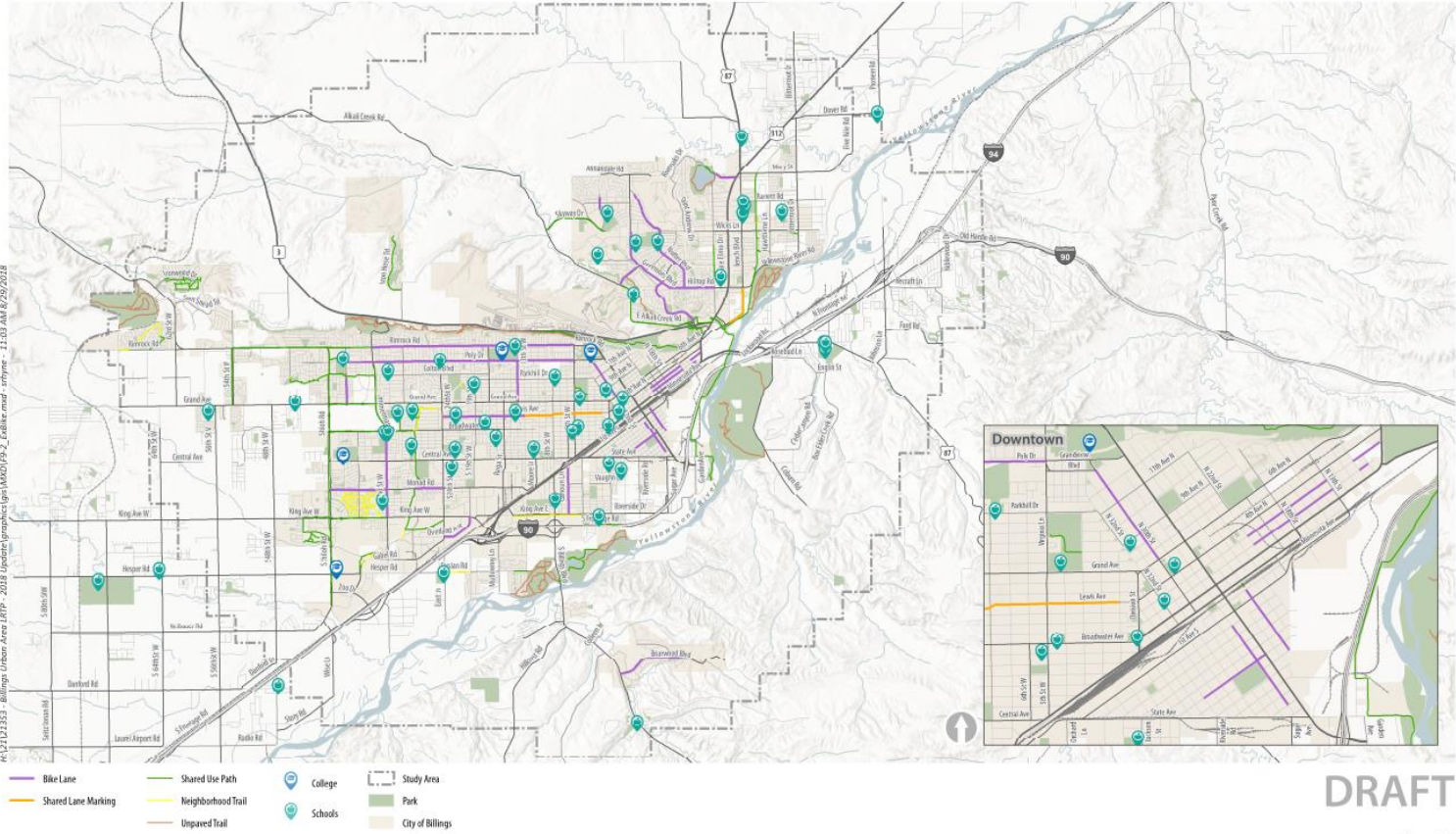


DRAFT
 Figure 5-4
 Intersection and Corridor Crash Rates

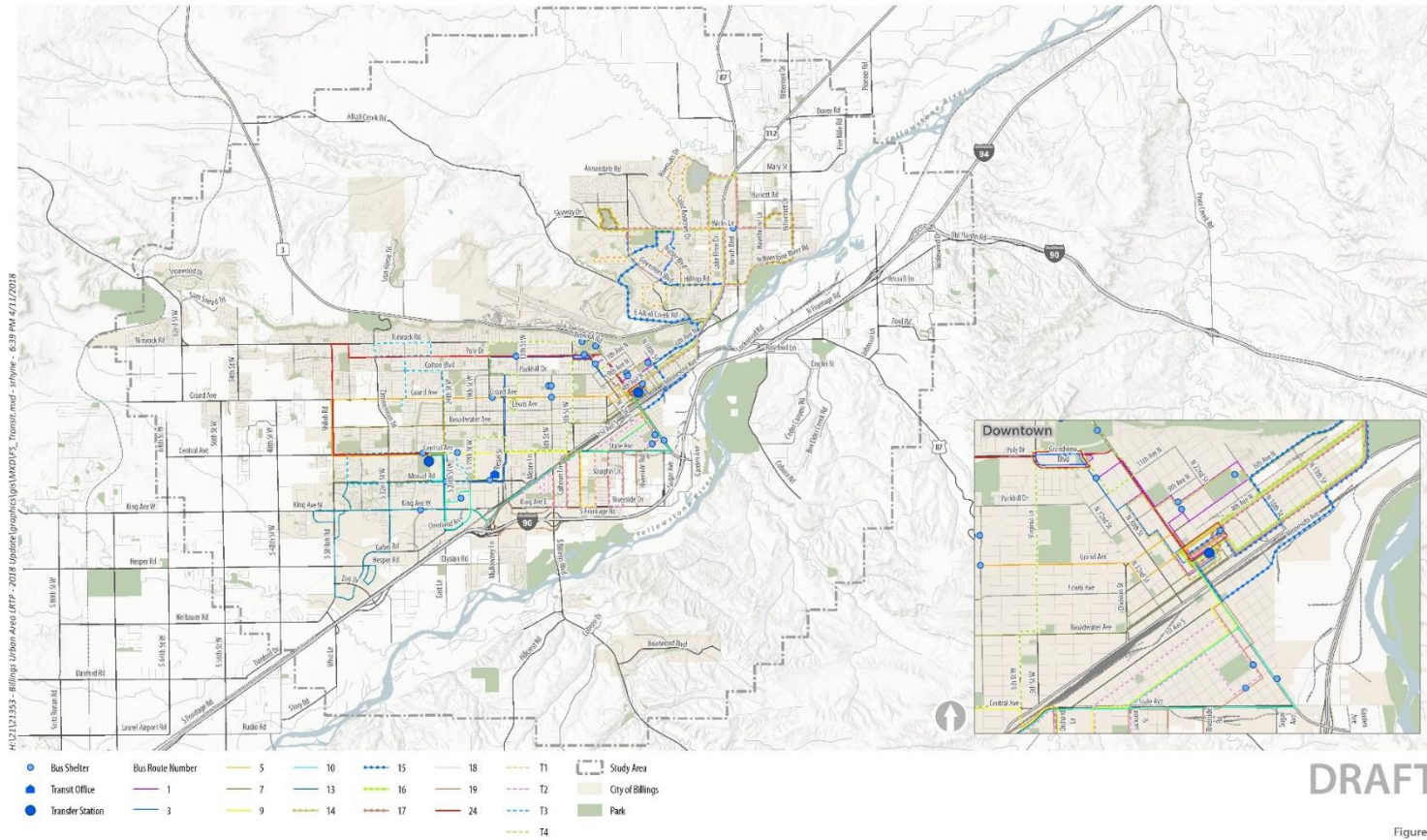
Pedestrian System



Bicycle System



Transit System

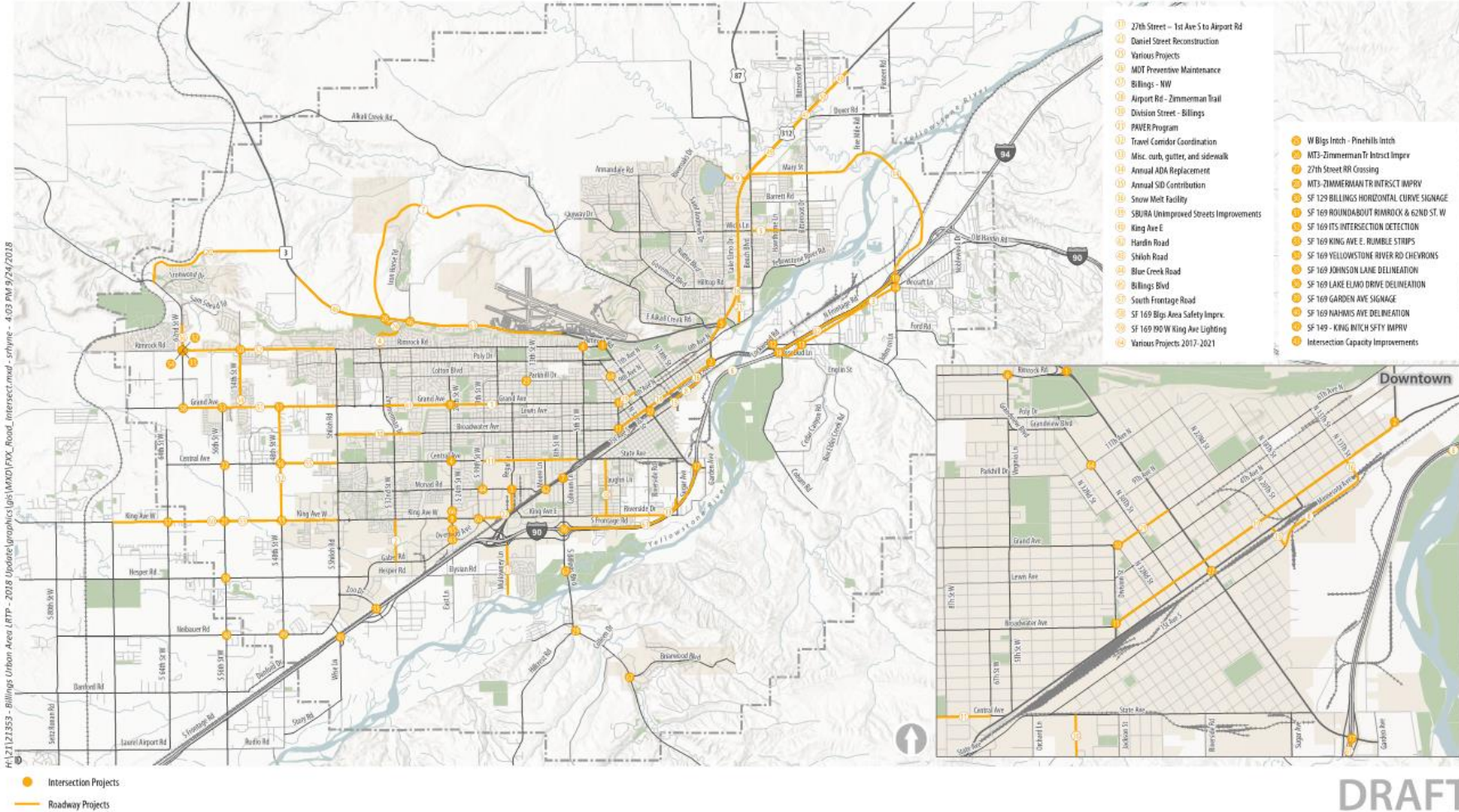


DRAFT

Figure 5
Existing Weekday Bus Routes



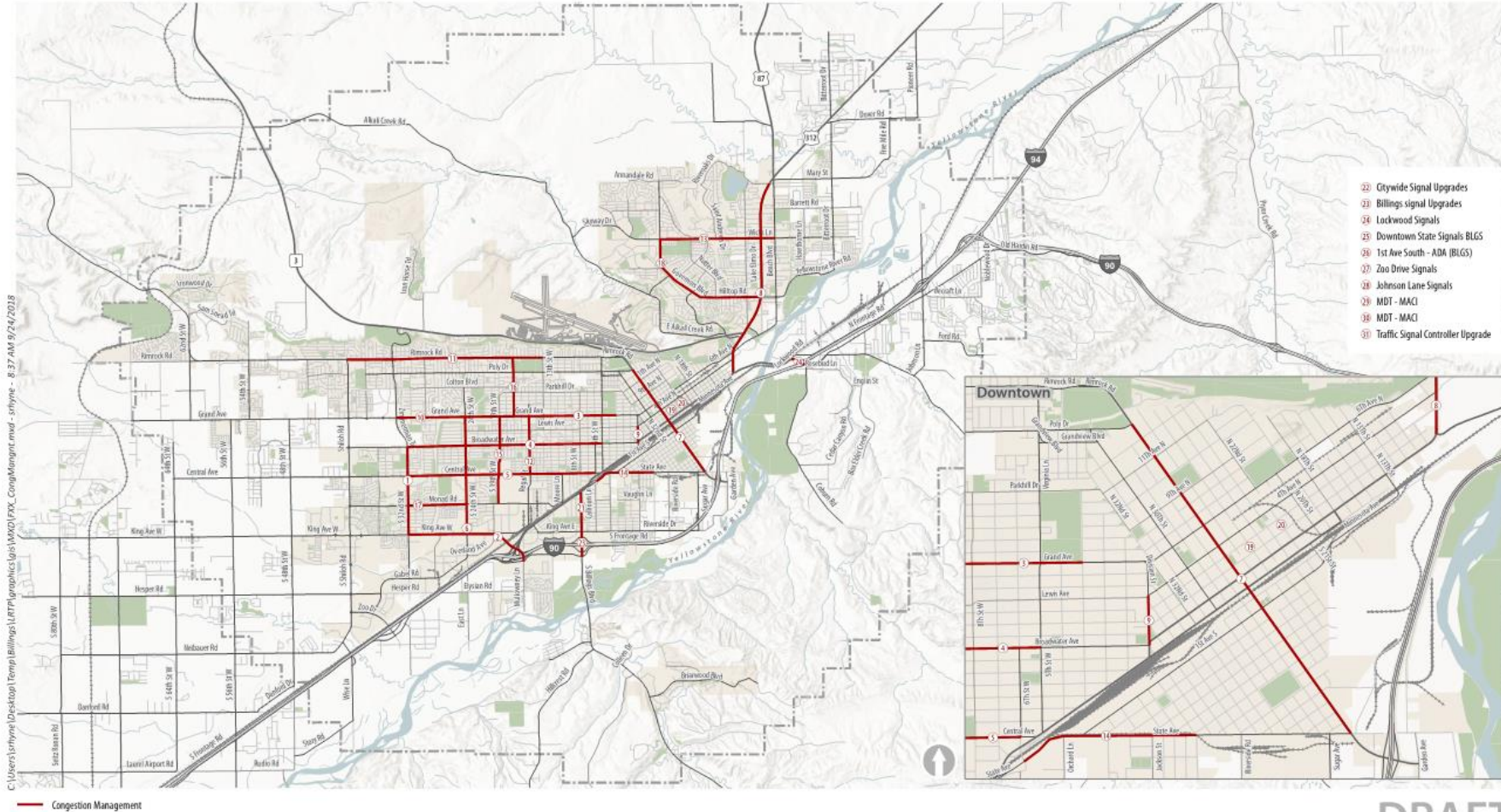
Draft Project List - Roadway and Intersection Projects



DRAFT

Figure XX
Intersection and Roadway Projects

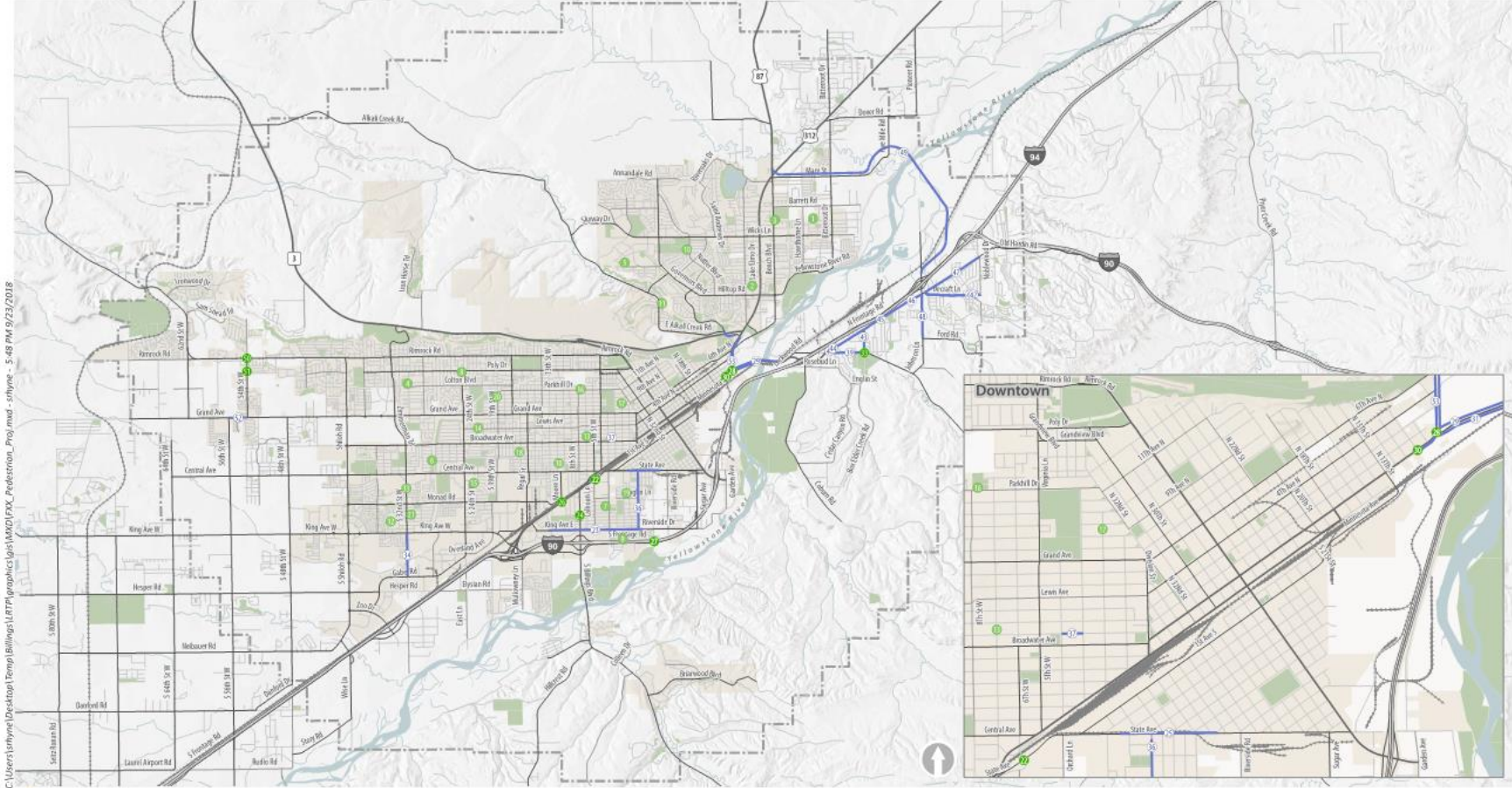
Draft Project List - Congestion Management Projects



DRAFT

Figure XX
Congestion Management Projects

Draft Project List - Pedestrian Projects



C:\Users\shayne\Desktop\Temp\Billings\UTP\graphics\Map\Map01_Pedestrian_Proj.mxd - s:\p\m\9/23/2018

- Pedestrian Crossing
- Safe Routes to Schools
- Pedestrian Projects

DRAFT

Figure XX
Pedestrian Projects

Draft Project List - Bicycle Lane Projects

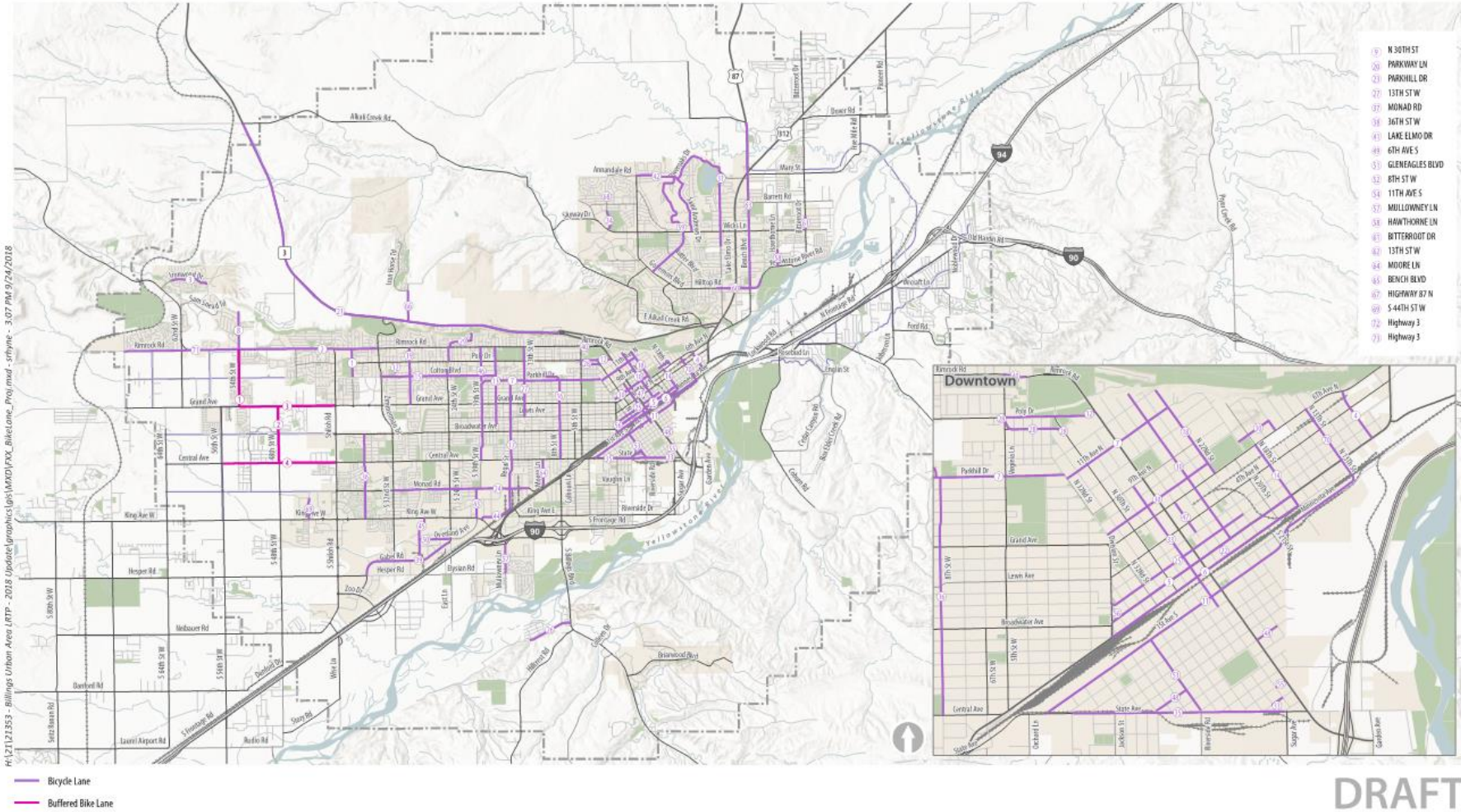


Figure XX
Bicycle Lane and Buffered Bike Projects

Draft Project List - Bicycle Boulevard Projects

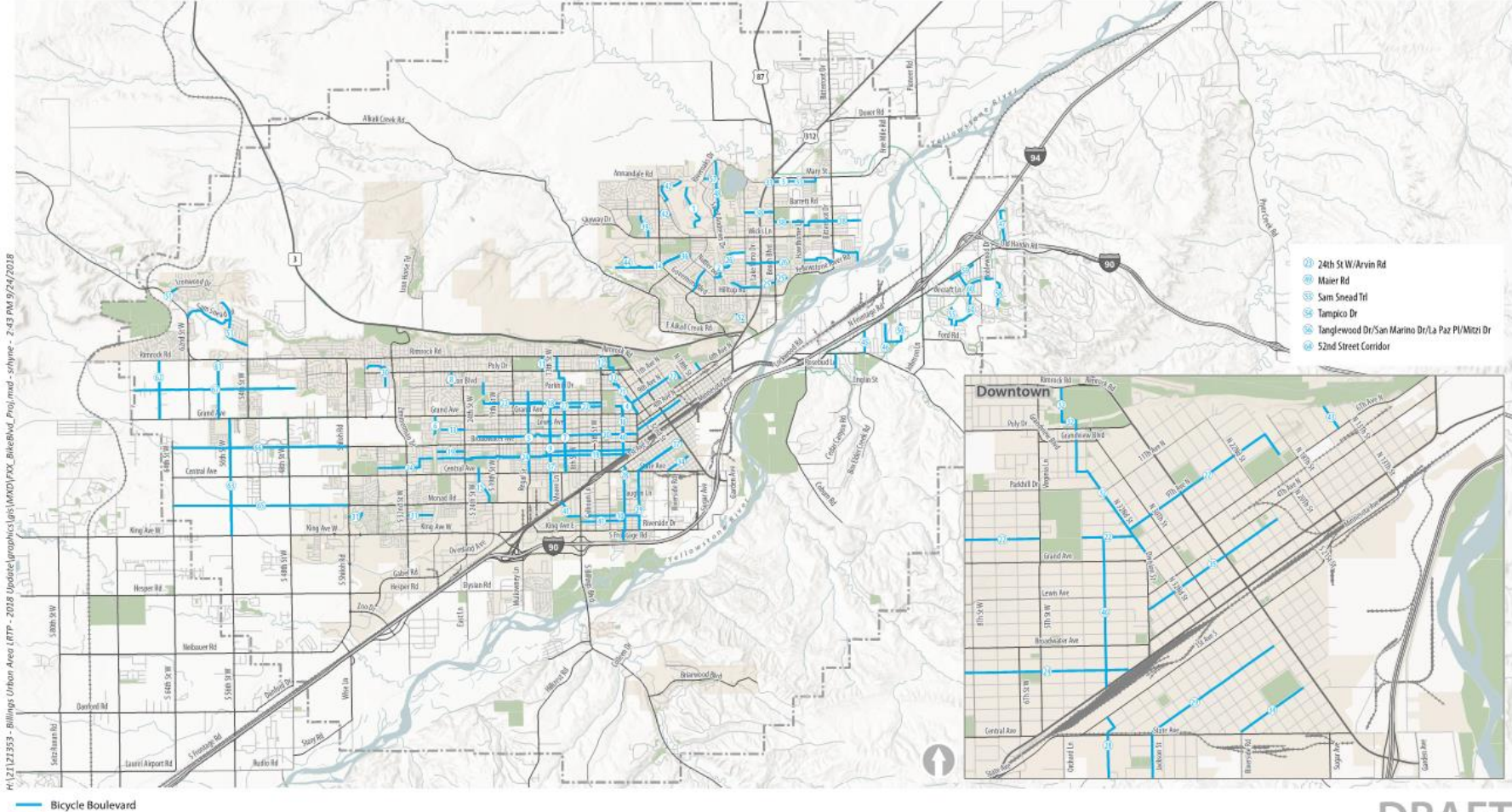


Figure XX

Bicycle Boulevard Projects

Draft Project List - Multi-use Trail Projects

Project ID	Proposed Name	Length (Miles)	Project Description	Estimated Planning-Level Cost	Cost Reference ¹
MT1	Audubon Conservation Education Center Connector Trail	0.5	Construct a multi-use trail from ACEC Trails to Mullaney Lane	\$274,017	Engineer's Estimate from Consultant Team
MT2	Audubon Conservation Education Center Trail	0.5	Construct a multi-use trail from Riverfront Park to Josephine Crossing	\$456,695	Engineer's Estimate from Consultant Team
MT3	Alkali Creek Trail	0.5	Extend trail from Swords Park northeast along Alkali Creek or Swords Lane to Main Street Pedestrian Underpass	\$250,000	City of Billings Capital Improvements Project, FY 2015 - FY 2019 (8-11) use trail from S 44th St W to Hogans Slough
MT4	Arnold Drain Trail	0.5	Construct a multi-use trail from Arnold Drain Connector to Grand Ave	\$456,695	Engineer's Estimate from Consultant Team use trail from Interstate-90 to Shiloh Rd
MT5	Arnold Drain/Shiloh Road Connector Trail	1	Construct a multi-use trail from Broadwater Ave to Shiloh Rd	\$913,390	Engineer's Estimate from Consultant Team use trail from S 45th St W to Hogans Slough
MT6	BNSF Rail with Trail	15	Construct a multi-use trail from MRL Rail with Trail to Highway 3	\$8,220,506	Engineer's Estimate from Consultant Team use trail from BBWA Canal Trail to 48th St W
MT7	Briarwood to Blue Creek School	1.5	Construct a multi-use trail from Briarwood Blvd to Blue Creek School	\$1,370,084	Engineer's Estimate from Consultant Team use trail from Interstate-90 to Highway 312
MT8	Briarwood to Pictograph Caves	2.5	Construct a multi-use trail from Briarwood Blvd to Pictograph Caves State Park	\$1,370,084	Engineer's Estimate from Consultant Team use trail from Extension of Existing Trail to Inner Belt Loop
MT9	Canyon Creek	6	Construct a multi-use trail from Zoo Montana to BNSF Rail with Trail	\$3,288,202	Engineer's Estimate from Consultant Team use trail from 54th St W to Cove Ditch
MT10	Castle Rock	1	Construct a multi-use trail from Governors Blvd to BBWA Canal	\$913,390	Engineer's Estimate from Consultant Team use trail from Aronson Ave to Inner Belt Loop Trail
MT11	Colton Connector	1	Construct a multi-use trail from 32nd St W to 38 St W	\$913,390	Engineer's Estimate from Consultant Team use trail from Shiloh Rd to Big Ditch
MT12	Cove Ditch	2	Construct a multi-use trail from Molt Rd to Hogans Slough	\$1,096,067	Engineer's Estimate from Consultant Team use trail from Suburban Ditch to MRL Rail with Trail
MT13	Downtown - Coulson Park Trail Connection	1	Extend trail from South 25th Street to 8th Ave. South to South 26th Street to Lillian Avenue and Coulson Park Trail	\$1,000,000	City of Billings Capital Improvements Project, FY 2015 - FY 2019 (8-11) use trail from 24th St W to 15th St W
MT14	Four Dances Connector	1	Construct a multi-use trail from Lockwood Trail to Four Dances Natural Area	\$548,034	Engineer's Estimate from Consultant Team segment up to standards and complete connection to TransTech Center Trail
MT15	Heights BBWA	3	Construct a multi-use trail from Aronson Ave to Lake Elmo State Park	\$2,740,169	Engineer's Estimate from Consultant Team use trail from Kiwanna Trail to Five Mile Creek
MT16	Heights Upper Loop	4.5	Construct a multi-use trail from Yellowstone River to Alkali Creek Rd	\$4,110,253	Engineer's Estimate from Consultant Team use trail from Josephine Crossing Trail to Shiloh Rd Trail
MT17	High Ditch	4	Construct a multi-use trail from Rimrock West Trail to Hogans Slough	\$2,192,135	Engineer's Estimate from Consultant Team use trail from Mystic Park Trails to Riverfront Park Trails
MT18	Hogans Slough	5.5	Construct a multi-use trail from Shiloh Rd to BNSF Rail with Trail	\$3,014,186	Engineer's Estimate from Consultant Team use trail from Highway 3 to Poly Dr
MT19	Inner Belt Loop	6.5	Construct a multi-use trail from Governors Blvd to Highway 3	\$5,937,032	Engineer's Estimate from Consultant Team use trail from Montana Avenue to Minnesota Avenue
MT20	Bridge BBWA to Swords Park Trail	0.5	Construct a multi-use trail from Montana Avenue to Minnesota Avenue	\$1,700,000	Engineer's Estimate from Consultant Team
MT37	Bridge BBWA to Swords Park Trail	5.5	Construct a multi-use trail from Lillis Park to Aronson Ave	\$5,023,643	Engineer's Estimate from Consultant Team
MT38	Rim Top Trail from 27th Street West/Airport Road to Zim, merman Trail Vicinity	3.5	New Trail along the Rims resulting from Highway 3 corridor study	\$1,200,000	City of Billings Capital Improvements Project, FY 2015 - FY 2019 (8-11)
MT39	Downtown BBWA Corridor Trail/On Street Facilities	1.5	Complete Trail through MSU-B Campus in alignment with MSU-B Master Plan and trail/on-street facilities along Poly Dr. through Virginia Lane intersection to 13th/Poly Drive	\$210,000	City of Billings Capital Improvements Project, FY 2015 - FY 2019 (8-11)
MT40	34th Street Pedestrian Bridge	0.25	Construct a multi-use bridge to cross the tracks near 34th Street	\$2,000,000	City of Billings CTEP List

Draft Projects and Strategies - Other Modes

Transit

- Increase funding through federal or local sources
- Improve equipment and facilities
- Service to Billings Heights by 2020
- Vehicle tracking and automatic fare collection by 2025
- Designated fixed-route bus stops by 2025

Truck

- Various highway projects:
 - *Billings Bypass*
 - *I-90 Yellowstone River Bridge*
 - *Inner Belt Loop*
- Widening and reconstructions throughout the Billings urban area

Rail

- Crossing studies at 27th Street and Moore Lane
- Improve underpasses at 21st Street and 13th Street
- Coordinate rail infrastructure improvements with Lockwood

Today's Goals

- ▶ View display boards and chat with us about any information or viewpoints on the transportation system you'd like to discuss
- ▶ Provide project list feedback
 - ▶ Sort projects by mode or area of town; you don't need to examine every project

Project Team Next Steps

- ▶ Review and address comments received from the public on the Draft LRTP
- ▶ Finalize the LRTP for plan adoption
- ▶ Coordinate plan adoption process
 - ▶ October 30, 2018 - Policy Coordinating Committee

How to stay involved

Contact Scott Walker with any remaining questions:

Walkers@ci.billings.mt.us

Sign up for the “Notify Me” list on Billings’ website:

Google “Billings Notify Me”

Visit the project website:

BillingsLRTP.com

Thank You For Your Time

- ▶ Please review the boards around the room and provide project list feedback