

WELCOME!

Thank you for attending tonight's open house for the Billings Urban Area Long Range Transportation Plan. The purpose of this open house is to give you an opportunity to learn about the draft plan, review technical information, and provide feedback on proposed projects in the following areas:

- Streets and Highways
- Pedestrians and Bicyclists
- Transit, Rail, and Truck

Who Is Involved?



The primary sounding board is the Steering Committee (SC), which includes representatives from the above agencies. Public involvement is a major contributor to the plan development.

The consultant team for the project includes Kittelson & Associates, Inc. and DOWL.

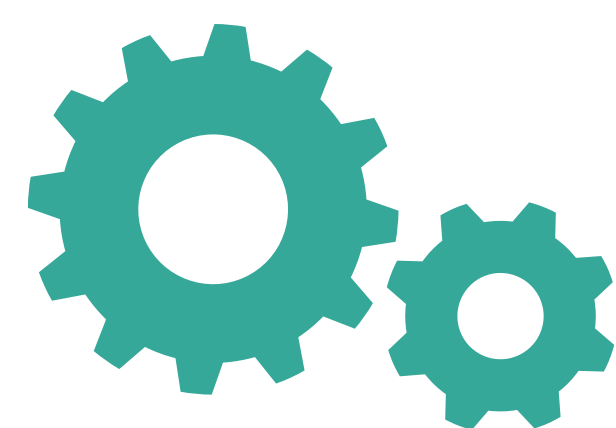


2018 LRTP GOALS



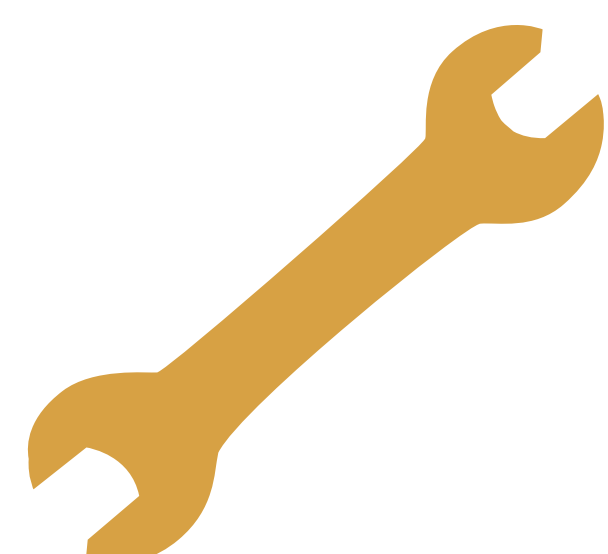
Safety

Develop a safe transportation system



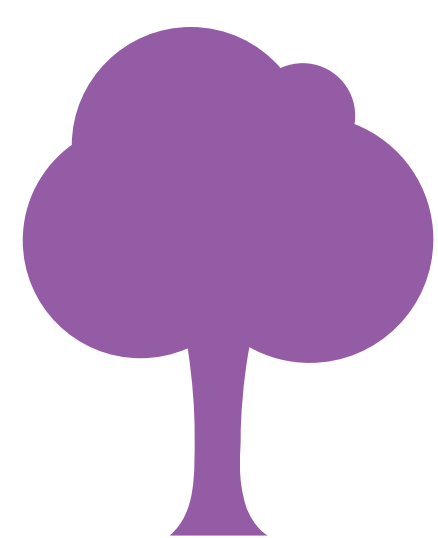
Functional Integrity and Efficiency

Optimize, preserve, and enhance the existing transportation system



Prioritized Improvements

Identify and prioritize projects that mitigate deficiencies, maximize the use of existing facilities, and balance anticipated needs with available funding



Environment

Develop a transportation system that protects the natural environment and promotes a healthy, sustainable community



Public Transit and Transportation

Create a transportation system that supports the practical and efficient use of transit



Pedestrians and Bicyclists

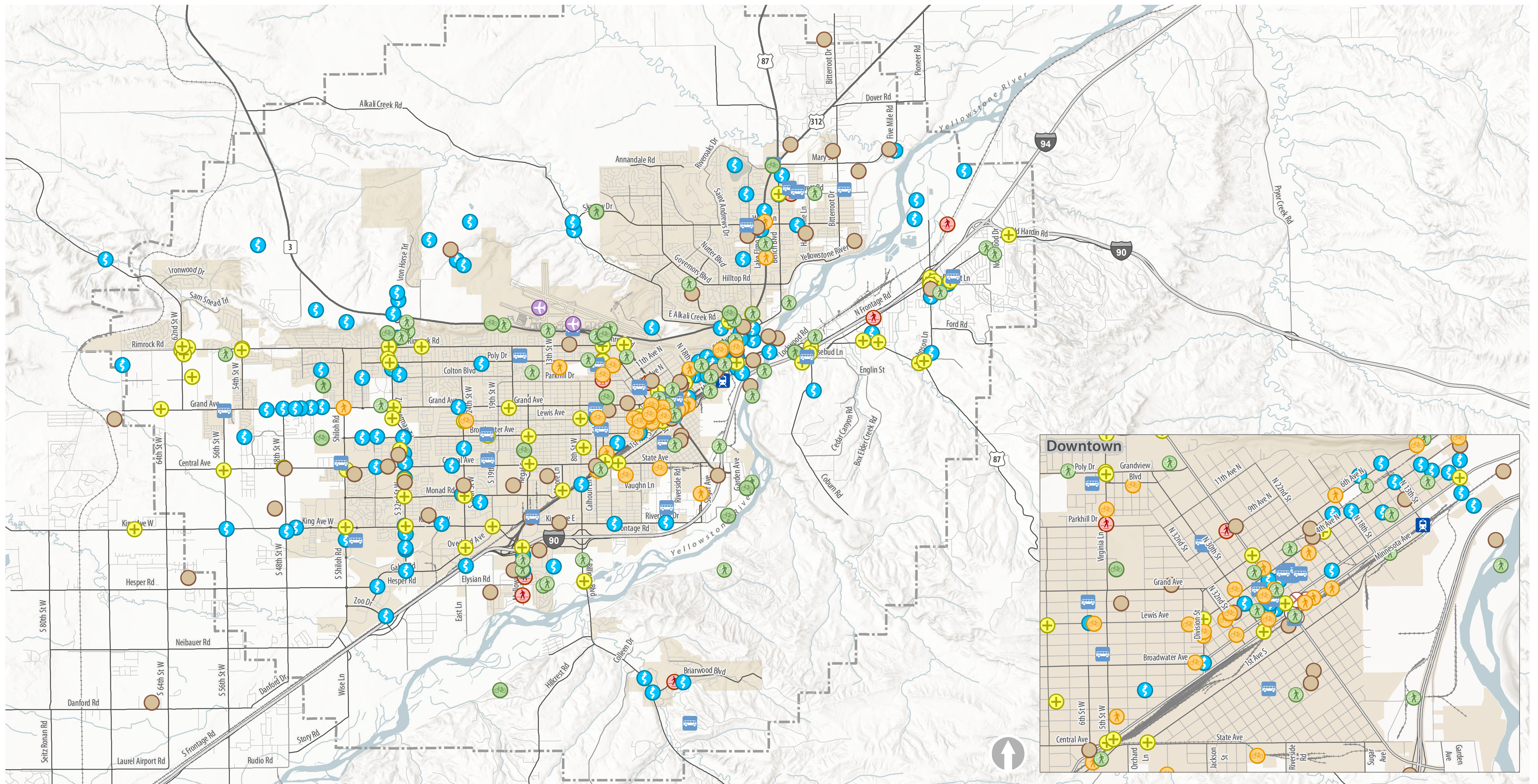
Create a transportation system that supports the practical and efficient use of active transportation such as walking and bicycling



Economic Vitality

Ensure adequate transportation facilities to support the existing local economy and connect Billings to local, regional, and national commerce

NEEDS AND OPPORTUNITIES FROM PUBLIC COMMENTS



Public Feedback Categories

- Airport
- Bike Route
- Bike Trail
- Bike/Pedestrian
- Bus Transit
- General
- Intersection
- Pedestrian Crossing
- Pedestrian Trail
- Railroad
- Roadway
- Sidewalks
- Trains
- Study Area

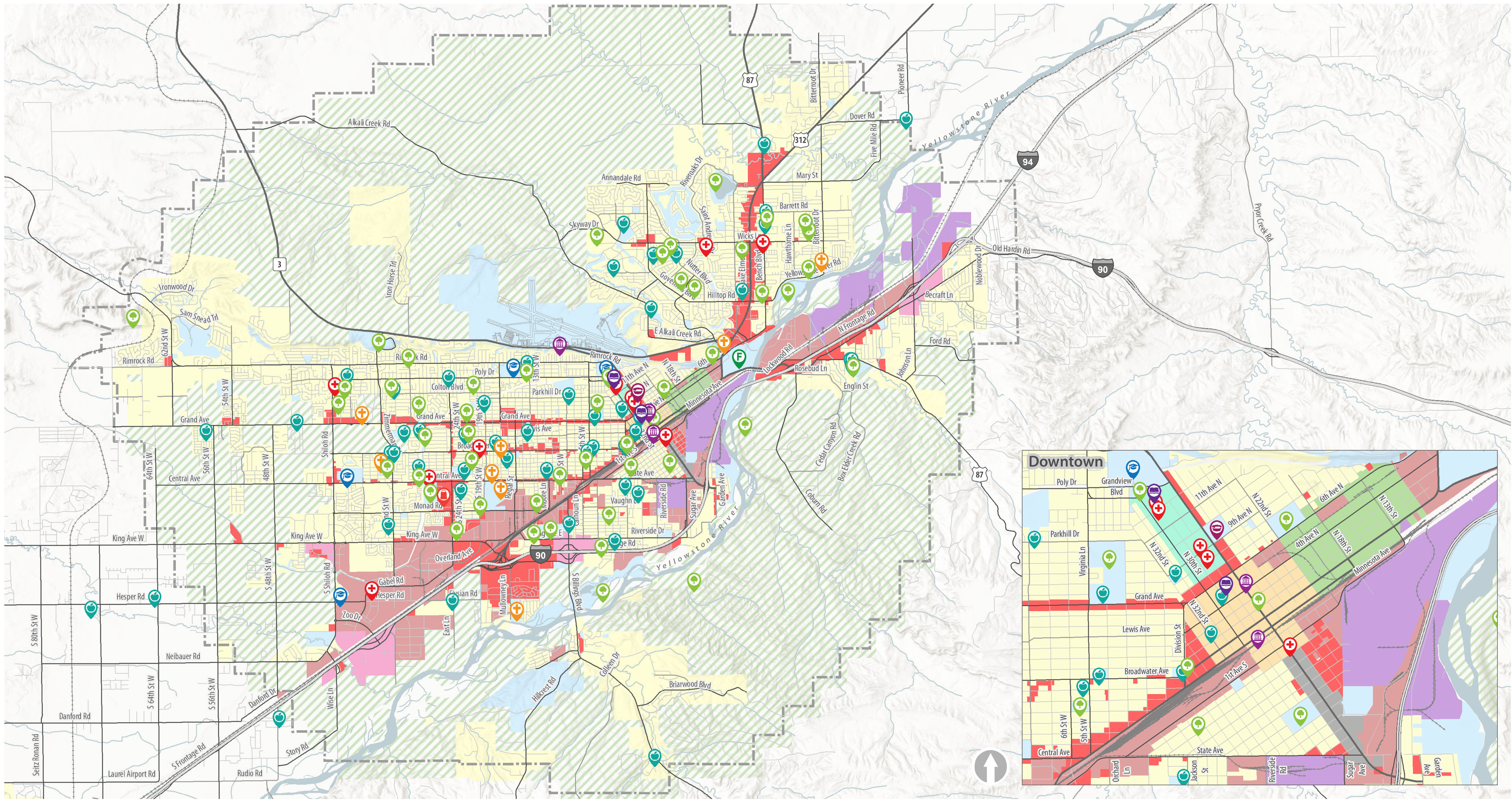
369 total comments
 112 on Roadways
 68 on Intersections

50 on Bicycle/
 Pedestrian
 28 on Bicycles

25 on Pedestrians
 2 on the Airport
 33 on Transit

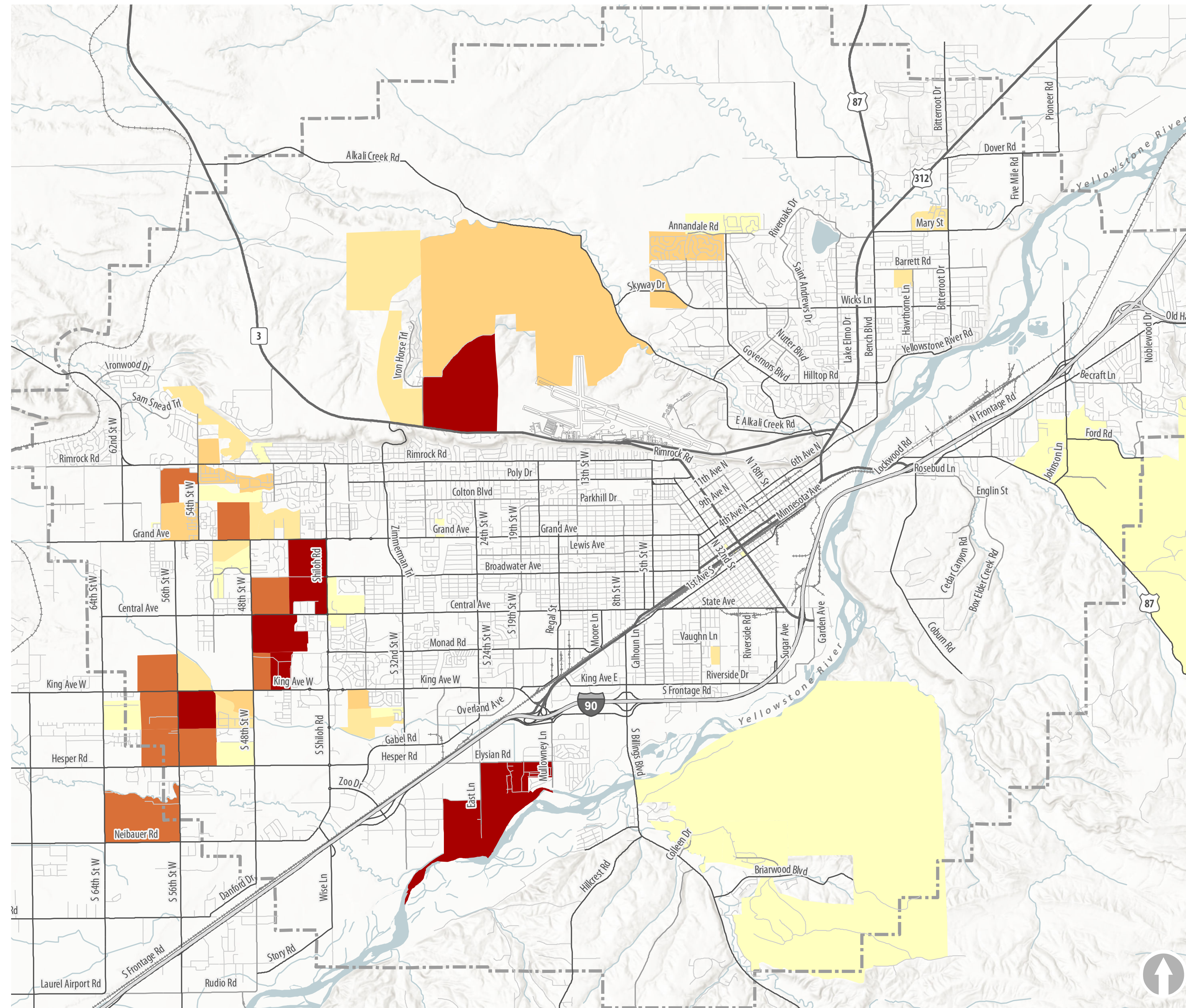
5 on Rail
 46 on General

EXISTING LAND USE



- | | | | | | | | | | |
|--|--|--|--|--|--|--|--|--|--|
| | | | | | | | | | |
| | | | | | | | | | |
| | | | | | | | | | |

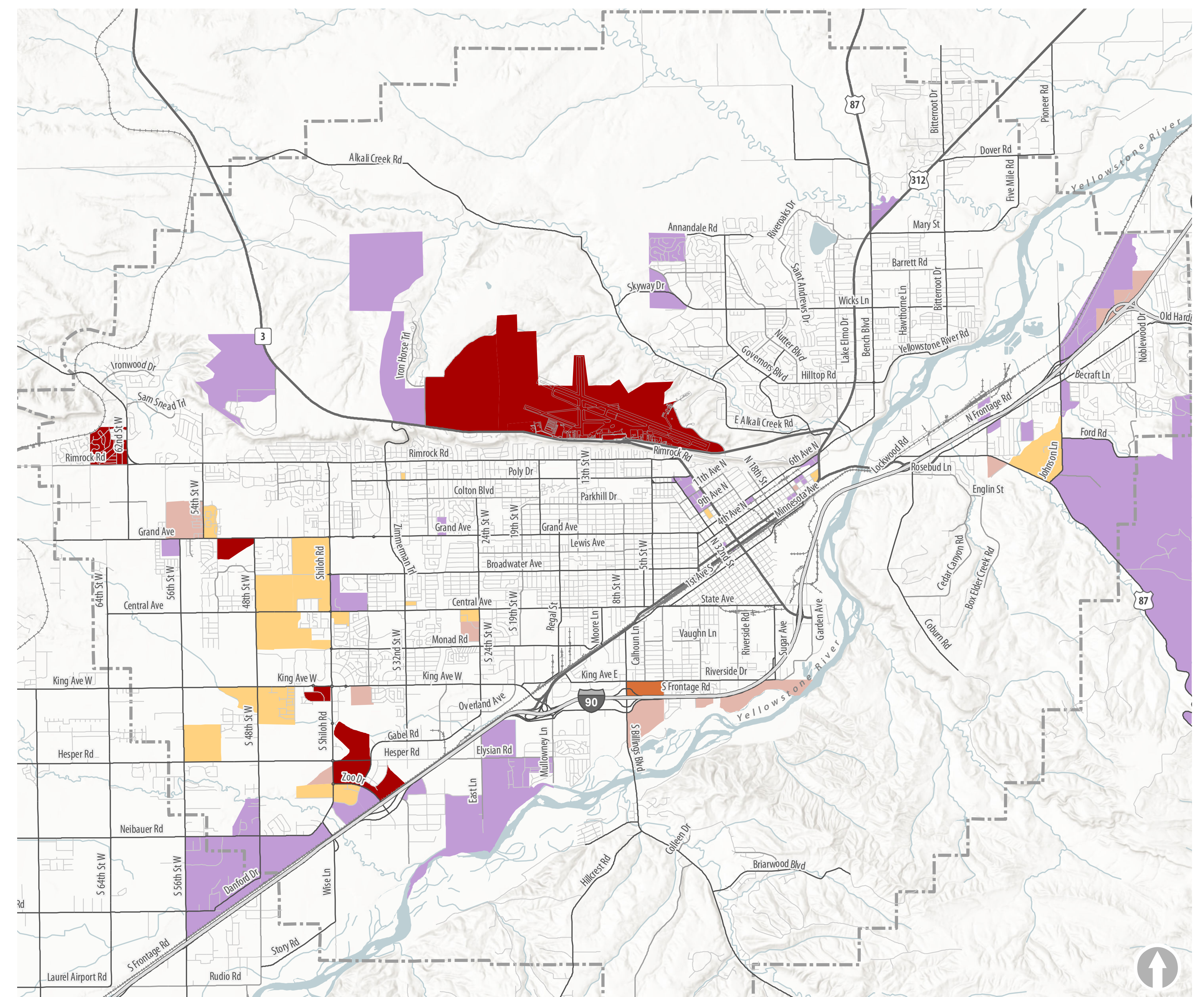
PROJECTED POPULATION AND EMPLOYMENT GROWTH BY 2040



Population Change

2 - 250	251 - 500	1,001 - 1,500	Study Area
	501 - 1,000	1,501 - 2,588	

Population projected to grow by **33.6%** by 2040
 2040 population projection = **170,000**

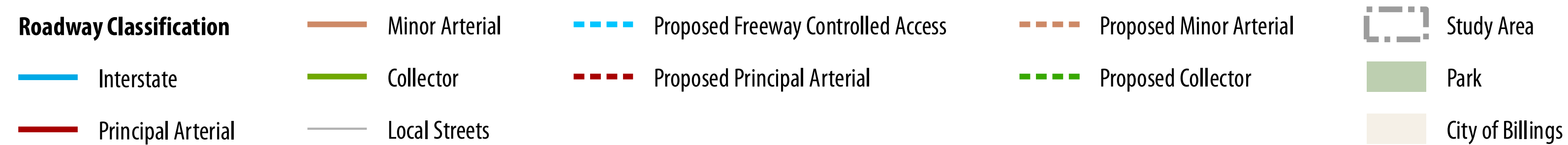
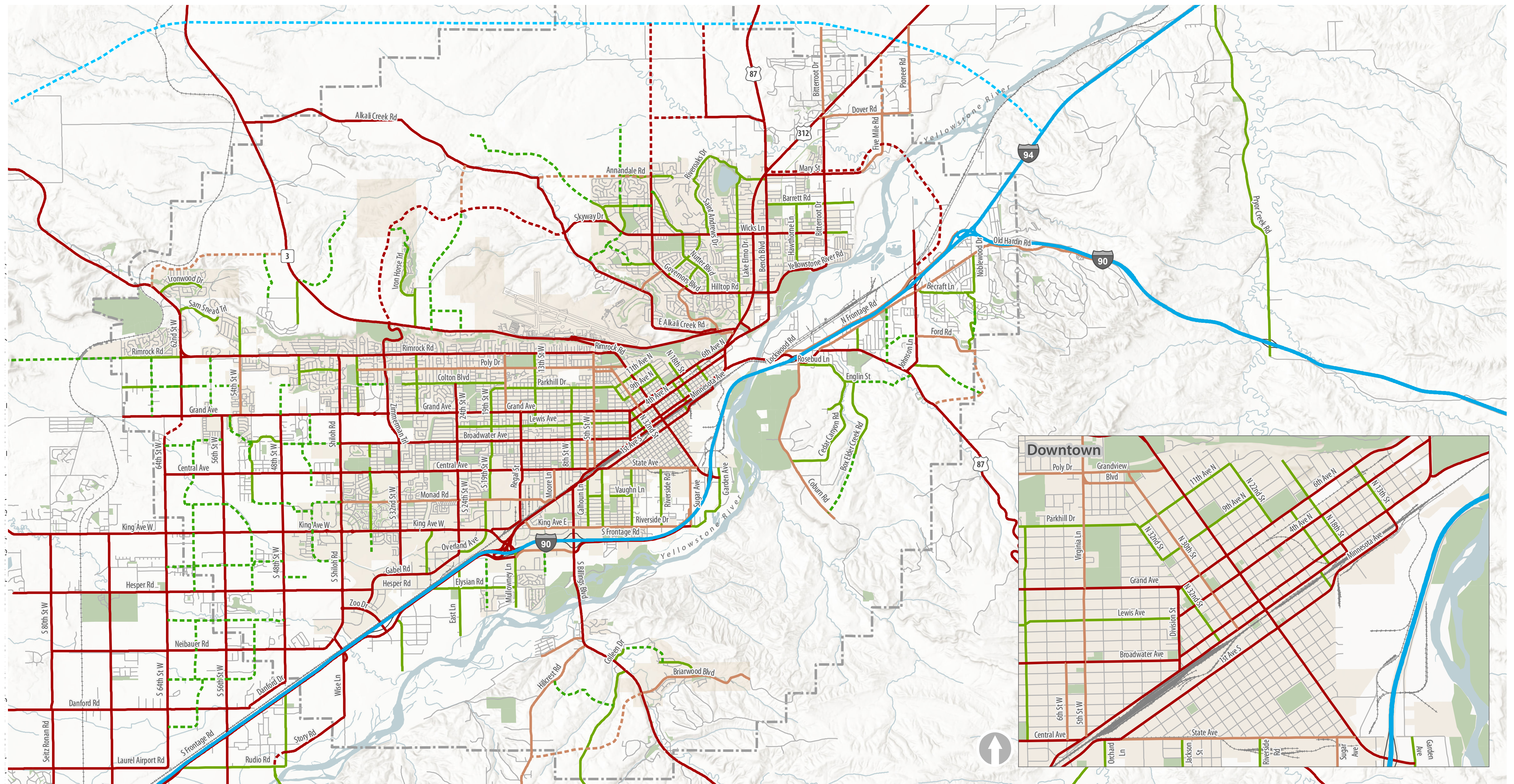


Employment Growth

0 - 100	101 - 200	301 - 400	Study Area
	201 - 300	401 - 500	

Employment projected to grow by **34.3%** by 2040
 2040 jobs projection = **104,000**

FUNCTIONAL CLASSIFICATION



Note: This functional classification map does not represent the federally approved system.

970 Miles of roads

18 Roundabouts

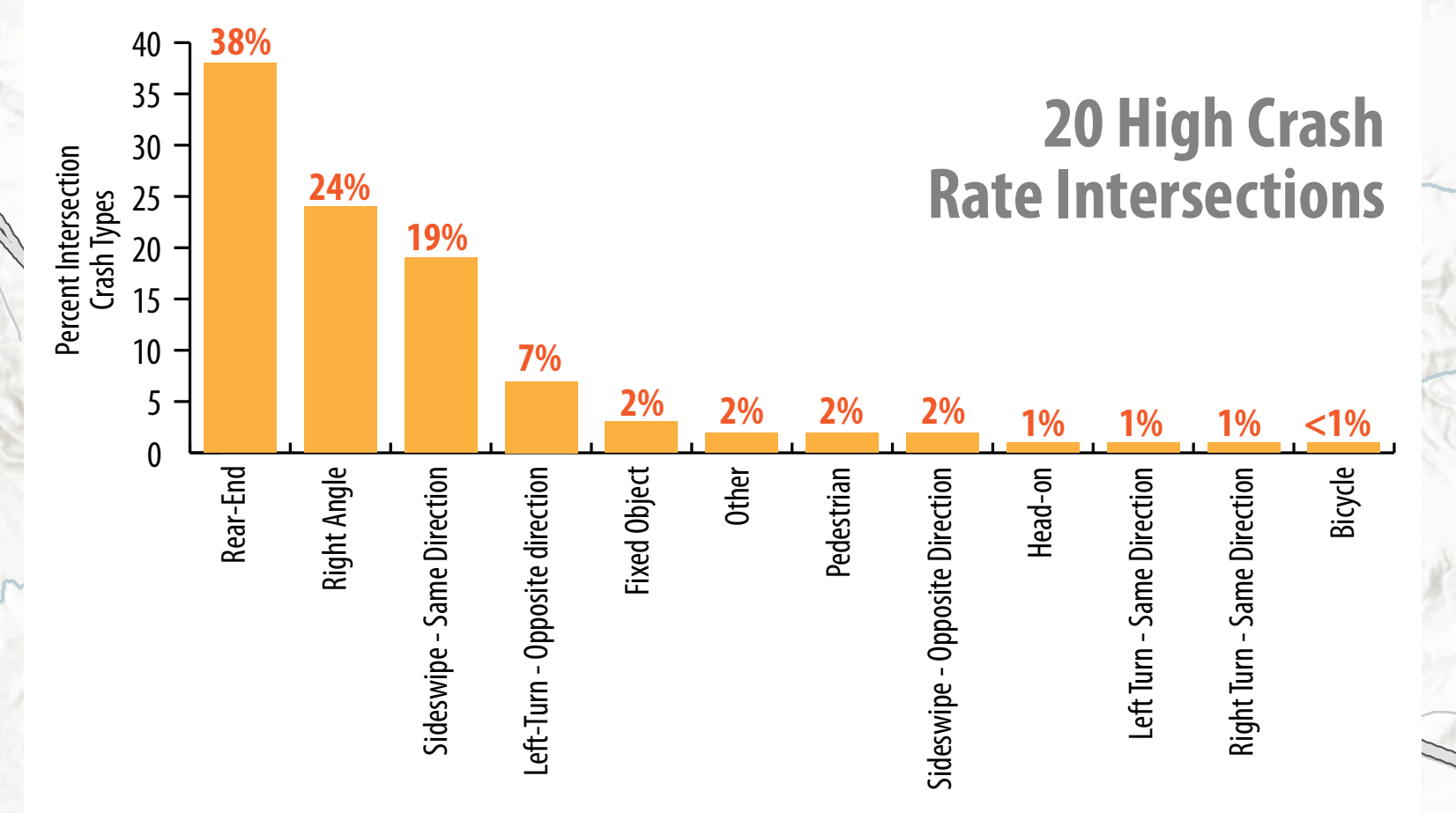
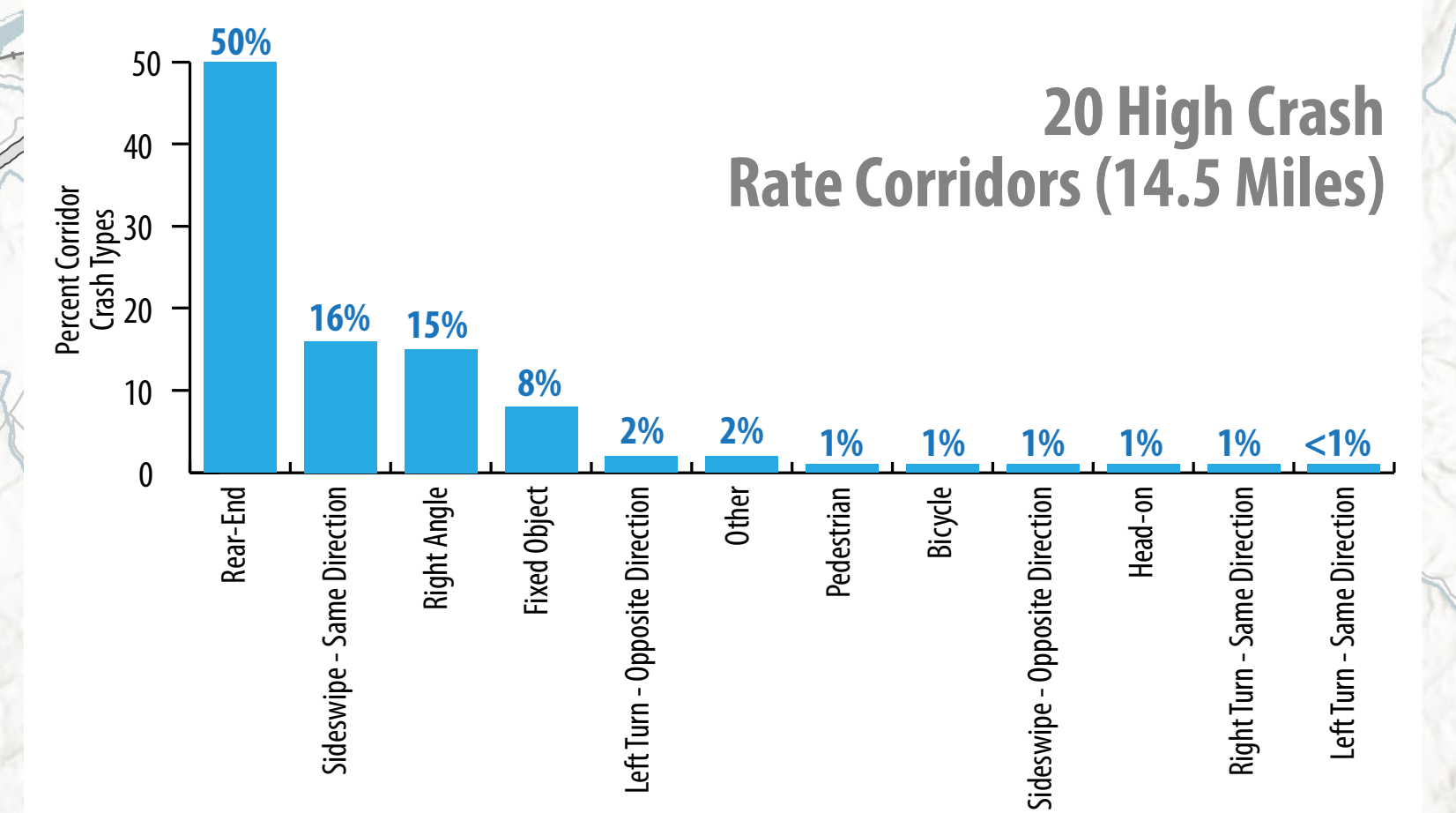
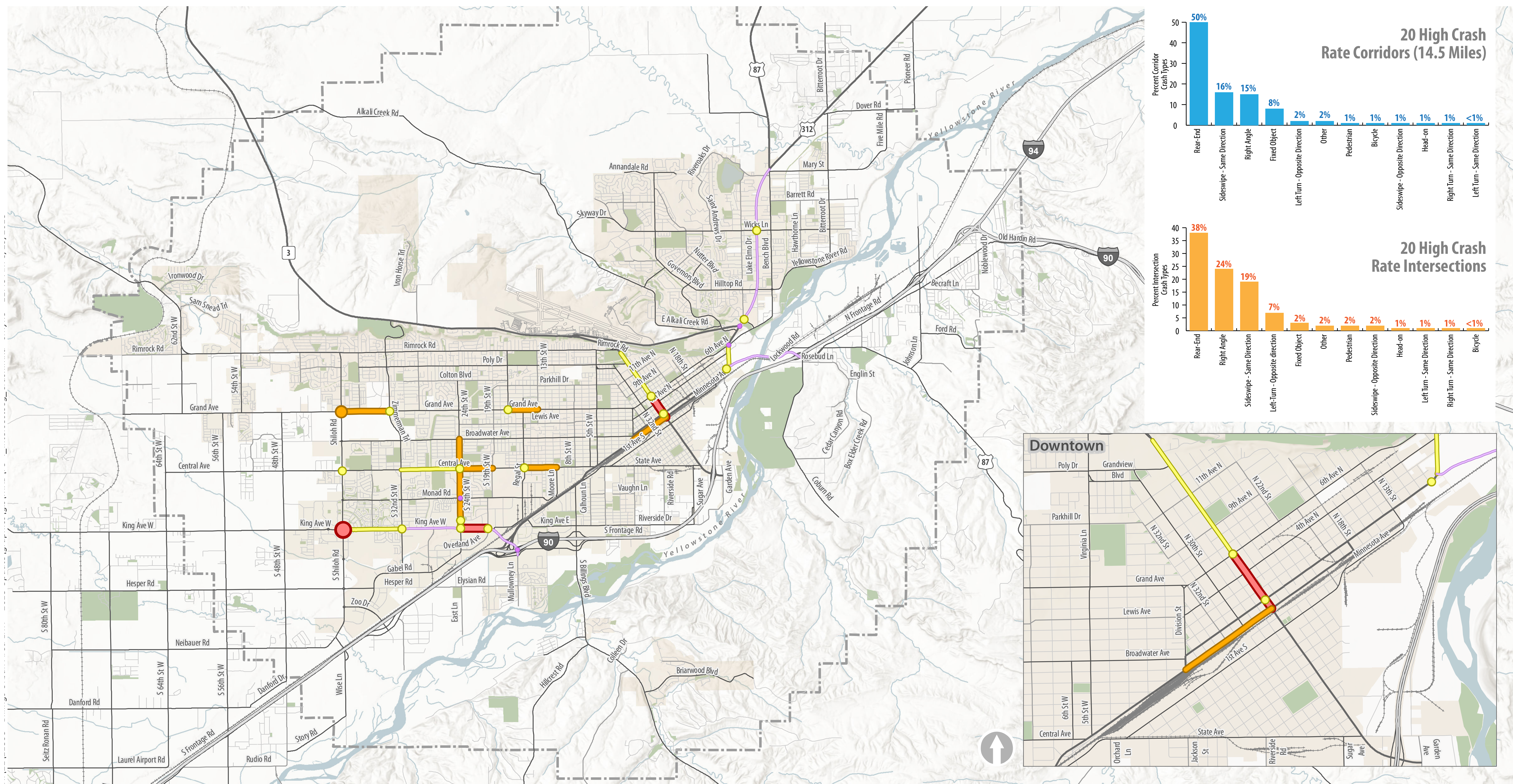
173 Signalized intersections

Freeways serve high speed, long distance travel movements and provide limited access to adjacent lands.

Arterials serve higher volumes of traffic, particularly through-traffic, at higher speeds.

Collectors carry locally generated traffic at lower speeds.

INTERSECTIONS AND CORRIDORS WITH HIGH CRASH RATES

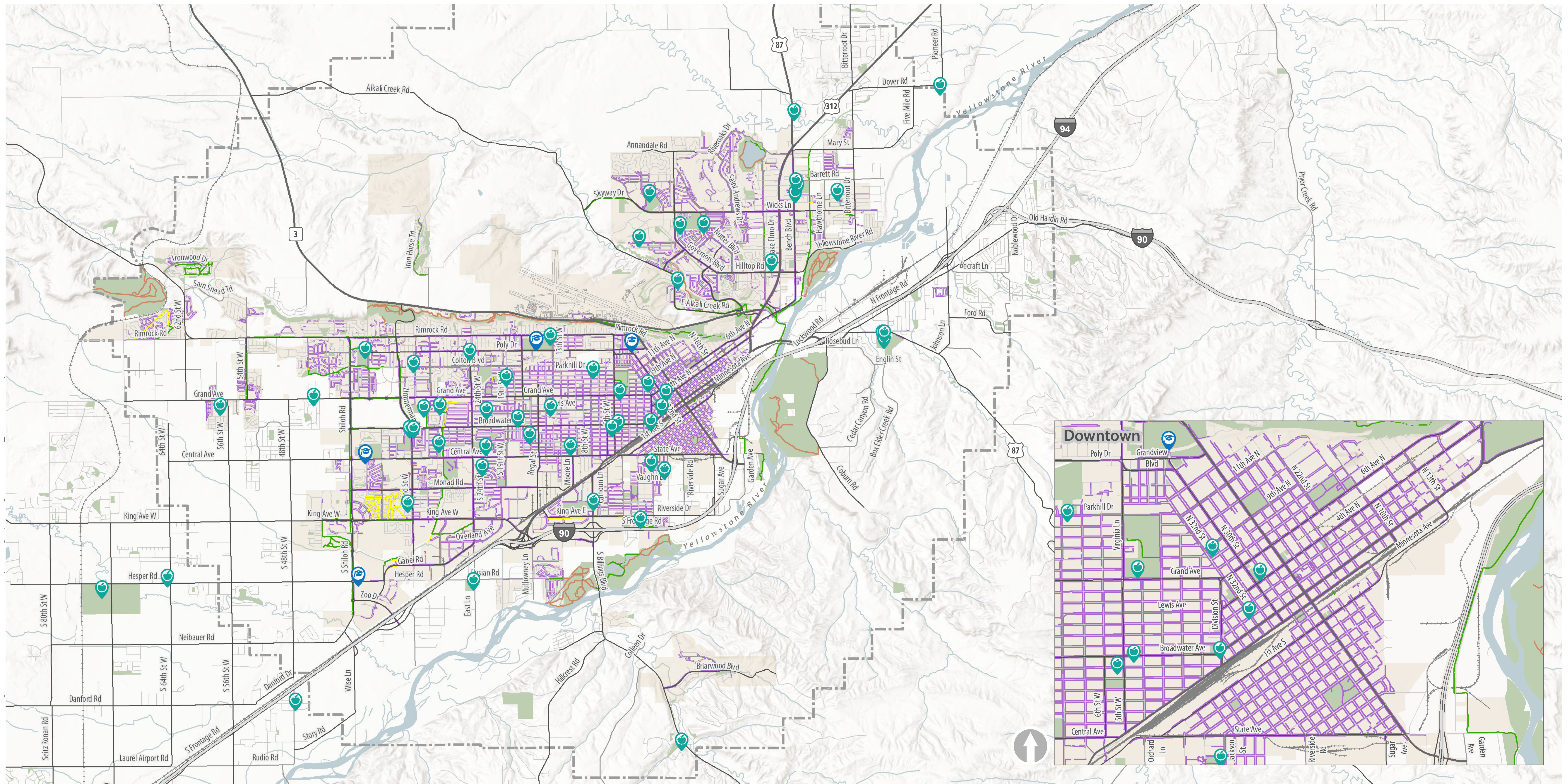


Intersection Crash Rates	Corridor Crash Rates	Study Area
● .53 - 1.0	— 5.6 - 8	□ City of Billings
● 1.0 - 2.0	— 8 - 12	■ Park
● 2.0 - 3.0	— 12 - 15	
● 3.0 - 3.6	— 15 - 29.5	

CRASH SUMMARY:
 14,577 reported crashes between 2013 and 2017
 42 fatal crashes

4,005 injury crashes
 10,430 property damage only crashes
 210 pedestrian crashes (8 fatal)
 140 bicycle crashes (1 fatal)

EXISTING PEDESTRIAN AND TRAIL FACILITIES

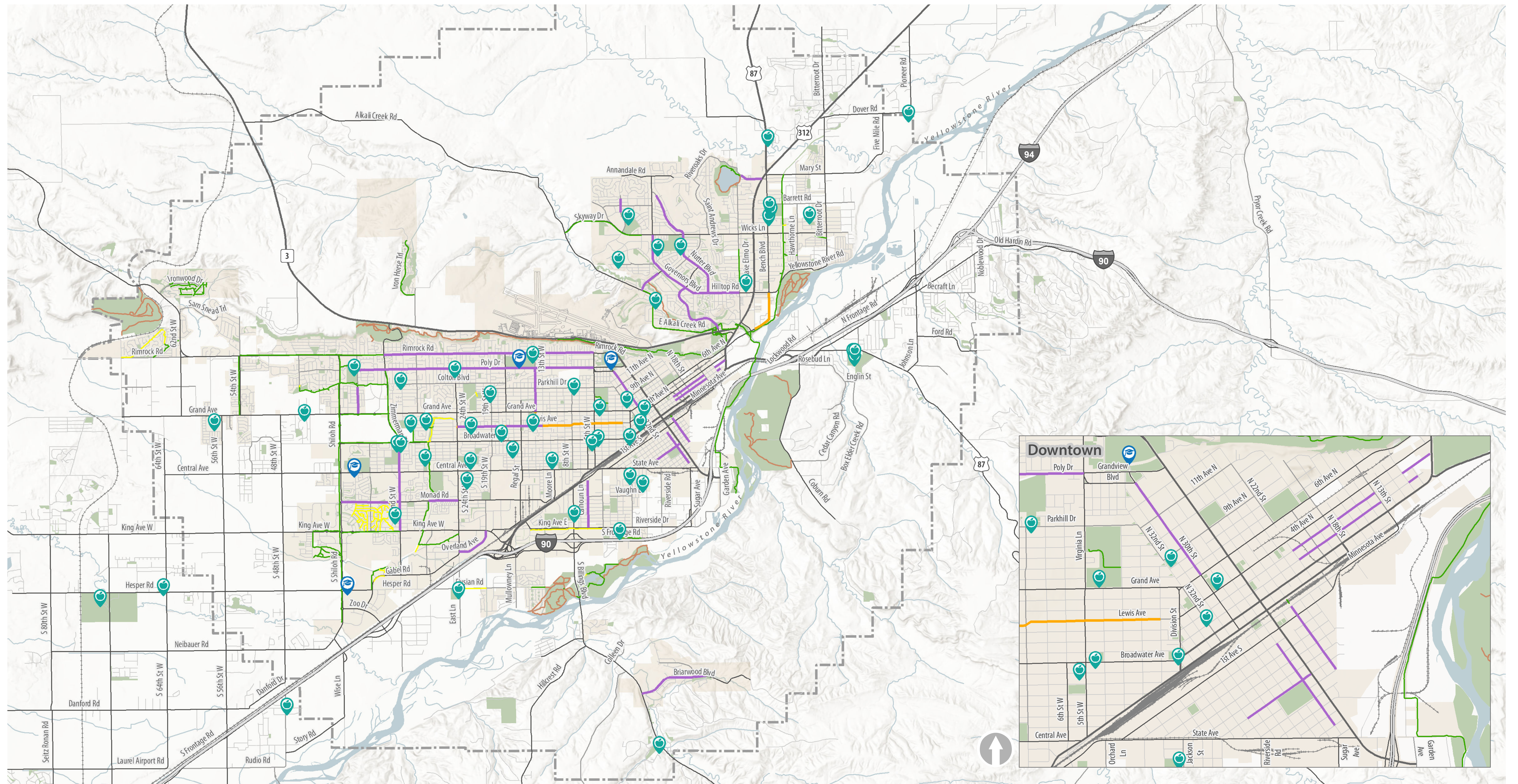


660 Miles of sidewalks
11 Miles of neighborhood trails

45 Miles of shared use paths
3.2% Billings residents commute by walking*

*2016 ACS Data

EXISTING BIKEWAYS AND TRAIL FACILITIES

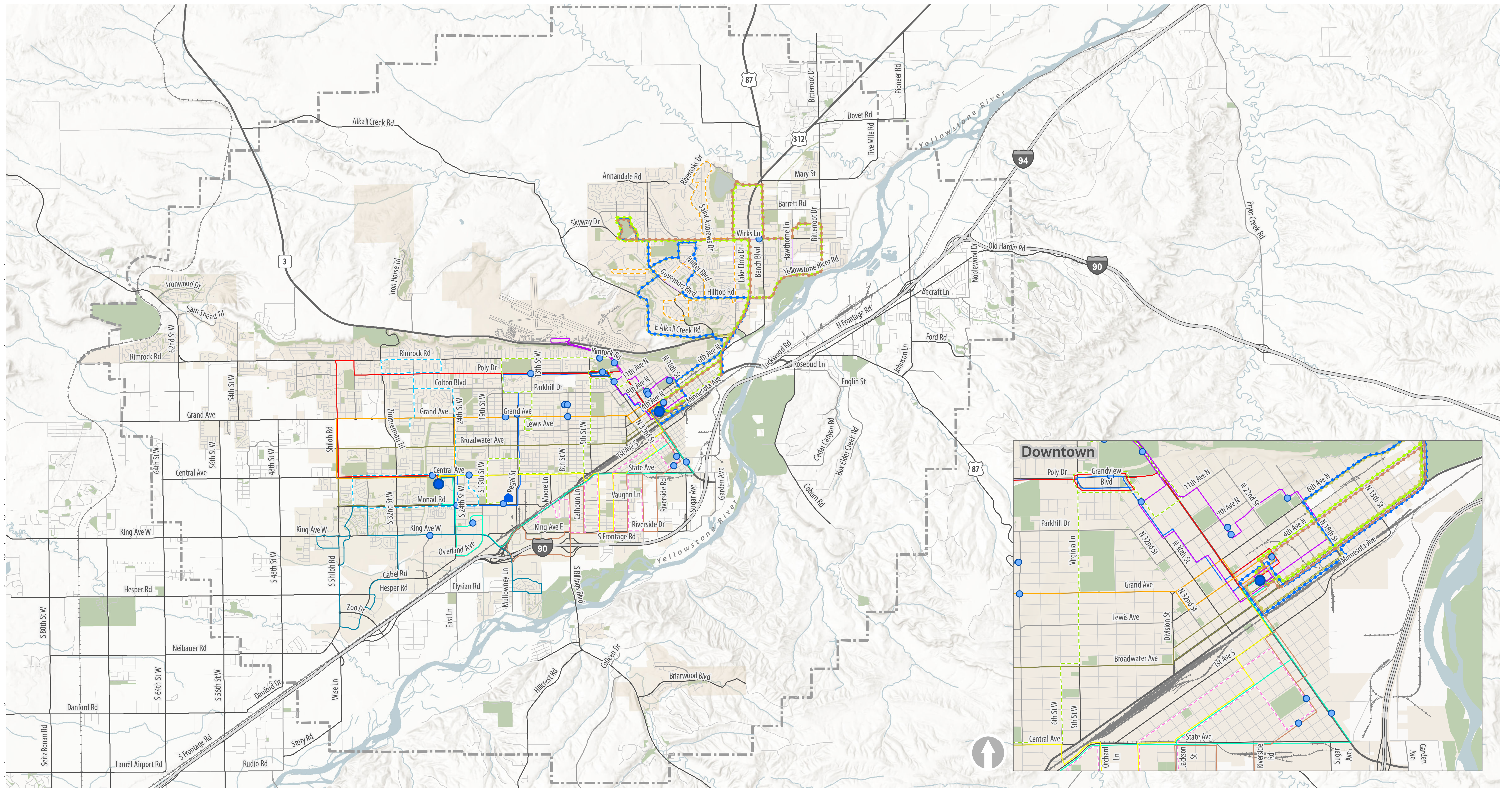


26 Miles of bike lanes
 2.6 Miles of shared lanes
 11 Miles of neighborhood trails

45 Miles of shared use paths
 1% Billings Residents Commute by bike*

*2016 ACS Data

EXISTING BUS ROUTES



- | | | | | | | |
|--------------------|-------------------------|----|----|----|----|------------------|
| ● Bus Shelter | Bus Route Number | 7 | 14 | 18 | T2 | Study Area |
| ■ Transit Office | 1 | 9 | 15 | 19 | T3 | City of Billings |
| ● Transfer Station | 3 | 10 | 16 | 24 | T4 | Park |
| | 5 | 13 | 17 | T1 | | |

18 Routes

1% Billings Residents Commute by bus*

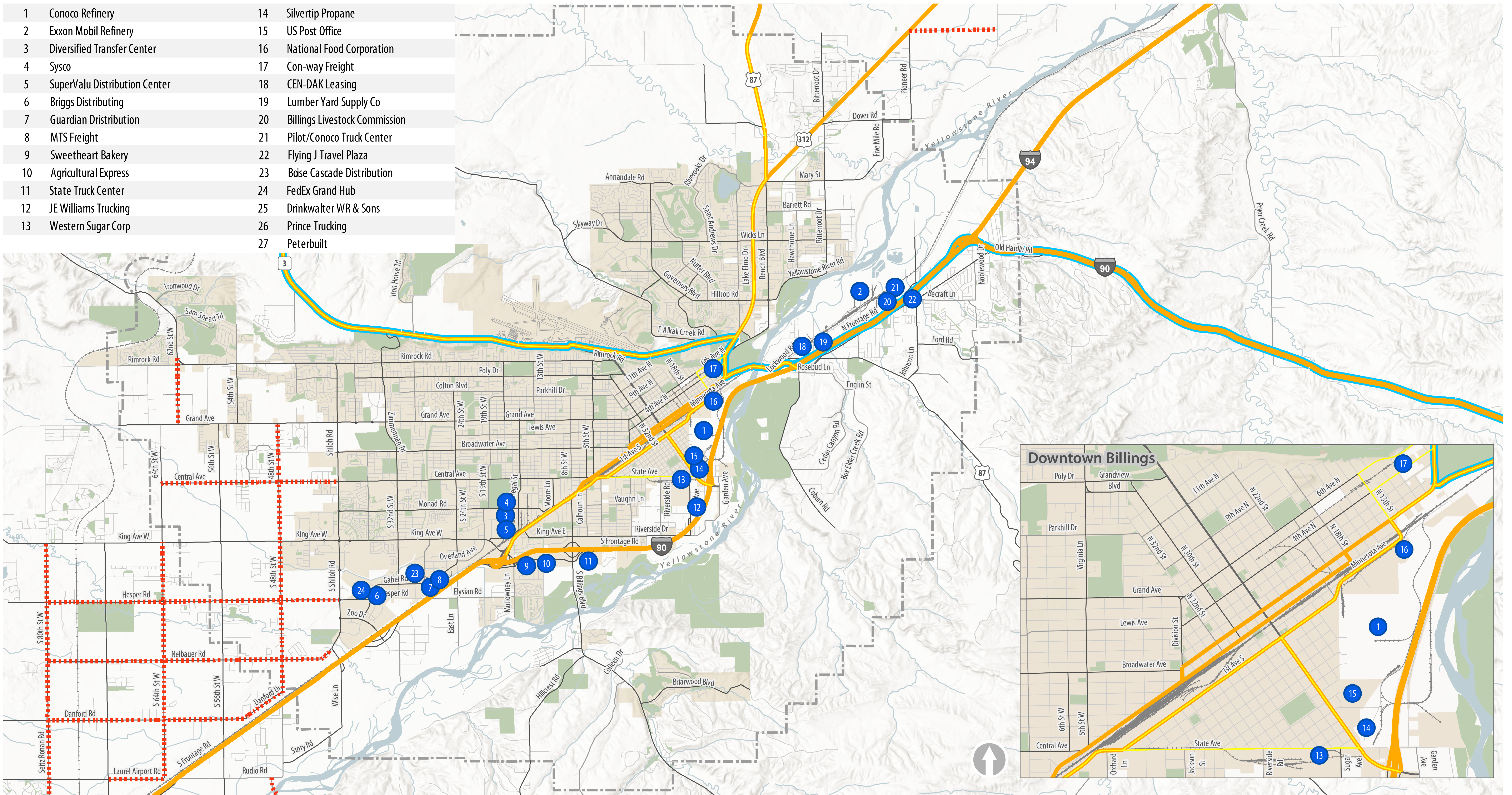
5:50a-6:50p Weekday hours

8:10a-5:45p Saturday hours

*2016 ACS Data

EXISTING TRUCK ROUTES, RESTRICTIONS, AND LOCAL GENERATORS

- | | | | |
|----|-------------------------------|----|-------------------------------|
| 1 | Conoco Refinery | 14 | Silvertip Propane |
| 2 | Exxon Mobil Refinery | 15 | US Post Office |
| 3 | Diversified Transfer Center | 16 | National Food Corporation |
| 4 | Sysco | 17 | Con-way Freight |
| 5 | SuperValu Distribution Center | 18 | CEN-DAK Leasing |
| 6 | Briggs Distributing | 19 | Lumber Yard Supply Co |
| 7 | Guardian Distribution | 20 | Billings Livestock Commission |
| 8 | MTS Freight | 21 | Pilot/Conoco Truck Center |
| 9 | Sweetheart Bakery | 22 | Flying J Travel Plaza |
| 10 | Agricultural Express | 23 | Boise Cascade Distribution |
| 11 | State Truck Center | 24 | FedEx Grand Hub |
| 12 | JE Williams Trucking | 25 | Drinkwater WR & Sons |
| 13 | Western Sugar Corp | 26 | Prince Trucking |
| | | 27 | Peterbilt |

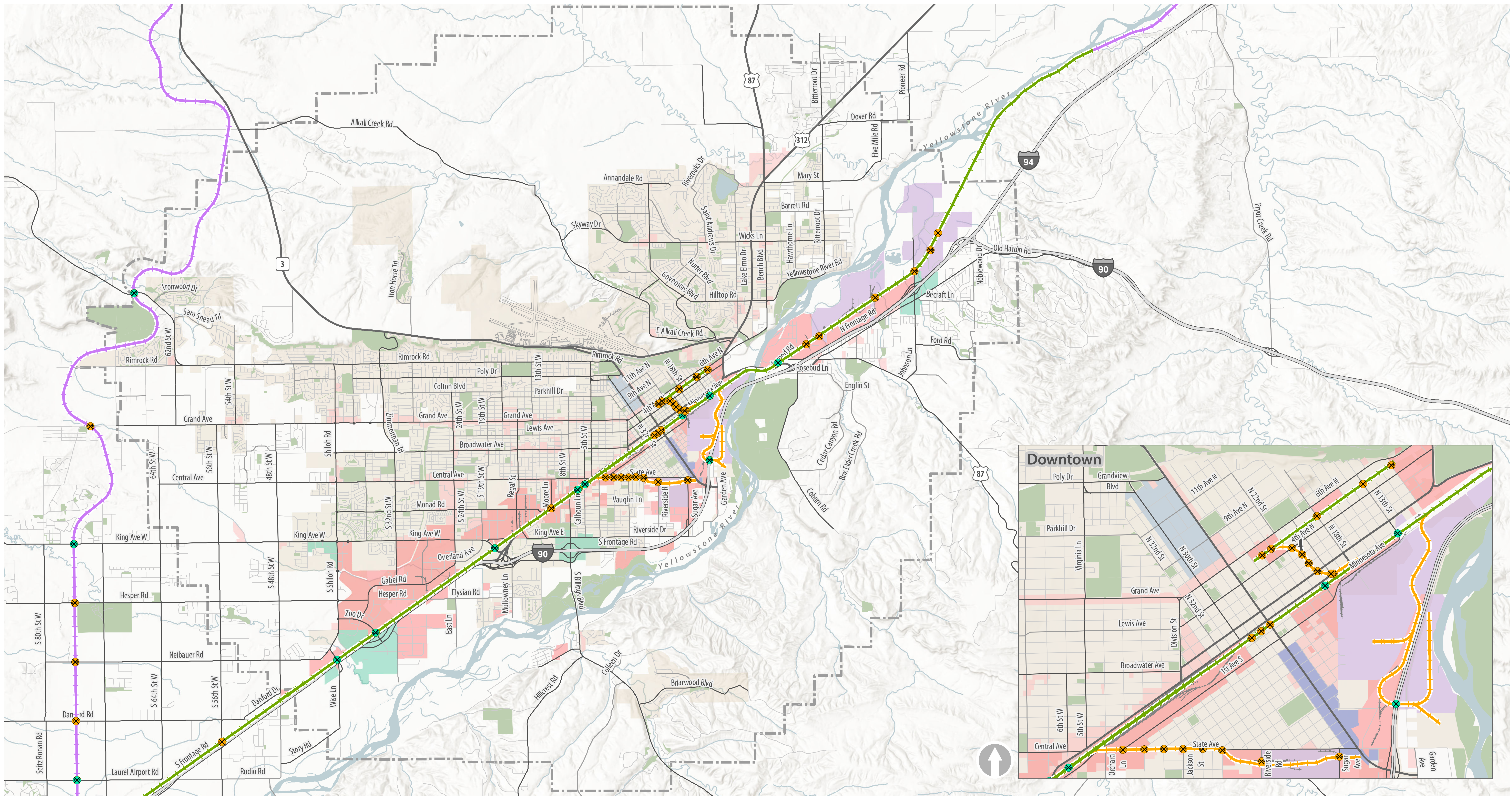


- Major Truck Activity
- Highway Truck Route
- Camino Real Corridor (Federal)
- Intercity Truck Route (City of Billings)
- - - Restricted Truck Routes (Yellowstone county)
- Study Area
- Park
- City of Billings

29.8 Million tons of freight moved by truck in Montana in 2016

Billings urban area among busiest truck hubs in state

EXISTING RAILROAD FACILITIES



- ◆ At Grade Crossing
 — Burlington Northern Santa Fe
 Study Area
- ◆ Grade Separated Crossing
 — Montana Rail Link
 Park
- Spur
 Commercial
 Medical Corridor Permit
- Commercial/Industrial
 South 27th Street Corridor
- Heavy Industrial
 Entryway
- Light Industrial
 City of Billings

34 at-grade railroad crossings

12 grade-separated railroad crossings

NEXT STEPS

Stay Involved

- Sign up on the “Notify Me” list on the City’s website: <http://ci.billings.mt.us/>
- Check back frequently for updates on our project website at www.billingslrtp.com
- Contact **Scott Walker** (MPO) at 406.657.8246 or via email at walkers@ci.billings.mt.us

What is Next?

- Review and address comments received from the public on the Draft LRTP
- Finalize the LRTP for plan adoption
- Coordinate the plan adoption process in October 2018

All displays and handouts from tonight will be posted on the project website at www.billingslrtp.com for review and comment.

Thank you for participating!