

WELCOME!

Thank you for attending tonight's open house for the Billings Urban Area Long Range Transportation Plan. The purpose of this open house is to give you an opportunity to learn about the plan, review technical information, and provide comment on the following three items:

- What goals are most important to you for the plan?
- What transportation needs and opportunities exist today?
- What would you like to see for the future transportation system?

Who Is Involved?



The primary sounding board is the Steering Committee (SC), which includes representatives from the above agencies. Public involvement is a major contributor to the plan development.

The consultant team for the project includes Kittelson & Associates, Inc. and DOWL.



WHAT IS A LONG RANGE TRANSPORTATION PLAN (LRTP)?

The Billings-Yellowstone County Metropolitan Planning Organization (MPO) is preparing a long range transportation plan (LRTP) to address travel by people and goods and meet the local, state, and federal requirements. The plan is a blueprint to guide the development and implementation of needed transportation system projects for the Billings Urban Area.

MPOs are required to update their transportation plan every four years. The last plan for Billings was completed in 2014.

The LRTP includes:

Planning for the next 20 years

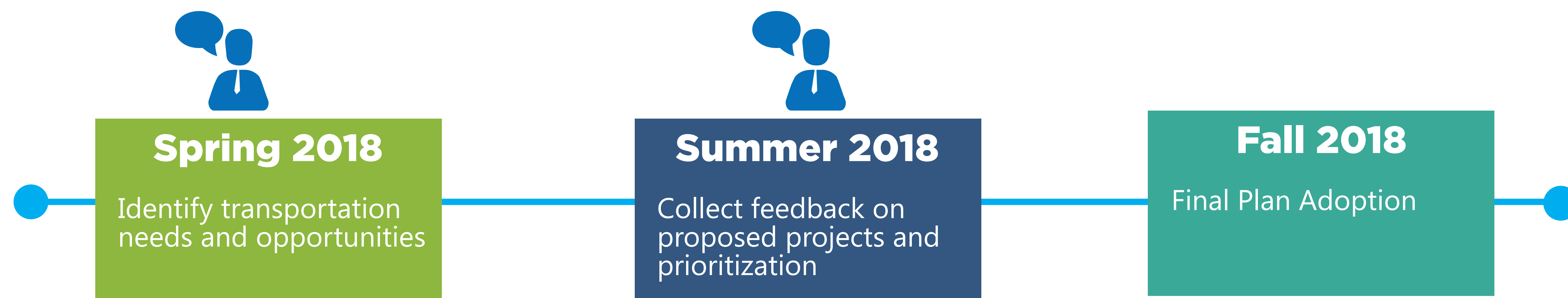
Engaging the public for input and comment

Assessing facilities and operations of the different transportation modes

Identifying transportation needs and a set of short and long-range transportation projects

Constraining the recommendations financially

LRTP TIMELINE

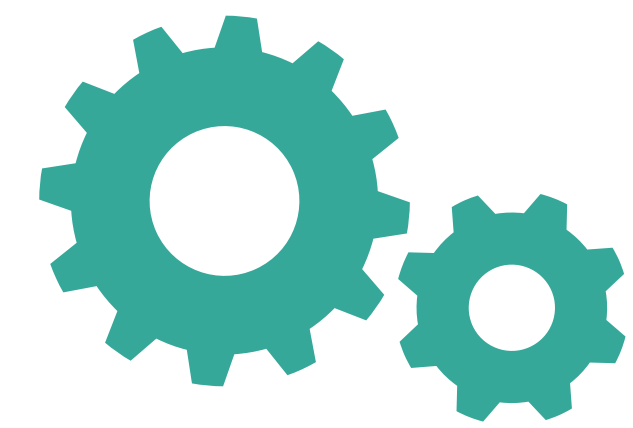


DRAFT GOALS FOR 2018 LRTP



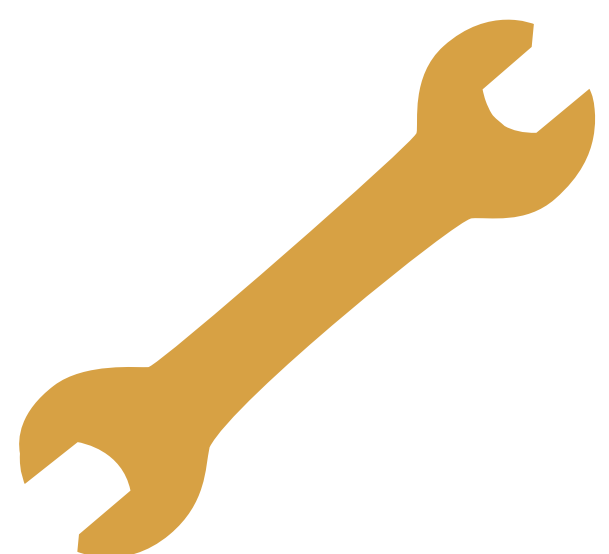
Safe, Efficient, Effective

Develop a transportation system that is safe, efficient, and effective



Functional Integrity

Optimize, preserve, and enhance the existing transportation system



Prioritized Improvements

Identify and prioritize projects that mitigate deficiencies, maximize the use of existing facilities, and balance anticipated needs with available funding



Environment Develop a transportation system that protects the natural environment and promotes a healthy, sustainable community

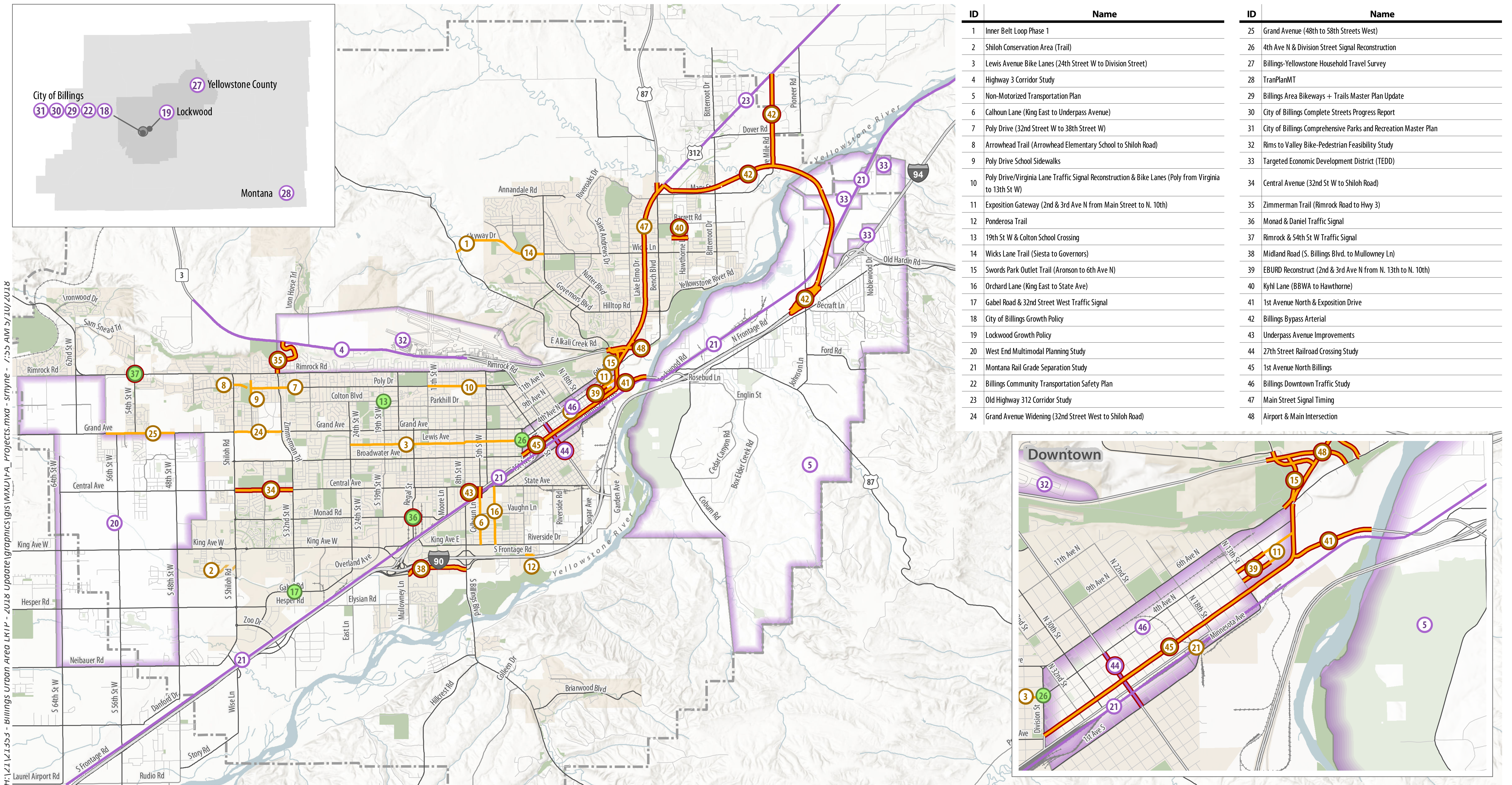


Multimodal Create a transportation system that supports the practical and efficient use of all modes of transportation



Economic Vitality Ensure adequate transportation facilities to support the existing local economy and connect Billings to local, regional, and national commerce

WHAT TRANSPORTATION PROJECTS HAVE BEEN COMPLETED SINCE THE 2014 LRTP?



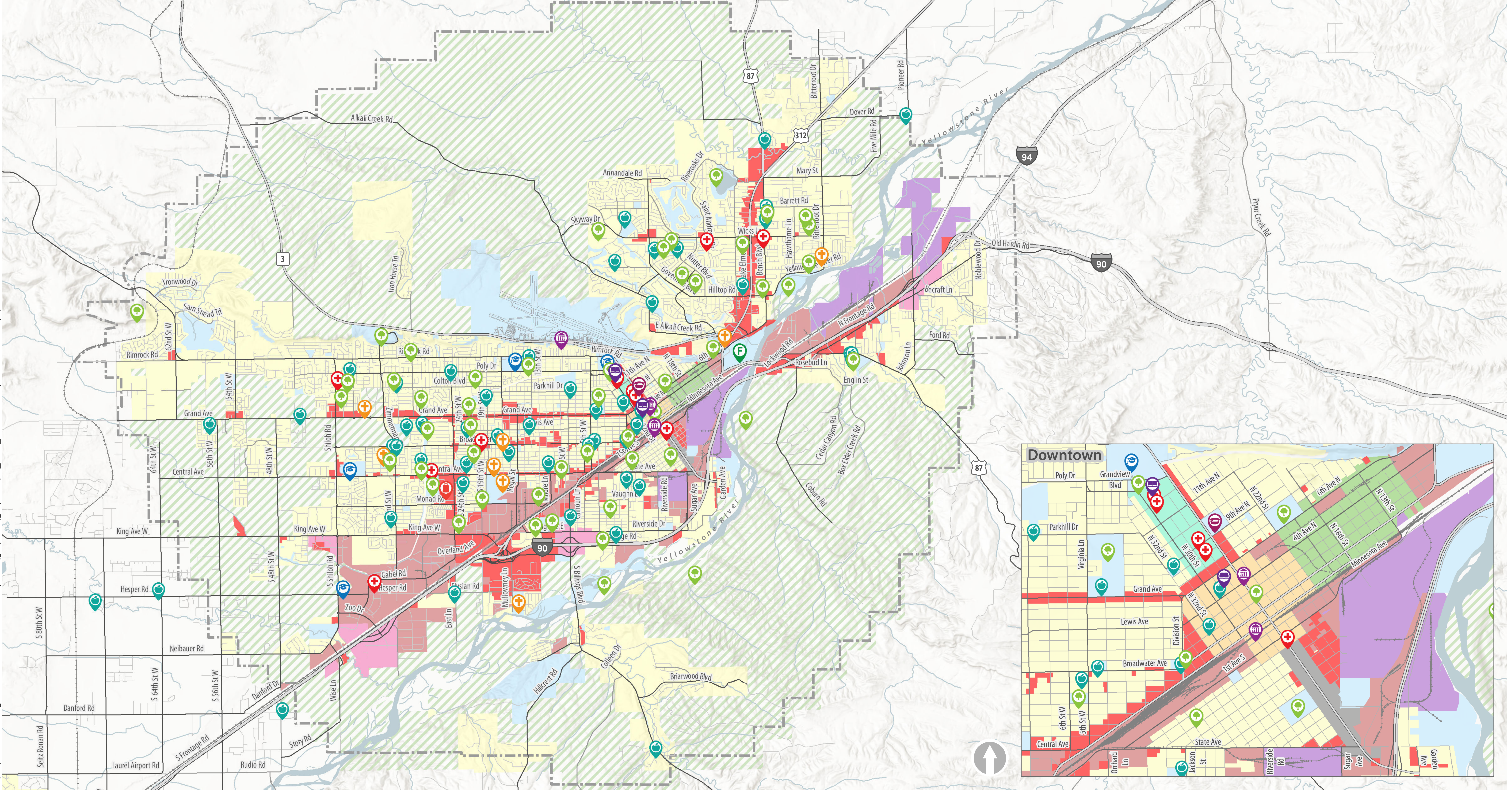
18 completed projects

15 Ongoing projects/studies/plans

15 completed studies/plans

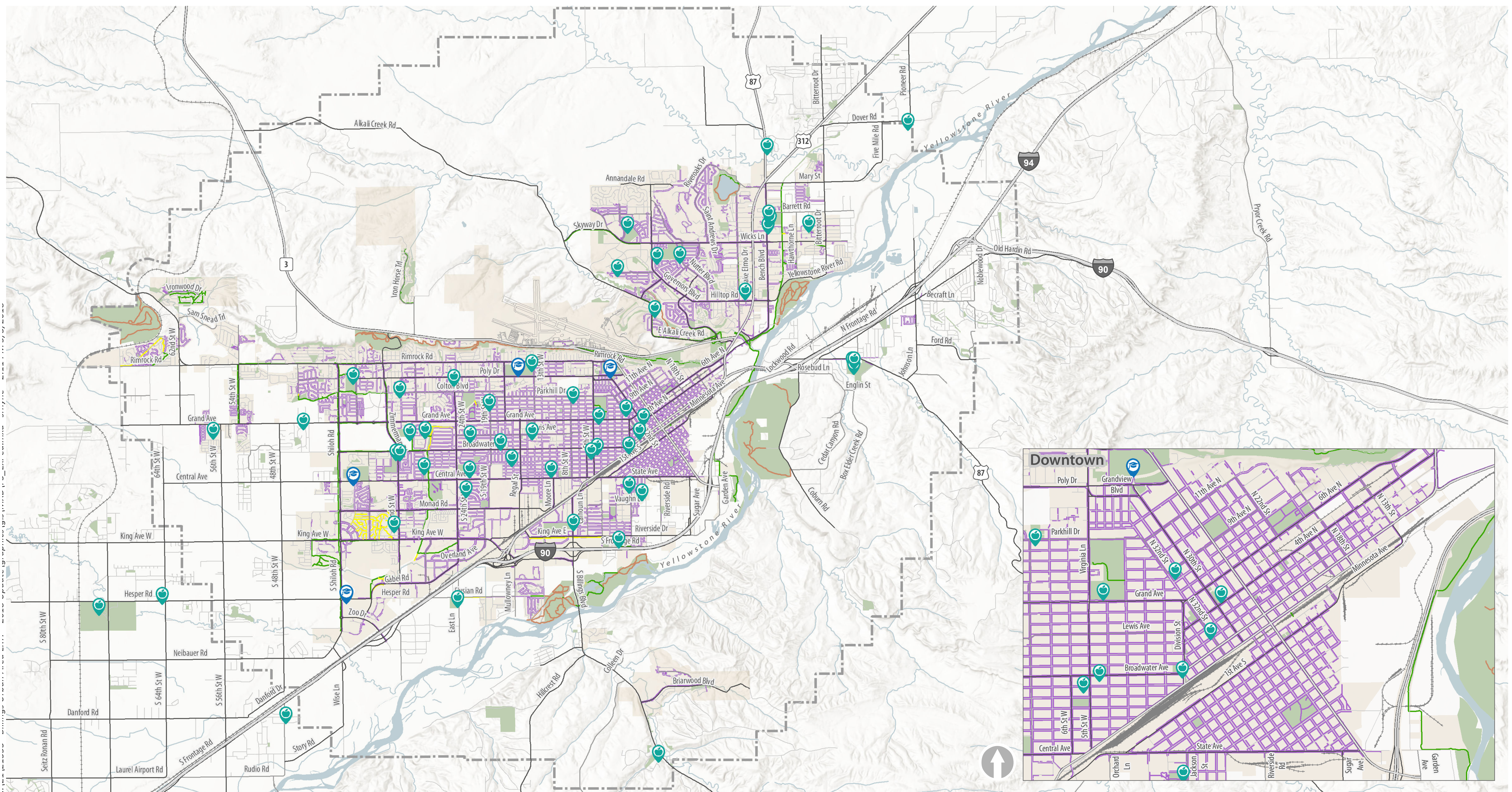
EXISTING LAND USE

HI:12121353 - Billings Urban Area LRTP - 2018 Update (graphics) [MXD] (F2_Exist_LU.mxd - srhyme - 2:09 PM 5/3/2018)



- | | | | | | | | | | |
|---------|---------------|---------|-------------|----------|-----------------------|---------------------------|------------------|-------------------------------------|------------|
| College | Shopping Mall | Stadium | Fairgrounds | Cemetery | Residential | Central Business District | Light Industrial | Entryway | Study Area |
| Schools | Museum | Library | Park | Hospital | Commercial | Medical Corridor Permit | Heavy Industrial | South 27th Street Corridor | |
| | | | | | Commercial/Industrial | Public | Agricultural | East Billing Urban Renewal District | |

EXISTING PEDESTRIAN AND TRAIL FACILITIES



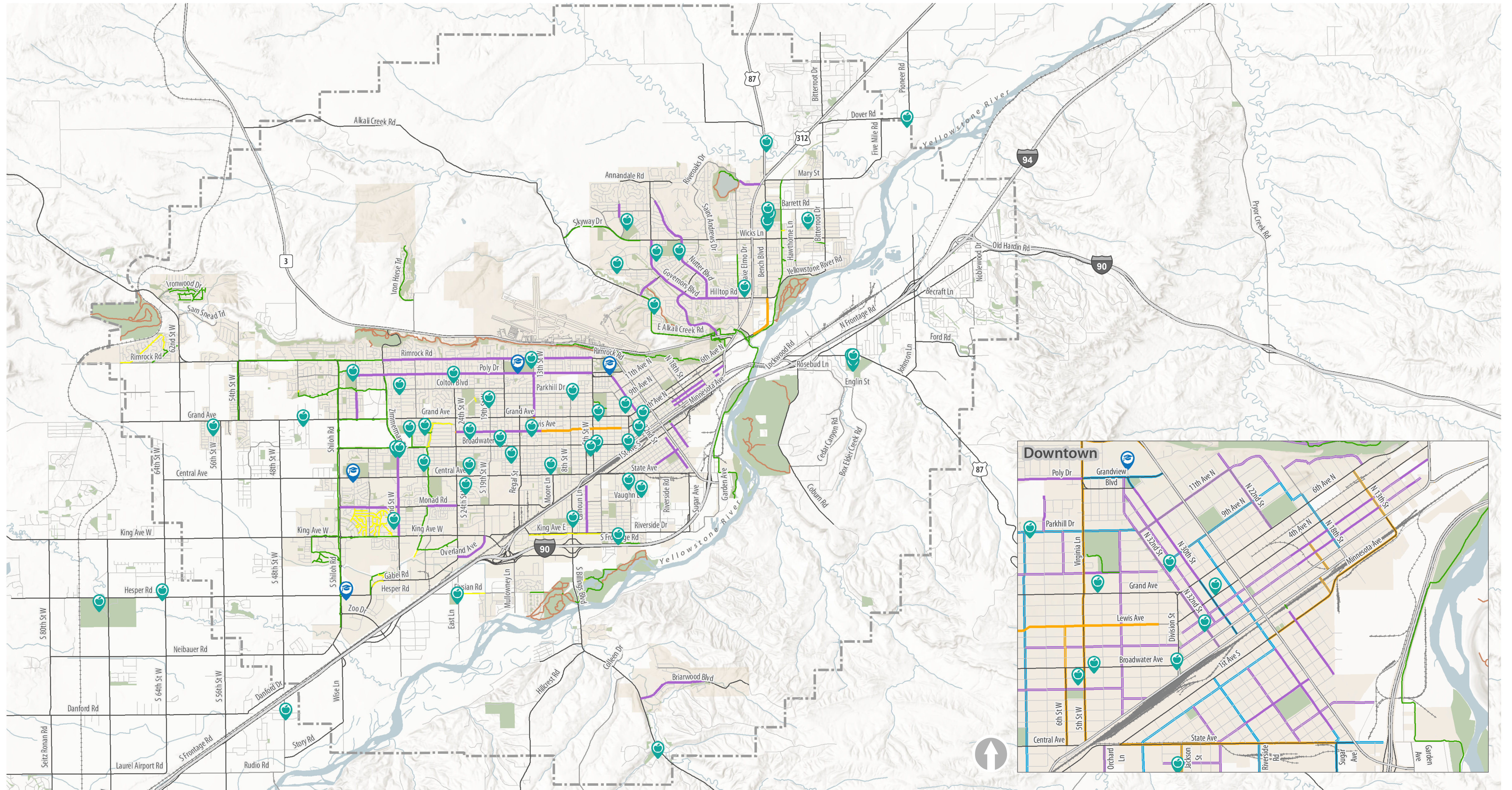
45 Miles of shared use paths

660 Miles of sidewalks

3.3% Billings residents commute by walking*

11 Miles of neighborhood trails

EXISTING BIKEWAYS AND TRAIL FACILITIES



26 Miles of bike lanes

2.6 Miles of shared lanes

11 Miles of neighborhood trails

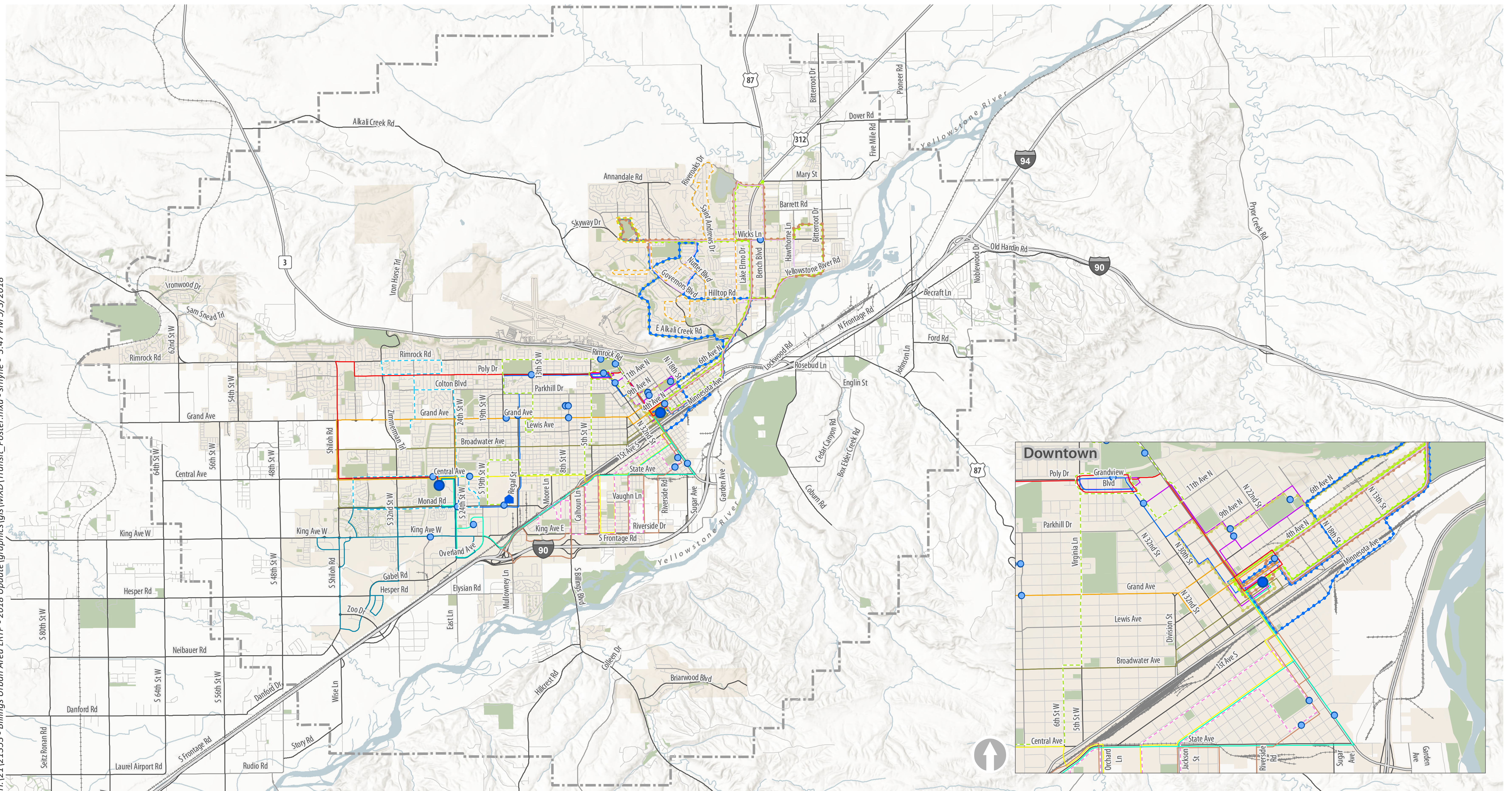
45 Miles of shared use paths

1% Billings Residents Commute by bike*

*2010-14 ACS Data

EXISTING BUS ROUTES

H:\121121353 - Billings Urban Area LRTP - 2018 Update\graphics\gis\Transit\Poster_mxd - srhnye - 3:47 PM 5/3/2018



- | | | | | | | | |
|--------------------------------------|------------------|----|-----|----|-----|----|------------------|
| Bus Shelter | Bus Route Number | 5* | 10 | 15 | 18* | T1 | Study Area |
| Transit Office | 1 | 7* | 13* | 16 | 19* | T2 | City of Billings |
| Transfer Station | 3* | 9* | 14 | 17 | 24 | T3 | Park |
| * Bus services operating on Saturday | | | | | | | T4 |

18 Routes

1% Billings Residents Commute by bus*

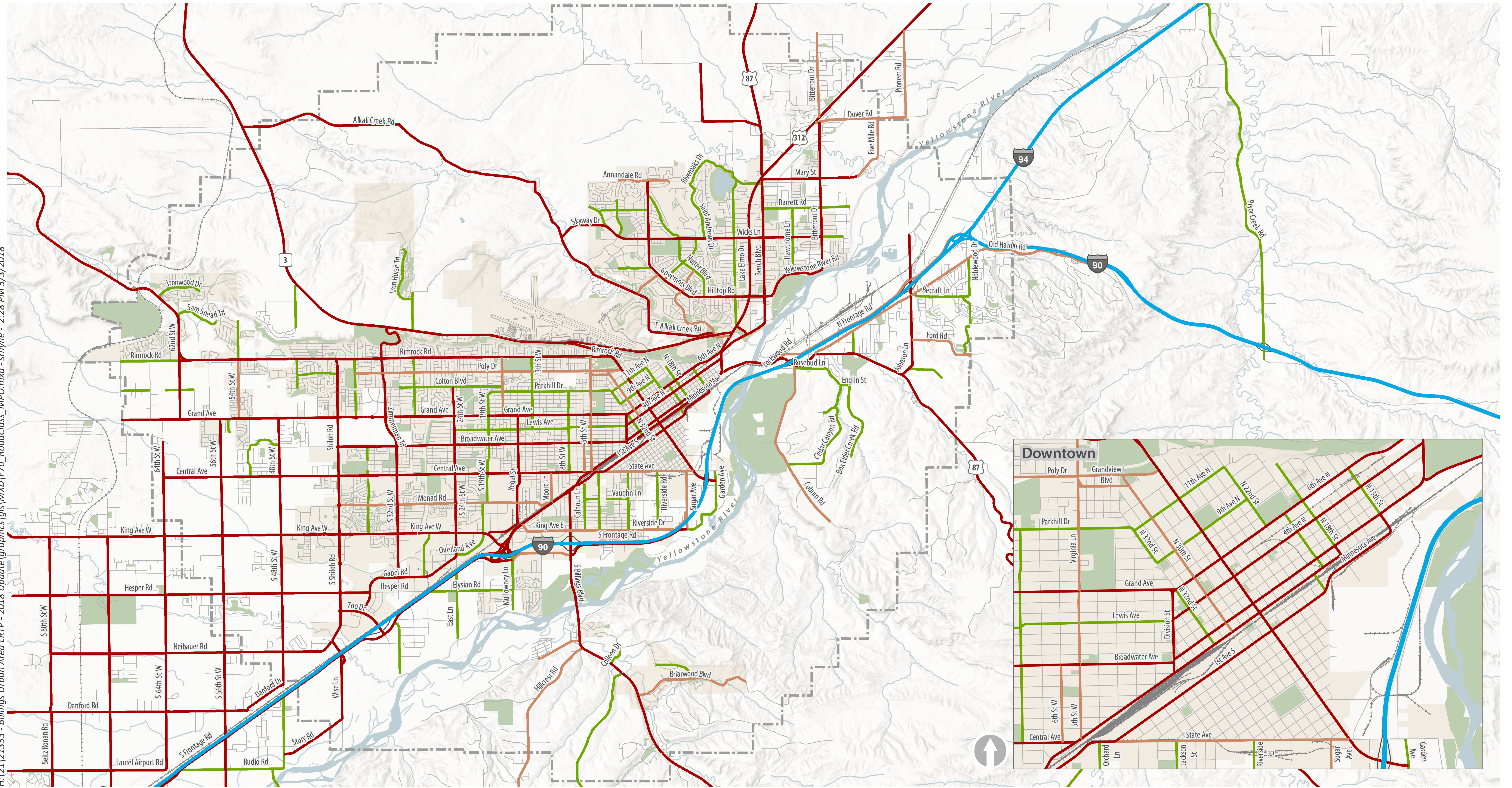
5:50a-6:50p Weekday hours

8:10a-5:45p Saturday hours

*2010-14 ACS Data

EXISTING ROADWAY FUNCTIONAL CLASSIFICATION

H:\12121353 - Billings Urban Area LRTP - 2018 Update\graphics\gis\MXD\F7a_RoadClass_MPO.mxd - srhnye - 2:28 PM 5/3/2018



- | | | |
|-------------------------------|----------------|------------------|
| Roadway Classification | Minor Arterial | Study Area |
| Interstate | Collector | Park |
| Principal Arterial | Local Streets | City of Billings |

970 Miles of roads

18 Roundabouts

173 of signalized intersections

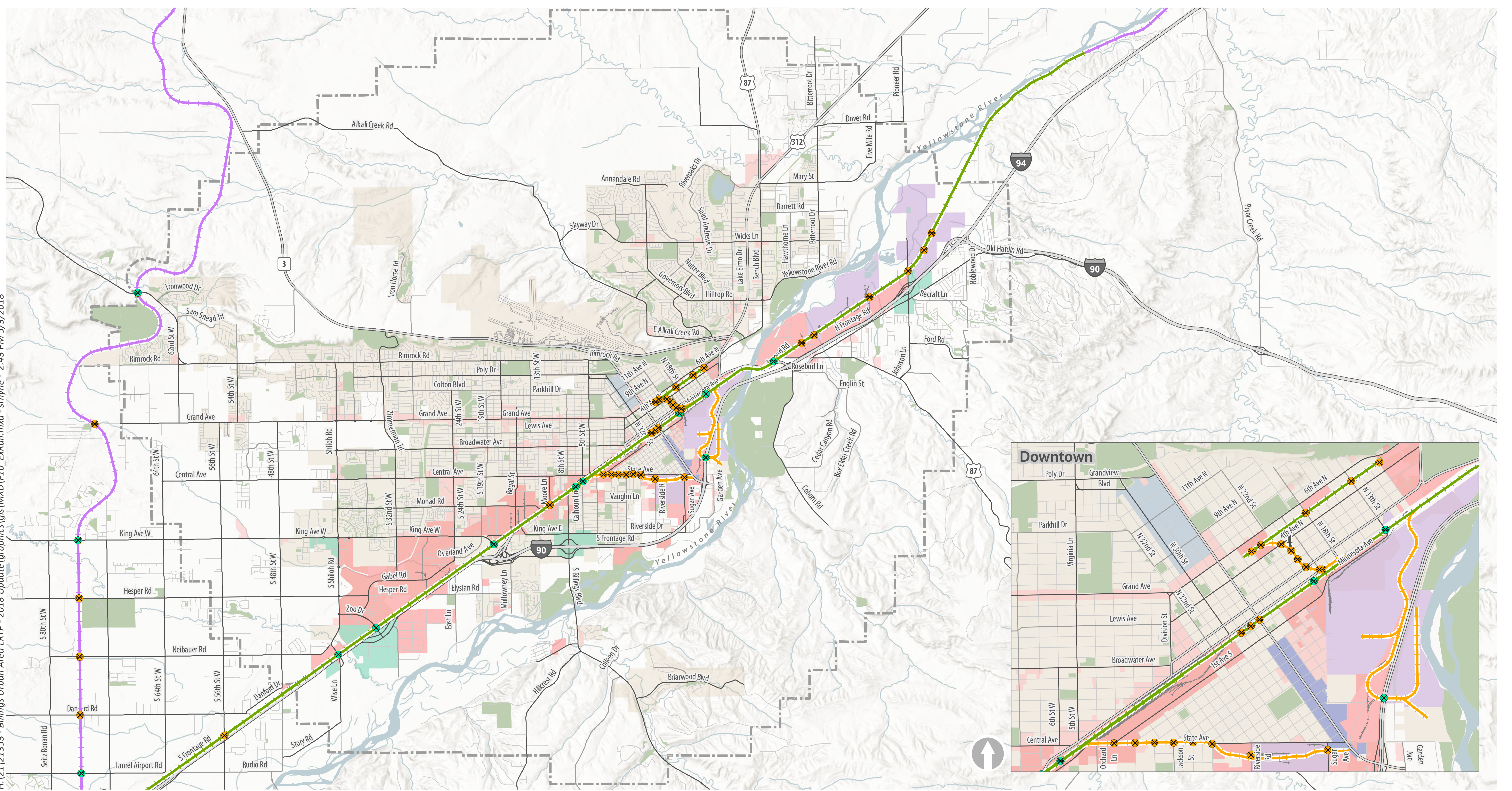
Freeways serve high speed, long distance travel movements and provide limited access to adjacent lands.

Arterials serve higher volumes of traffic, particularly through-traffic, at higher speeds.

Collectors carry locally generated traffic at lower speeds.

EXISTING RAILROAD FACILITIES

H:\21121353 - Billings Urban Area LRTP - 2018 Update\graphics\IGS\MMD\F10_Extra\mxd - srfhne - 2:43 PM 5/3/2018



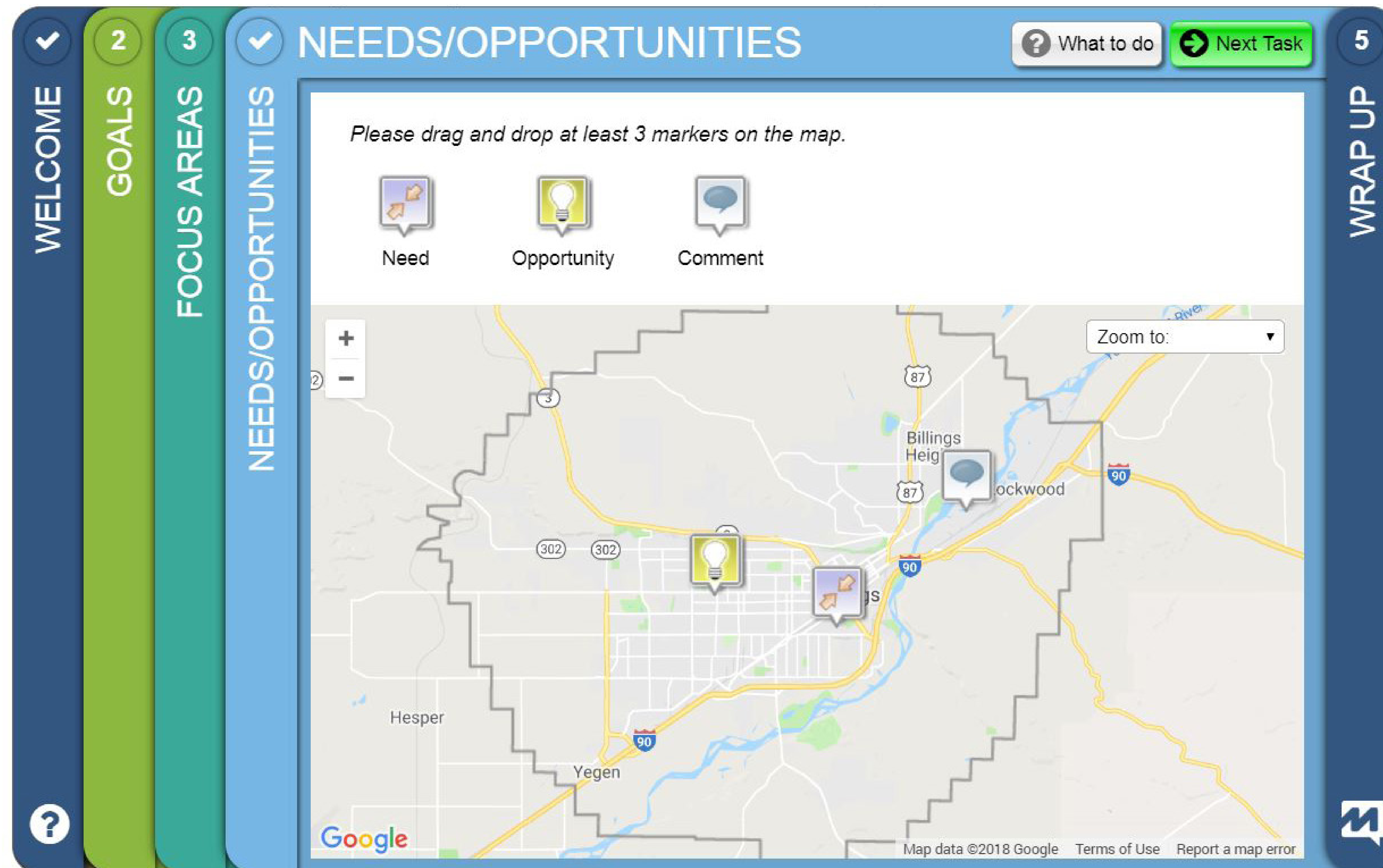
- | | | | | |
|--------------------------|------------------------------|------------------|-----------------------|----------------------------|
| At Grade Crossing | Burlington Northern Santa Fe | Study Area | Commercial | Medical Corridor Permit |
| Grade Separated Crossing | Montana Rail Link | Park | Commercial/Industrial | South 27th Street Corridor |
| Spur | | Light Industrial | Heavy Industrial | Entryway |
| | | | City of Billings | |

36 at-grade railroad crossings 12 grade-separated railroad crossings

HELP US IDENTIFY THE TRANSPORTATION NEEDS AND OPPORTUNITIES

Based on your understanding of the transportation system, please use the numbered stickers and map to identify the location of needs and opportunities.

Additionally, we have an interactive survey tool (screen shot below) set-up on the iPad that you can use to identify needs and opportunities.



HELP US IDENTIFY THE FUTURE TRANSPORTATION VISION FOR THE BILLINGS-URBAN AREA

In the next phase of the LRTP, a short- and long-range project list will be identified to address current and future transportation needs. This project list will be financially constrained. To assist the project team in identifying the vision and project priorities, please use your comment sheet to identify the three areas that are most important to you.



Roadways



Trucks/Freight



Pedestrians



Intersections



Bus Transit



Bicycles



Railroad



Airport

NEXT STEPS

Stay Involved

- Sign up on the “Notify Me” list on the City’s website: <http://ci.billings.mt.us/>
- Attend future public meetings
- Check back frequently for updates on our project website at www.billingslrtp.com
- Provide comments via our interactive web map survey: <http://maps.kittelson.com/billingslrtp>
- Contact **Scott Walker** (MPO) at 406.657.8246 or via email at walkers@ci.billings.mt.us

What is Next?

- Summarize comments from Public Informational Meeting #1
- Develop and analyze year 2040 conditions
- Prepare a draft list of short and long range projects
- Present materials at Public Informational Meeting #2 (September 2018)
- Prepare draft plan for review and comment

All displays and handouts from tonight will be posted on the project website at www.billingslrtp.com for review and comment.

Thank you for participating!