

MEMORANDUM

Date: June 12, 2018

Project #: 21353

To: Steering Committee

From: Andy Daleiden, PE

Project: 2018 Billings Urban Area Long Range Transportation Plan

Subject: Public Comment Summary #1

This memorandum summarizes public feedback received to date for the 2018 Billings Urban Area Long Range Transportation Plan (LRTP). Public comments were collected through middle school outreach, an online survey and a public open house in May 2018.

INTRODUCTION

The Yellowstone County Metropolitan Planning Organization (MPO) conducted a public outreach effort in order to introduce the LRTP and collect feedback on goals, objectives and needs. Outreach efforts included:

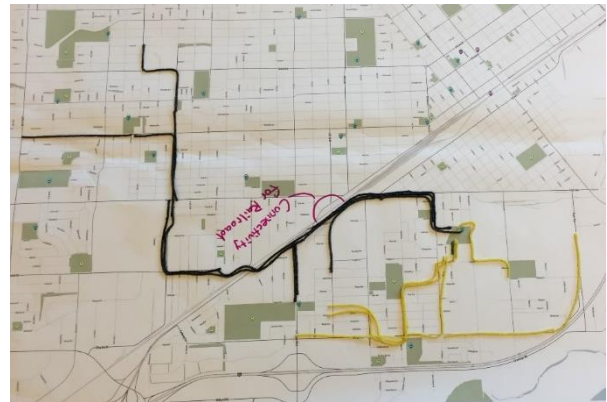
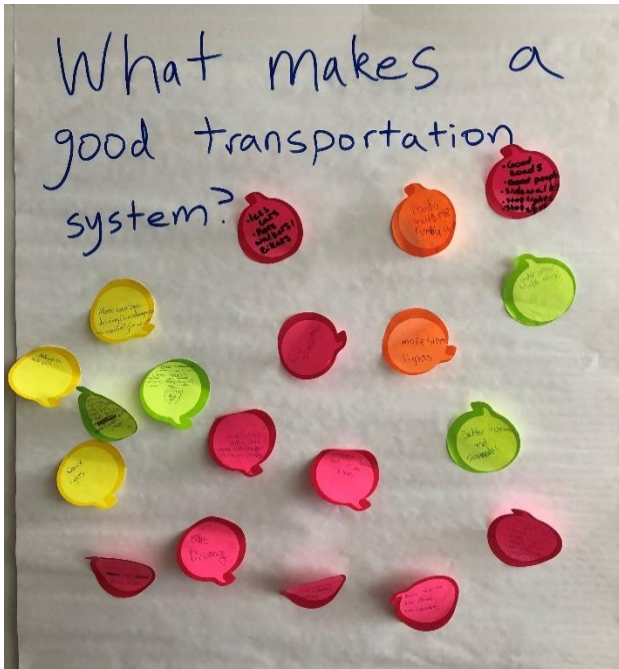
- Riverside Middle School classroom outreach
- Public open house
- Online survey

MIDDLE SCHOOL OUTREACH

Kittelson & Associates, Inc. (Kittelson) presented to three classes (two geography classes and one social studies class) at the Riverside Middle on Tuesday May 15th, 2018. These three classes included approximately 50 students. Kittelson presented information on transportation planning and then asked the students to map how they traveled to school and to after school or weekend activities. The students mapped the routes they took, and color coded them by what mode of transportation they used (see images on next page). The students then discussed issues about these routes. Next the students were asked “What makes a good transportation system?”. They wrote these ideas down on sticky notes



and placed them on a board for group discussion (see comment example below). These notes were also presented at the public open house.



Their ideas for a good transportation system included (for detailed comments from this outreach refer to Appendix A), but not limited to:

- More sidewalks
- Improve sidewalks
- Test drivers every 20 years
- Hoverboard
- Fix potholes
- More buses
- Better signal timing

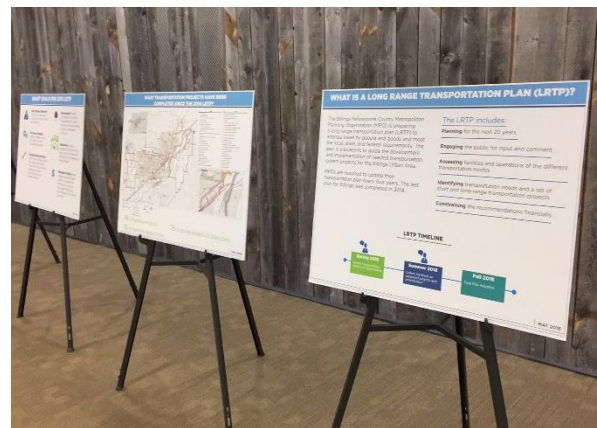


PUBLIC OPEN HOUSE

The public open house was held at the Billings Library from 4 pm to 7 pm. The purpose of the open house was to give the public an opportunity to learn about the plan, review technical information about the LRTP, and provide comment on the following three items:

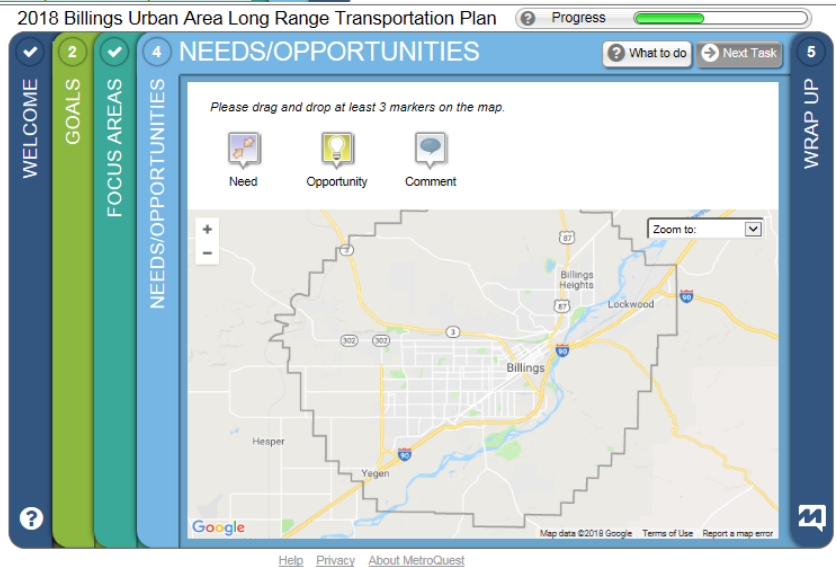
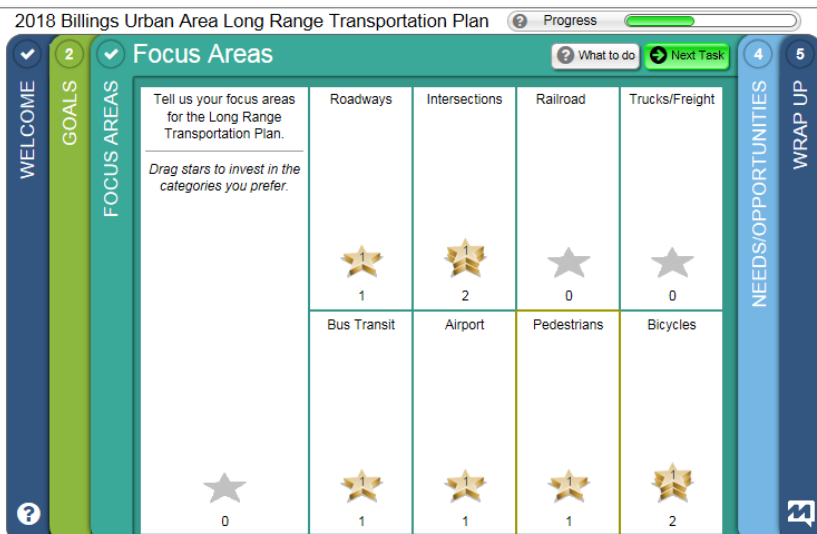
- What goals are most important to you for the plan?
- What transportation needs and opportunities exist today?
- What you like to see for the future transportation system?

Attendees were able to review materials on the LRTP, provide mapped comments regarding needs and opportunities, and provide feedback on goals and focus areas. 25 people signed into the meeting, 32 map comments were received and three comment sheets. Appendix B includes the open house display boards. Appendix C includes the completed comment sheets from the open house. Appendix D includes the sign-in sheet from the open house.



ONLINE SURVEY

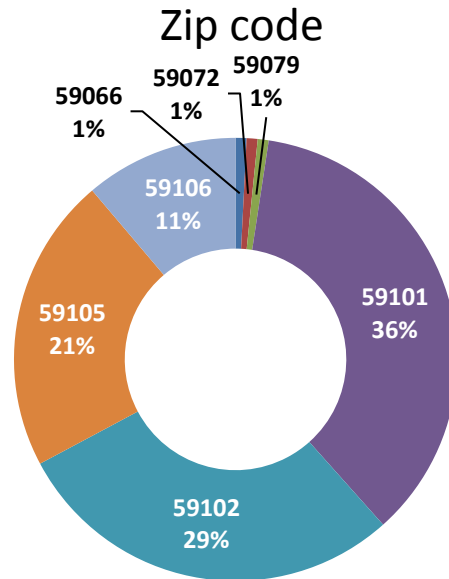
An online survey was developed to provide information on the LRTP, collect feedback on goals, priorities and allow users to map their comments regarding needs and deficiencies. The same questions were asked on the survey as at the public open house. The online survey ran from May 14th to May 29th and had 139 participants. The site is no longer active, but the demo site can be viewed at: <https://2018BillingsLRTP-demo.metroquest.com>



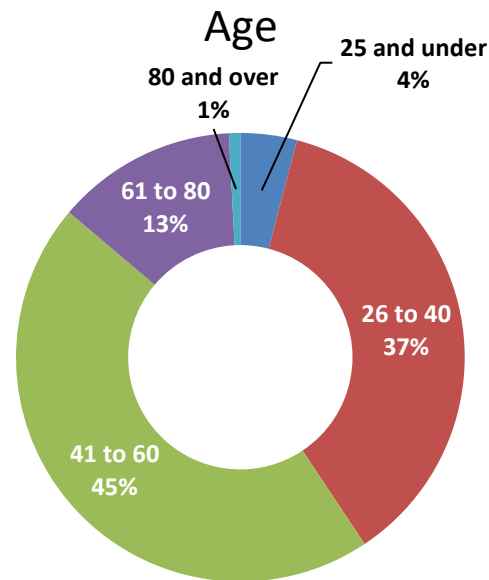
COMMENT SUMMARY

DEMOGRAPHICS

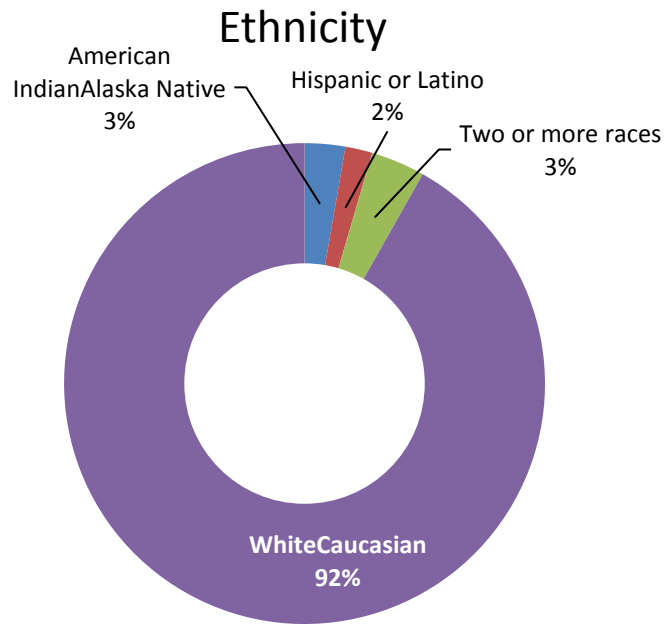
1) What zip code do you live in?



2) What is your age?



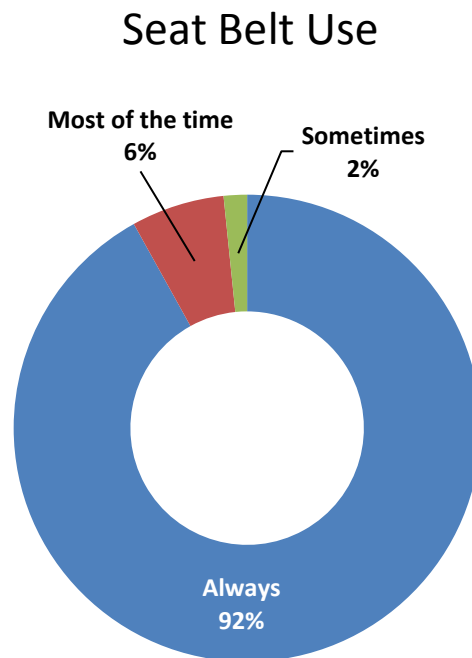
3) What is your ethnicity?



US Census Data Demographics for Yellowstone County

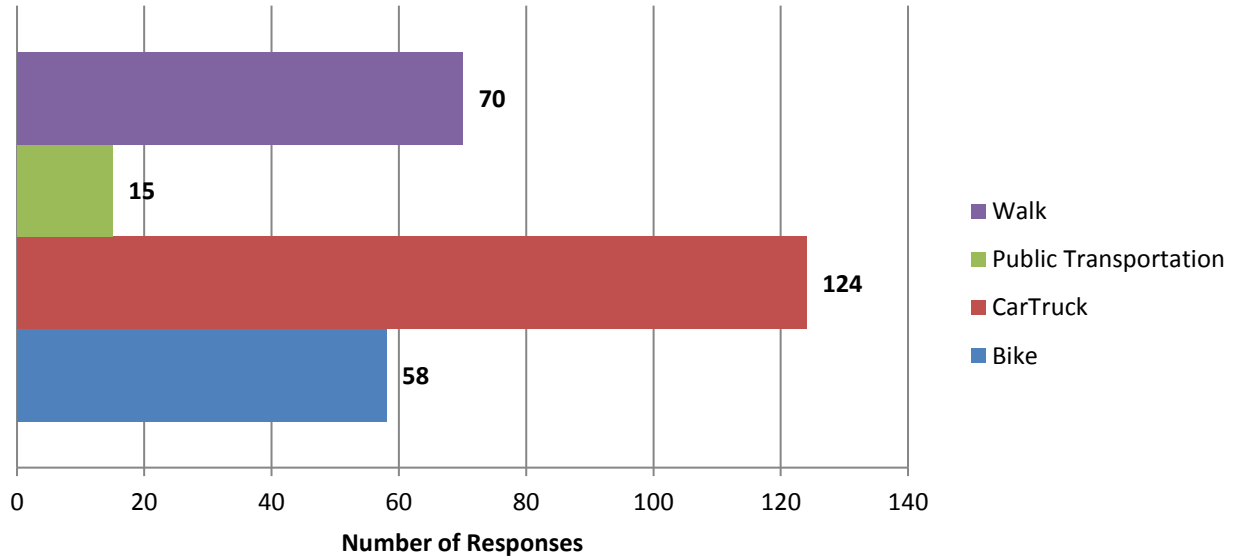
White/Caucasian:91% | American Indian/Alaska Native:4.6% | Hispanic or Latino:5.5% | Two or more races:2.9%

4) How often do you wear a seat belt?



5) What mode of transportation do you use (check all)?

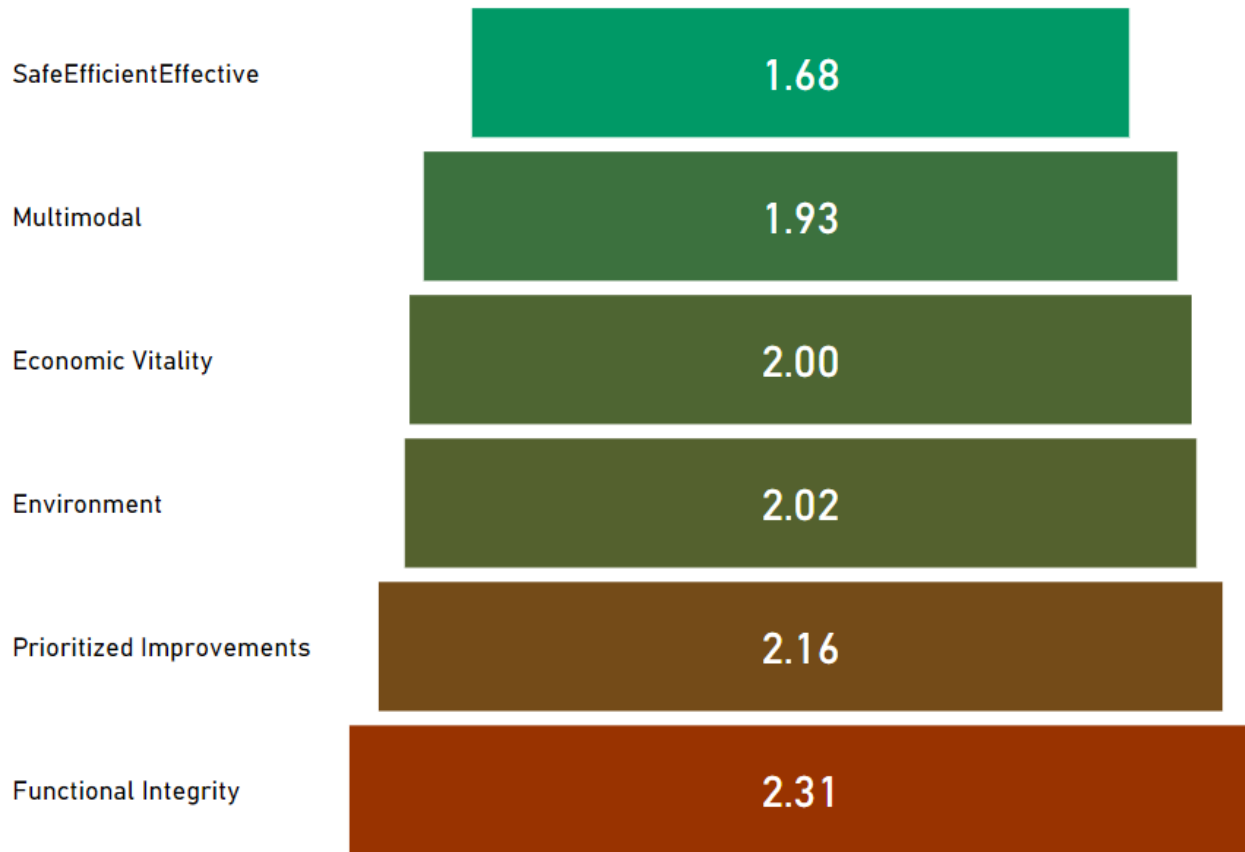
Mode of Transportation



GOALS

Prioritizing goals helps the MPO guide future project prioritization. Survey respondents were asked to rank their top 3 transportation goals.

- **Safe, Efficient, Effective:** Develop a transportation system that is safe, efficient, and effective
- **Functional Integrity:** Optimize, preserve, and enhance the existing transportation system
- **Prioritized Improvements:** Identify and prioritize projects that mitigate deficiencies, maximize the use of existing facilities, and balance anticipated needs with available funding
- **Environment:** Develop a transportation system that protects the natural environment and promotes a healthy, sustainable
- **Multimodal:** Create a transportation system that supports the practical and efficient use of all modes of transportation
- **Economic Vitality:** Ensure adequate transportation facilities to support the existing local economy and connect Billings to local, regional, and national commerce



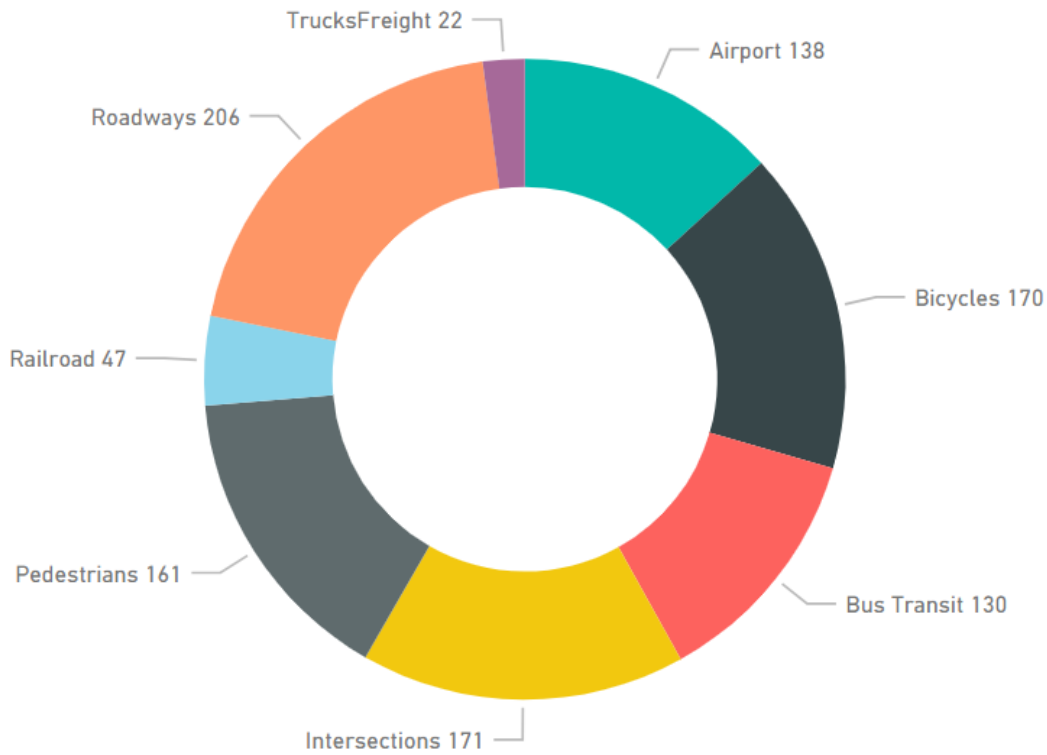
* Note that the highest rank is 1, so small rankings and averages are better than high ones.

FOCUS AREAS

Survey respondents were asked to identify their focus areas for the Billings Urban Area Long Range Transportation Plan.

- Roadways
- Intersections
- Railroad
- Truck/Freight
- Bus/Transit
- Airport
- Pedestrians
- Bicycles

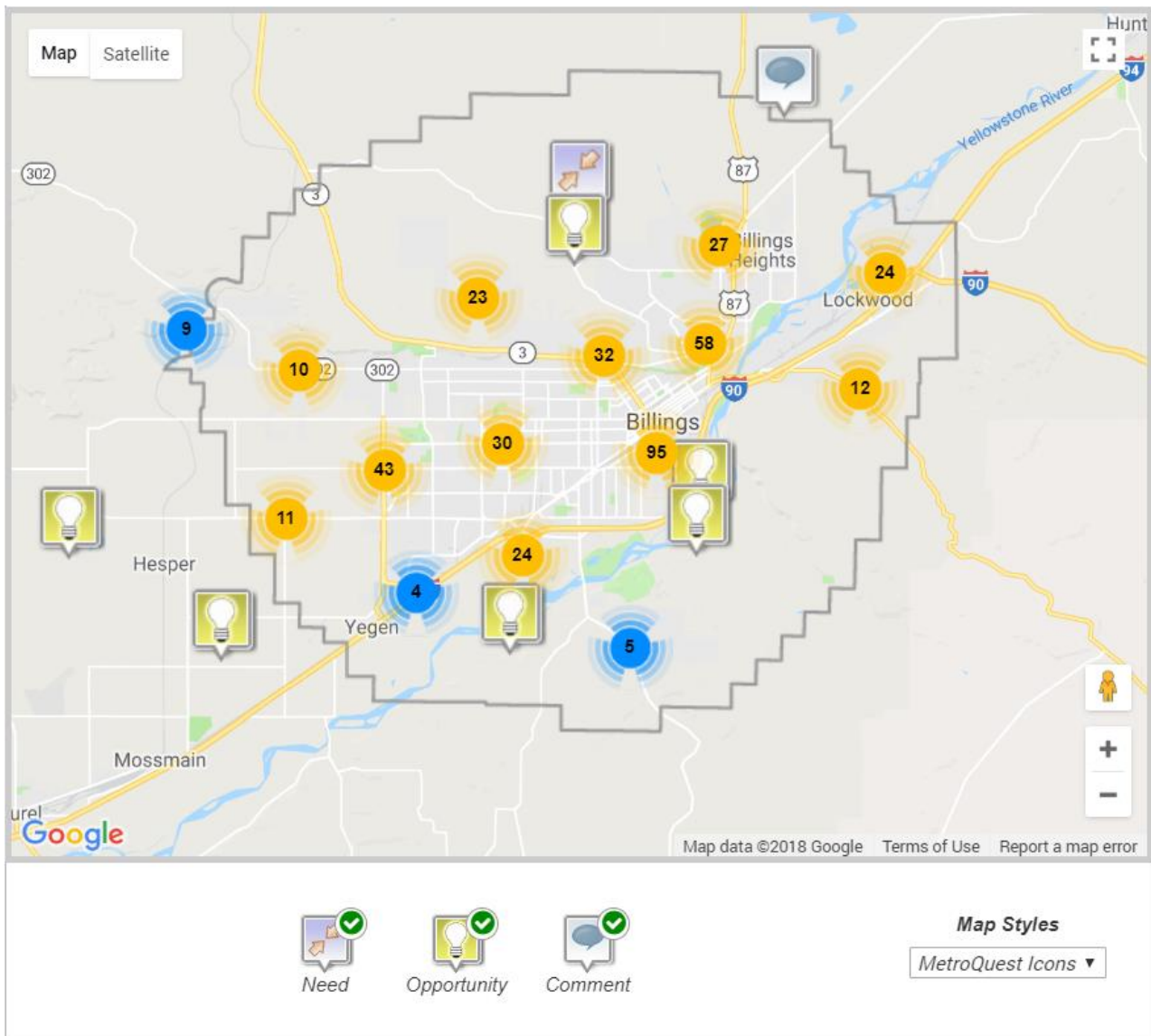
The chart on the next page summarizes the number of chips/coins dropped into a focus area. The focus areas with the most chips/coins were roadways, intersections, and bicycles followed by pedestrians, airport, and bus transit followed by railroad and truck/freight.



NEEDS AND OPPORTUNITIES

Survey respondents were asked to use the map to tell us about needs and opportunities with the existing transportation system in the Billings Urban Area. A spreadsheet of these comments is included in Appendix E. In total, 418 map comments were provided by respondents, which fell into the following categories: 89 general comments, 103 comments on opportunities, and 226 comments on needs. The map on the next page provides a snapshot of where comments were provided within the study area.

Kittelson is evaluating the comments in more detail for further use in the development of the project list for the LRTP. In short, the comments, needs and opportunities included a range of issues and project types, including but not limited to pedestrian crossings, bicycle facilities, more bus frequency, at-grade railroad crossings enhancements, roadway extensions, new roadway connections from Highway 3 to the Interstate, and intersection enhancements.



Appendix A Middle School Outreach
Comments - What Makes a
Good Transportation System?

Middle School Comments – What Makes a Good Transportation System?

1. More bridges over train track
2. More sidewalks
3. More sidewalks
4. Hoverboards
5. Good Roads
6. Good Drivers
7. More plows
8. More and better drains
9. Better sidewalks
10. More sidewalks
11. Less traffic
12. Using less non-renewable sources
13. Less red light running
14. Better safety at intersections
15. Bike paths
16. Better passage ways
17. More alternate routes
18. Flying cars
19. More available ride services
20. More available ride services
21. Better sidewalks
22. Not having to worry about getting hit
23. Underground walk ways
24. Feeling safer
25. Sidewalks in more places
26. A driving test every 20 years
27. Less Cars
28. More walkers, bikers
29. Safer neighborhoods
30. More street lights
31. Transit
32. Less potholes
33. More drains
34. Stop Signs
35. Safety/Personal Safety
36. Less drunks
37. More than one way to get somewhere
38. Subway trains
39. Road maintenance
40. Transportation out of town
41. Sidewalks
42. Pedestrian Crossings
43. Train Crossings
44. Crosswalks and more bike roads
45. Busses coming more
46. Less cars
47. More cautious driving (less dangerous especially in the winter)
48. Drivers that aren't from Billings
49. Less expensive
50. Guardrails and rumble strips
51. Better draining system
52. Slow down signs near neighborhoods
53. More sidewalks
54. Stop Signs
55. Quick lights
56. No major traffic
57. More routes to places
58. accessible
59. Safe (lots of stop signs)
60. Sidewalks
61. Better crosswalks and sidewalks

62. Signs that say "yield to pedestrians"
63. Less drunks
64. Better roads
65. Good Roads
66. Good people
67. Sidewalks
68. Stop lights
69. Stop Signs
70. Less crammed streets
71. bike lanes
72. Good roads
73. No pot holds
74. Stop signs
75. Stop lights
76. Safe driving
77. Good sidewalks
78. Less rocks
79. More stop signs
80. Fixed roads
81. More sidewalks
82. Better sidewalks
83. Less cars
84. Some people can ride bikes
85. Helicopters and jets
86. Safer old drivers
87. Less pot holes so my head doesn't hit
the car roof
88. Heated roads
89. Moving sidewalks
90. Teleportation
91. More careful drivers
92. No drunk drivers
93. Stop lights that don't change when no
one is there
94. Better stop lights
95. Calm streets
96. Safe sidewalks
97. More crosswalks
98. I want to see more bike lanes

Appendix B Public Open House #1
Display Boards

WELCOME!

Thank you for attending tonight's open house for the Billings Urban Area Long Range Transportation Plan. The purpose of this open house is to give you an opportunity to learn about the plan, review technical information, and provide comment on the following three items:

- What goals are most important to you for the plan?
- What transportation needs and opportunities exist today?
- What would you like to see for the future transportation system?

Who Is Involved?



The primary sounding board is the Steering Committee (SC), which includes representatives from the above agencies. Public involvement is a major contributor to the plan development.

The consultant team for the project includes Kittelson & Associates, Inc. and DOWL.



WHAT IS A LONG RANGE TRANSPORTATION PLAN (LRTP)?

The Billings-Yellowstone County Metropolitan Planning Organization (MPO) is preparing a long range transportation plan (LRTP) to address travel by people and goods and meet the local, state, and federal requirements. The plan is a blueprint to guide the development and implementation of needed transportation system projects for the Billings Urban Area.

MPOs are required to update their transportation plan every four years. The last plan for Billings was completed in 2014.

The LRTP includes:

Planning for the next 20 years

Engaging the public for input and comment

Assessing facilities and operations of the different transportation modes

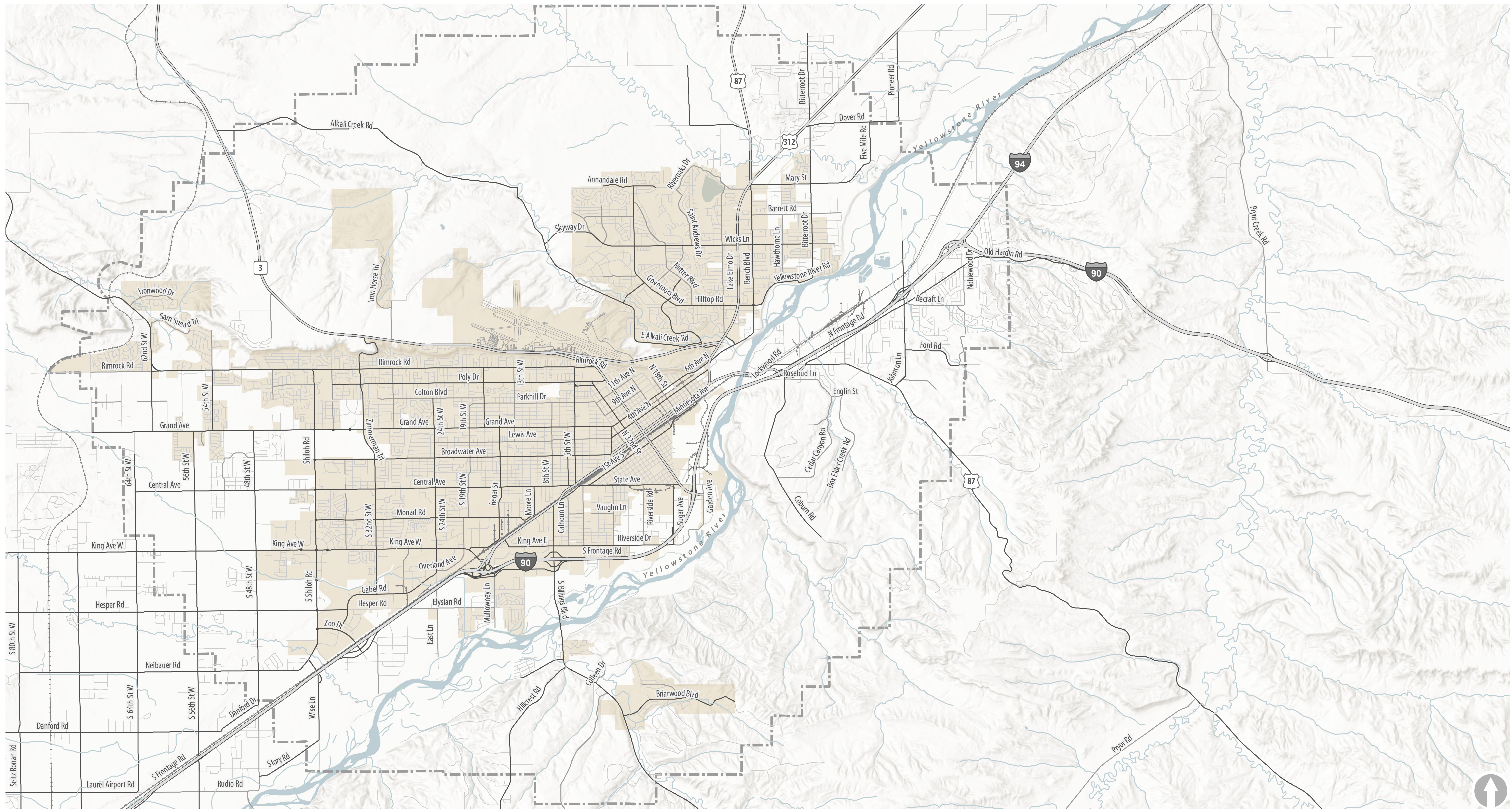
Identifying transportation needs and a set of short and long-range transportation projects

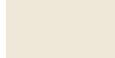
Constraining the recommendations financially

LRTP TIMELINE



STUDY AREA



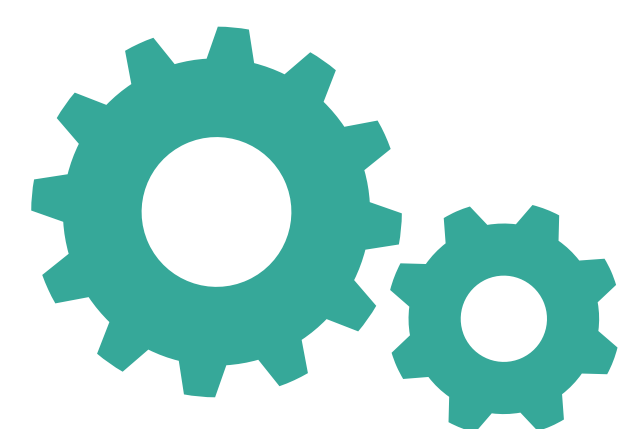
Study Area  City of Billings

DRAFT GOALS FOR 2018 LRTP



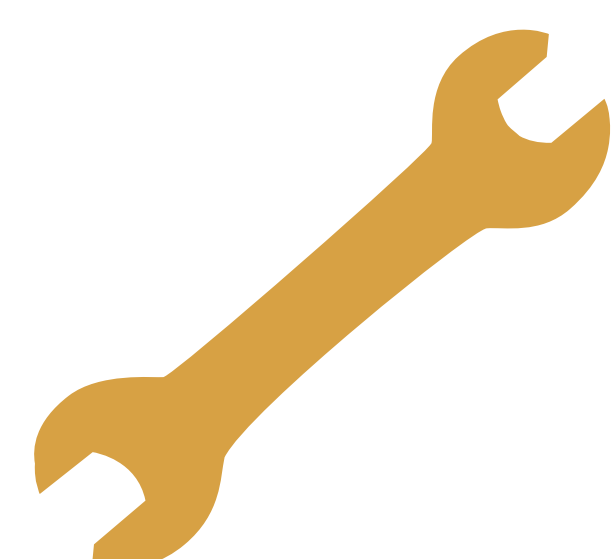
Safe, Efficient, Effective

Develop a transportation system that is safe, efficient, and effective



Functional Integrity

Optimize, preserve, and enhance the existing transportation system



Prioritized Improvements

Identify and prioritize projects that mitigate deficiencies, maximize the use of existing facilities, and balance anticipated needs with available funding



Environment Develop a transportation system that protects the natural environment and promotes a healthy, sustainable community

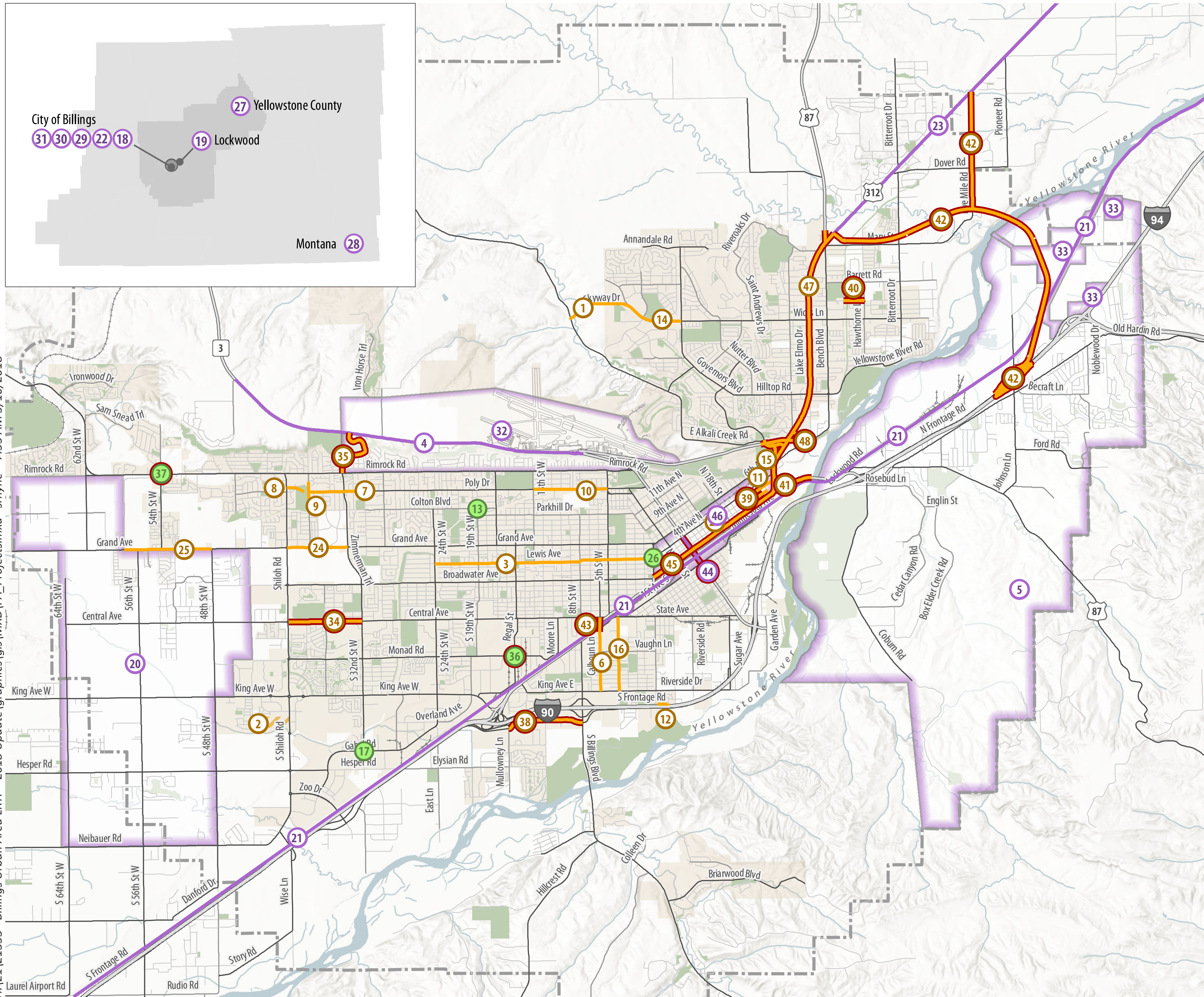
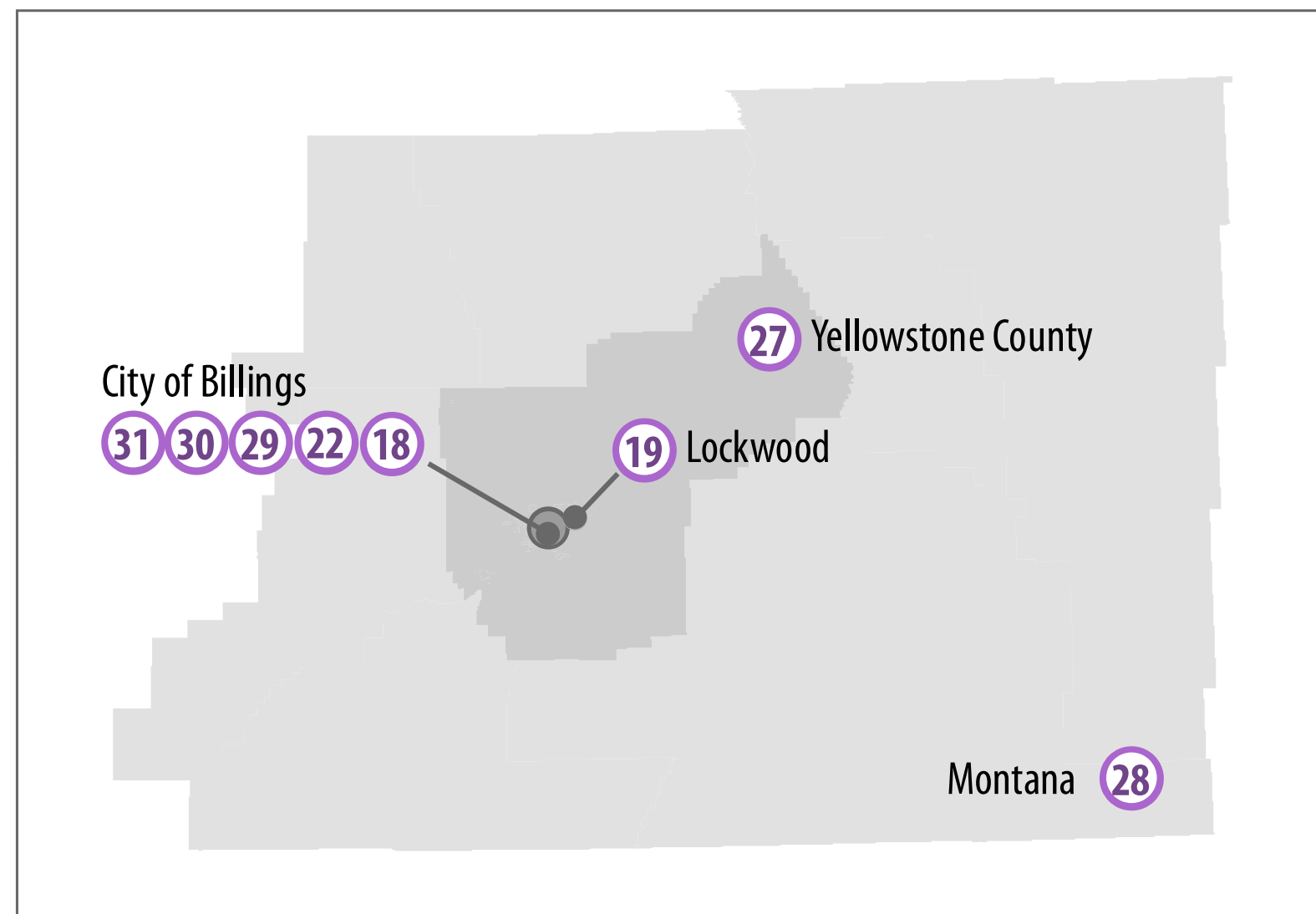


Multimodal Create a transportation system that supports the practical and efficient use of all modes of transportation



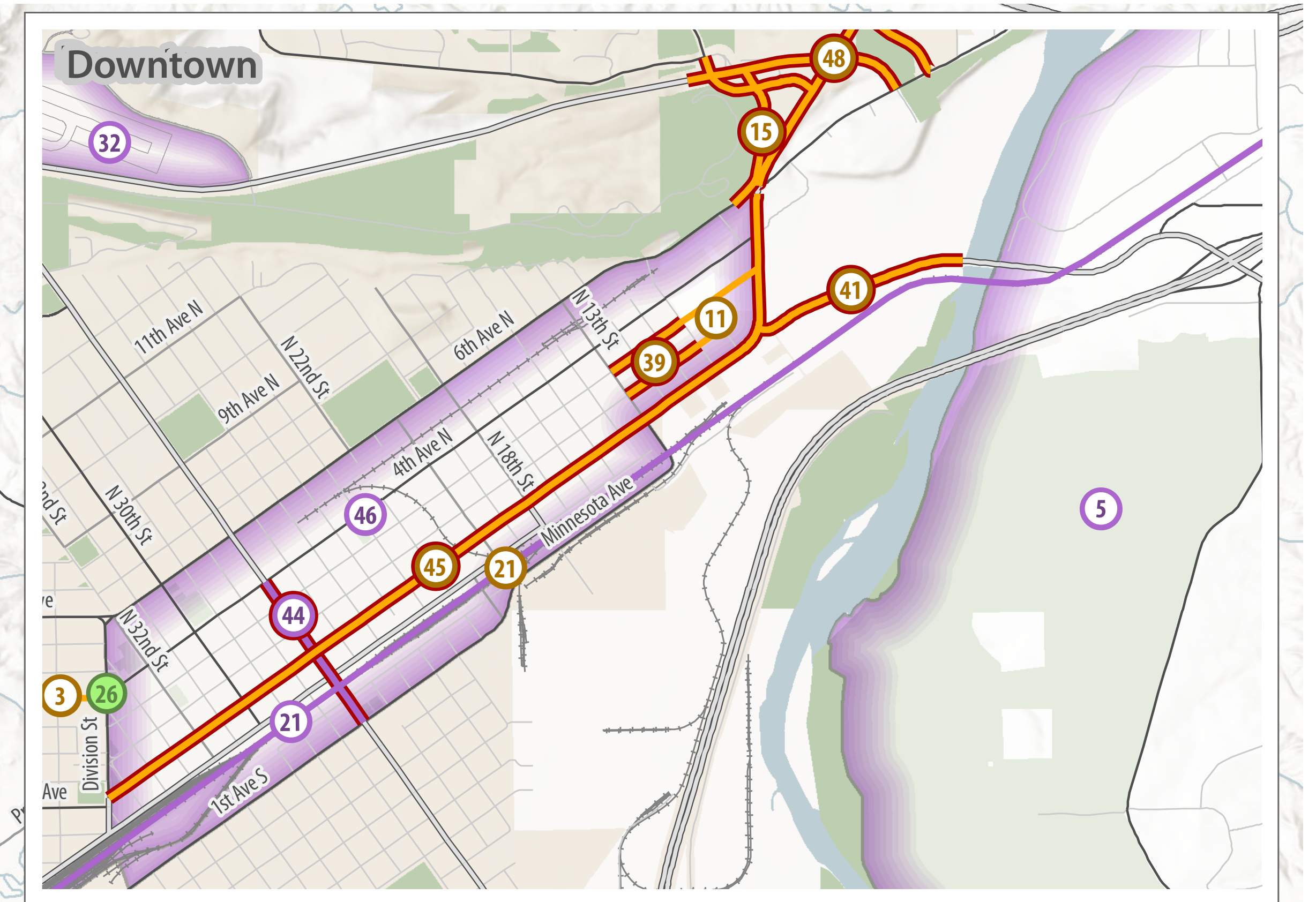
Economic Vitality Ensure adequate transportation facilities to support the existing local economy and connect Billings to local, regional, and national commerce

WHAT TRANSPORTATION PROJECTS HAVE BEEN COMPLETED SINCE THE 2014 LRTP?



ID	Name
1	Inner Belt Loop Phase 1
2	Shiloh Conservation Area (Trail)
3	Lewis Avenue Bike Lanes (24th Street W to Division Street)
4	Highway 3 Corridor Study
5	Non-Motorized Transportation Plan
6	Calhoun Lane (King East to Underpass Avenue)
7	Poly Drive (32nd Street W to 38th Street W)
8	Arrowhead Trail (Arrowhead Elementary School to Shiloh Road)
9	Poly Drive School Sidewalks
10	Poly Drive/Virginia Lane Traffic Signal Reconstruction & Bike Lanes (Poly from Virginia to 13th St W)
11	Exposition Gateway (2nd & 3rd Ave N from Main Street to N. 10th)
12	Ponderosa Trail
13	19th St W & Colton School Crossing
14	Wicks Lane Trail (Siesta to Governors)
15	Swords Park Outlet Trail (Aronson to 6th Ave N)
16	Orchard Lane (King East to State Ave)
17	Gabel Road & 32nd Street West Traffic Signal
18	City of Billings Growth Policy
19	Lockwood Growth Policy
20	West End Multimodal Planning Study
21	Montana Rail Grade Separation Study
22	Billings Community Transportation Safety Plan
23	Old Highway 312 Corridor Study
24	Grand Avenue Widening (32nd Street West to Shiloh Road)

ID	Name
25	Grand Avenue (48th to 58th Streets West)
26	4th Ave N & Division Street Signal Reconstruction
27	Billings-Yellowstone Household Travel Survey
28	TranPlanMT
29	Billings Area Bikeways + Trails Master Plan Update
30	City of Billings Complete Streets Progress Report
31	City of Billings Comprehensive Parks and Recreation Master Plan
32	Rims to Valley Bike-Pedestrian Feasibility Study
33	Targeted Economic Development District (TEDD)
34	Central Avenue (32nd St W to Shiloh Road)
35	Zimmerman Trail (Rimrock Road to Hwy 3)
36	Monad & Daniel Traffic Signal
37	Rimrock & 54th St W Traffic Signal
38	Midland Road (S. Billings Blvd. to Mullooney Ln)
39	EBURD Reconstruct (2nd & 3rd Ave N from N. 13th to N. 10th)
40	Kyhl Lane (BBWA to Hawthorne)
41	1st Avenue North & Exposition Drive
42	Billings Bypass Arterial
43	Underpass Avenue Improvements
44	27th Street Railroad Crossing Study
45	1st Avenue North Billings
46	Billings Downtown Traffic Study
47	Main Street Signal Timing
48	Airport & Main Intersection



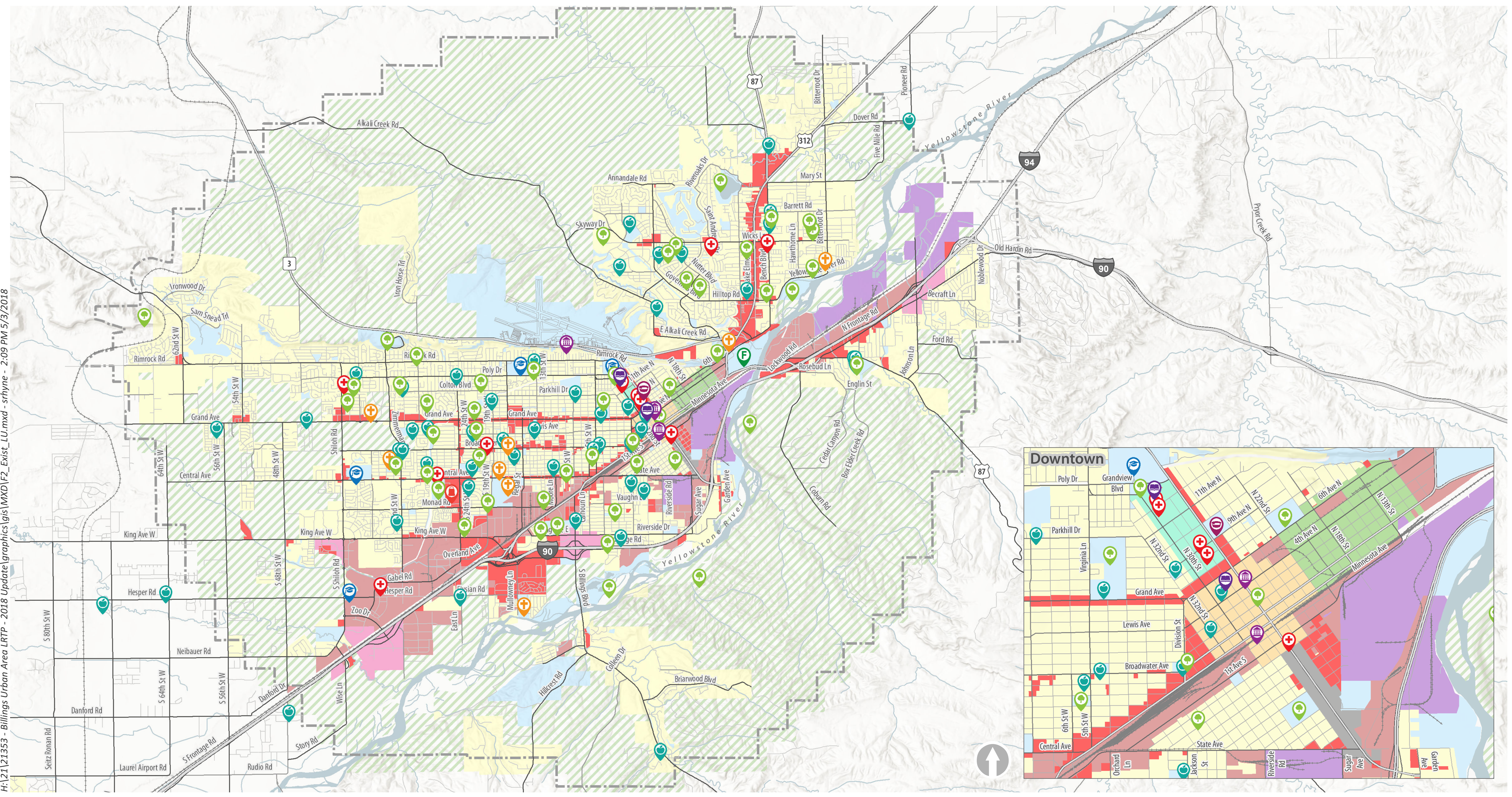
18 completed projects

15 Ongoing projects/studies/plans

15 completed studies/plans

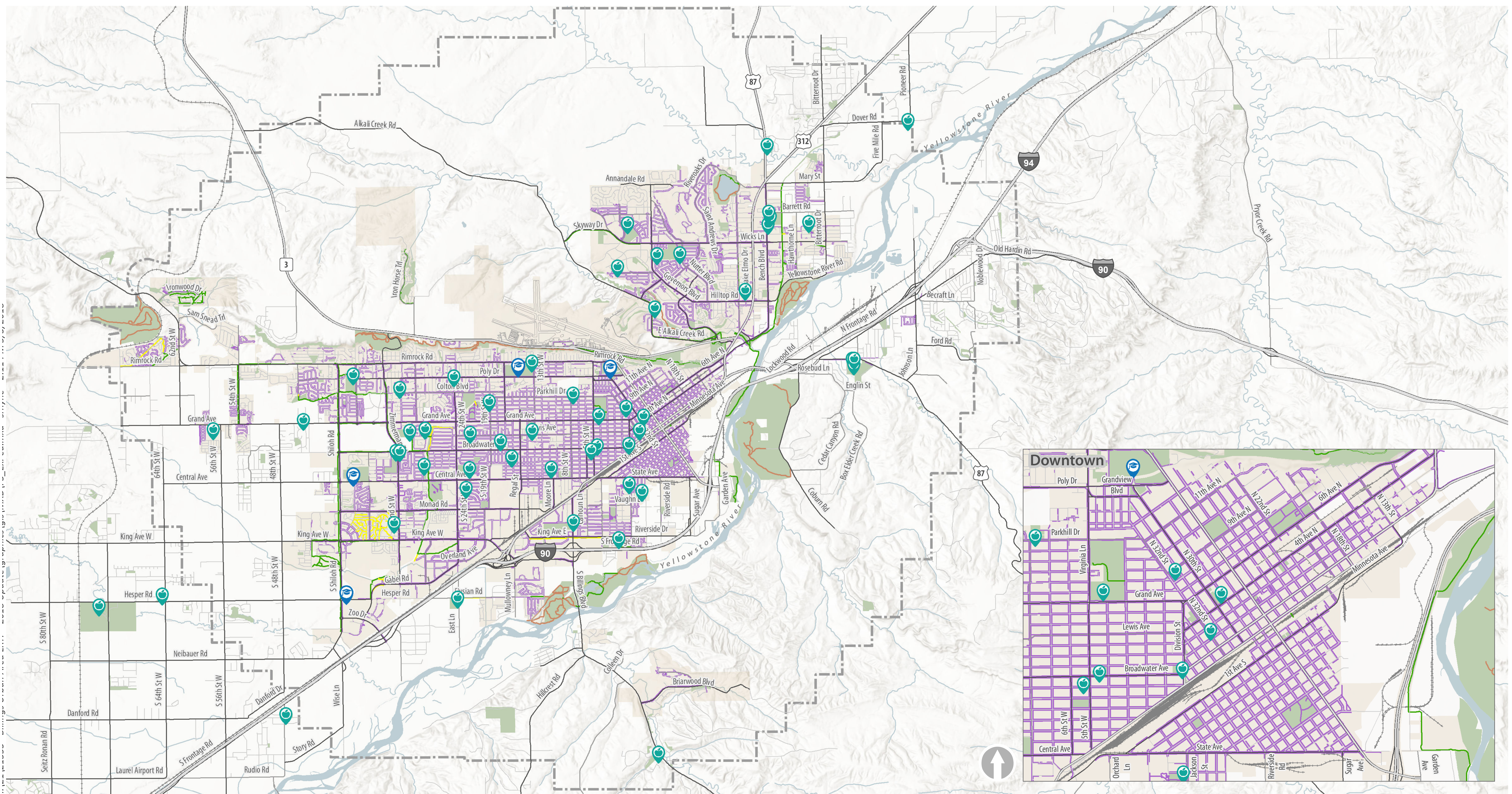
EXISTING LAND USE

HI:12121353 - Billings Urban Area LRTP - 2018 Update (graphics) [MXD] [F2_Exist_LU.mxd - srhyme - 2:09 PM 5/3/2018]



- | | | | | | | | | | |
|---------|---------------|---------|-------------|----------|-----------------------|---------------------------|------------------|-------------------------------------|------------|
| College | Shopping Mall | Stadium | Fairgrounds | Cemetery | Residential | Central Business District | Light Industrial | Entryway | Study Area |
| Schools | Museum | Library | Park | Hospital | Commercial | Medical Corridor Permit | Heavy Industrial | South 27th Street Corridor | |
| | | | | | Commercial/Industrial | Public | Agricultural | East Billing Urban Renewal District | |

EXISTING PEDESTRIAN AND TRAIL FACILITIES



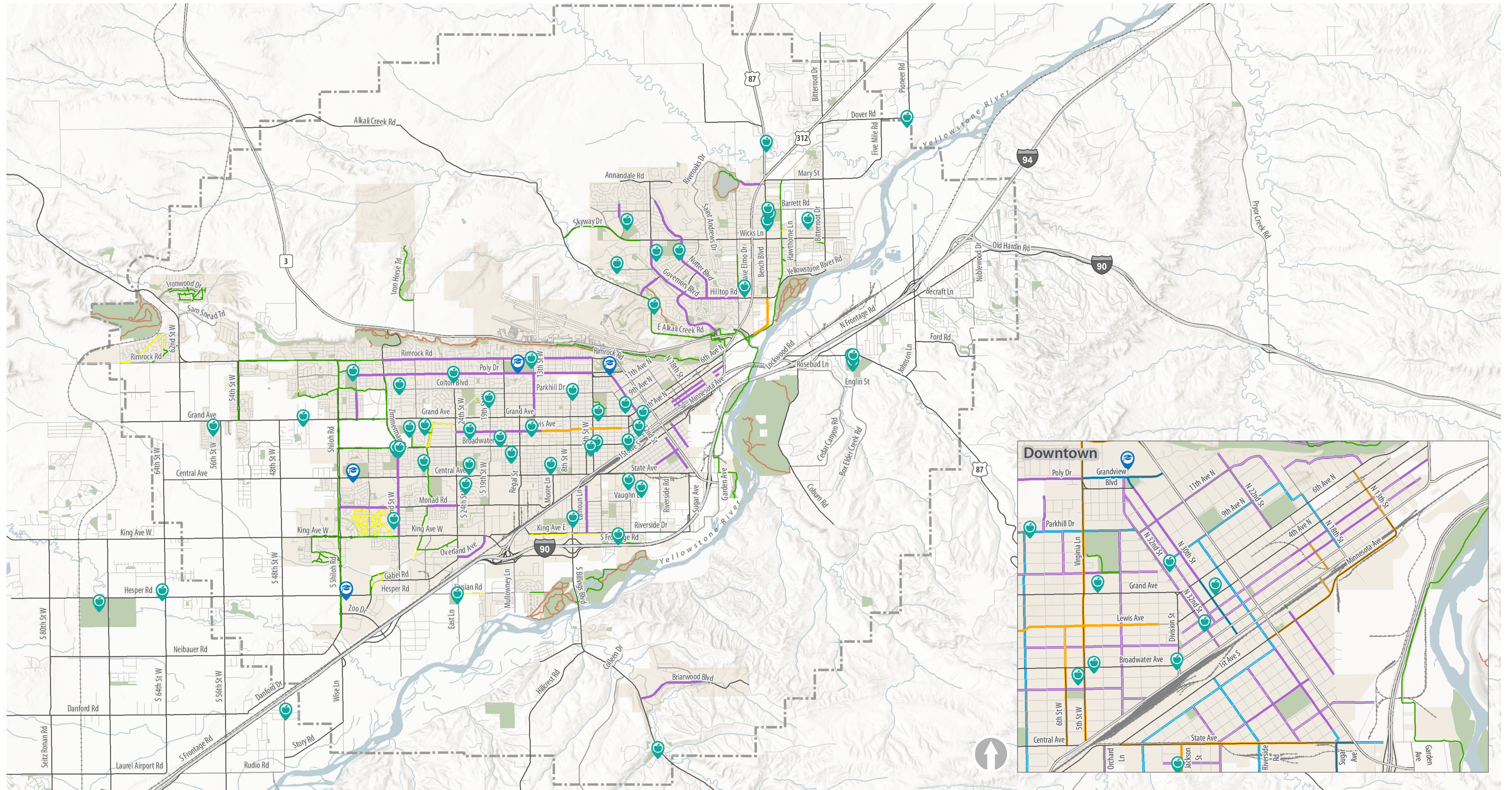
45 Miles of shared use paths

660 Miles of sidewalks

3.3% Billings residents commute by walking*

11 Miles of neighborhood trails

EXISTING BIKEWAYS AND TRAIL FACILITIES



- Bike Lane
- Shared Use Path
- Shared Lane Marking
- Neighborhood Trail
- Unpaved Trail
- College
- Schools
- Study Area
- City of Billings
- Park

26 Miles of bike lanes

2.6 Miles of shared lanes

11 Miles of neighborhood trails

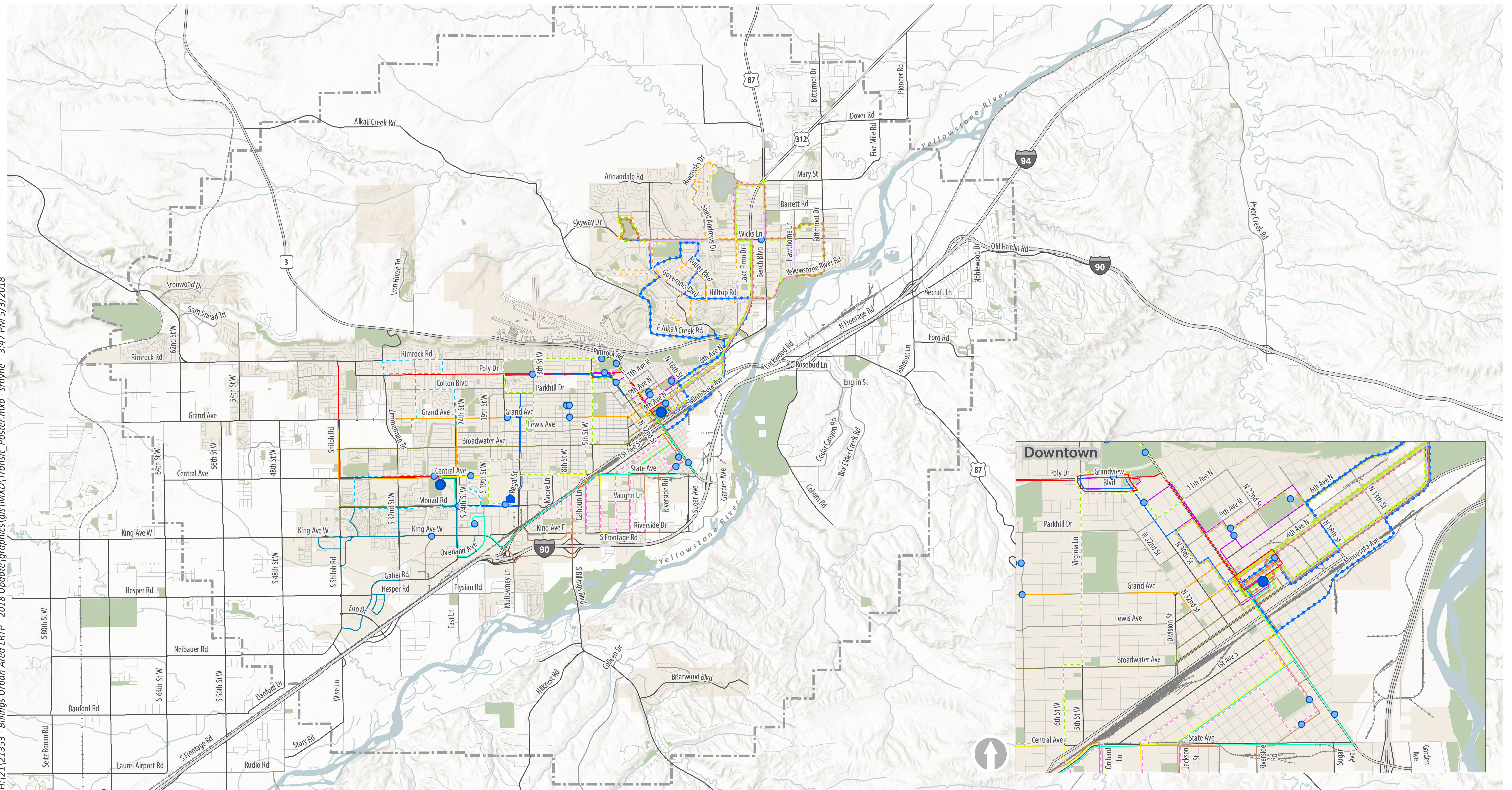
45 Miles of shared use paths

1% Billings Residents Commute by bike*

*2010-14 ACS Data

EXISTING BUS ROUTES

H:\121121353 - Billings Urban Area LRTP - 2018 Update\graphics\gis\Transit\Poster_mxd - srhnye - 3:47 PM 5/3/2018



* Bus services operating on Saturday

18 Routes

1% Billings Residents Commute by bus*

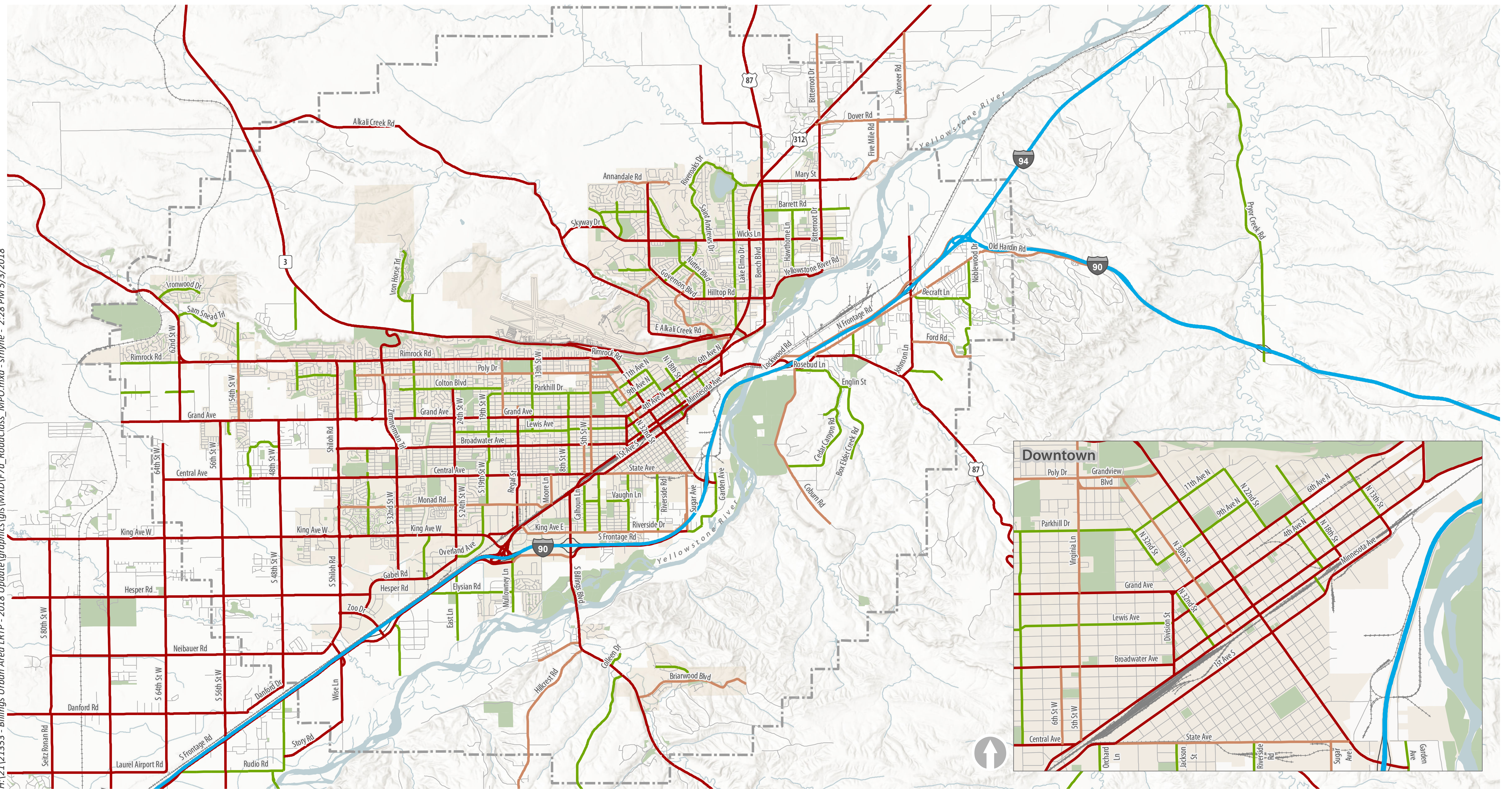
5:50a-6:50p Weekday hours

8:10a-5:45p Saturday hours

*2010-14 ACS Data

EXISTING ROADWAY FUNCTIONAL CLASSIFICATION

H:\12121353 - Billings Urban Area LRTP - 2018 Update\graphics\gis\MXD\F7a_RoadClass_MPO.mxd - sryne - 2:28 PM 5/3/2018



- | | | |
|-------------------------------|----------------|------------------|
| Roadway Classification | Minor Arterial | Study Area |
| Interstate | Collector | Park |
| Principal Arterial | Local Streets | City of Billings |

970 Miles of roads

18 Roundabouts

173 of signalized intersections

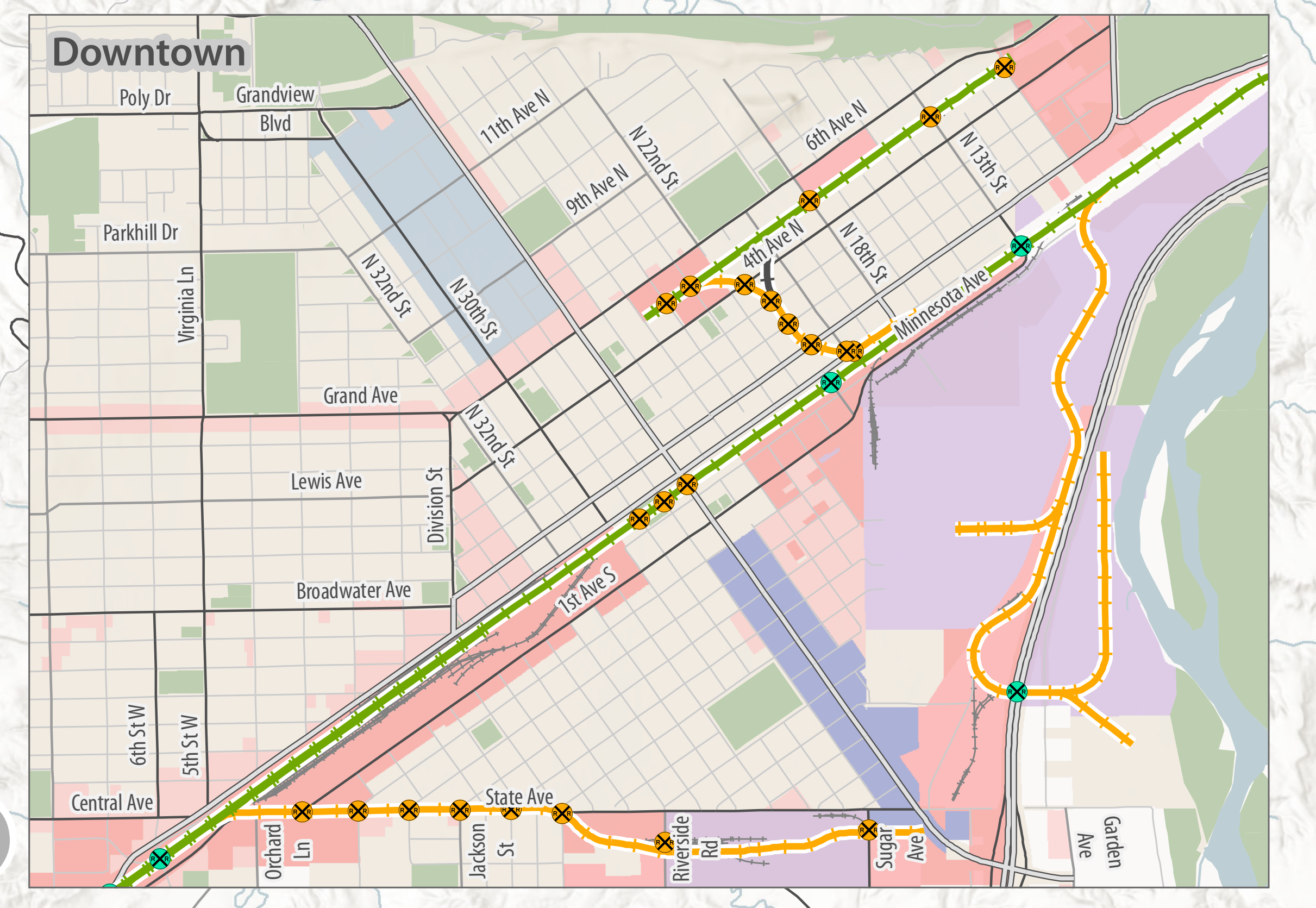
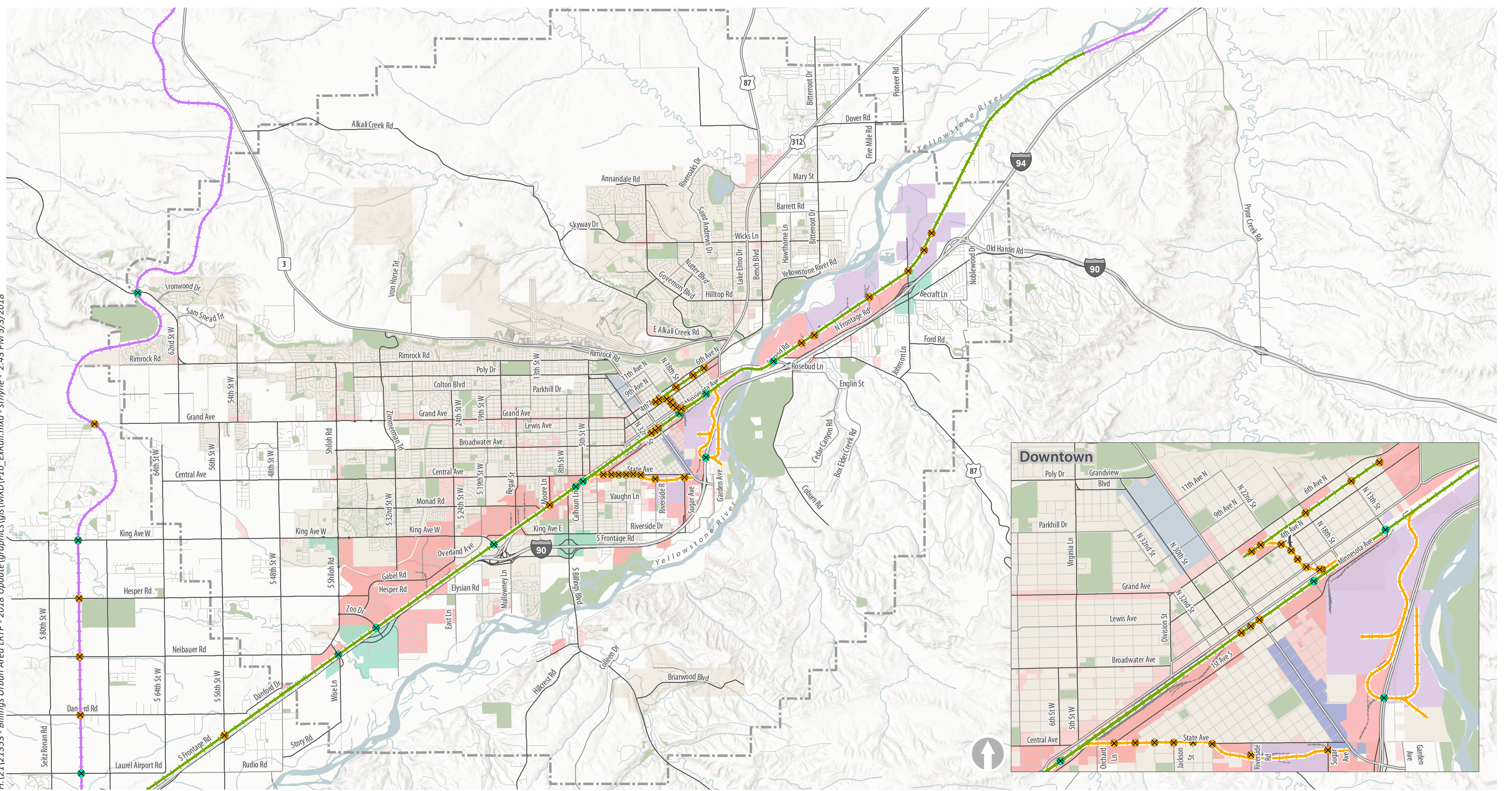
Freeways serve high speed, long distance travel movements and provide limited access to adjacent lands.

Arterials serve higher volumes of traffic, particularly through-traffic, at higher speeds.

Collectors carry locally generated traffic at lower speeds.

EXISTING RAILROAD FACILITIES

H:\21121353 - Billings Urban Area LRTP - 2018 Update\graphics\lgs\MMD\F10_Extra\mxd - srfhne - 2:43 PM 5/3/2018



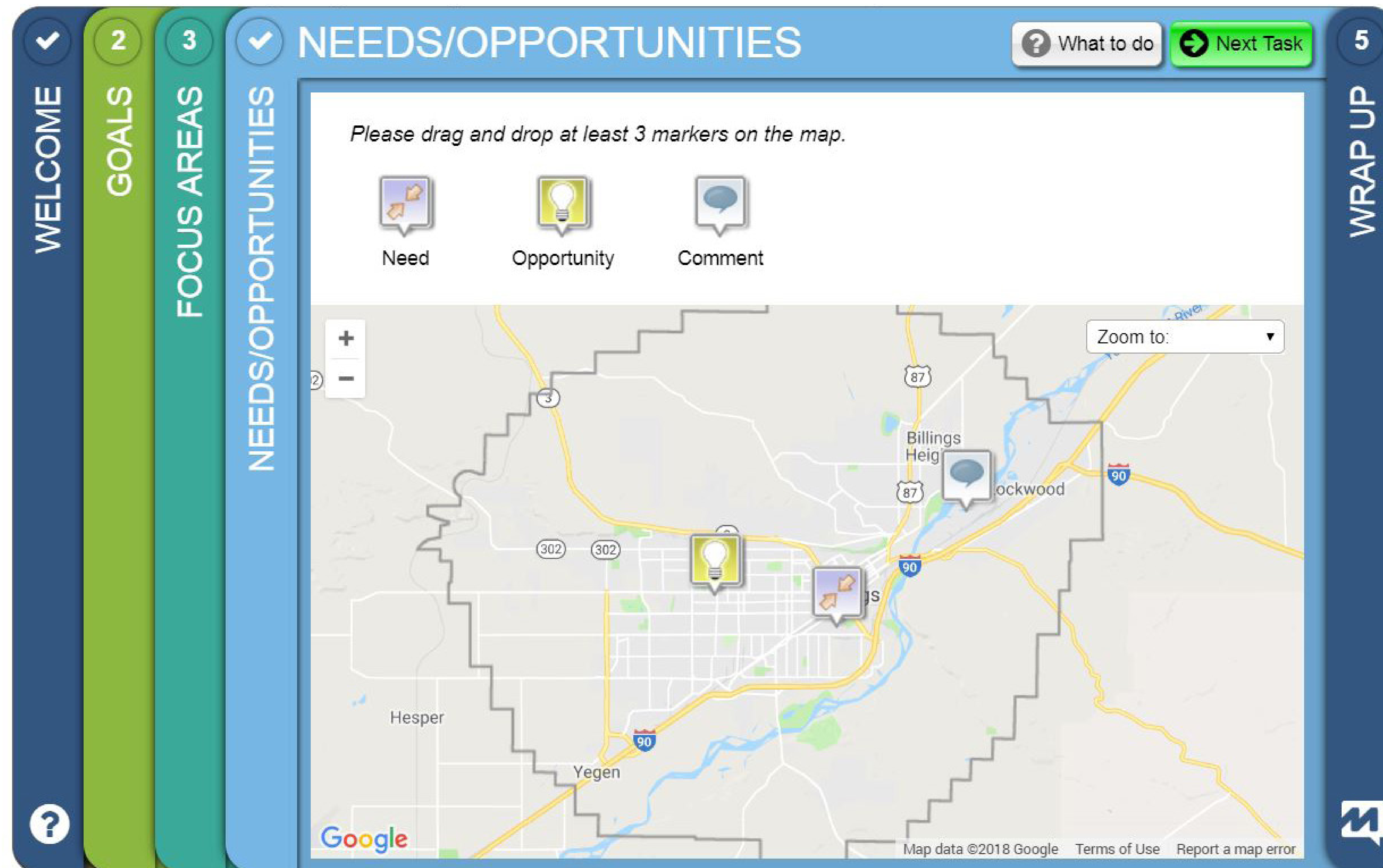
- | | | | | |
|--------------------------|------------------------------|------------|-----------------------|----------------------------|
| At Grade Crossing | Burlington Northern Santa Fe | Study Area | Commercial | Medical Corridor Permit |
| Grade Separated Crossing | Montana Rail Link | Park | Commercial/Industrial | South 27th Street Corridor |
| Spur | | | Heavy Industrial | Entryway |
| | | | Light Industrial | City of Billings |

36 at-grade railroad crossings 12 grade-separated railroad crossings

HELP US IDENTIFY THE TRANSPORTATION NEEDS AND OPPORTUNITIES

Based on your understanding of the transportation system, please use the numbered stickers and map to identify the location of needs and opportunities.

Additionally, we have an interactive survey tool (screen shot below) set-up on the iPad that you can use to identify needs and opportunities.



HELP US IDENTIFY THE FUTURE TRANSPORTATION VISION FOR THE BILLINGS-URBAN AREA

In the next phase of the LRTP, a short- and long-range project list will be identified to address current and future transportation needs. This project list will be financially constrained. To assist the project team in identifying the vision and project priorities, please use your comment sheet to identify the three areas that are most important to you.



Roadways



Trucks/Freight



Pedestrians



Intersections



Bus Transit



Bicycles



Railroad



Airport

NEXT STEPS

Stay Involved

- Sign up on the “Notify Me” list on the City’s website: <http://ci.billings.mt.us/>
- Attend future public meetings
- Check back frequently for updates on our project website at www.billingslrtp.com
- Provide comments via our interactive web map survey: <http://maps.kittelson.com/billingslrtp>
- Contact **Scott Walker** (MPO) at 406.657.8246 or via email at walkers@ci.billings.mt.us

What is Next?

- Summarize comments from Public Informational Meeting #1
- Develop and analyze year 2040 conditions
- Prepare a draft list of short and long range projects
- Present materials at Public Informational Meeting #2 (September 2018)
- Prepare draft plan for review and comment

All displays and handouts from tonight will be posted on the project website at www.billingslrtp.com for review and comment.

Thank you for participating!

Appendix C Public Open House #1
Comment Sheets

What zip code do you live in? 59101

What modes of transportation do you use? (check all that apply)

- Car/Truck/Motorcycle
- Bike
- Walk
- Public Transportation
- Other: _____



Goals

Prioritizing goals helps the MPO guide future project prioritization.

Please rank your top 3 transportation goals.

Rank Top 3 (1, 2, 3)	Goal
	Safe, Efficient, Effective: Develop a transportation system that is safe, efficient, and effective
	Functional Integrity: Optimize, preserve, and enhance the existing transportation system
	Prioritized Improvements: Identify and prioritize projects that mitigate deficiencies, maximize the use of existing facilities, and balance anticipated needs with available funding
	Environment: Develop a transportation system that protects the natural environment and promotes a healthy, sustainable
	Multimodal: Create a transportation system that supports the practical and efficient use of all modes of transportation
	Economic Vitality: Ensure adequate transportation facilities to support the existing local economy and connect Billings to local, regional, and national commerce

Comments: WHEN BUILDING THE LOCKWOOD/HEIGHTS BYPASS
PLEASE START THE CONSTRUCTION ON THE ROADS IN LOCKWOOD
BEFORE WORKING ON THE BRIDGE. HAVING THE ROADS IN
LOCKWOOD BUILT WOULD ENCOURAGE BUSINESS DEVELOPMENT
IN THE AREA THAT PROBABLY WON'T MOVE UNTIL
THE MAIN ROADS ARE BUILT. THIS WOULD HELP BUILD
THE TAX BASE FOR THE SCHOOLS.

Focus Areas

Tell us your focus areas for the Long Range Transportation Plan. Check your top four (4) areas.

Check 4	Focus Area
	Roadways
	Intersections
	Railroad
	Trucks/Freight
	Bus Transit
	Airport
	Pedestrians
	Bicycles

Other Comments: _____

If you would like to receive project updates, please fill out the information below.

Name: PETER FREIVALDS
Email: PJAR42@GMAIL.COM

Please leave your completed comment sheet at the sign-in table. If you would like to complete it at a later date, please send it to the YCPB, 2825 3rd Avenue North, 4th Floor, Billings, MT 59101 or take the online survey at BillingsLRTP.com
While your comments are always welcome, they can be best utilized if received by May 29, 2018.
Thank you!

Send to Todd @Dowl

Focus Areas BILLINGS HEIGHTS

Tell us your focus areas for the Long Range Transportation Plan. Check your top four (4) areas.

Check 4	Focus Area
	Roadways
✓	Intersections
	Railroad
	Trucks/Freight
✓	Bus Transit
	Airport
✓	Pedestrians
✓	Bicycles

Other Comments: WALKABLE ACCESS TO GROCERY, HEALTH ENTERTAINMENT & HARDWARE/BLDG ETC.
RAISED WALKWAYS & TOP & BOTTOM OF MAIN STREET FOR PEDESTRIAN & BIKE & STROLLER ETC. (MULTI FAMILY DWELLINGS NEED FOOT ACCESS!

If you would like to receive project updates, please fill out the information below.

Name: HANK FULLEN
Email: hanwilful@yahoo.com

Please leave your completed comment sheet at the sign-in table. If you would like to complete it at a later date, please send it to the YCPB, 2825 3rd Avenue North, 4th Floor, Billings, MT 59101 or take the online survey at BillingsLRTP.com
While your comments are always welcome, they can be best utilized if received by May 29, 2018.

Thank you!



What zip code do you live in? 59105
 What modes of transportation do you use? (check all that apply)
 Car/Truck/Motorcycle
 Bike
 Walk
 Public Transportation
 Other: _____

Goals

Prioritizing goals helps the MPO guide future project prioritization.
 Please rank your top 3 transportation goals.

Rank Top 3 (1, 2, 3)	Goal
	Safe, Efficient, Effective: Develop a transportation system that is safe, efficient, and effective
	Functional Integrity: Optimize, preserve, and enhance the existing transportation system
3	Prioritized Improvements: Identify and prioritize projects that mitigate deficiencies, maximize the use of existing facilities, and balance anticipated needs with available funding
2	Environment: Develop a transportation system that protects the natural environment and promotes a healthy, sustainable
1	Multimodal: Create a transportation system that supports the practical and efficient use of all modes of transportation
	Economic Vitality: Ensure adequate transportation facilities to support the existing local economy and connect Billings to local, regional, and national commerce

Comments: LAND TO ENCOURAGE NEW FAMILY ACCESS TO BUSINESS BY BICYCLES AND WALKABLE SAFE & CONTROLLED & LIGHTED. (SIDEWALKS ARE TOO CLOSE TO BUSY FAST STREETS -

What zip code do you live in? 59101

What modes of transportation do you use? (check all that apply)

- Car/Truck/Motorcycle
- Bike
- Walk
- Public Transportation
- Other: _____



Goals

Prioritizing goals helps the MPO guide future project prioritization.

Please rank your top 3 transportation goals.

Rank Top 3 (1, 2, 3)	Goal
3	Safe, Efficient, Effective: Develop a transportation system that is safe, efficient, and effective
	Functional Integrity: Optimize, preserve, and enhance the existing transportation system
	Prioritized Improvements: Identify and prioritize projects that mitigate deficiencies, maximize the use of existing facilities, and balance anticipated needs with available funding
	Environment: Develop a transportation system that protects the natural environment and promotes a healthy, sustainable
2	Multimodal: Create a transportation system that supports the practical and efficient use of all modes of transportation
1	Economic Vitality: Ensure adequate transportation facilities to support the existing local economy and connect Billings to local, regional, and national commerce

Comments: Google Maps or App to help w/ MET

Make safer access to YDEF (Tumbleweed)

Focus Areas

Tell us your focus areas for the Long Range Transportation Plan. Check your top four (4) areas.

Check 4	Focus Area
<input checked="" type="checkbox"/>	Roadways
<input type="checkbox"/>	Intersections
<input type="checkbox"/>	Railroad
<input type="checkbox"/>	Trucks/Freight
<input checked="" type="checkbox"/>	Bus Transit
<input type="checkbox"/>	Airport
<input checked="" type="checkbox"/>	Pedestrians
<input checked="" type="checkbox"/>	Bicycles

Other Comments:

Love the Roundabouts

If you would like to receive project updates, please fill out the information below.

Name: *Drew Johnson*

Email: _____

Please leave your completed comment sheet at the sign-in table. If you would like to complete it at a later date, please send it to the YCPB, 2825 3rd Avenue North, 4th Floor, Billings, MT 59101 or take the online survey at BillingsLRTP.com

While your comments are always welcome, they can be best utilized if received by May 29, 2018.
Thank you!

Appendix D Public Open House #1
Sign-In Sheet

Please Sign In

Public Open House
May 14, 2018

Requested Information

Voluntary Information

Name

Mailing Address

E-Mail Address

CONRAD STROEBE 213 Johnson Ln
Billings MT 59101 stroebefam@aol.com

Male Female
 Disabled
 American Indian/Alaskan Native
 Asian/Pacific Inlander
 Black Hispanic
 White Other

THOM MCKEAN 523 YELLOWSTONE AVE
BILLINGS, MT 59101 thommckean@gmail.com

Male Female
 Disabled
 American Indian/Alaskan Native
 Asian/Pacific Inlander
 Black Hispanic
 White Other

LYLE GABRIAN 3142 Zimmerman Pl.
Billings, MT 59106 lgabrian@bresnan.net

Male Female
 Disabled
 American Indian/Alaskan Native
 Asian/Pacific Inlander
 Black Hispanic
 White Other

Cheryl Lenhardt 3209 Rimrock 59102 cherlenhardt@gmail.com
(Zimrod neighbor)

Male Female
 Disabled
 American Indian/Alaskan Native
 Asian/Pacific Inlander
 Black Hispanic
 White Other

ED GULICK 3015 10th Ave N.
Billings, MT 59101 edgulick47@alum.pomona.edu

Male Female
 Disabled
 American Indian/Alaskan Native
 Asian/Pacific Inlander
 Black Hispanic
 White Other

Male Female
 Disabled
 American Indian/Alaskan Native
 Asian/Pacific Inlander
 Black Hispanic
 White Other

Male Female
 Disabled
 American Indian/Alaskan Native
 Asian/Pacific Inlander
 Black Hispanic
 White Other

Please Sign In

Public Open House
May 14, 2018

Requested Information

Voluntary Information

Name Mailing Address E-Mail Address

-Lora Matto c/o Planning

Male Female
 Disabled
 American Indian/Alaskan Native
 Asian/Pacific Inlander
 Black Hispanic
 White Other

Teresz Hook. 213 Johnson Ln.

Male Female
 Disabled
 American Indian/Alaskan Native
 Asian/Pacific Inlander
 Black Hispanic
 White Other

MING CABRERA 1734 POLY DR 59102

Male Female
 Disabled
 American Indian/Alaskan Native
 Asian/Pacific Inlander
 Black Hispanic
 White Other

Deanne Lehman 3725 Hawthorn Dr. lehnm@bigskyeda.org

Male Female
 Disabled
 American Indian/Alaskan Native
 Asian/Pacific Inlander
 Black Hispanic
 White Other

Simon Harper bar 30635 59107

Male Female
 Disabled
 American Indian/Alaskan Native
 Asian/Pacific Inlander
 Black Hispanic
 White Other

PETER FREIVALDS 1022 NOBLEWOOD DR PJAR42@GMAIL.COM
59101

Male Female
 Disabled
 American Indian/Alaskan Native
 Asian/Pacific Inlander
 Black Hispanic
 White Other

Male Female
 Disabled
 American Indian/Alaskan Native
 Asian/Pacific Inlander
 Black Hispanic
 White Other

Please Sign In

Public Open House
May 14, 2018

Requested Information

Voluntary Information

Name Mailing Address E-Mail Address

Mike Black 4411 Toyon Dr Billings MT mblack@co.yellowstone.mt.gov

Male Female
 Disabled
 American Indian/Alaskan Native
 Asian/Pacific Inlander
 Black Hispanic
 White Other

Leo Barsanti 3314 Pipestone Drive Leos47@MSN.com

Male Female
 Disabled
 American Indian/Alaskan Native
 Asian/Pacific Inlander
 Black Hispanic
 White Other

- Bob Riehl 126 Rolling Meadow Drive bsriehl@gmail.com

Male Female
 Disabled
 American Indian/Alaskan Native
 Asian/Pacific Inlander
 Black Hispanic
 White Other

- Debra Hagel 705 Monard Rd Billings, MT

Male Female
 Disabled
 American Indian/Alaskan Native
 Asian/Pacific Inlander
 Black Hispanic
 White Other

Denise Joy joyd@ci.billings.mt.us

Male Female
 Disabled
 American Indian/Alaskan Native
 Asian/Pacific Inlander
 Black Hispanic
 White Other

HANK FOWER hankfower@ychoo →

Male Female
 Disabled
 American Indian/Alaskan Native
 Asian/Pacific Inlander
 Black Hispanic
 White Other

Kelli Workman ARA 1505 Ave. D.

Male Female
 Disabled
 American Indian/Alaskan Native
 Asian/Pacific Inlander
 Black Hispanic
 White Other

Please Sign In

Public Open House
May 14, 2018

Requested Information

Voluntary Information

Name	Mailing Address	E-Mail Address		
Danny Choriki	20 Marshall Dr	danny.choriki@gmail	<input checked="" type="checkbox"/> Male <input type="checkbox"/> Female	<input type="checkbox"/> American Indian/Alaskan Native
			<input type="checkbox"/> Disabled	<input type="checkbox"/> Asian/Pacific Inlander
				<input type="checkbox"/> Black <input type="checkbox"/> Hispanic
				<input type="checkbox"/> White <input checked="" type="checkbox"/> Other
Jack Nichols	942 N. 14 th	jacknickel555@gmail.com	<input type="checkbox"/> Male <input type="checkbox"/> Female	<input type="checkbox"/> American Indian/Alaskan Native
			<input type="checkbox"/> Disabled	<input type="checkbox"/> Asian/Pacific Inlander
				<input type="checkbox"/> Black <input type="checkbox"/> Hispanic
				<input type="checkbox"/> White <input type="checkbox"/> Other
Drew Johnson	1139 Annella Dr.	ADJ1223@gmail.com	<input checked="" type="checkbox"/> Male <input type="checkbox"/> Female	<input type="checkbox"/> American Indian/Alaskan Native
			<input type="checkbox"/> Disabled	<input type="checkbox"/> Asian/Pacific Inlander
				<input type="checkbox"/> Black <input type="checkbox"/> Hispanic
				<input type="checkbox"/> White <input type="checkbox"/> Other
Jan Rehberg	4401 Hwy 3	jan@rehberg ranch.com	<input type="checkbox"/> Male <input type="checkbox"/> Female	<input type="checkbox"/> American Indian/Alaskan Native
			<input type="checkbox"/> Disabled	<input type="checkbox"/> Asian/Pacific Inlander
				<input type="checkbox"/> Black <input type="checkbox"/> Hispanic
				<input type="checkbox"/> White <input type="checkbox"/> Other
✓ Scott Walker		c/c PLNG.	<input type="checkbox"/> Male <input type="checkbox"/> Female	<input type="checkbox"/> American Indian/Alaskan Native
			<input type="checkbox"/> Disabled	<input type="checkbox"/> Asian/Pacific Inlander
				<input type="checkbox"/> Black <input type="checkbox"/> Hispanic
				<input type="checkbox"/> White <input type="checkbox"/> Other
✓ Monica Becker		c/c Planning	<input type="checkbox"/> Male <input type="checkbox"/> Female	<input type="checkbox"/> American Indian/Alaskan Native
			<input type="checkbox"/> Disabled	<input type="checkbox"/> Asian/Pacific Inlander
				<input type="checkbox"/> Black <input type="checkbox"/> Hispanic
				<input type="checkbox"/> White <input type="checkbox"/> Other
✓ WYETH FRIDAY		PCSD	<input checked="" type="checkbox"/> Male <input type="checkbox"/> Female	<input type="checkbox"/> American Indian/Alaskan Native
			<input type="checkbox"/> Disabled	<input type="checkbox"/> Asian/Pacific Inlander
				<input type="checkbox"/> Black <input type="checkbox"/> Hispanic
				<input checked="" type="checkbox"/> White <input type="checkbox"/> Other

Appendix E Detailed Map Comments from
Online Survey

File contains all data collected as of May-29-2018 17:10:26-UTC. Click the Refresh button in Data Center to download the latest dataset.

Latitude	Longitude	VisitId	MarkerType	Comment
45.7742453	-108.5032665	3078676	Comment	Need more development south of tracks. Bike trails, maybe a protected pedestrian space with no car access.
45.7812271	-108.5033481	3079084	Comment	we need bus routes that run longer than the current route times (earlier morning, later evening). If we want to continue engaging an active workforce on lower paying wage, we will need to help provide transportation-especially with our extreme weather conditions
45.7829851	-108.5016929	3079094	Comment	train tracks over/under pass
45.7997505	-108.4672256	3079133	Comment	Utilize the river and make it part of our town
45.7813163	-108.5152913	3079631	Comment	I appreciate that this is now a two-lane right turn (for those driving north and turning onto 4th)
45.7700265	-108.522845	3079631	Comment	I find this intersection is particularly well-done (traffic flows well from all directions)
45.8059652	-108.4836113	3079656	Comment	Bike trails in Alkali Creek are great.
45.7990773	-108.5433499	3080043	Comment	-----
45.7698603	-108.6387349	3080161	Comment	Many west end intersections in the County are dangerous. Maybe controlled intersections are warranted.
45.7851573	-108.5037861	3080574	Comment	As it is now, if you take the bus from the west-end to the heights, chances are you'll have spend a half hour waiting around at the Downtown Transfer Center. It would be more convenient if the schedules were altered so the buses that go to the Downtown Transfer Center would arrive and depart at the same times.
45.8074014	-108.4634624	3081031	Comment	-----
45.8267754	-108.4078021	3082342	Comment	Ensure that new development in the Lockwood TEDD installs boulevard sidewalks.
45.7773069	-108.5164518	3082447	Comment	It's very difficult for cyclists to move east-west because Division forces all traffic onto Broadwater, which is a poor street for cycling.
45.7769954	-108.567917	3082452	Comment	we have very bad traffic lights system (Flow, Timing and duration)
45.8108957	-108.4964825	3082460	Comment	I can't think of anything else
45.8195729	-108.57788	3082463	Comment	find a way to make the proposed inner belt loop path shorter. Perhaps a straight shot from Highway 3 to Skyway drive. The proposed route west of rehberg ranch seems like it would take too long.
45.7659832	-108.5968667	3082461	Comment	It is not necessary to widen the 32nd Street Corridor. People need to utilize the Shiloh Road corridor or other north-south corridors of they think 32nd Street West is too "congested" Millions was spent on Shiloh, and past improvements to 32nd Street West, let's not throw it away to address a few complaints.
45.7611034	-108.5458817	3082496	Comment	-----
45.7835838	-108.6005559	3082496	Comment	-----
45.7691566	-108.6170139	3082496	Comment	too many accidents at the circles, need to add signage on how to use them, or remove and replace with signals.

45.8222371	-108.580085	3082504	Comment	I have lived in many parts of the country as well as in Europe. In most I was able to organize my life so that I could bus, bike or walk to work and travel regionally by train. Unfortunately, none of those things are practical for me here so I am almost completely reliant on my car. And, it is disappointing to me that it turns out that, in my opinion, Billings has the worst drivers I've ever encountered. I have never seen more people that are completely indifferent to how their actions affect others and never even knew some of the ways in which Billings drivers suck even existed. We need focused police action on dangerous and even stupid and annoying driving habits and a focused public education on getting people to respect others and act like they live in a community. I don't know if world peace would follow but it would be a nice change of pace from the current situation.
45.8265753	-108.537142	3082939	Comment	Finish connecting to Airport rd.
45.7650571	-108.5764525	3082939	Comment	We live in the heights and totally avoid the westend on the weekends because of too much traffic.
45.7764304	-108.5008847	3082945	Comment	LOVE the bike lanes down to South Park!
45.7828354	-108.526076	3082945	Comment	LOVE the bike lanes on Lewis!
45.8026145	-108.5251533	3082967	Comment	My interests lie in at least one pedestrian/bike trail designated at either Airport Road or Zimmerman trail. Pedestrians and cyclists need a safe way connect to the trail system.
45.769679	-108.6383879	3082975	Comment	The new 4-way stop planned here shortly is an indicator of the need to plan for additional road and pedestrian/bike improvements in this area--particularly with Ben Steel Middle School.
45.7800843	-108.507378	3082975	Comment	Traffic light here gives unnecessary time in the morning to southbound traffic on N 30th.
45.7856323	-108.4983658	3082975	Comment	On street parking on 1st Ave N (and other high traffic streets in this general area) near intersections blocks vision of drivers trying to turn onto such streets...very unsafe.
45.7649402	-108.5592591	3083041	Comment	Improve the view on the interstate as you drive by Billings, the oil refineries look horrible and I've heard people who drive by Billings on how horrible it looks. Include the river into our city somehow
45.800221	-108.4702217	3083089	Comment	Use Revenue from Enforcing Red Light offenders and Cell phone use while driving tickets to go towards funding some of your projects.
45.7975355	-108.4556499	3083213	Comment	Lots of dangerous situations occur near the exit/entrance ramps.
45.7681088	-108.6142241	3083259	Comment	I get frustrated that we spend millions of dollars improving west end arterials to make it more convenient for people who live outside the city and do not pay arterial fees and city taxes to commute into town.
45.7769691	-108.6254731	3083373	Comment	More connected bike trails and keep them off the roads...most of our bike lanes on the roads are very unsafe.
45.7844515	-108.6252156	3083373	Comment	Road condition is terrible in town, so much repair and maintenance needs to be done, especially from winter. There are potholes so large around town you could lose your entire vehicle.
45.7896436	-108.6247221	3083373	Comment	Access at dead-end of 43rd Street west just North of Waterford Drive to bike/walking path across the ditch.
45.782153	-108.5057587	3083689	Comment	change most one way streets to two way
45.7579131	-108.5887797	3083768	Comment	I think the winter plowing on "side streets" was fine this year. I drive an SUV so I would be fine without it.
45.7443044	-108.5595714	3084771	Comment	Need basic service businesses to serve residential areas like this one so transportation needs are reduced. This may be an opportunity also, especially in certain areas.
45.7558036	-108.5842048	3084771	Comment	Automobiles travel far too fast on the big thoroughfares like King, Laurel Frontage Road, even Shiloh sometimes. The roundabouts on Shiloh have been very effective at allowing a thoroughfare without lights and periodic speed checking.

45.7852196	-108.503578	3086153	Comment	I don't understand why we rely on typical busses in Billings instead of passenger vans. I generally see buses carrying very few passengers and I often wonder if we couldn't get more bus service for our funding if we switched to smaller vehicles like vans. I know this leaves open the question of servicing wheelchairs. I'm not sure that I know the exact answer to that concern, but I would raise the idea that we might be able to improve our overall bus service by looking at smaller vehicles making more frequent trips rather than large buses getting limited use.
45.7759216	-108.5399162	3088735	Comment	-----
45.8719803	-108.4496223	3088930	Comment	Need a funding structure that shares responsibility for safe roads to schools
45.7427171	-108.555752	3088735	Comment	Improved pedestrian infrastructure (no sidewalks on arterials)
45.7479581	-108.556224	3088735	Comment	Interchange improvements
45.7625703	-108.5970151	3088735	Comment	EBR at Monad & 32nd
45.7553844	-108.5967576	3088735	Comment	Adaptive signal timing
45.7932777	-108.4182484	3088735	Comment	Right turn lane or roundabout for traffic calming
45.7842157	-108.6177833	3088735	Comment	Pedestrian Crossing @ roundabout needs signal - badly needed! (love the roundabouts :))
45.7986389	-108.6018617	3088735	Comment	Right turn lane at bottom of Zimmerman Trail
45.8101269	-108.5983855	3088735	Comment	Inner Belt Loop from Skywalk to Zimmerman
45.7841259	-108.638683	3088735	Comment	Grand Ave between Shiloh & 56th - 3 schools - need wider road for/with turning lanes - bike/walking path
45.7769521	-108.5969626	3088735	Comment	Add lanes to 32nd St. W
45.7700414	-108.5282066	3089848	Comment	There seems to be a lot of backup of people turning left here. So much so that the cars on the overpass get stopped. Since people don't slow down to 35mph on the overpass as they should, this can be kind of scary when the traffic stops all of the sudden.
45.7667245	-108.4884642	3089899	Comment	The entries to the city are dismal. If I were driving by, there is nothing that would entice me to stay in Billings and explore the area. Would like more attractive gateways to our community.
45.7693441	-108.6595127	3090050	Comment	put in a stop light. No more roundabouts
45.7839872	-108.4983668	3090089	Comment	pedestrians on MT ave are an issue. Cars have a hard time seeing people wanting to cross, etc. also have seen lots of speeding vehicles in this area.
45.8347926	-108.4773804	Open House	Comment	Phoebe Lane - no pavement
45.8306064	-108.4710719	Open House	Comment	Main St - Slow traffic cleanup, main st - improve business climate
45.8246991	-108.4770749	Open House	Comment	Lake Elmo water sewer development
45.8267028	-108.4736202	Open House	Comment	Sioux Lane paving weeds large housing development, west lake elmo
45.7881123	-108.515055	Open House	Comment	Trolley from downtown to MSUB - rezone NC 32nd

45.7444639	-108.5967658	Open House	Comment	Upgrade to road on 32nd @ King to Gabel and 32nd
45.74081	-108.606808	Open House	Comment	Congestion backs up traffic coming off interstate @ rush "minute"
45.8000351	-108.4541152	Open House	Comment	trail/walkway for pedestrian safety along Metra Park and beautification connection to I90
45.7901609	-108.5279296	Open House	Comment	Needs improved sidewalks
45.7938163	-108.4164245	Open House	Comment	Roundabout @ So Johnson and Hwy 87 (slow down north to sb on 87)
45.7996808	-108.4349854	Open House	Comment	Picoco - remove congestion via?
45.7985139	-108.4321959	Open House	Comment	Hillner - remove triangle
45.7989328	-108.4375817	Open House	Comment	remove left turns into school
45.7869936	-108.4548552	Open House	Comment	Plan Basline Rd to I90 (Grand Ave of Lockwood)
45.7963297	-108.4611637	Open House	Comment	Trail over yellowstone (off roadway)
45.805784	-108.475712	Open House	Comment	Elevated foot and bike crossing for walkable improved access to grocery/health/entertainment from housing developments
45.8227138	-108.4709484	Open House	Comment	Elevated foot and bike crossing for walkable improved access to grocery/health/entertainment from housing developments
45.8130232	-108.4070904	Open House	Comment	Move Becraft to Johnson off old Hardin Rd. Remove all angle intersections (safety)
45.7623889	-108.4944231	Open House	Comment	Safe walkway/path for pedestrians to access the YCDF
45.82096	-108.3943721	Open House	Comment	Old Hardin pedestrian pathway
45.7522194	-108.617446	Open House	Comment	Underpass under Shiloh between Shiloh crossing and mt sapphire
45.7925403	-108.4977551	Open House	Comment	Peds dont use crosswalk
45.7906851	-108.4904166	Open House	Comment	Improved ped experience through traffic calming
45.7466793	-108.5356494	Open House	Comment	S Billings Blvd bike/pedestrian to the river park
45.8049271	-108.616459	Open House	Comment	Traffic connect from Rims/Hwy 3 to Shiloh
45.785897	-108.4761258	Open House	Comment	Pedestrian bridge connecting four dances and Coulson Park
45.8024141	-108.4867688	Open House	Comment	Connect Heights and Downtown with a tunnel and name it after Willard Frazer
45.7635673	-108.5422583	Open House	Comment	Intersection needs to be improved - Moore/Monad/Laurel/RR Bottleneck

45.7335577	-108.6038891	Open House	Comment	One overpass - needs more lanes, at least 2 lanes each direction with separate right turn lanes
45.7551437	-108.658692	Open House	Comment	Needs to keep King Ave traffic flowing 60 mph. for long commuters
45.7553234	-108.6905352	Open House	Comment	Overpasses across King, not roundabouts to keep traffic speed going on King to Keep long work travelers from having to slow and waste gas. They want to keep traveling 60 mph from out west into Billings on King.
45.7552643	-108.6347087	Open House	Comment	Traffic concerns on King Aves W too slow. Keep it flowing 60 mph.
45.7820273	-108.5082447	3078676	Need	More pedestrian only places, less cars. More walkability and channels to bike into downtown. More plant life, roof top gardens, and store fronts facing walkways so people can see inside. Maybe even more sky walkways for when it gets cold to keep pedestrians safe and motivated to show downtown and be downtown all year long.
45.8027342	-108.5106479	3078787	Need	Need to connect the Heights to downtown, probably with a tunnel.
45.8079325	-108.6269688	3078787	Need	We need another way to get down off the Rim connecting to the West End without seriously impacting residential neighborhoods.
45.7817849	-108.5036518	3078787	Need	A major urban center does not have a train track dividing its core downtown area in half.
45.799385	-108.4756006	3078787	Need	A fly over connecting Bench and 6th Ave would alleviate a lot of downtown/ Heights traffic.
45.8396742	-108.4016564	3078787	Need	Connect Lockwood to Johnson Lane at the northern end.
45.7951346	-108.4570037	3079084	Need	an additional stop for the city bus transportation across the johnson lane bridge
45.7914242	-108.6112415	3079085	Need	make 38th St go all the way through
45.7988448	-108.6527192	3079085	Need	a light and a turn lane for those turning left onto 54th from Rimrock Rd
45.7992038	-108.6713659	3079085	Need	This whole area is a cluster. Traffic coming from so many directions and everyone going 55 MPH and only one lane going each way. Also, the curve is terrible in bad weather
45.7893672	-108.5121029	3079084	Need	the sidewalks seem to be the first to be neglected when it comes to maintenance. In order to promote other modes of transportation, we need to be able to provide accessible walkways
45.8126545	-108.4140763	3079119	Need	better planned lights/flow during busy times
45.8139645	-108.4139905	3079119	Need	better planned lights for less sitting
45.7942968	-108.494569	3079094	Need	more traffic calming measures and more greenscapre
45.8361122	-108.4623253	3079128	Need	City bus to run on the St. Andrews/Lake Hills side of wicks. Schools are to far for kids to walk, yet not far enough for school buses.
45.7910651	-108.4956848	3079094	Need	more traffic calming measures and greenscape
45.8011866	-108.5270857	3079133	Need	Bike route to and from the Rims
45.8078798	-108.5495292	3079128	Need	We need to figure out why it is so expensive to fly out of Billings, yet Cody, Wyoming is much cheaper.
45.7986711	-108.5203897	3079139	Need	Very difficult to turn left on 27th to go to the heights. Back-up is bad at prime times (8am, noon, 5pm)

45.7710125	-108.6209404	3079140	Need	-----
45.7413564	-108.5351068	3079076	Need	Turn lanes
45.7166475	-108.5013051	3079076	Need	Streetlights in Briarwood neighborhood to increase safety!
45.8038139	-108.5378583	3079178	Need	More affordable flights to compete with Bozeman
45.7831283	-108.5070548	3079278	Need	Public transit downtown to other parts of town. Current bus transit is a joke.
45.783702	-108.5605036	3079588	Need	Turn lanes
45.7858902	-108.5073492	3079588	Need	Downtown area needs better pedestrian management
45.768237	-108.5300733	3079631	Need	Difficult for pedestrian traffic to pass through this intersection and/or the underpass
45.7693909	-108.5305212	3079631	Need	Traffic commonly backs up here during peak traffic hours (usually packed with vehicles traveling north to south)
45.8126513	-108.4139869	3079649	Need	The functionality of this area(Johnson Lane-Old Hardin Rod intersection and the ramps on and off of I-90) needs a lot of work. The light before the interstate backs up into the Old Hardin Rd -Johnson Lane interchange and often has traffic backed up well beyond Saddle Lane. Hundreds of cars are stopped for a minute at a time everytime a single car wants to turn north off of the east bound I-90 exit ramp. The light at the east bound exit ramp has really exacerbated an already problematic and congested intersection. I know there is work planned here in conjunction with the bypass, but in mean time something needs to be done with light timing and adding a longer RH turn lane from Old Hardin east of Johnson Lane for those turning north onto Johnson Lane.
45.7840585	-108.5279318	3079649	Need	-----
45.7985551	-108.4588225	3079649	Need	-----
45.7964532	-108.4699536	3079649	Need	This bridge is especially problematic in the winter given both a transverse and longitudinal slope. MUCH more attention needs to be paid to keeping this bridge de-iced and sanded. It is very hazardous and prone to accidents.
45.811948	-108.598796	3079656	Need	Bypass for the height. Connect into new Zimmerman Trail Roundabout.
45.9264554	-108.8557731	3079693	Need	-----
45.7974684	-108.6584055	3079693	Need	lower speed limit west of 54th street. The current limit hasn't been lowered to reflect all the new construction going on. There is no shoulder on the road and bikers and runners are at great risk.
45.7798126	-108.5109817	3079725	Need	Bike friendly roadways
45.7962716	-108.556472	3079725	Need	More bus routes from MSUB and Rocky to downtown Billings
45.8184088	-108.5756218	3079878	Need	Finish Inner Belt Loop from Skyway Drive to Zimmerman Trail. Connect the Heights to the West End.
45.7843019	-108.6290085	3079878	Need	Grand West of Shilo needs improvements given all the schools on this stretch. Bike and walking paths. Left and Right Turn lanes into schools.
45.7935188	-108.600856	3079878	Need	Expand Zimmerman Trail to better handle volume.

45.834756	-108.4535959	3079878	Need	Bike and Walking bath needed along Barrett Rd for Student safety.
45.8238437	-108.6467962	3079941	Need	There is a need to define a preferred alignment fro a connection from Hwy 3 to Molt Road. There was a great one, but the developer of Ironwood killed it. This needs to be a community project to provide an alternate route to N 27th and Zimmerman.
45.7809201	-108.53581	3079941	Need	The intersection of Lewis & 8th St W needs some help. The current two-way stop is not ideal, plus the site distances are limited to the north. And the odd angle makes for a potentially dangerous situation. A roundabout might work (or not with the grade) but something to slow down traffic and improve sight distance.
45.7831426	-108.5008125	3079941	Need	Slow down traffic on Montana east of 27th Street. If you are a pedestrian and try to use the crosswalks... good luck. Most vehicles do not stop for you. Do a road diet and reduce to two thru lanes.
45.7949446	-108.5279228	3080132	Need	Improve this intersection...possibly a roundabout.
45.8025182	-108.5952709	3080132	Need	Separate Bike/Ped Facility alongside Zimmerman Trail.
45.7729283	-108.5969936	3080151	Need	Improve 32nd Street Corridor to 5-lanes
45.8068028	-108.6001693	3080151	Need	Complete "inner belt loop" from Wicks to Zimmerman.
45.8034917	-108.4344878	3080159	Need	-----
45.795407	-108.4916736	3080161	Need	Billings' own Daytona Speedway. You can see Dale Earnhardt Jr. driving most days of the week.
45.7936715	-108.4856225	3080161	Need	Area in general needs more pedestrian facilities.
45.7833717	-108.5072391	3080201	Need	Two way streets in downtown that explicitly accommodate bikes. Downtown has the highest concentration of jobs and services and needs to be accessible to all.
45.8004639	-108.5286362	3080201	Need	For both commuting and tourism, a trail along 27th for bikes and peds is really needed.
45.7936777	-108.5243281	3080201	Need	Bike lane connecting Poly to N 30th.
45.7859853	-108.5266599	3080201	Need	Pave trail here as a part of bike boulevard system.
45.7685531	-108.5289945	3080201	Need	Underpass and intersections need to safely accommodate bicyclists.
45.7894392	-108.4984568	3080574	Need	-----
45.804922	-108.5970555	3080574	Need	-----
45.744455	-108.5564187	3080682	Need	Side walks and/or bike lane
45.8193659	-108.3916008	3080764	Need	bus and safe bike and walk ways
45.7698598	-108.5805354	3080907	Need	Central is an absolutely disaster, as are many of our roads right now. The amount of pot holes is completely unacceptable.
45.793999	-108.4813661	3081031	Need	traffic backs up to Yellowstone bridge at certain times events and 5pm
45.8000916	-108.4794283	3081031	Need	speed limit should be 25mph crest of the street makes it hard to see on coming from left at stop sign and right comes down hill fast

45.7840573	-108.5779542	3081049	Need	This route is very difficult - Several stop light intersections with no designated turn lanes. Did not get plowed during heavy snow fall.
45.8057631	-108.4757404	3081154	Need	Safer intersection
45.7841823	-108.600444	3081154	Need	Roundabouts throughout 32nd St at Grand, Central, Broadwater, King, etc.
45.7826504	-108.5044993	3081154	Need	This intersection desperately needs a left turn arrow for westbound traffic heading north on 27th st.
45.7498279	-108.5564489	3082342	Need	Convert to a red or green left turn arrow from the existing turn arrow and green light. Many accidents occur here.
45.7499476	-108.5761041	3082342	Need	Evaluate this intersection for a controlled intersection.
45.7451448	-108.5457079	3082342	Need	Extend Songbird to Midland Road
45.8043514	-108.433799	3082342	Need	Build sidewalk along Old Hardin Road
45.8006416	-108.4344427	3082342	Need	Improve Piccolo Ln
45.7623906	-108.5076439	3082451	Need	-----
45.7833549	-108.5059278	3082446	Need	Need to get rid of the angle parking west of Park Two parking garage -- it's super hard to see cars coming down 2nd Avenue when trying to pull out of the garage. Put the angle parking across the street and put the curblin parking on the north side of the street to make it easier to see down the street when pulling out of the
45.8442444	-108.5357963	3082451	Need	-----
45.770165	-108.5216454	3082451	Need	-----
45.7635051	-108.4784337	3082443	Need	Continue Bike Path
45.7554443	-108.5970794	3082456	Need	Better flow on 32nd from Zimmerman to Gable.
45.8346942	-108.4618217	3082443	Need	Improvements needed to improve safety of people walking in the area. Side walks should be continued the full length of Barrett RD.
45.7771152	-108.6062833	3082452	Need	we need 2 line street.
45.8351554	-108.4595787	3082460	Need	more bus routes/more frequent trips to the Heights
45.8011186	-108.5974675	3082461	Need	Pedestrian/Bicycle access from Highway 3 to Rimrock Road is needed along Zimmerman Trail.
45.8309992	-108.5294019	3082462	Need	Trail
45.7698165	-108.6025963	3082452	Need	2 line street.
45.8451917	-108.4275412	3082443	Need	Do not ruin this park by running a road through it!
45.7841616	-108.6325207	3082456	Need	Work with County to Build Grand and Central to at least 56th. Condemn property if necessary.

45.7856911	-108.5041043	3082460	Need	need last bus to leave later to the Heights in the evenings from downtown, or additional runs from downtown around quitting time
45.8023801	-108.5465991	3082462	Need	Trail off the Rims to town
45.8042899	-108.5661804	3082463	Need	Bike Trail from Airport to Zimmerman
45.8026145	-108.4788906	3082472	Need	heights to downtown rail, would cut down on metra area congestion
45.7946911	-108.4850619	3082472	Need	Major road reconstruction
45.8231164	-108.4400718	3082472	Need	This subdivision is a bane on the community, there needs to be something done about this mistake. It has tarnished the schools and the general well being of a previously wonderful area.
46.0218199	-108.5035061	3082474	Need	-----
45.7896886	-108.4862935	3082487	Need	need a better way to handle the problems with trains and traffic around this intersection. Major problems with traffic back up during peak hours.
45.7810696	-108.5303032	3082504	Need	24th - Trees along road to cool environment and calm people down. More right turn lanes to speed traffic through intersections. Cameras at intersections to stop people from running red lights. Education to get people to drive better. Driving 50 on 24th is not ok. Driving 10 on 24th is not ok. Failing to use turn signals is not ok. Getting engrossed in your phone and failing to notice that the light has changed is not ok. Some of us have places we have to go and we are unfortunately stuck with getting from place to place by motor vehicle so we need to make it possible for that to happen.
45.7855182	-108.5083489	3082880	Need	-----
45.8036515	-108.5381077	3082880	Need	-----
45.7669711	-108.5968362	3082939	Need	Should of made it wider from the start. Needs to be widened.
45.7872946	-108.5013782	3082945	Need	light-controlled cross walks on these main thoroughfares through Billings. Montana Avenue, 4th Avenue North, 6th Avenue North are all nightmares for pedestrians and/or bicycle riders to navigate.
45.7740377	-108.576195	3082939	Need	Needs to be widened.
45.7846311	-108.6047827	3082945	Need	Maybe this has been completed already - I haven't been out this far on bike/foot lately, but there was not a connecting pedestrian walkway between Zimmerman & Shiloh on Grand. Stressful when you're trying to walk/run/bike with the drag racers
45.7767596	-108.5538208	3082967	Need	Traffic traveling north south are stopped at nearly every intersection. Sometimes for long periods of time and no traffic what so ever in site. Are there more ways to trip the lighting to change the light? Early/late hours especially. Perhaps making most of these streets change to flashing red light to stop and go instead of wasting gas.
45.7984857	-108.6528265	3083052	Need	Stoplight, roundabout
45.7985156	-108.6736833	3083052	Need	Stoplight, round a bout
45.7841522	-108.6344587	3083052	Need	Widen Grand from Shiloh to 56th
45.7769093	-108.6113488	3083052	Need	widen Broadwater from Shiloh to 30th. Increase speed limit to 45.
45.7698151	-108.6066925	3083052	Need	Widen Central from Shiloh to 32nd. Round a bout at City College.

45.7671314	-108.6514762	3083079	Need	-----
45.7752696	-108.5013071	3083041	Need	Improve the south side due to crime, poverty, etc.
45.7892098	-108.4994041	3083089	Need	Better turning lanes, turn signals
45.774844	-108.5230934	3083089	Need	Better traffic flow in Monad road area for morning and evening commute
45.8240315	-108.3864938	3083094	Need	The intersection of Becraft and Old Hardin Rd and Johnson Lane is congested with Morning traffic and Semi's. There is limited ways to get on to I-90 if you live East of Johnson Lane. Suggest an entrance ramp be built somewhere near Dickie Rd. This would allow another option to get out of Lockwood. With the new road to the Heights and the New High School being built Lockwood should expect to see growth. Looking at the new building going on that growth is going to happen East of Johnson Lane adding to the problem.
45.8117664	-108.4139252	3083094	Need	This intersection needs a round about that would join Becraft.
45.8130527	-108.412509	3083094	Need	Congested area. Vehicles go through local business to avoid this area.
45.797648	-108.4860145	3083156	Need	Need for a safe and environmentally and user friendly path of connectivity between the heights and downtown for bicyclists and pedestrians.
45.751969	-108.6140398	3083156	Need	Need for public transportation that allows for residents of the heights to see movies on the west end with show times after 1:00 pm or 3:00 pm.
45.7748178	-108.506842	3083156	Need	Need for residents that may not own a car to have public transportation available past 8:00 pm and on Sundays.
45.8251081	-108.4568321	3083178	Need	commercial, retail planning and development
45.8121718	-108.4140063	3083199	Need	Intersection and traffic is a nightmare. The lot behind Casey's Corner is for sale. Please purchase this and create a cut across road for those needing to travel between Becraft and Johnson Ln. This cut across would alleviate people cutting thru the parking lot.
45.7959855	-108.4560262	3083199	Need	This light needs to be better timed. There are days when only 3 or 4 cars coming out of Lockwood can get through the light while it remains green for a long time for cars coming off I90 when no one is actually there. Morning rush hour traffic gets backed up all the way to the intersection at Old Hardin/Hwy 87E when the roads are bad. Please put in better traffic light sensors.
45.7956943	-108.4138771	3083199	Need	Johnson Lane has GOT to be widened. It is scary driving that close to the edge when the roads are icy. Plus adding in future high school traffic, it needs to have a shoulder on both sides with a middle turn lane near Ford Road and better reconfiguration at Hwy 87E.
45.812397	-108.4078441	3083199	Need	Had a broken pipe sink hole here a couple years ago. There are spots where the road feels like it is dipping again. Please re-level low areas.
45.8281984	-108.4191223	3083213	Need	Connecting Lockwood and the Heights would allow decreased traffic jams in and out of the heights.
45.7455622	-108.576008	3083056	Need	Overpass over I-90 on 24th street south of Jake's would alleviate a lot of traffic on both the King Ave exit and the Zoo Drive exit.
45.7706329	-108.5967147	3083056	Need	Better north and south flow of traffic on 32nd street west from Gable Rd all the way to Zimmerman. It should be 2 lanes each direction like 24th and better timing of lights. Morning and evening commuter traffic on this road gets congested. I suggest widening the road to accommodate more traffic.
45.8289155	-108.573197	3083056	Need	Connector road from Rehberg Ranch or Zimmerman to Skyway Drive in the heights. Getting to Skyline High from Billings West End is difficult.
45.7847807	-108.5052621	3083259	Need	Convert one-ways downtown back to two-ways

45.7988202	-108.5904447	3083275	Need	Traffic Light
45.7988884	-108.6018671	3083275	Need	Need a traffic light turn arrow for a left hand turn onto Rimrock from Zimmerman .
45.7871449	-108.4907138	3083259	Need	We need a real bike ped connection between downtown and the river. The bike lane on South 26th is a joke.
45.7820273	-108.697158	3083361	Need	Planning to address the extensive growth and additional traffic on westend roads which are generally build to County standards.
45.7960023	-108.602213	3083373	Need	Better intersection/round about
45.7815185	-108.6009255	3083373	Need	Better intersection/round about
45.7738562	-108.5984364	3083373	Need	Better intersection/round about
45.766552	-108.5969773	3083373	Need	Better intersection/round about
45.7829707	-108.5030159	3083474	Need	Move railroad tracks downtown or dig them down so 27th can have a bridge over them.
45.7681243	-108.5596676	3083474	Need	-----
45.7491094	-108.5505567	3083522	Need	This entry is important and we need to invest in it.
45.8448423	-108.4255039	3083539	Need	Eastern access into/out of Billings Heights
45.8193659	-108.4708225	3083539	Need	Access over main street for pedestrian crossings Safety concerns
45.8002167	-108.5962017	3083567	Need	-----
45.7975638	-108.6728674	3083567	Need	improve intersection of Rimrock and 62nd
45.7773333	-108.5682587	3083587	Need	More frequent buses and longer run times
45.8355625	-108.4432892	3083587	Need	More buses in the heights
45.7431758	-108.6723821	3083587	Need	Need to include Laurel
45.7933452	-108.6253637	3083689	Need	an interconnected network of streets should be required for all new developments on the edges of town (west end, heights, south of river etc,
45.7797826	-108.5153042	3083710	Need	make crossing Division St. safe for pedestrians and bicycles.
45.7994336	-108.4817809	3083710	Need	Need to create a safe route for pedestrians and bicycles from the Heights to downtown.
45.8008248	-108.5298588	3083710	Need	Need to create a safe route for pedestrians and bicycles up N. 27th St. to the Rims.
45.923112	-108.8001548	3083768	Need	-----

45.7554432	-108.5066206	3083768	Need	Roads need repair. Awful pothole almost swallowed my car.
45.7557426	-108.5435064	3083768	Need	Better parking situation
45.8012084	-108.4799976	3084183	Need	more than 1 main roadway into the Heights. Rush hour can be chaotic and time consuming due to a bottle neck at Main St and Airport Rd
45.7772834	-108.5153277	3084183	Need	better markings for roadway
45.7977029	-108.4814605	3084421	Need	Safe bike rransitio. To 3rd ave
45.8043288	-108.482098	3084421	Need	Connect heratige trial to rims trail
45.7670737	-108.5474908	3084479	Need	very confusing, dilapidated and wasteful road.
45.7414869	-108.5351204	3084479	Need	You need a southbound left turn lane here very badly.
45.717806	-108.5147356	3084479	Need	This entire road from Midland to Briarwood would greatly benefit by being two lanes north and south.
45.7404708	-108.5493576	3084771	Need	Need a way for safe, non-motorized travel to the other side of the interstate.
45.8119959	-108.5619575	3084964	Need	-----
45.8103451	-108.4106377	3085384	Need	Sidewalks, bike accessibility, street lights
45.8010588	-108.5987102	3085457	Need	Need a wider road on Zimmerman Trail.- 4-lane preferred.
45.7956133	-108.481326	3085457	Need	Widen Exposition Drive to accommodate one more lane of traffic on each side.
45.7628767	-108.5770549	3085697	Need	Congested
45.753435	-108.596709	3085697	Need	Congested
45.9274107	-108.73973	3085839	Need	-----
45.7830103	-108.5304166	3085839	Need	Increased bus transportation connecting different business centers around town.
45.7871125	-108.5087709	3086153	Need	It is not strictly a transportation need, but this intersection is a mess. It is dangerous for pedestrians and was one of the most dangerous intersections in town last year. The combination of the Albertsons on the north east corner, the gas station on the southeast corner, both selling alcohol and the homeless services slightly farther south on 27th lead to a large number of homeless individuals to be in the area and often intoxicated. The intersection is not super safe to cross anyway. It seems to me that what we have at present is a space that is unsafe for pedestrians crossing the street, offering easy access to alcohol to in a way that isn't making anyone's life better. I'd love to see this intersection redeveloped to be a less gritty, hopeless feeling place.
45.7840002	-108.505917	3086153	Need	It would be nice to have a median on 27th. Pedestrians cross mid-block in this area and a median would help avoid car-pedestrian collisions. I know they should be crossing at the corners, but I would prefer to have them safely make it across, even if crossing mid-block, and a median would facilitate that.
45.7710125	-108.5680687	3086177	Need	Short half hourly bus from West Park Promonade to down town and also one from there to Shilo.

45.7813585	-108.5030687	3086660	Need	Something needs to be done about the trains and traffic/traffic lights!
45.770134	-108.5536015	3086660	Need	needs a turn signal badly
45.7552634	-108.6175337	3086660	Need	better signage and clearer directions at ALL roundabouts!
45.8308496	-108.4595787	3086779	Need	-----
45.8392217	-108.4649002	3087520	Need	The heights needs another way in and out of the area. Build the Mary Street bridge! over 30,000 people live in the area and the heights is a go-thru for many neighboring communities (Roundup, Shepherd, Huntley, etc.) which lends to the congestion.
45.8271603	-108.459821	3087520	Need	Better curbs, gutters and sidewalks are needed throughout heights residential areas. Many of the streets are still gravel and difficult to drive because of constant potholes. Many of these lye in the County, but a lot of them don't. It would be a plus to have the unpaved streets brought to an acceptable standard.
45.7734073	-108.5553623	3087580	Need	Need north south bike trails midtown
45.7808525	-108.5172096	3087618	Need	Lewis is a terrible bikeway- it has too much traffic going too fast. Why not Yellowstone instead?
45.7812106	-108.5124406	3087618	Need	Downtown should have bike lanes! Please!
45.7820928	-108.515315	3087648	Need	-----
45.777319	-108.5152721	3087648	Need	-----
45.7870194	-108.5086906	3087648	Need	-----
45.7886346	-108.4920878	3087648	Need	-----
45.7467602	-108.5563098	3087729	Need	Bike/Pedestrian facilities along this busy collector. With the housing development along Elysian Road, high volume of vehicle trips. The roadway promotes high speeds with nowhere for pedestrians or bicyclists to be. MET Transit is expanding the bus route to Riverfront Point and Josephine Crossing, additional bike/ped facilities needed to enhance the usability of that new bus route.
45.7552946	-108.5244452	3087729	Need	Minor arterial that has a shared use path on the south side of King Ave E from S Billings to Orchard. Need to finish the SUP along King Ave E to Yellowstone County Detention Facility.
45.767049	-108.5203296	3087729	Need	Hallowell needs reconstructed to accommodate a complete street design. Hallowell meets up with 2nd Avenue South (across State) which is striped with a bike lane. This would continue a bike route from the Southside to downtown.
45.7806531	-108.5760889	3087812	Need	Intersection is poorly designed and functions even worst - needs to be restructured
45.7766956	-108.597284	3087812	Need	Zimmerman from Broadwater to Rimrock needs to be widen
45.8447227	-108.501464	3088333	Need	-----
45.7996188	-108.4799036	3088389	Need	Options to reduce congestion around the metra would be nice
45.7830249	-108.5061636	3088389	Need	Public transportation to get to and from downtown
45.8327634	-108.4183799	3088930	Need	Barrett road will kill children

45.7724493	-108.5268699	3089165	Need	Safe pedestrian crosswalks
45.7944763	-108.5697852	3089165	Need	Pavement improvements
45.7844216	-108.6810218	3089165	Need	Safe intersections
45.7496892	-108.5967582	3089848	Need	This roadway is falling apart, it has very limited pedestrian facilities and the hill is dangerous.
45.7920825	-108.5982811	3089864	Need	Zimmerman Trail cannot be expected to accommodate the impending vehicle traffic that will result from the Inner Belt Loop. It is crazy to promote a situation where high traffic volumes are dumped onto a very limited capacity roadway.
45.7550555	-108.5666617	3089848	Need	This intersection timing doesn't work at rush hour. If you are travelling north from Overland to 20th, it only allows about 3 cars through. If there is someone turning left from King onto 20th on a red, it's even less. If someone turns into the Holiday, it's the same problem. The result is that traffic gets backed up all the way to EBMS some days.
45.7625168	-108.5762619	3089848	Need	Turn arrows are needed for Monad! If you are turning from Monad onto 24th it can be very difficult to see and the traffic means you end up running a yellow or red. Scary!
45.7920825	-108.6700355	3089864	Need	Eliminate the triangle intersection past the YCC and Molt Road before someone gets killed!
45.8141017	-108.4060203	3089879	Need	Bus pick up and drop off sites
45.920246	-108.7946617	3089871	Need	-----
45.7838924	-108.505654	3089871	Need	resurface and make safer for pedestrians
45.7987297	-108.6734997	3089883	Need	-----
45.7909888	-108.4873	3089883	Need	-----
45.7942729	-108.4813628	3089883	Need	-----
45.7995269	-108.6733829	3089899	Need	Round-about and soon! This is a very dangerous curve!
45.7543743	-108.6378833	3090050	Need	King ave needs to be widened
45.7926057	-108.4812007	3090089	Need	needs to be redesigned, traffic backs up often and most vehicles are just sitting not moving.
45.750107	-108.5969107	3090182	Need	Improve 32nd - widen, plus bike/ped facilities from King to Gabel
45.8345763	-108.4660628	3090228	Need	Congestion and traffic flow in this area need improvement.
45.8056261	-108.4757959	3090228	Need	Pedestrian traffic in this area is dangerous
45.7827068	-108.5018917	3090228	Need	Flashing lights to indicate pedestrians are ready to cross would be helpful. Even going 25 mph it is hard to see pedestrians until you are at the crosswalk.
45.7609535	-108.5708153	3090790	Need	Traffic control on Santa Fe Blvd
45.788731	-108.5007774	3090790	Need	Sensible parking opportunities.

45.8021358	-108.4757149	3090790	Need	Enable traffic movement between the Heights and downtown
45.7724493	-108.4990608	3091246	Need	-----
45.7849004	-108.6401664	3091246	Need	-----
45.7652647	-108.579055	3091246	Need	-----
45.8190803	-108.4786999	3092104	Need	Connect to west end and Lockwood
45.8279789	-108.4709083	3092308	Need	Inadequate safe intersections for youth living west of Main assigned to MC Middle School to cross Main and other major roads safely.
45.8347368	-108.4660374	3092308	Need	Stop Light needed during school drop off and pick up hours
45.8272313	-108.4772275	3092308	Need	additional bus routes for high school and middle school to accommodate center students and athletes.
45.8245857	-108.5873695	3092586	Need	Direct connection to the heights
45.783788	-108.6591289	3092999	Need	Bus Service to Ben Steele Middle School
45.7920825	-108.4885894	3078676	Opportunity	Connect and encourage infill with protecting pedestrian walkways down town, add trolley or rail system that makes stops by Metra, Downtown, along Grand, and near West End. A rail with known stops at popular places that already have stores. Connect Billings. Covered rail stations, bike lock buildings with showers inside
45.8449588	-108.4470894	3078787	Opportunity	How the new bridge connects through the northern edge of the Heights is an opportunity to create an economic and cultural center for the Heights.
45.74381	-108.486587	3078787	Opportunity	Biking and x-cross country trails in this region can provide a major new source of outdoor recreation.
45.784477	-108.5194364	3078787	Opportunity	Grand/ 6th Ave if developed with density multi-modal transportation in mind can become a major economic and residential center for Billings downtown and midtown.
45.7883674	-108.5153595	3078787	Opportunity	A bus or trolley connecting downtown, south side, up to the north elevation, including the medical corridor and the university can be the center of a multi-modal lifestyle development.
45.7572364	-108.5528246	3078787	Opportunity	There is room for multi-modal transit on Laurel Road. This should be connected to King Ave W.
45.7152911	-108.5646929	3078787	Opportunity	Biking and x-cross country trails in this region can provide a major new source of outdoor recreation.
45.7950747	-108.6015641	3079085	Opportunity	true turn signal not just a flashing yellow turn light.
45.8111589	-108.4137759	3079119	Opportunity	alternative route for becraft
45.7848406	-108.5066711	3079094	Opportunity	traffic calming measures on 27th and more greenscape
45.8418527	-108.481208	3079128	Opportunity	Create additional ways out of Skyview High School through the lower neighborhoods. Connect a few of the back roads.
45.7568897	-108.4850286	3079133	Opportunity	Bike ways to and from the river to downtown
45.7984318	-108.5277282	3079139	Opportunity	Blind intersection. Mirror needs to be placed across the street for traffic going left.

45.7820419	-108.5067569	3079076 Opportunity	Turn one-ways into two-ways to slow down traffic, reduce navigability difficulty/confusion, increase safety, and incentivize stopping/shopping downtown.
45.782663	-108.5098693	3079178 Opportunity	Switching the one way roads to 2-way would slow traffic and help retail downtown.
45.7812264	-108.5067365	3079178 Opportunity	Adding bike lanes downtown would attract more people and downtown living/culture
45.9679926	-108.6518394	3079617 Opportunity	-----
45.7951346	-108.6942398	3079693 Opportunity	Widen this road to make a good, safe way to get to other parts of Billings, (like Shiloh)
45.8208015	-108.6996471	3079693 Opportunity	We need another connector to the heights from the west end. That would be a great help .
45.7829851	-108.5069906	3079725 Opportunity	Two way streets downtown
45.7970517	-108.4869798	3079941 Opportunity	add/create a two-way cycletrack on 6ht Ave North to provide safe connection from Heights to Downtown.
45.7914919	-108.5278492	3079941 Opportunity	Virginia seems like a perfect street to add a bike lane.
45.7947535	-108.5278492	3079941 Opportunity	A missed opportunity when the intersection of Virginia and Poly was re-done. A roundabout would have worked much better than the "change". No one uses the left turn lane south of Poly, they still try to turn in the intersection and jam up traffic.
45.7974018	-108.5516755	3080043 Opportunity	-----
45.795068	-108.5328685	3080132 Opportunity	Opportunity to utilize the BBWA Canal for Bike and Pedestrian use.
45.8038112	-108.5619747	3080151 Opportunity	Improve parking, walkability, and biking between Zimmerman Trail and Black Otter Trail paths.
45.80408	-108.4840236	3080151 Opportunity	Consider roundabout intersection control at Aronson and Alkali Creek
45.7952688	-108.4864483	3080151 Opportunity	Remove parking from 4th Avenue North and consider adding another lane from the lane drop at North 13th (?) towards Exposition.
45.7976924	-108.4814916	3080151 Opportunity	Pedestrian crossing between the west and east side of Exposition.
45.803372	-108.4350027	3080159 Opportunity	-----
45.7703708	-108.527328	3080161 Opportunity	Really unsafe intersection
45.7936715	-108.489914	3080161 Opportunity	Consistent Speeds with Indianapolis Speedway
45.7801394	-108.5152428	3080201 Opportunity	Division is like a moat that keeps bicyclists from entering or exiting downtown to the west. This intersection with a bike box and contra flow lane would be ideal for bridging Division.
45.791994	-108.4719648	3080201 Opportunity	Cross river on trail attached to Interstate bridge.
45.7933977	-108.4936899	3080201 Opportunity	Rails to trails at rail spur.
45.7738238	-108.4877989	3080201 Opportunity	Connect city to river with trail at underpass.

45.8419153	-108.4677558	3080574	Opportunity	I happen to know there are a lot of people who live in Roundup and drive to Billings for work. Perhaps MET Transit could create a Park and Ride location where K-Mart used to be. The spaces should be clearly marked as such, and perhaps signage should be placed along Main St. indicating there is a park and ride location there.
45.8025884	-108.5380469	3080574	Opportunity	Quite a few people fly in and out of Billings. If MET Transit provided bus service to/from the airport, it could have the potential to greatly improve ridership
45.7814757	-108.5032923	3081154	Opportunity	Pedestrian/bicycle bridges over railroad tracks
45.7938779	-108.5297023	3081250	Opportunity	more frequent buses downtown from west end
45.7443175	-108.5562772	3082342	Opportunity	Mullowney Lane needs to be brought to city standards
45.741023	-108.5479945	3082342	Opportunity	Implement a multi-use trail on this ditch.
45.8093288	-108.4138307	3082342	Opportunity	Improve Johnson Lane south to an urban standard
45.7918562	-108.4718093	3082342	Opportunity	Provide multi-modal connection across the river
45.7970028	-108.4812936	3082342	Opportunity	Implement the EBURD recommendations for this corridor
45.7826345	-108.5064999	3082447	Opportunity	Making the streets in downtown two-way could improve the pedestrian safety downtown and allow for the creation of additional successful urban streets like Broadway.
45.7571211	-108.5534774	3082456	Opportunity	Make Old Laurel Road look inviting to community.
45.7914242	-108.4795692	3082456	Opportunity	Build a connector from Highway 3 to I-90
45.8131888	-108.4975795	3082462	Opportunity	Trail under power line
45.7853643	-108.5024904	3082463	Opportunity	Run the buses system on natural gas rather than diesel. Or use electric buses for cleaner air in the area and smaller carbon footprint.
45.792262	-108.5522776	3082461	Opportunity	Pedestrian/Bicycle facility along BBWA Canal is a significant opportunity for people to travel through the community safely and enjoy the water feature and "greenway" feel of this iconic canal corridor.
45.764993	-108.4765998	3082463	Opportunity	Add a bike/ped bridge to cross the yellowstone river over to the Pictograph caves
45.7909142	-108.4915739	3082472	Opportunity	bring downtown to this area, would make it much safer and would remove the scary zone between downtown and the heights
45.7818754	-108.511273	3082463	Opportunity	Evaluate alternatives to bring in more electric charging stations for cars. Perhaps brainstorm ideas to bring in businesses with electric charging stations. This appears to be the way of the future.
45.7686775	-108.5084384	3082461	Opportunity	The massive ROW on State Ave. could easily accommodate bike lanes on this corridor and improve safe travel options for cyclists in this part of town.
45.7945362	-108.4756511	3082461	Opportunity	This entryway into Billings is non-welcoming, dirty, and poorly kept. Ironically, a good portion of the adjacent property is owned by the County and MDT. DO these entities have no civic pride or desire to be good stewards of their property on this high-traffic corridor into our community? We can do better.
45.8399393	-108.4382927	3082487	Opportunity	continue to develop more to the east and less to the west where farmland is being removed for useless apartment buidlings
45.7738861	-108.5347664	3082504	Opportunity	Some street lights take sooooooo long and at some times of the day, there is no traffic. Installing lights that are sensitive to the presence or absence of vehicles and regulating traffic flow accordingly, at least at some parts of the day, would make travel across Billings quicker and considerably less frustrating.

45.8040105	-108.5448883	3082880 Opportunity	-----
45.793429	-108.542813	3082945 Opportunity	Close the 11th Street Bridge to pedestrian only traffic. This will reduce/eliminate speeding vehicles through this area around Highland Elementary as children are walking to/from school
45.7382085	-108.5565673	3082967 Opportunity	Development in this area of town brings the need for safe pedestrian travel. Schools in the area and absolutely nowhere to walk except the road. Builders and property owners should be required to develop side walks from the intersection at I-90 to the most populated area and continue to the schools.
45.7132578	-108.6853079	3083041 Opportunity	Build up everything between Billings and laurel to add to our community so that its similar and competes with Bozeman and belgrade
45.8247471	-108.3867598	3083094 Opportunity	-----
45.8241511	-108.4564888	3083178 Opportunity	-----
45.8261054	-108.4077832	3083213 Opportunity	-----
45.7957031	-108.5194885	3083259 Opportunity	BBWA canal ROW is a great opportunity to create a connected bike ped trail from the far west end all the way into downtown.
45.7876836	-108.5038458	3083259 Opportunity	The old 5th street ROW is an opportunity to create bike ped connection eastward into EBURD and MetraPark
45.7882378	-108.4767517	3083474 Opportunity	Don't force the liability of corvette power plant location to follow the new investor.
45.7726744	-108.598978	3083474 Opportunity	Sell off some city park land that the city is not developing or maintaining. Use the proceeds to go toward new infrastructure.
45.7391116	-108.5676346	3083522 Opportunity	Improve this area. Lots of new development and folks living in this part of town
45.7806165	-108.5041186	3083522 Opportunity	Continue efforts to make Billings' downtown a special place for our community.
45.8047685	-108.5955345	3083539 Opportunity	Improve Zimmerman Trail Access
45.789515	-108.5011238	3083689 Opportunity	paint parking areas along both 4th and 6th to make these streets feel narrower, slow traffic and become more pedestrian friendly
45.8285471	-108.5376114	3084183 Opportunity	Need a new roadway connecting the Heights to the rest of town. This has been talked about, but lets do it!
45.7649182	-108.5357212	3084479 Opportunity	Connecting 8th W and SBB would greatly increase traffic flow.
45.7143002	-108.5119998	3084479 Opportunity	Another entrance into Briarwood would ease traffic volume here.
45.7167573	-108.5044574	3084479 Opportunity	A sidewalk on Prestwick and Brairwood as whole would make it safer for pedestrians.
45.7944763	-108.4827959	3085457 Opportunity	Make 2nd Ave N a 1-way going east so there is another way to get to Main Street at 5 pm.
45.7854045	-108.5047533	3085839 Opportunity	Partner with the hospitals so that their employees can take public transportation. Everyday there are way too many single person cars going to the hospital area
45.7810098	-108.5296809	3086153 Opportunity	If Lewis is going to continue to be the bikeway into downtown it needs a dedicated lane east of 8th St so that bikes and cars don't have to share space. I would recommend eliminating on street parking between 8th St and Division. The majority of houses have garages and there is significant on street parking on the numbered streets. Eliminating on street parking to facilitate a bike lane here would enable safer bike traffic. It's worth noting that even though this is officially a bike space I consistently see riders making use of the sidewalks which suggests that we haven't yet provided sufficient safety to make riders feel safe in the streets.

45.7840028	-108.5111383	3086153	Opportunity	It would be nice to have a bike lane that crosses downtown from north to south. It seems that 27th is probably too high traffic for such a lane. Both Broadway and 29th have the advantage of crossing the railroad tracks and this would allow them to help connect the Southside to downtown, but they both have significant on street parking that would be lost if such a lane were created. So maybe make a lane and a pedestrian bridge on 30th? We could make 30th a 2 way with bike lanes on either side, perhaps?
45.7840028	-108.5111383	3086153	Opportunity	I'm not entirely sure where the placement should be but it would be great to have bike lanes moving north to south in downtown.
45.7818154	-108.5117964	3086153	Opportunity	It would be useful to have more bike lanes in the downtown area generally. My understanding of relevant research is that re-purposing parking for bike lanes does not hurt local businesses, and making it easier for riders to access to the downtown area would likely improve the value of homes in the Central and Southside neighborhoods since those are the areas closest to downtown. If we want to pursue in-fill development and support the downtown over the long term I think that additional bike infrastructure would be a wise investment.
45.7590373	-108.5062706	3086177	Opportunity	The South Side has a fairly dense population. Can hours be extended for bus service?
45.7432262	-108.7493431	3086177	Opportunity	Billings - Laurel shuttle. Any hope of getting a workers schedule there?
45.7781963	-108.5285865	3086177	Opportunity	Billings has or will have 50% of its population over 60. Lets get the public transit needs survey to those folks. The hospitals finally stopped their shuttle lets work around that and hit them for sponsored.
45.8083584	-108.4630119	3087520	Opportunity	A pedestrian/bike trail exists from the Heights to South 27th, but it would be great to have a better, more direct, SAFE trail to downtown Billings -- perhaps along 6th Ave. N. The problem is the traffic from the heights onto 6th is often traveling at a speed greater than the posted speed limit and is very dangerous for bicyclists and pedestrians alike. Some kind of safety barrier is needed between a trail and 6th Ave. N. to at least North Park area or 27th Street.
45.802136	-108.6022258	3087580	Opportunity	Bike trail up Zimmerman
45.7839429	-108.5079838	3087580	Opportunity	Better publicized bus schedules
45.7773718	-108.6522641	3088333	Opportunity	Slow down make safer
45.826065	-108.4722816	3088930	Opportunity	Main street is ugly and impedes commerce
45.7806821	-108.5753274	3089848	Opportunity	I think it would be incredible if Lewis could be a designated bicycle route, where bicycles commuters were encouraged to travel here. That way we wouldn't see bikes on streets like Grand and Broadwater. I lived in Portland, OR and they had a street just one block south of a major road for this purpose. It let bikes commute without car interference and let cars commute without bike interference. Of course if you lived on that street, you could drive on it, but it was marked in a way to encourage you to drive one block north or south.
45.7599955	-108.6418831	3089864	Opportunity	Before westward expansion of residential and commercial development occurs, a plan for street improvements and amenities (landscaping and pathways) can be prepared.
45.7855289	-108.5085692	3089899	Opportunity	Opportunity to make the downtown area more inviting, a hub of pedestrian activity
45.770773	-108.6187946	3089981	Opportunity	There is an opportunity in the far west-end to develop more bus transit routes. However, it must be convenient and have longer hours
45.798946	-108.5392619	3089981	Opportunity	Opportunity to direct more services for both MSUB and RMC students.
45.7897899	-108.5108949	3089981	Opportunity	Opportunity to provide more services to the hospital corridor.
45.7838909	-108.6443636	3090050	Opportunity	Slower speed limit

45.7938026	-108.4586701	3090089 Opportunity	I expect at some point in the future there may be a major accident on the off ramp here. Folks coming over the bridge cannot see the traffic that is sometimes backed all the way along the exit ramp and onto the interstate
45.7908328	-108.4981865	3090182 Opportunity	multi-modal corridor from downtown to MetraPark through EBURD
45.7509505	-108.6195008	3090998 Opportunity	-----
45.8466436	-108.4618155	3092104 Opportunity	Place a sams or larger store in this location. Capture the business from the North-east
45.8416135	-108.4680759	3092308 Opportunity	connect the bike path with the lake elmo area and the hiltop bike paths to create a functional loop
45.7066822	-108.4992416	3092999 Opportunity	Bus Service to Briarwood