

Figure 4: Youth Population - Jefferson County

People per Acre

- 0.00 - 0.50
- 0.51 - 1.00

- CET Route 20
- CET Route 22
- City Boundary
- Dial-a-Ride Service Area

Data Source: ACS 17 5YR B01001

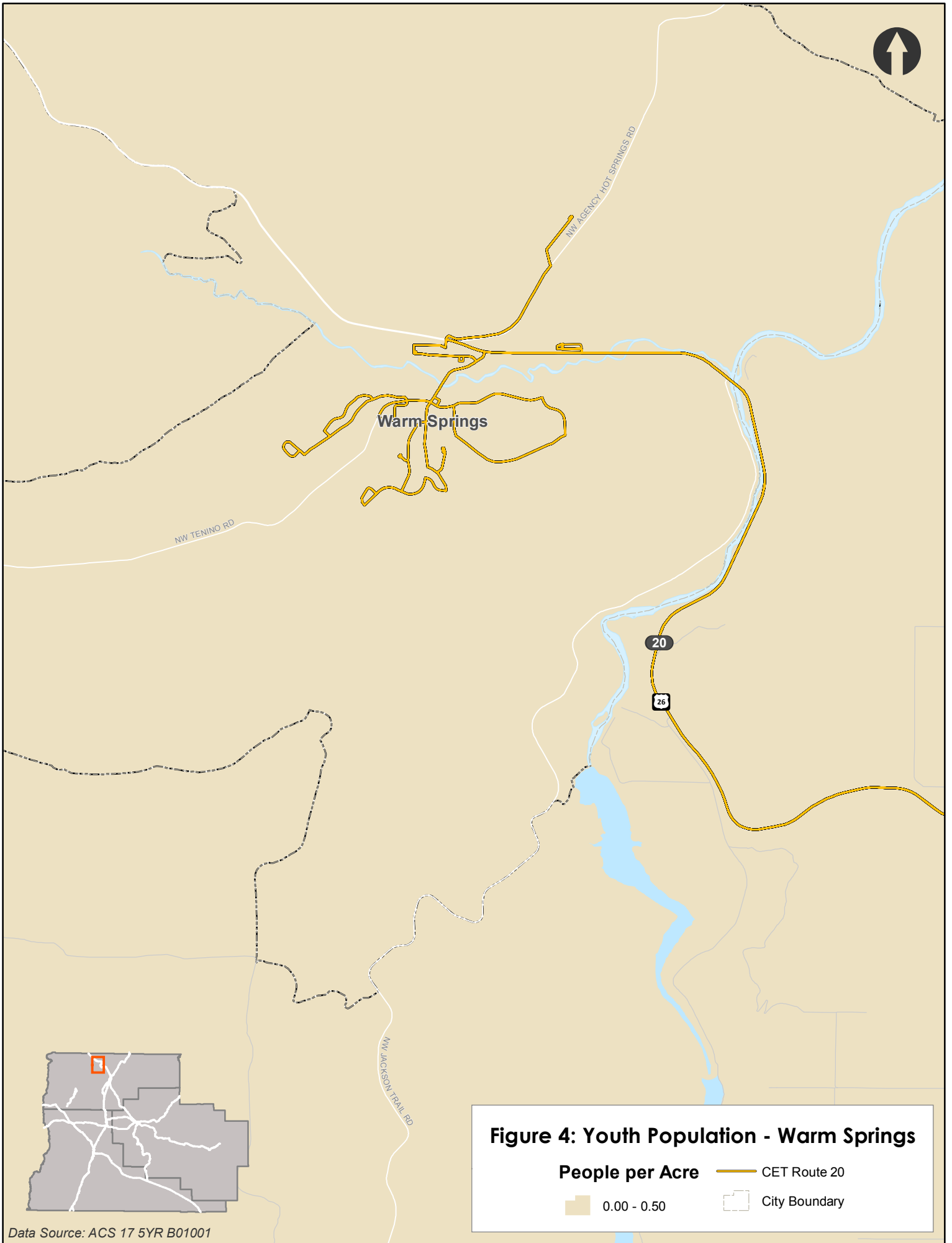


Figure 4: Youth Population - Warm Springs

People per Acre — CET Route 20
 0.00 - 0.50 City Boundary

Data Source: ACS 17 5YR B01001

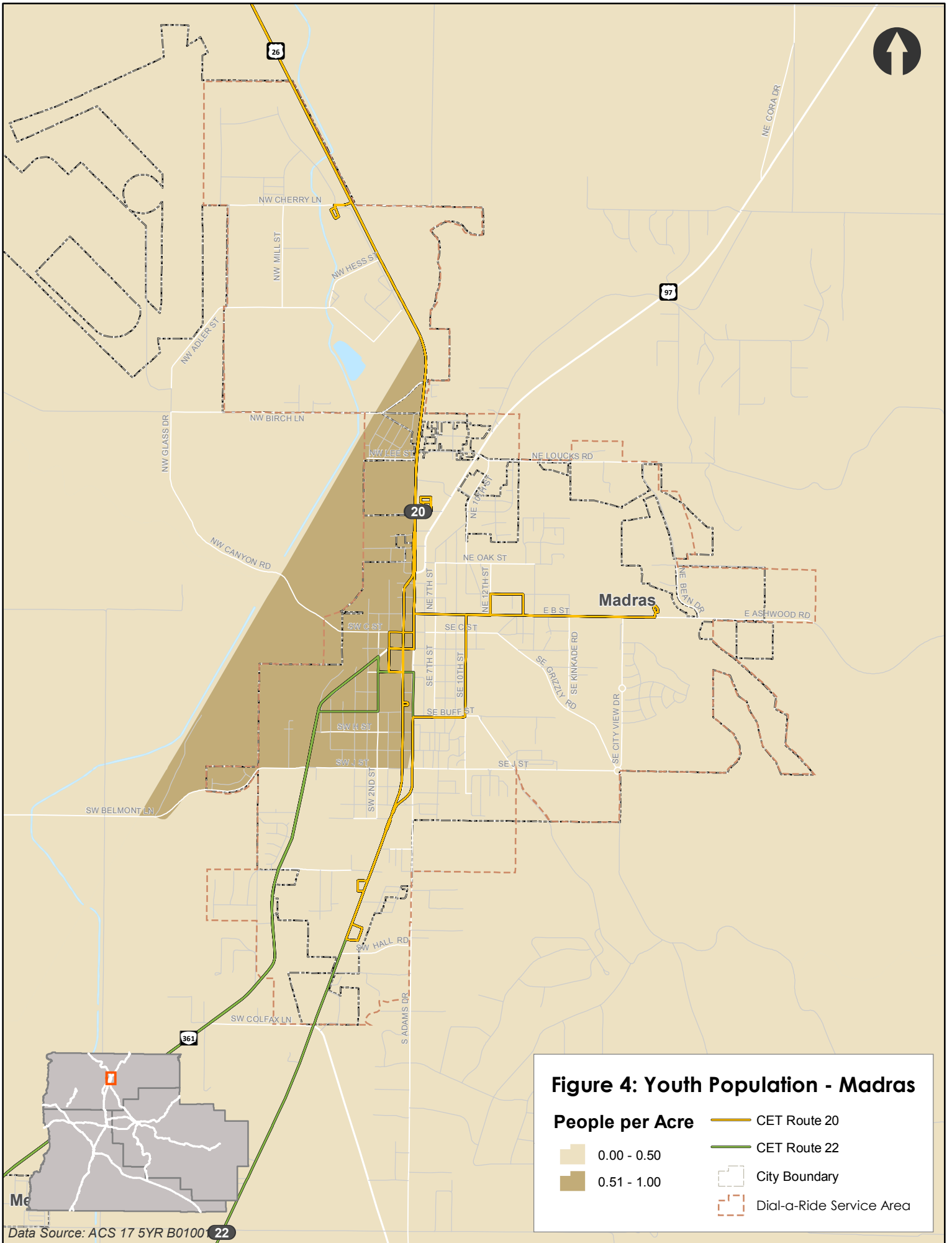


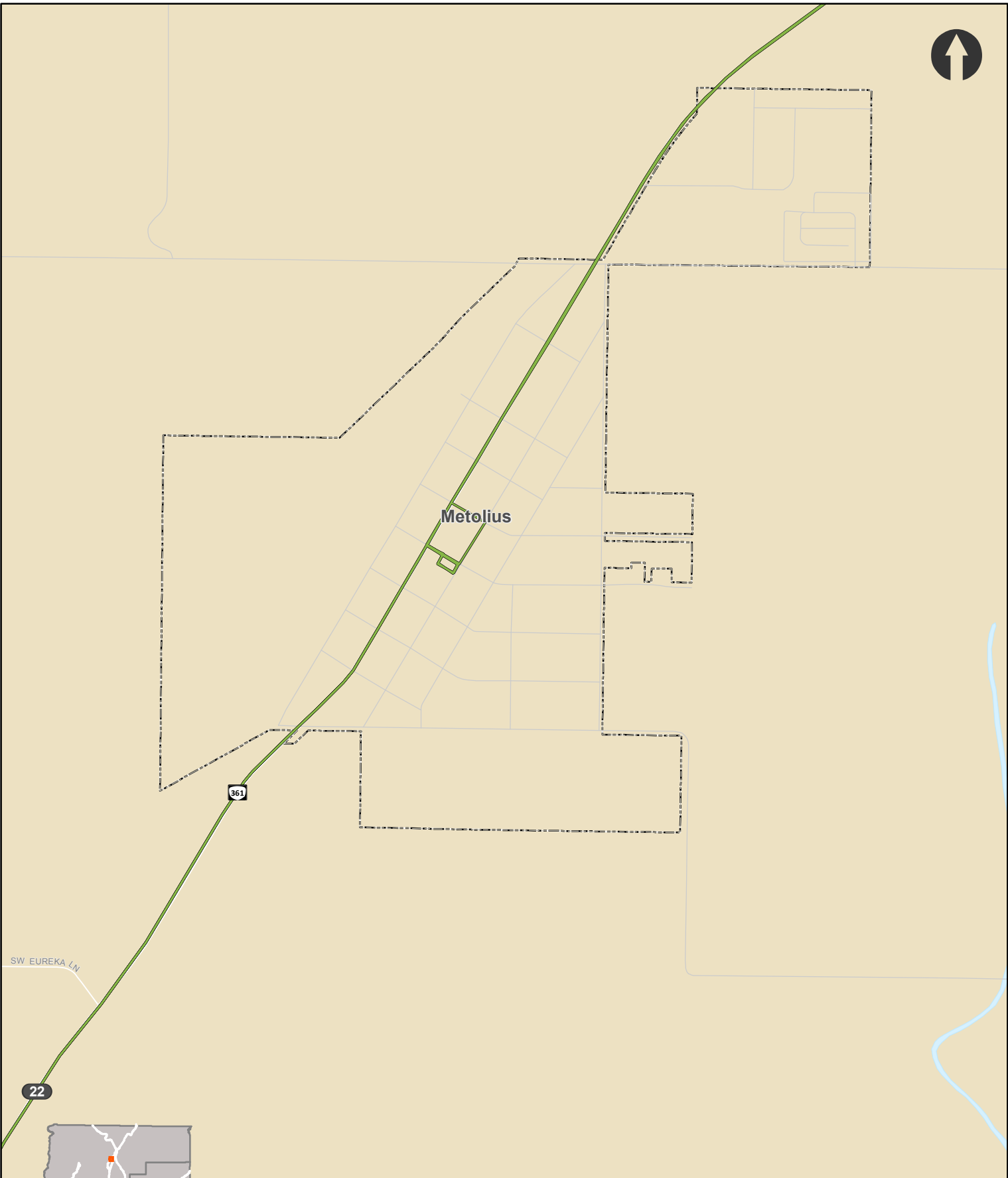
Figure 4: Youth Population - Madras

People per Acre

- 0.00 - 0.50
- 0.51 - 1.00

CET Route 20
 CET Route 22
 City Boundary
 Dial-a-Ride Service Area

Data Source: ACS 17 5YR B0100 **22**



Metolius

361

22

SW EUREKA LN

Figure 4: Youth Population - Metolius

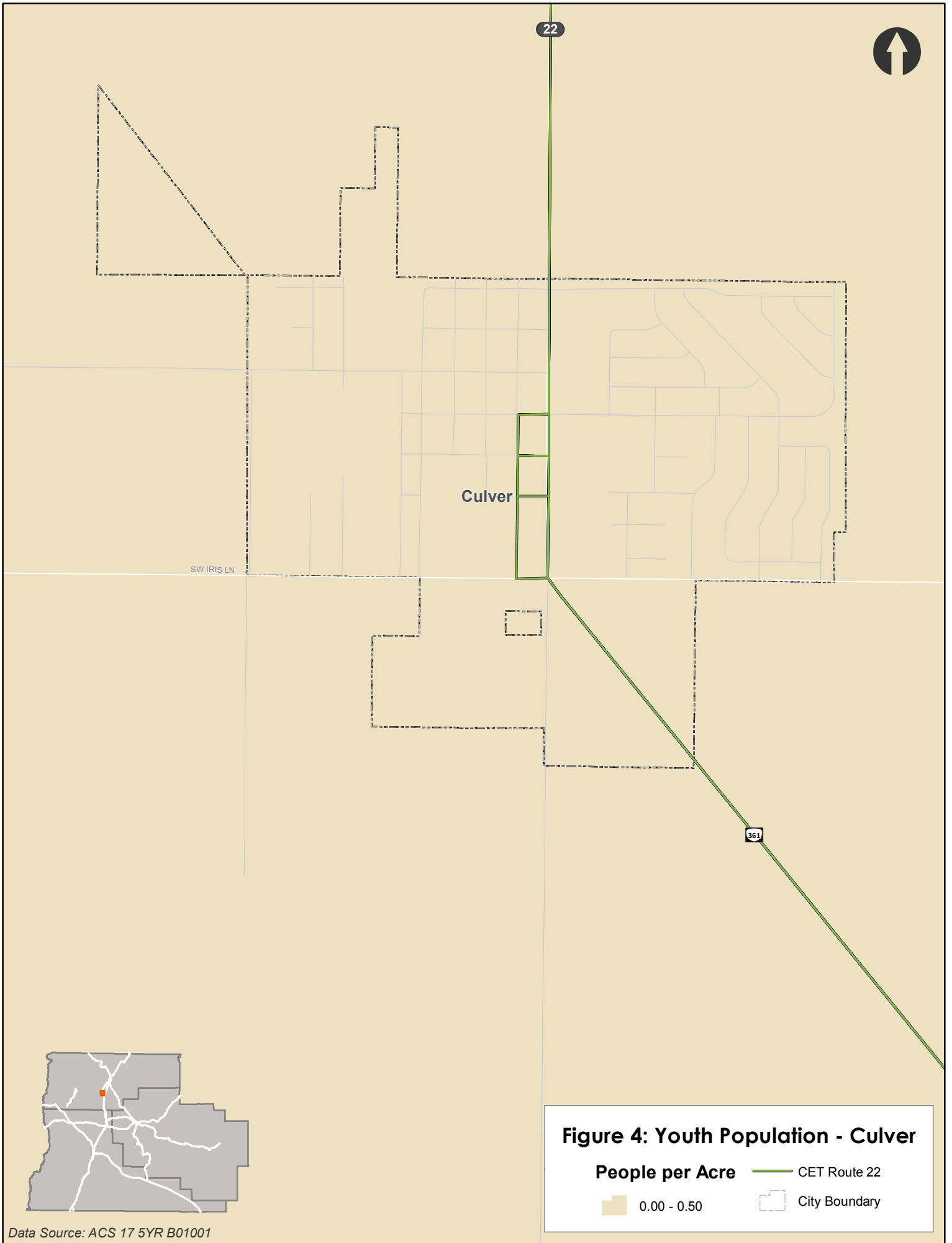
People per Acre

0.00 - 0.50

CET Route 22

City Boundary

Data Source: ACS 17 5YR B01001



22



Culver

SW IRIS LN

361

Figure 4: Youth Population - Culver

- 0.00 - 0.50
- CET Route 22
- City Boundary

Data Source: ACS 17 5YR B01001

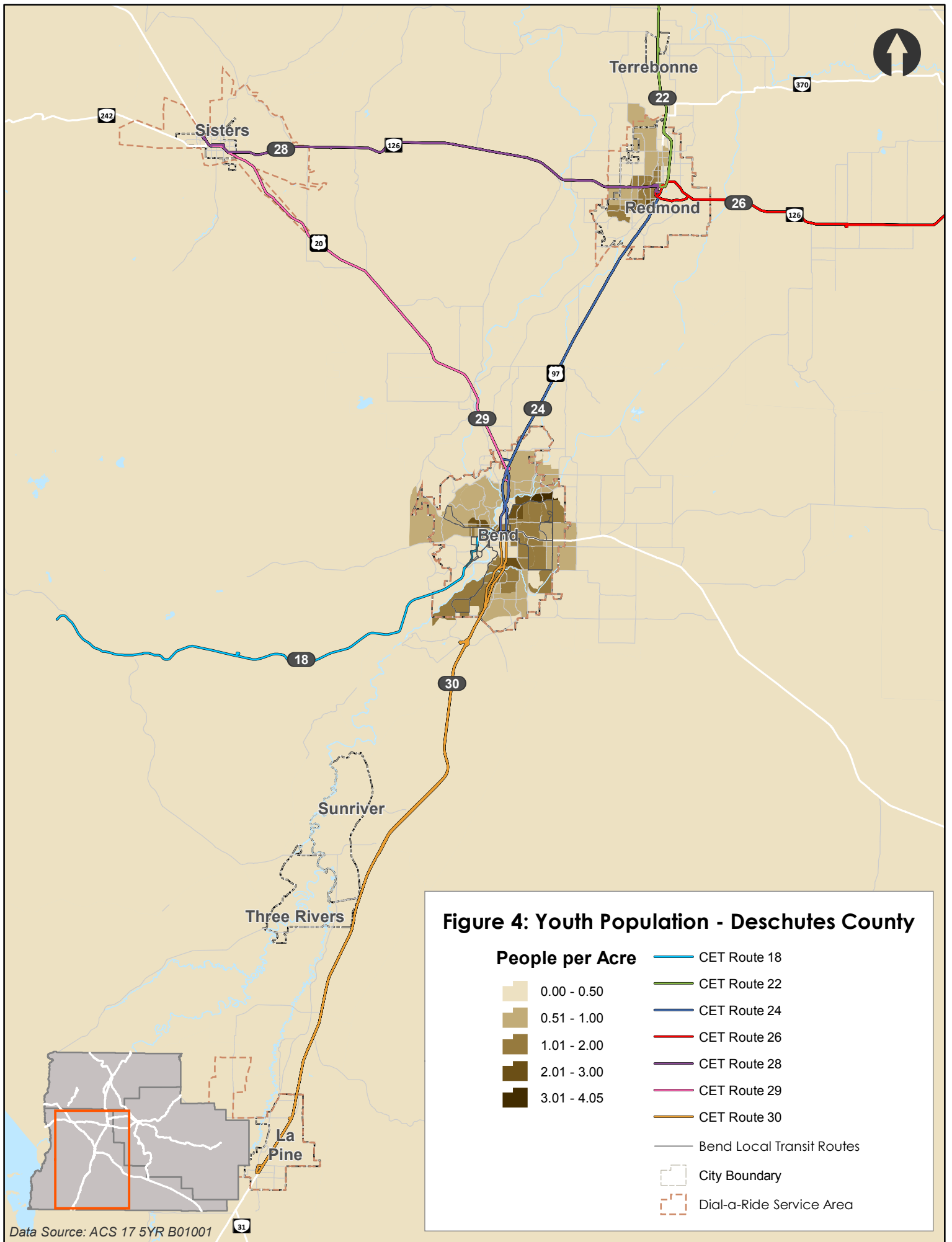
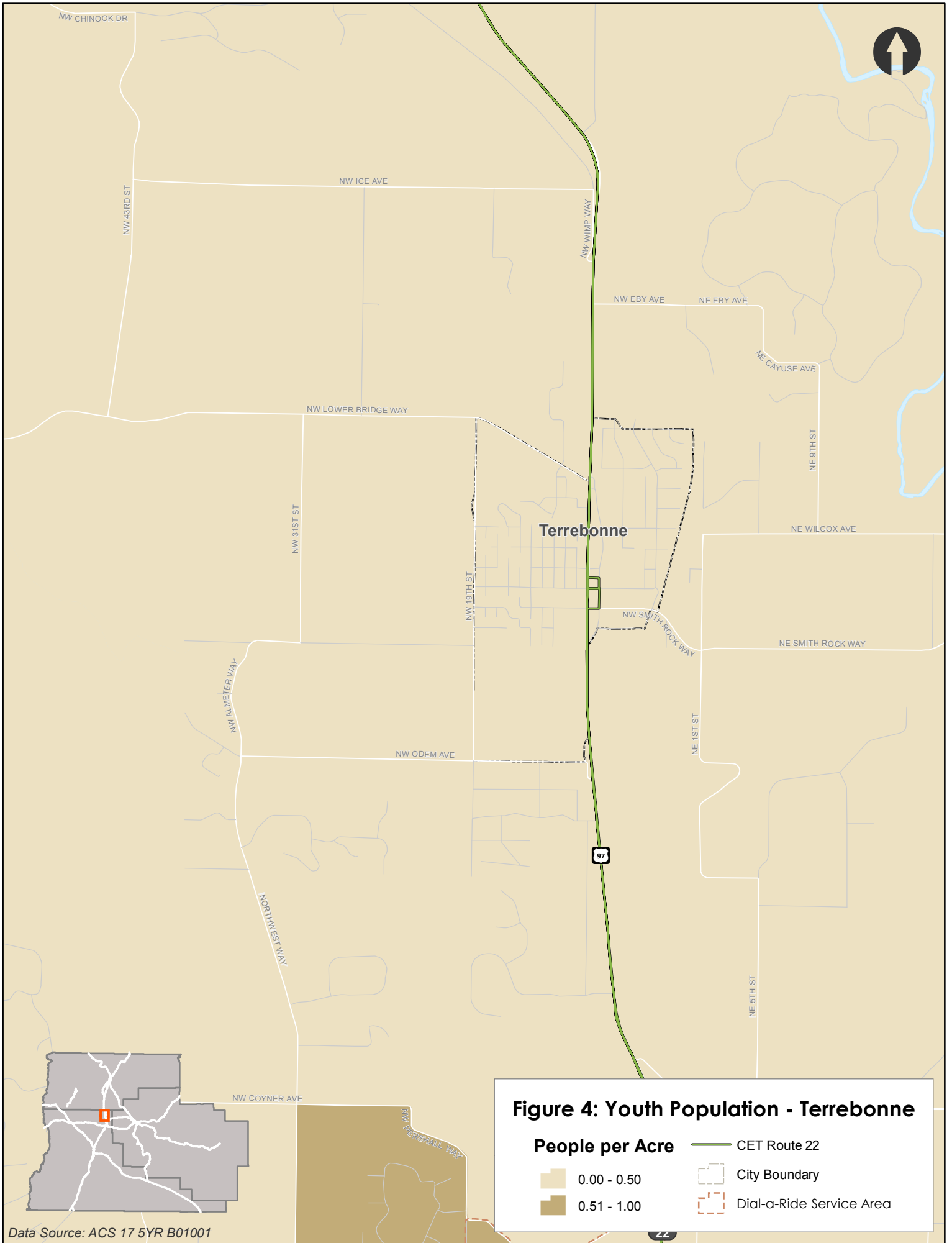


Figure 4: Youth Population - Deschutes County

People per Acre

- 0.00 - 0.50
- 0.51 - 1.00
- 1.01 - 2.00
- 2.01 - 3.00
- 3.01 - 4.05

- CET Route 18
- CET Route 22
- CET Route 24
- CET Route 26
- CET Route 28
- CET Route 29
- CET Route 30
- Bend Local Transit Routes
- City Boundary
- Dial-a-Ride Service Area



Data Source: ACS 17 5YR B01001

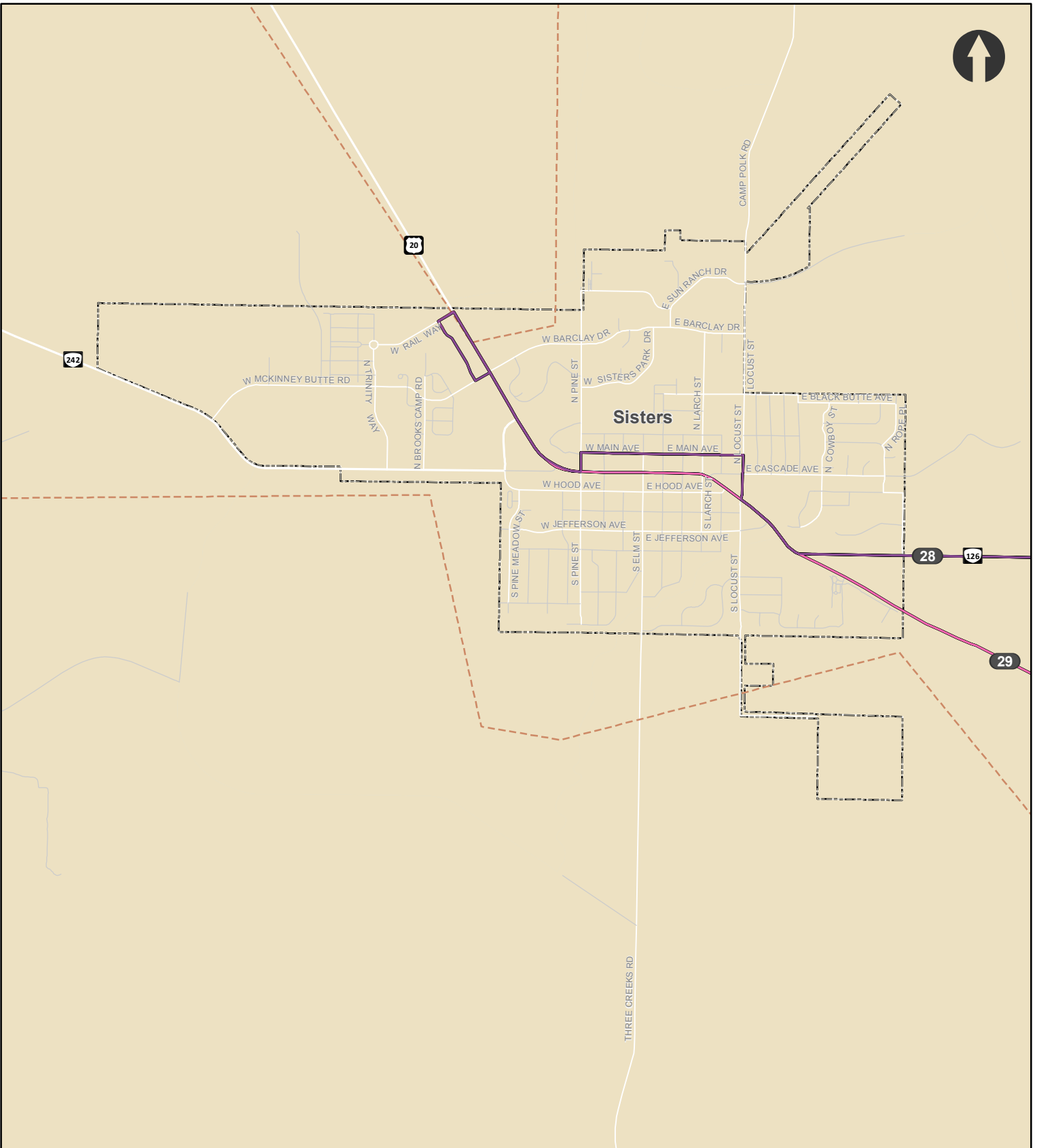
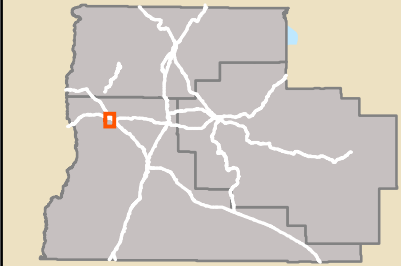


Figure 4: Youth Population - Sisters

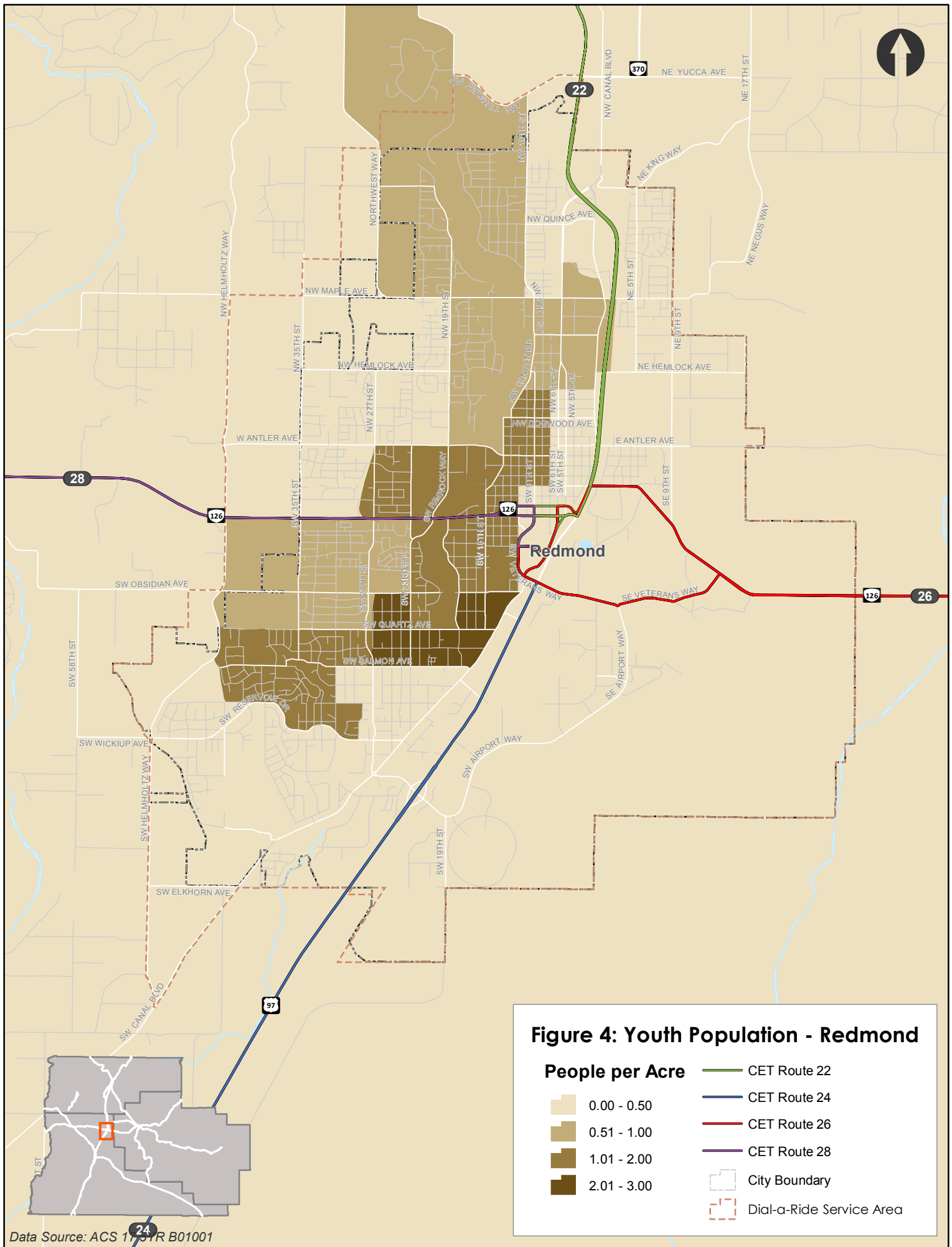
People per Acre

- 0.00 - 0.50

- CET Route 28
- CET Route 29
- City Boundary
- Dial-a-Ride Service Area



Data Source: ACS 17 5YR B01001



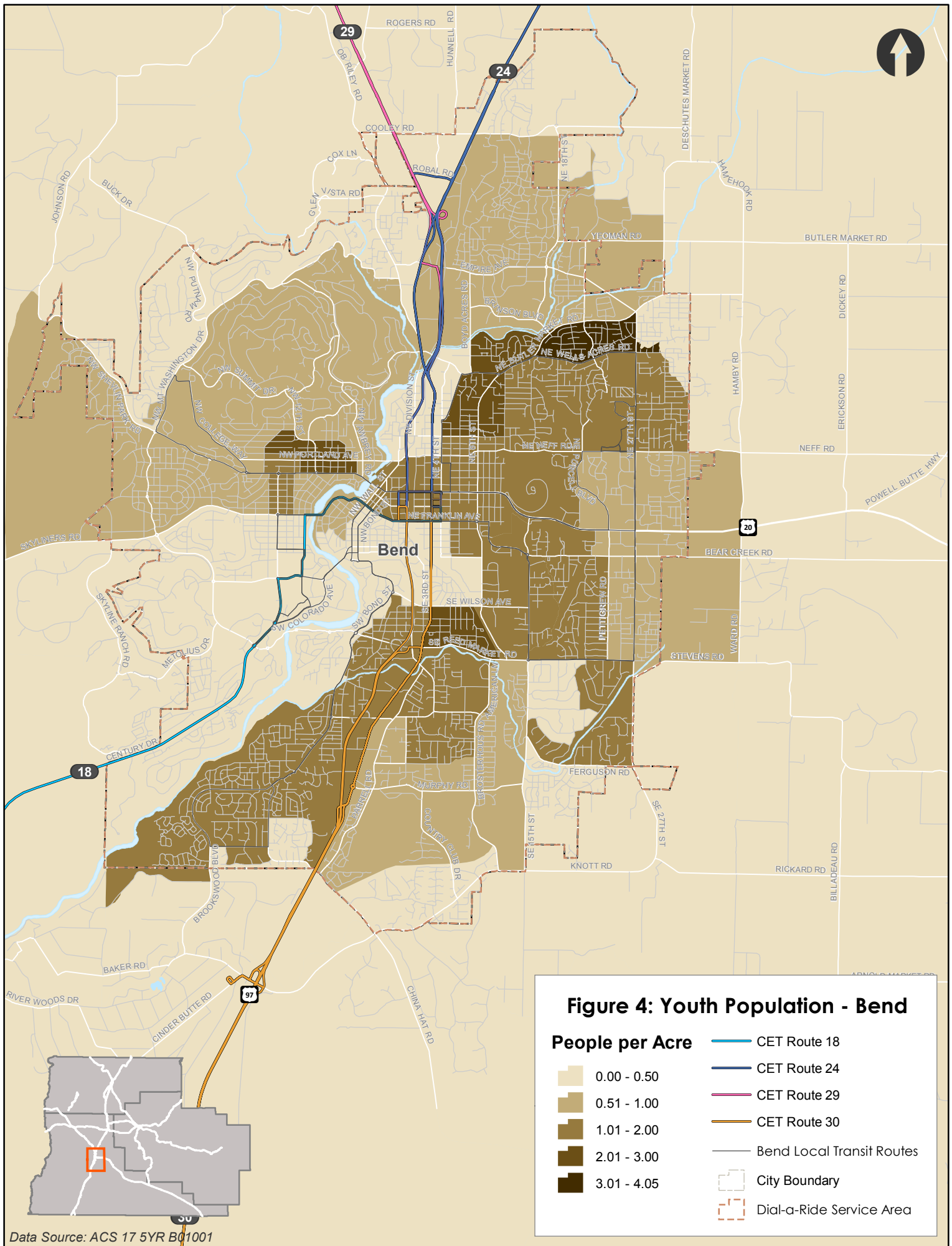
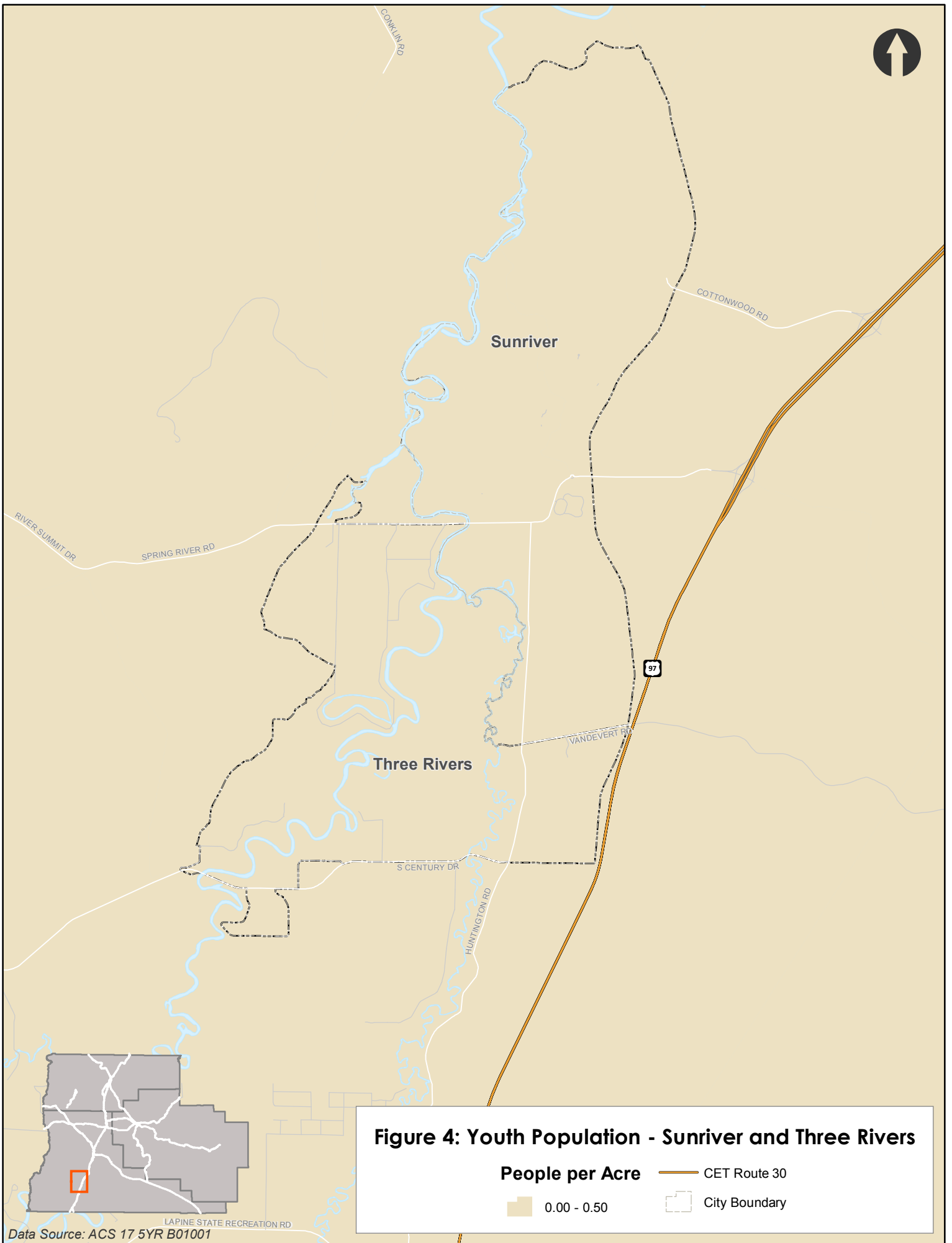
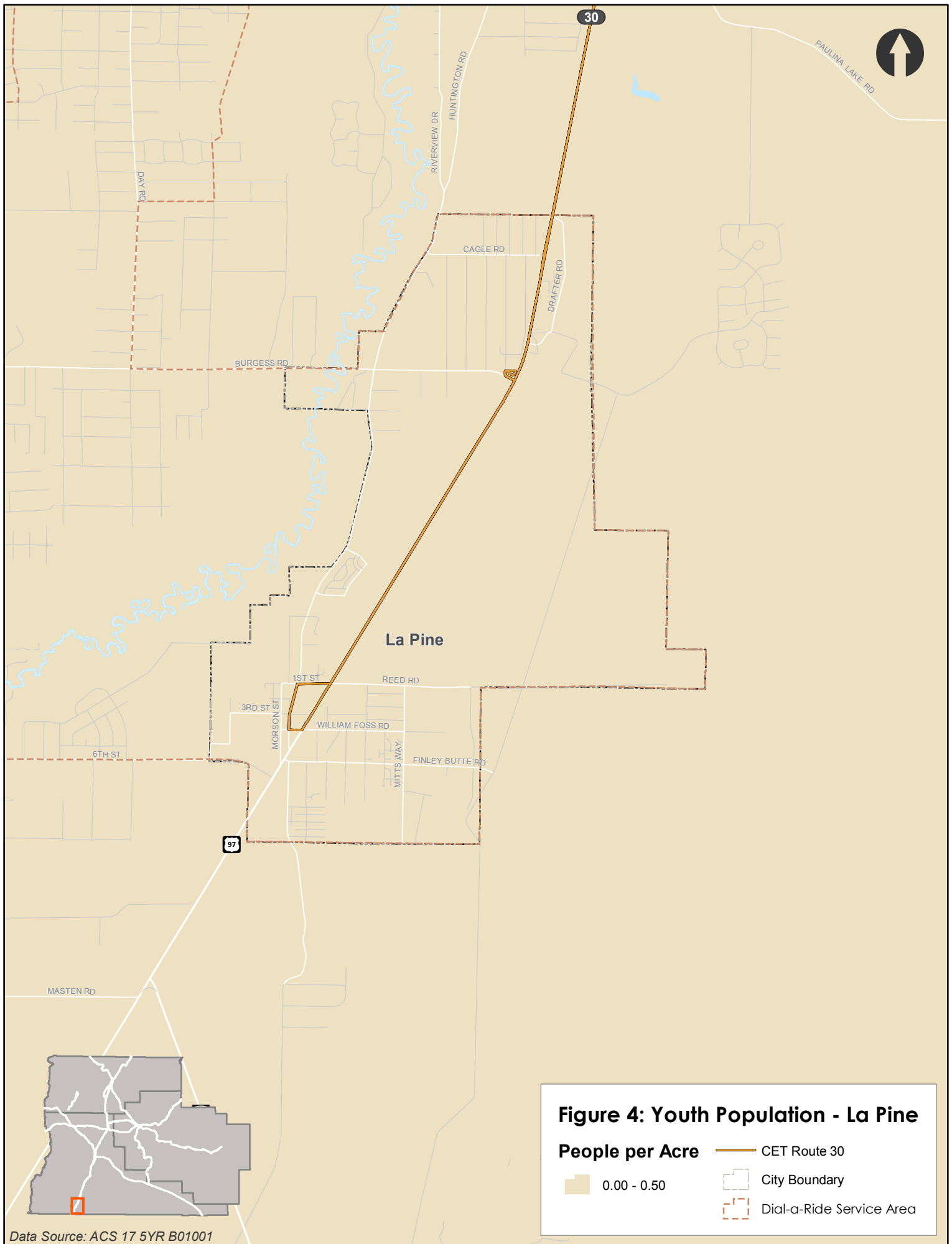


Figure 4: Youth Population - Bend

- | People per Acre | | | |
|-----------------|-------------|--|---------------------------|
| | 0.00 - 0.50 | | CET Route 18 |
| | 0.51 - 1.00 | | CET Route 24 |
| | 1.01 - 2.00 | | CET Route 29 |
| | 2.01 - 3.00 | | CET Route 30 |
| | 3.01 - 4.05 | | Bend Local Transit Routes |
| | | | City Boundary |
| | | | Dial-a-Ride Service Area |

Data Source: ACS 17 5YR B01001





Data Source: ACS 17 5YR B01001

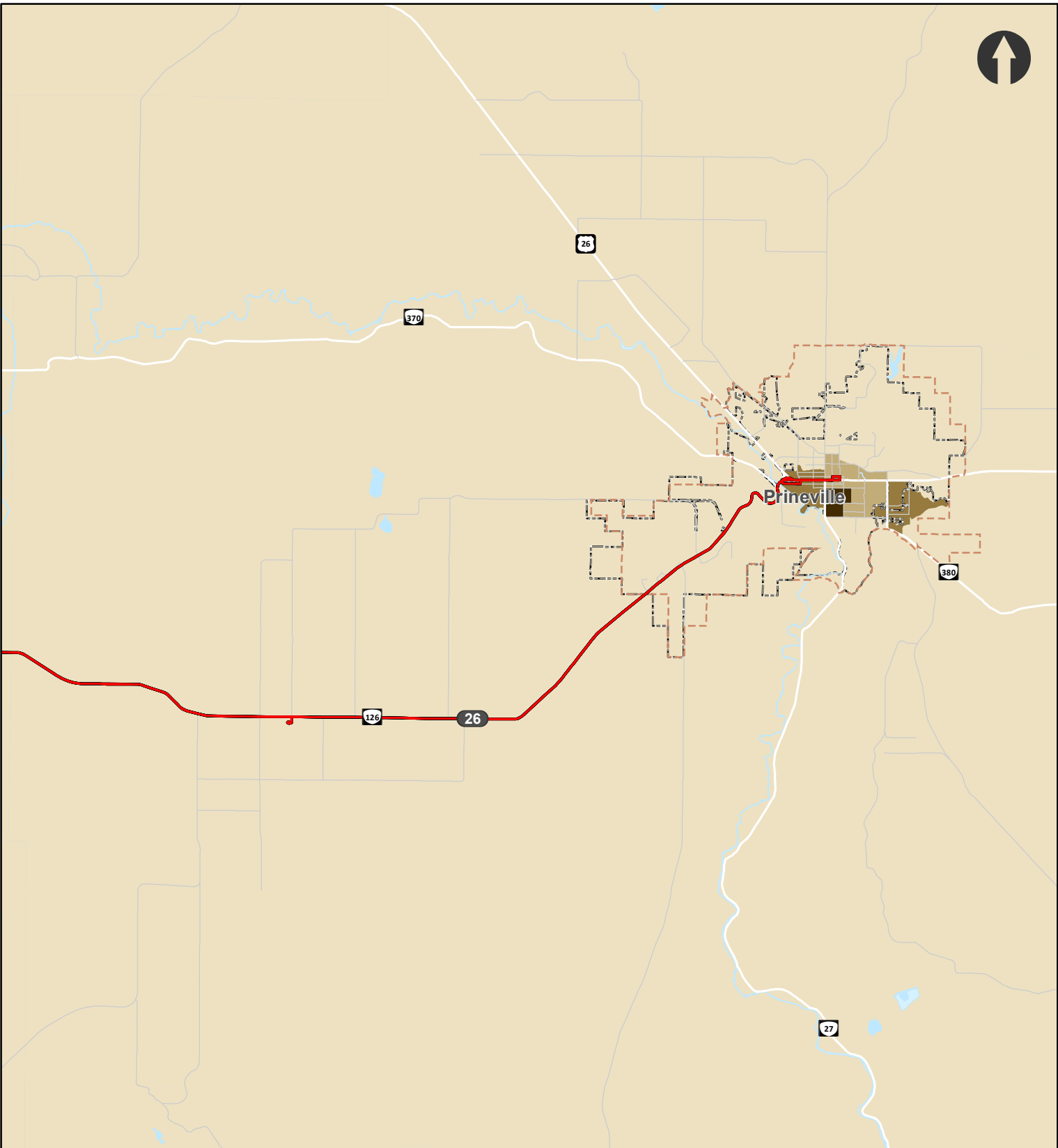
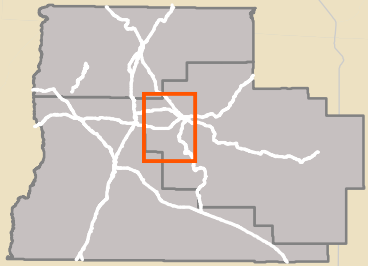


Figure 4: Youth Population - Crook County

- | | | | |
|--|-------------|--|--------------------------|
| | 0.00 - 0.50 | | CET Route 26 |
| | 0.51 - 1.00 | | City Boundary |
| | 1.01 - 2.00 | | Dial-a-Ride Service Area |
| | 3.01 - 4.05 | | |



Data Source: ACS 17 5YR B01001

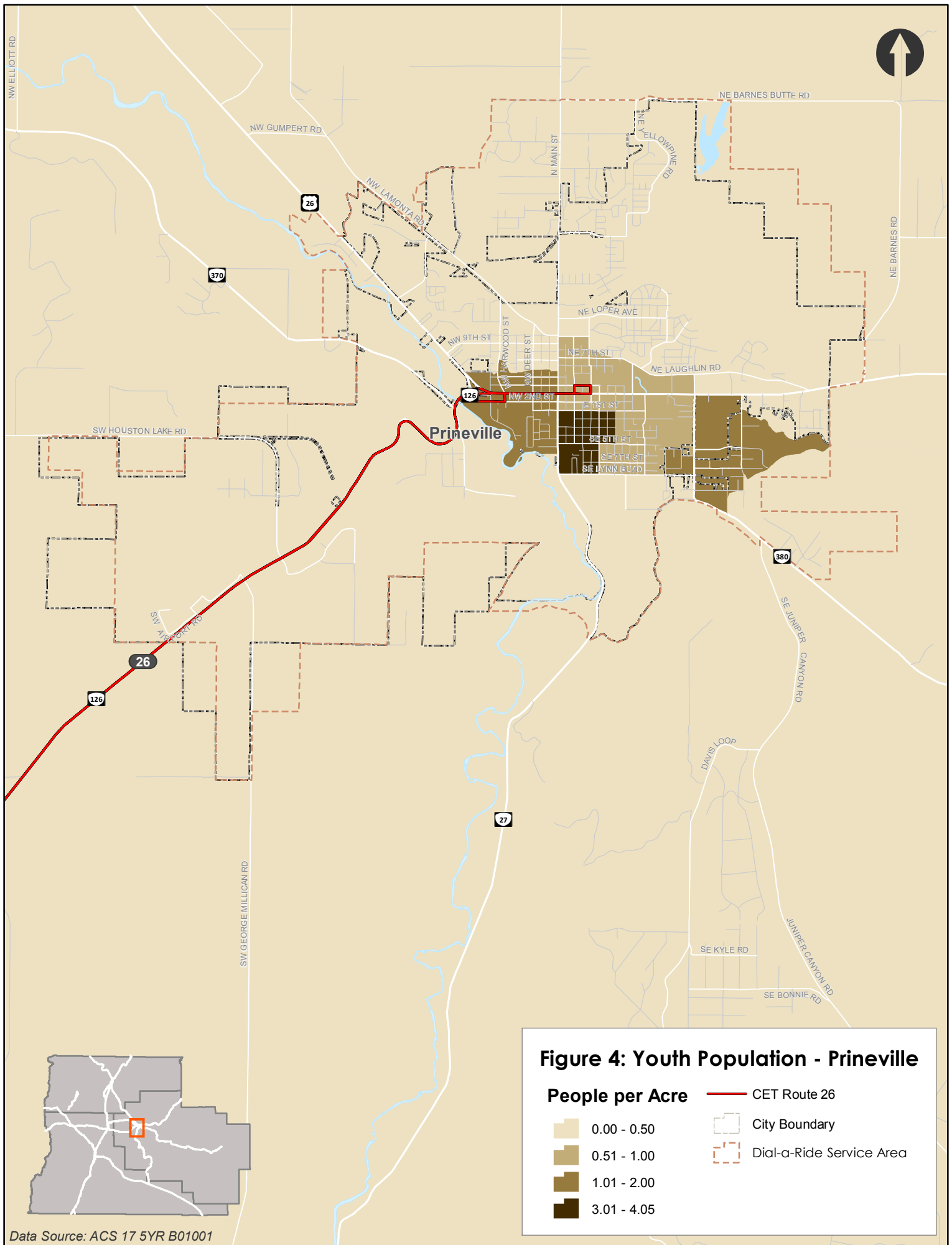
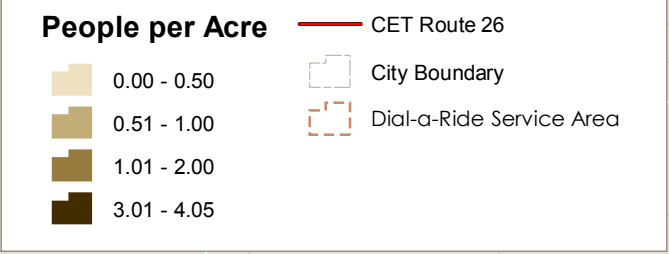


Figure 4: Youth Population - Prineville



Data Source: ACS 17 5YR B01001