

TRANSPORTATION SYSTEM PLAN

City of The Dalles &
Oregon Department of
Transportation



TAC/PAC Meeting #1 | 11/18/15

Meeting Agenda

- Introductions
- Project Overview
- Project Goals & Objectives
- Plans & Policy Review
- Existing Conditions Discussion
- Existing Transportation Issues Workshop
- Review of Upcoming Dates

Introductions

- Name
- Background
- What are your interests in relation to the project?
- How would you define a successful project?
- What are your top 2 transportation issues in The Dalles?

Members

Public Advisory Committee Members

- City of The Dalles
- Oregon Department of Transportation (ODOT)

Technical Advisory Committee Members

- Bicycle Advisory Committee



PROJECT OVERVIEW

Project Overview

- Project Purpose
- Project Study Area
- Project Schedule
- Roles & Responsibilities
- Project Outcomes



Project Overview

Project Schedule

	Aug	Sept	Oct	Nov	Dec	Jan	Feb	Mar	Avr	May	June	July	Aug
TAC/PAC Meetings				●		●		●		●			
Plans & Policy Review	■												
Goals & Objectives	■												
Existing Condition Inventory and Analysis	■												
Future Systems Conditions				■									
Alternatives Analysis and Funding Program					■								
Preferred Alternatives						■							
Draft TSP								■					
Adoption											■		

Project Overview

Roles & Responsibilities - TAC & PAC Members

- Attend joint TAC/PAC meetings
- Review draft reports prior to joint TAC/PAC meetings
- Provide written comments to the City by Tuesday following the meeting
- Attendance at Public Workshops (optional)

Project Overview

Roles & Responsibilities – Review Process

Approximate Week in Month	Mon	Tues	Wed	Thu	Fri
1	Consultant provides draft document to City and ODOT PM			City and ODOT PM provide comments on the draft document to Consultant	
2			Consultant provides draft document to TAC and PAC		
3			Joint TAC/PAC Meetings Consultant provides overview of draft reports and leads discussion on key issues and decisions		
4		TAC and PAC written comments due to City			City provides written summary of TAC and PAC comments to Consultant Team
5			Consultant Team delivers Final Technical Memorandum or Draft TSP		

Project Overview

Project Outcomes - Website

TheDallesTSP.com

HOME	LATEST NEWS	MEETINGS	PROJECT TEAM MEMBERS	DOCUMENTS	INTERACTIVE MAP		SUBSCRIBE	CONTACT
------	-------------	----------	----------------------	-----------	-----------------	--	-----------	---------

Interactive Map

We want your feedback!

The link below provides access to a map showing the project area. In addition, this map allows you to click on a particular point of interest and leave a comment.

As the project proceeds, this map will be updated with with additional project related information. Check back often!

[PROJECT INTERACTIVE MAP](#)

HOME	LATEST NEWS	MEETINGS	PROJECT TEAM MEMBERS	DOCUMENTS	INTERACTIVE MAP		SUBSCRIBE	CONTACT
------	-------------	----------	----------------------	-----------	-----------------	--	-----------	---------

Documents

Please click on Draft Documents on the right to view Draft Technical Memorandum #2: Goals and Objectives. Thank you for your input! Advisory Committee Member comments are requested by November 25.

Draft Technical Memorandum #3 will be provided on November 11 for Advisory Committee review.

We'll frequently be posting new documents as the project continues.

More Information

- [Schedule](#)
- [Draft Documents](#)
- [Final Documents](#)



HOME	LATEST NEWS	MEETINGS	PROJECT TEAM MEMBERS	DOCUMENTS	INTERACTIVE MAP		SUBSCRIBE	CONTACT
------	-------------	----------	----------------------	-----------	-----------------	--	-----------	---------

The Dalles Transportation System Plan



Help plan the future of transportation in your city!

The Future of Travel in The Dalles

What: The City of The Dalles recognizes transportation is key to the community's economic and social well-being and that the 1999 Transportation System Plan (TSP) needs to be updated. This Project is a comprehensive update that will ensure the transportation system supports the economic and community goals of the City. The Updated TSP will support the implementation of The Dalles Comprehensive Plan by developing a transportation system for all modes that will support the planned residential, commercial and industrial growth in the City.

Where: The Project area is the land within City's Urban Growth Boundary. Roadways fall under the jurisdictions of the City, Wasco County and the Oregon Department of Transportation (ODOT).

Why: All Oregon cities and counties are required to have a TSP and update it every 10 years. Through this effort, and with your help, we will identify the best ways to build upon our existing system and make smart future investments that increase choice for getting around.

How: In addition to technical work (data gathering, projections, traffic modeling), the process includes extensive public involvement. There will be opportunities for public comment and participation throughout this process.

Click [HERE](#) to provide your feedback!

Upcoming Meetings

[Advisory Committee Meeting #1](#)
Wednesday, November 18th, 2015 from 3:30 at The Dalles City Hall - Council Chambers

Latest News

[THE DALLES TSP IS UNDERWAY!](#)
Written 3 months ago



PROJECT GOALS & OBJECTIVES

Project Goals and Objectives

Goals

- Safety and Mobility
- Accessibility and Connectivity
- Integration
- Economic Development

Evaluation Criteria

Criteria Number	Evaluation Criteria	Evaluation Measures
Goal 1: Safety and Mobility - Ensure a safe and efficient transportation system for all users in a state of good repair.		
1A1	Estimated number of fatal or serious injury crashes.	To what extent does the alternative reduce the estimated frequency of fatal and serious injury crashes? Whenever possible, estimate the change in predicted crash frequency using Safety Performance Functions from the Highway Safety Manual calibrated for Oregon and/or crash modification factors (CMFs) approved by ODOT for use in the All Roads Transportation Safety (ARTS) program
1A2	Estimated number of bicycle and pedestrian related crashes.	To what extent does the alternative reduce the estimated frequency of pedestrian and bicycle related crashes? Whenever possible, measure using reliable crash modification factors (CMFs) for estimating relative change in predicted crash frequency.

A faded, green-tinted photograph of a building with a sign that reads "THE DALLAS". The building is a long, low structure with a curved roofline. In the foreground, there is a stone wall and a wooden fence. The overall image has a textured, halftone-like appearance.

PLAN & POLICY REVIEW



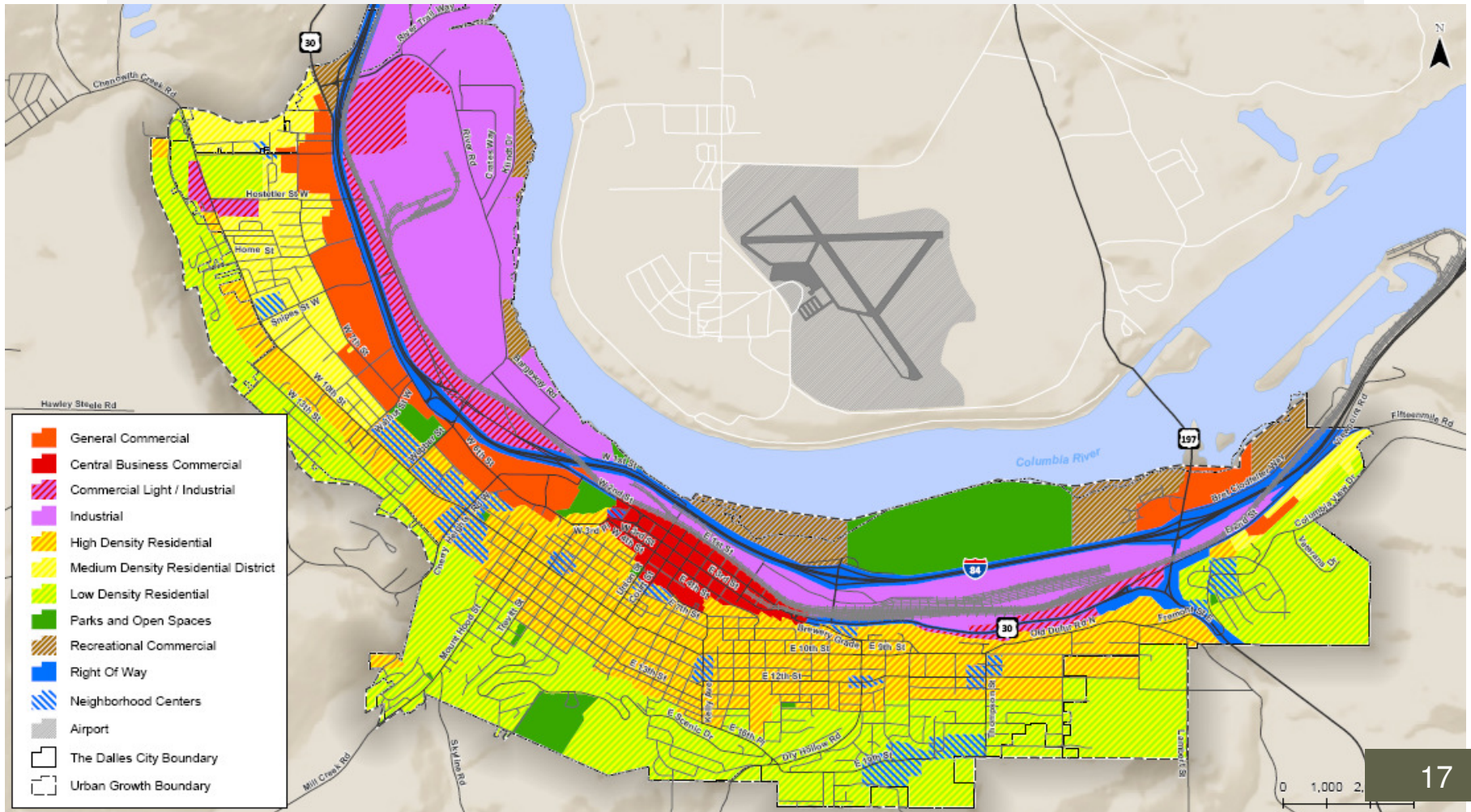
EXISTING CONDITIONS DISCUSSION

Existing Conditions

- Existing Pavement Conditions
- Population projection & Priority Lands for Development
- Functional Classification
- Roadway Operations
- Safety
- Pedestrian & Bicycle Systems
- Other Transportation Systems
- Funding Inventory

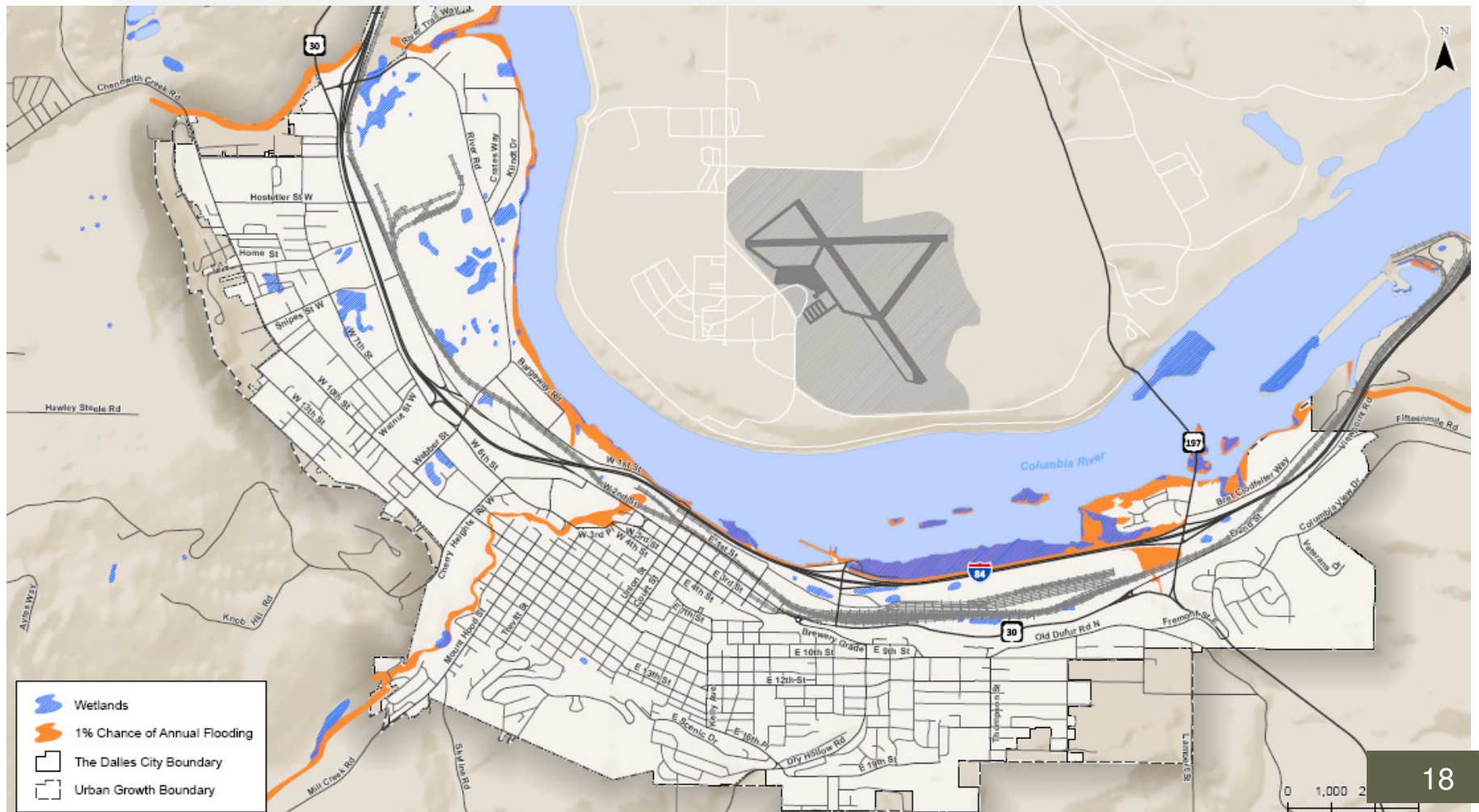
Existing Conditions

Population projection & Priority Lands for Development – Zoning



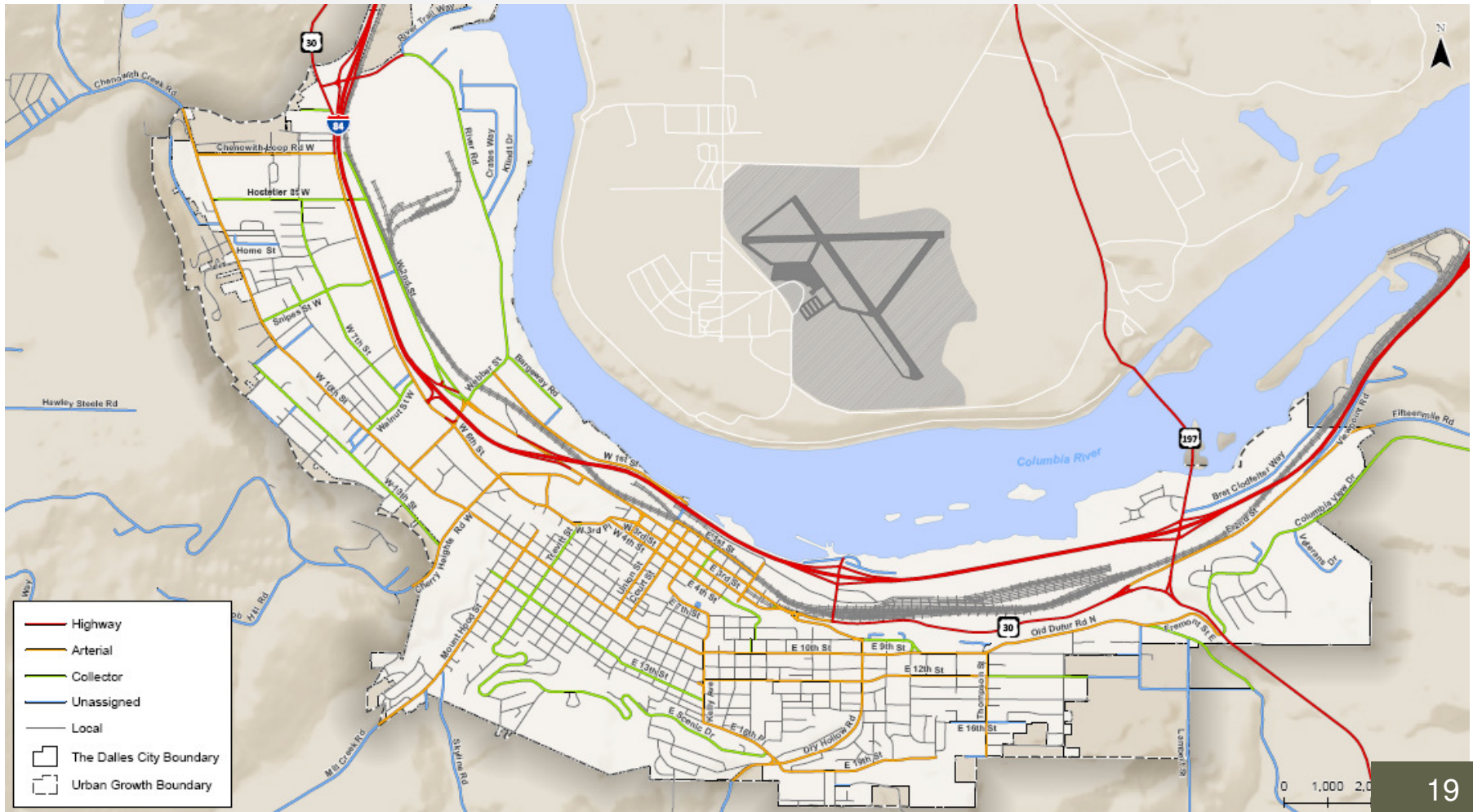
Existing Conditions

Population projection & Priority Lands for Development – Environment



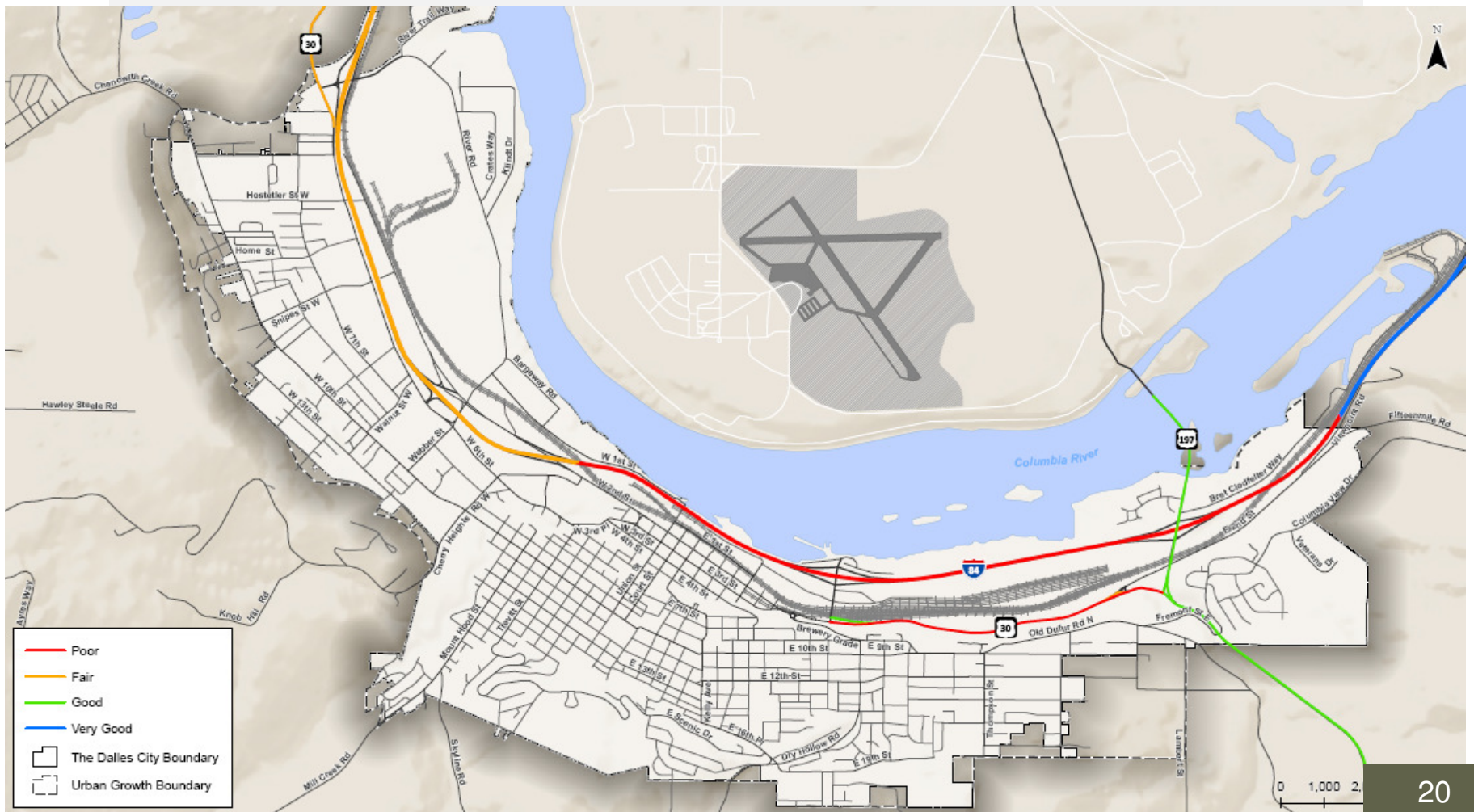
Existing Conditions

Functional Classification



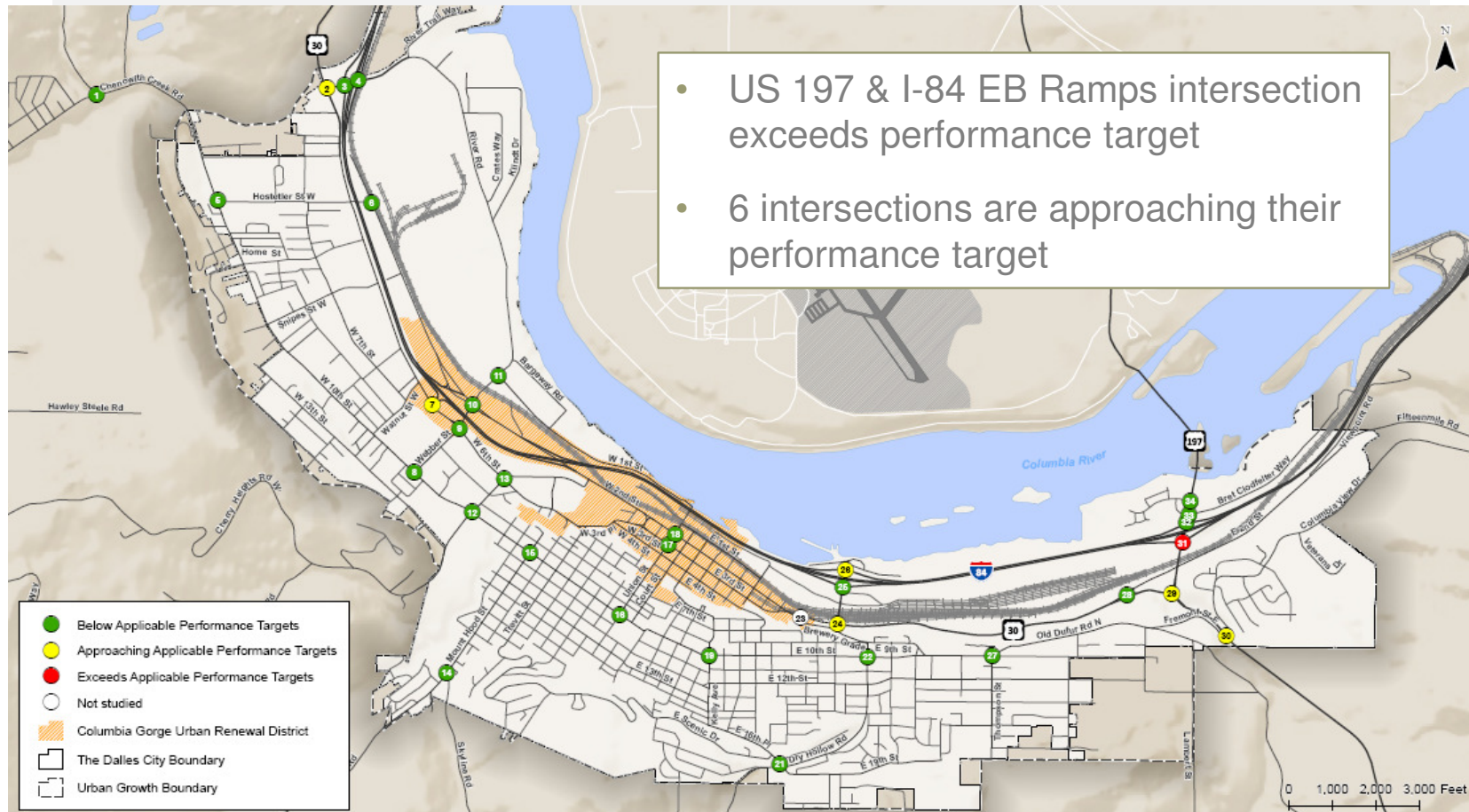
Existing Conditions

Functional Classification – Existing Pavement Conditions



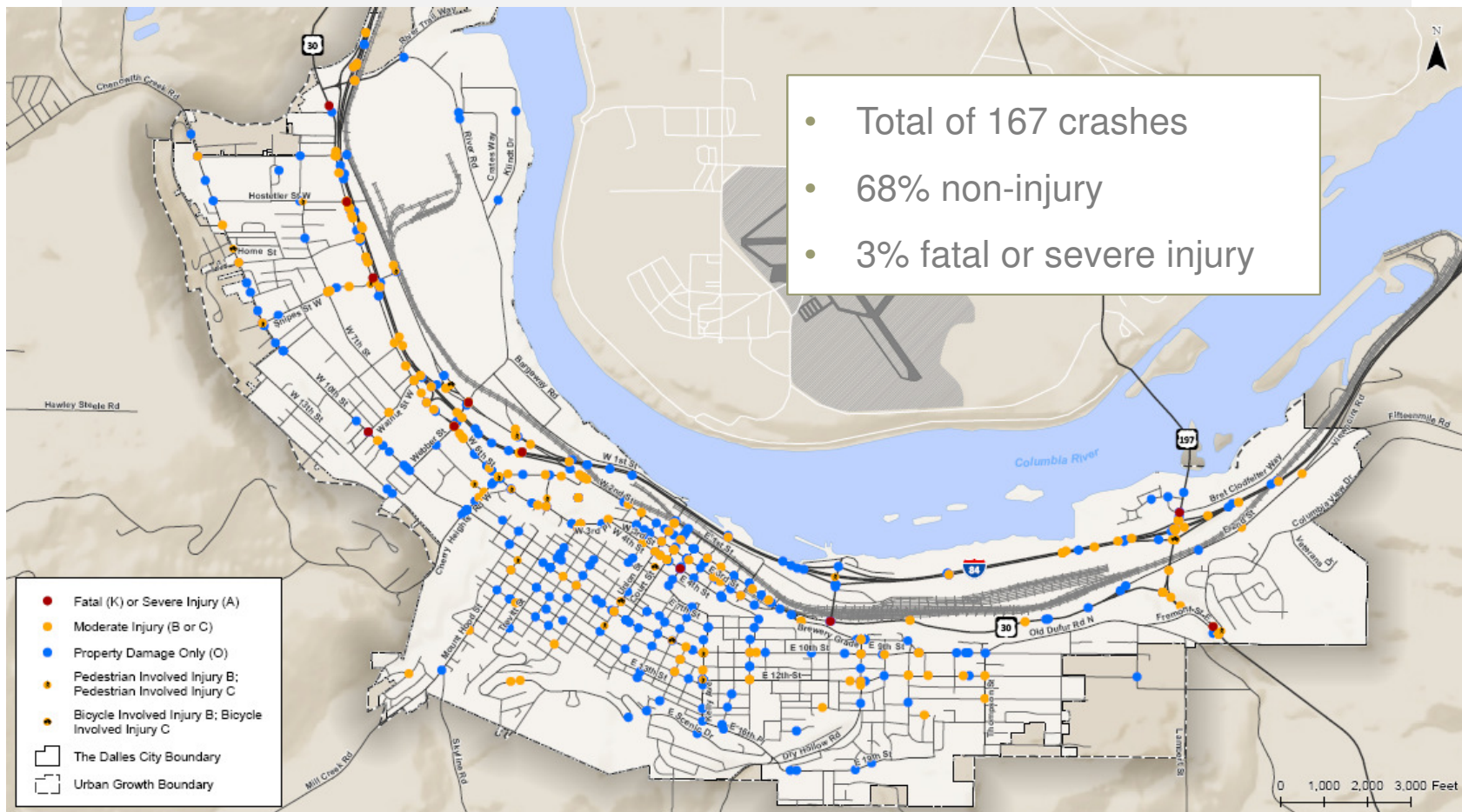
Existing Conditions

Existing Roadway Operations



Existing Conditions

Safety – Reported Crash History (2010/2014)



Existing Conditions

Safety – Critical Rate

- Intersection crash rate is over the critical rate:
 - US 97 & US 30 Safety Needs
 - US 197 & Fremont St & Columbia View Drive
- Intersection crash rate is higher than the 90th percentile crash rate:
 - I-84 EB Ramps & River Road
 - Kelly Avenue & E 10th Street
 - Dry Hollow Road/E 10th Street

** A red highlighted Intersection crash rate cell is flagging that the intersection crash rate is higher than the 90th percentile crash rate provided in Exhibit 4-1 of the APM*

Existing Conditions

Safety – US 97 & US 30 Safety Needs

- Total of 15 crashes (4 injury B or C and 11 non-injury)
- 11 crash reports involving a left-turn crash indicate that the driver did not yield right-of-way



Existing Conditions

Safety – US 197 & Fremont St & Columbia View Drive Safety Needs

- Total of 12 crashes (1 severe injury, 6 injury, and 5 non-injury)
- 3 fixed-object and 4 angle crashes resulted on **snow** or **ice** in October, November, and December



Existing Conditions

Safety – I-84 EB Ramps & River Road Safety Needs

- Total of 4 crashes (2 injury B or C, and 2 non-injury)
- 2 of the crashes were reported as turning movement, and crash reports indicate the driver didn't yield right-of-way.



Existing Conditions

Safety – Kelly Avenue & E 10th Street Safety Needs

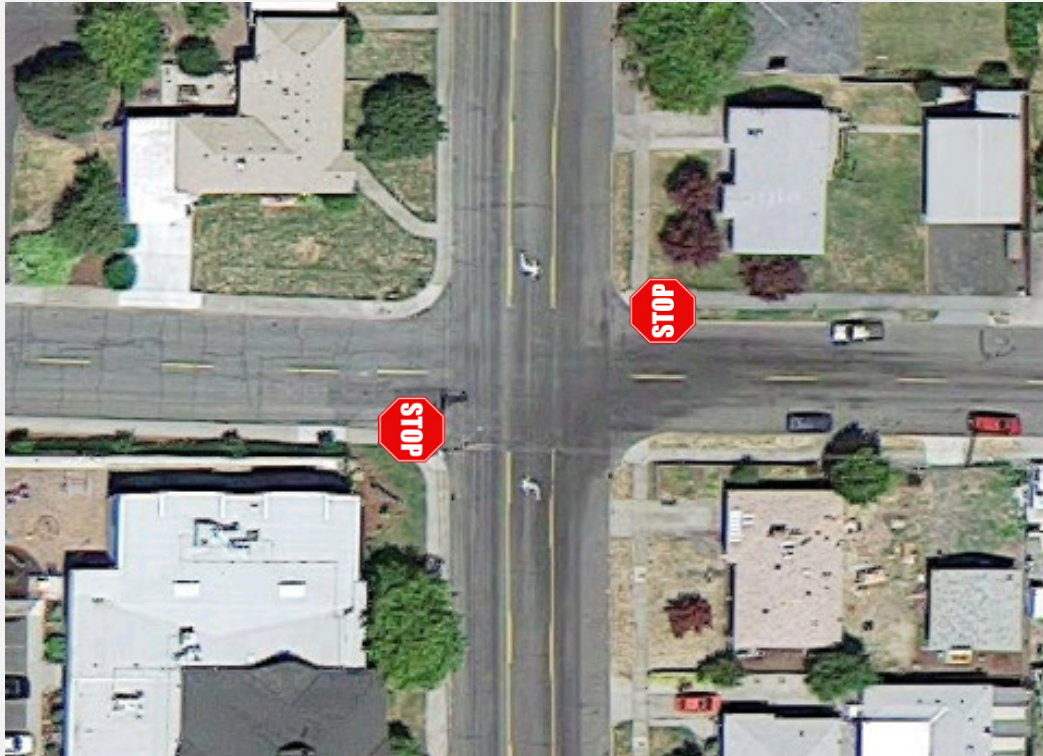
- A total of 6 crashes (4 injury and 2 non-injury).
- Four of the crashes were reported as angle and reported crash cause indicates **“The driver passed the stop sign”**.



Existing Conditions

Safety – Dry Hollow Road/E 10th Street Safety Needs

- Total of 6 crashes (2 injury and 4 non-injury)
- 4 of the crashes resulted in angle collisions, and crash reports indicate **the driver didn't yield right-of-way.**



Existing Conditions

Safety – Safety Issues

- The following locations have unique geometry and/or traffic control that may be contributing to crashes:
 - Skewed intersection geometry at E 10th Street/Thompson Street
 - Skewed intersection geometry and multiple points of conflict at E 2nd Street/US 30
 - E 16th Place and Dry Hollow Road



E 10th Street/Thompson Street



E 2nd Street/US 30

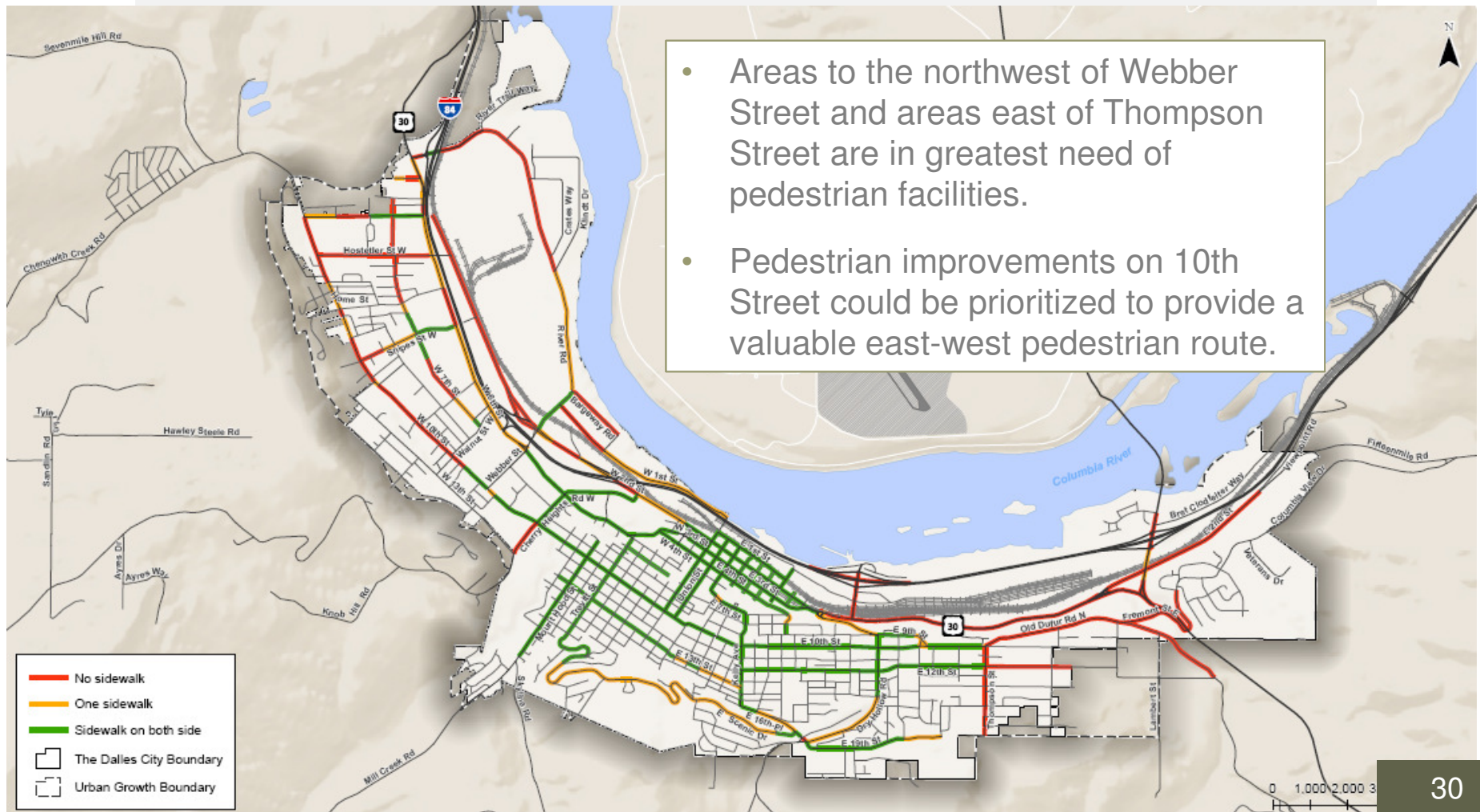


E 16th Place and Dry Hollow Road

⇒ Brainstorm and discuss other ideas with group during workshop to follow

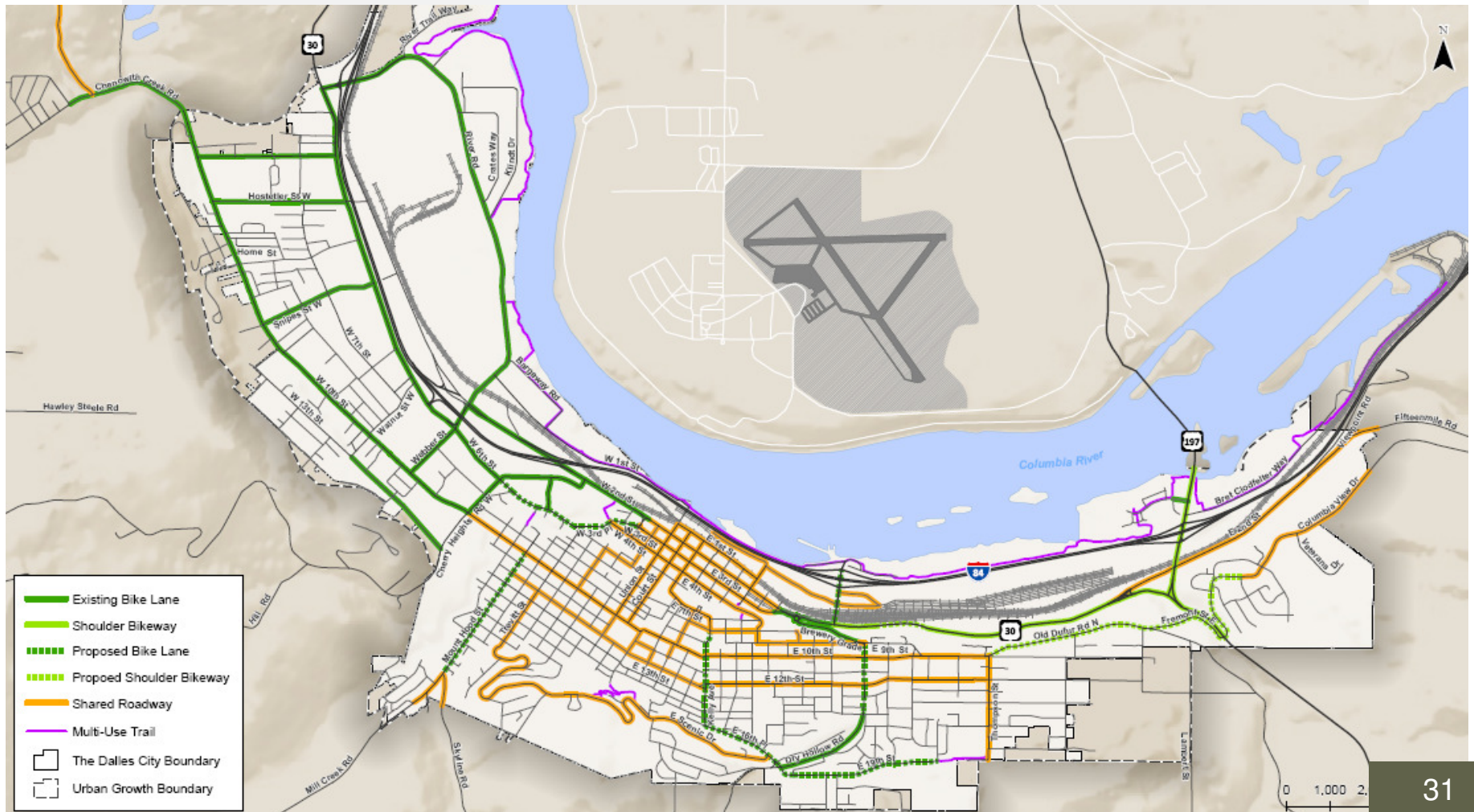
Existing Conditions

Pedestrian & Bicycle Systems – Existing Sidewalks and Shared-Used Paths



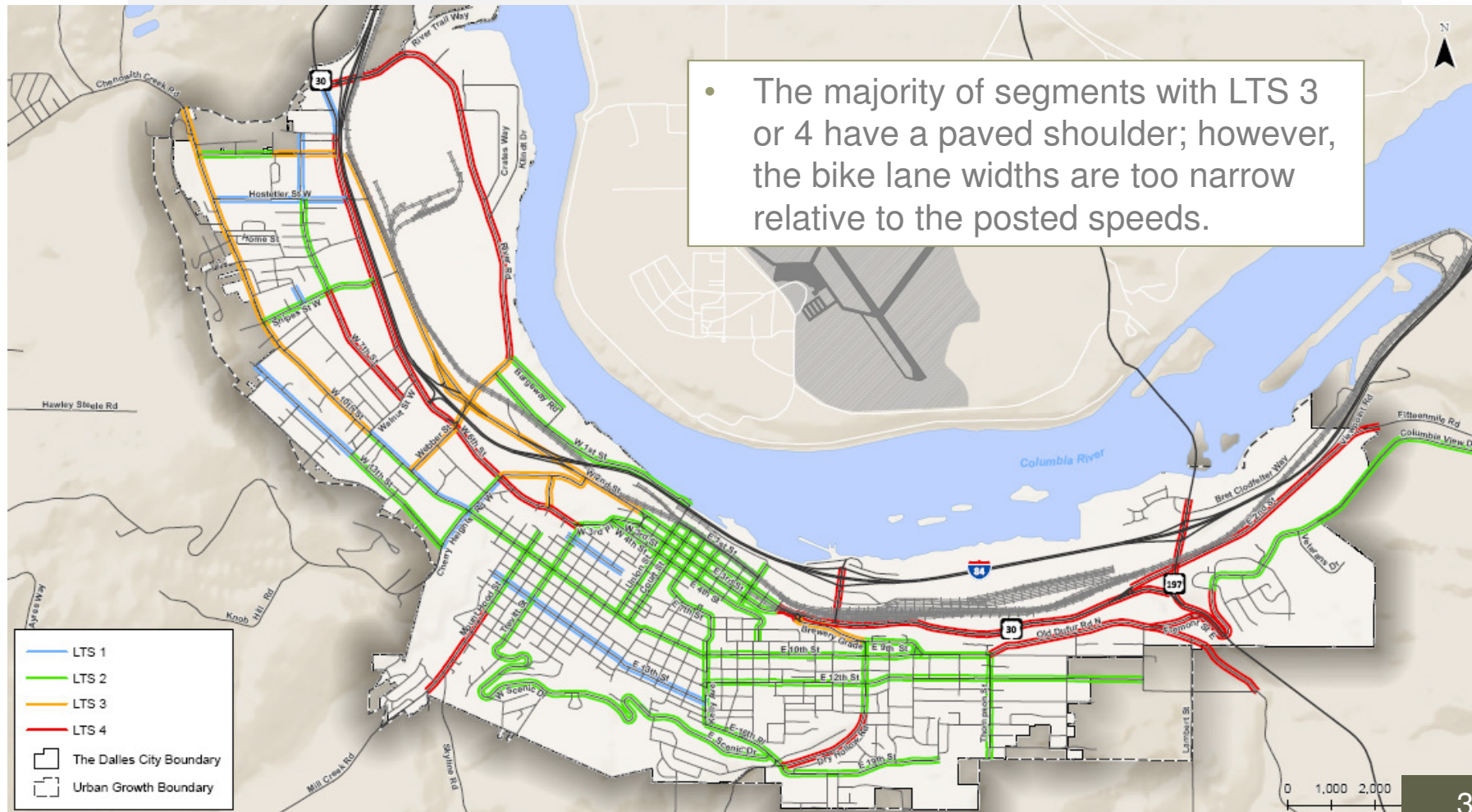
Existing Conditions

Pedestrian & Bicycle Systems – Existing Bike Facilities



Existing Conditions

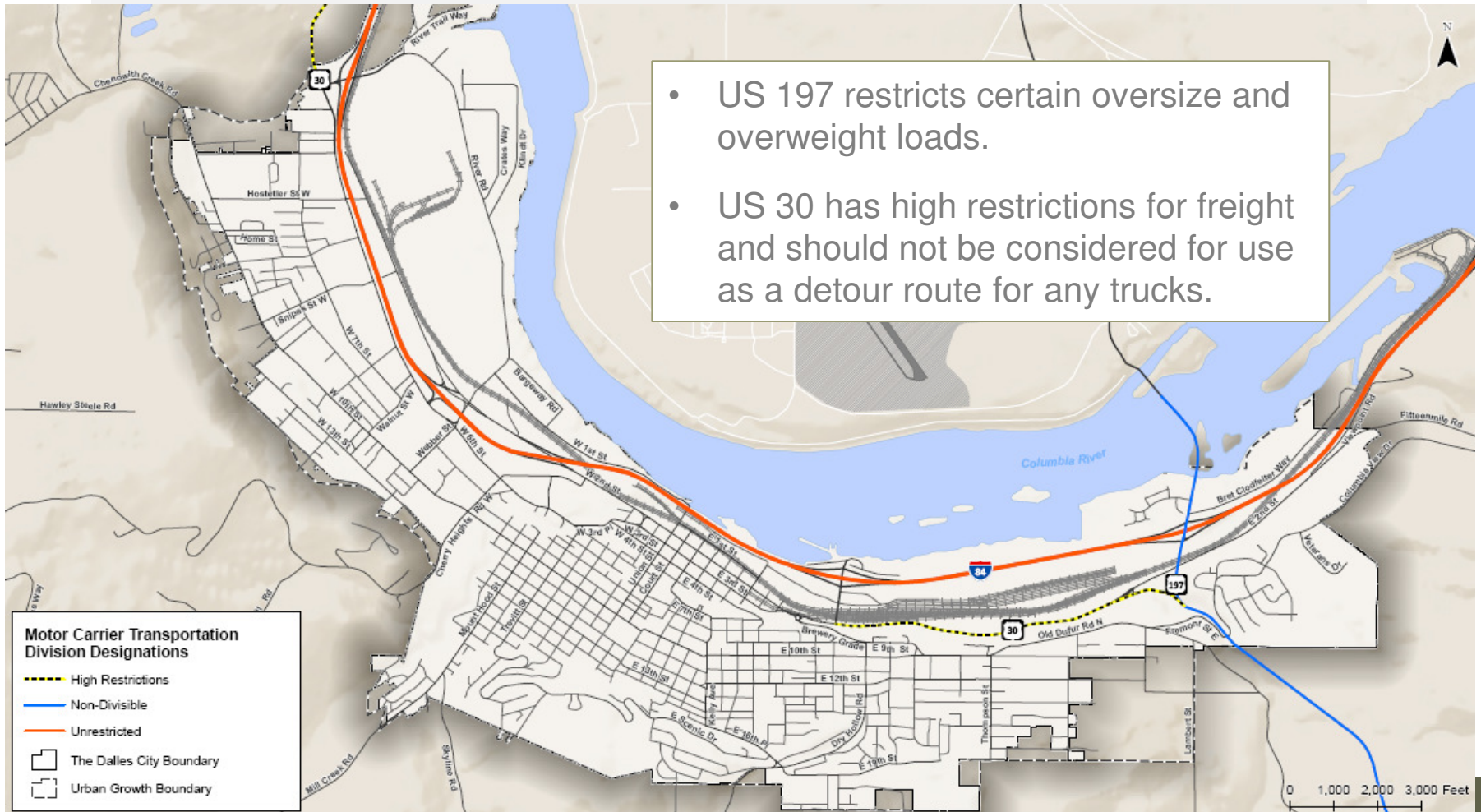
Pedestrian & Bicycle Systems – Bicycle Level of Traffic Stress



• The majority of segments with LTS 3 or 4 have a paved shoulder; however, the bike lane widths are too narrow relative to the posted speeds.

Existing Conditions

Other Transportation Systems – Freight Mobility



Existing Conditions

Other Transportation Systems – Transit

- A new transit center, operated by the Mid-Columbia Council of Governments, is currently under construction on West 7th Street, near the Chenoweth interchange.
- The transit center is expected to be complete in 2015, with park-and-ride space and bus service provided by Columbia Area Transit, MCCOG's Link, and possibly Greyhound.

Existing Conditions

Other Transportation Systems – Bridge Inventory

- West 6th Street Bridge over Mill Creek is open with weight restrictions.
- The US 30 Bridge over Chenoweth Creek and the US 197 Bridge over the Columbia River have sufficiency ratings below 50, indicating a functional or structural issue.



US 197 Bridge



West 6th Street Bridge

Existing Conditions

Other Transportation Systems – Airport



Existing Conditions

Other Transportation Systems – Funding Inventory



EXISTING TRANSPORTATION ISSUES WORKSHOP

Existing Transportation Issue Workshop

- Break out into small groups
- Goals:
 - ✓ Confirm or modify project goals and objectives
 - ✓ Confirm existing and future needs
 - ✓ Identify additional existing or future needs





REVIEW OF UPCOMING DATES

Review of Upcoming Dates

Next Steps

- Forecast Traffic Volumes for the year 2035
- Identify Future Needs/Deficiencies
- Identify and Evaluate Alternatives

Upcoming Deliverables for Review

- Tech Memo #4: Future Systems Conditions
- Tech Memo #5: Alternatives Analysis and Funding Program

Next TAC/PAC Meeting

- Week of January 25th